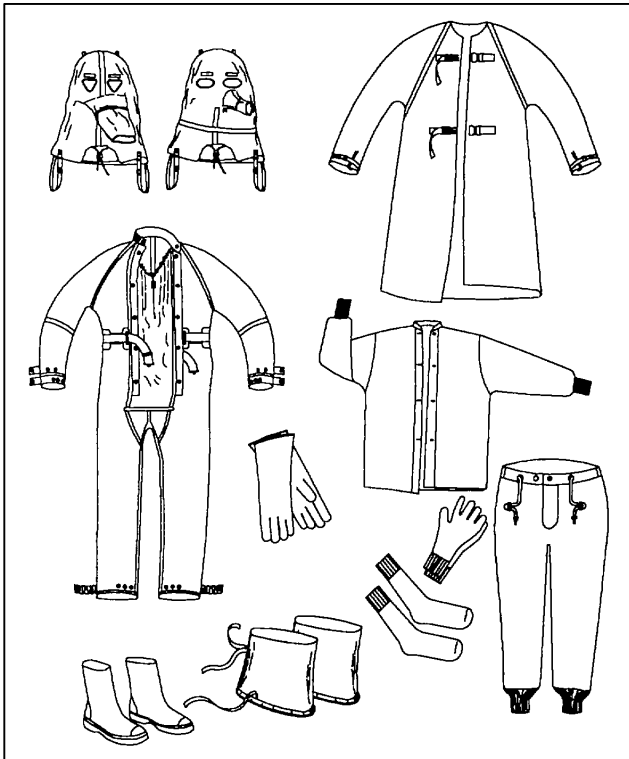


TECHNICAL MANUAL

OPERATOR'S, UNIT AND DIRECT SUPPORT
 MAINTENANCE MANUAL
 INCLUDING REPAIR PARTS AND SPECIAL TOOLS LIST
 FOR THE
 TOXICOLOGICAL AGENT PROTECTIVE (TAP) ENSEMBLE



| | |
|--------------------------------|-----|
| CHAPTER 1 INTRODUCTION..... | 1-1 |
|--------------------------------|-----|

| | |
|---|-----|
| CHAPTER 2 OPERATING INSTRUCTIONS | 2-1 |
|---|-----|

| | |
|---|-----|
| CHAPTER 3 OPERATOR MAINTENANCE | 3-1 |
|---|-----|

| | |
|-------------------------------------|-----|
| CHAPTER 4 UNIT MAINTENANCE | 4-1 |
|-------------------------------------|-----|

| | |
|--|-----|
| CHAPTER 5 DIRECT SUPPORT MAINTENANCE..... | 5-1 |
|--|-----|

| | |
|--------------------------------|-----|
| APPENDIX A REFERENCES | A-1 |
|--------------------------------|-----|

| | |
|---|-----|
| APPENDIX B MAINTENANCE ALLOCATION CHART (MAC) | B-1 |
|---|-----|

| | |
|---|-----|
| APPENDIX C REPAIR PARTS AND SPECIAL TOOLS LISTS | C-1 |
|---|-----|

| | |
|--|-----|
| APPENDIX D COMPONENT OF END ITEM LIST | D-1 |
|--|-----|

| | |
|---|-----|
| APPENDIX E ADDITIONAL AUTHORIZATION LIST... .. | E-1 |
|---|-----|

| | |
|--|-----|
| APPENDIX F EXPENDABLE DURABLE SUPPLIES AND MATERIALS LIST..... | F-1 |
|--|-----|

| | |
|--|-----|
| APPENDIX G ILLUSTRATED LIST OF MANUFACTURED ITEMS..... | G-1 |
|--|-----|

| | |
|---------------|------------|
| GLOSSARY..... | GLOSSARY-1 |
|---------------|------------|

| | |
|-------------------------|---------|
| ALPHABETICAL INDEX..... | Index 1 |
|-------------------------|---------|

TECHNICAL MANUAL
OPERATOR'S, UNIT, AND DIRECT SUPPORT
MAINTENANCE MANUAL
INCLUDING REPAIR PARTS AND SPECIAL TOOLS LIST
FOR
TOXICOLOGICAL AGENT PROTECTIVE (TAP) ENSEMBLE

REPORTING ERRORS AND RECOMMENDING IMPROVEMENTS

You can help improve this manual. If you find any mistakes or if you know of a way to improve the procedures, please let us know. Mail your letter, DA form 2028 (Recommended Changes to Publications and Blank Forms, or DA form 2028-2, located in the back of this manual) direct to: Commander, U.S. Army Aviation and Troop Command, ATTN: AMSAT-I-MP, 4300 Goodfellow Blvd. St. Louis, MO 63120-1798. A reply will be furnished to you.

DISTRIBUTION STATEMENT A: Approved for public release; distribution is unlimited

TABLE OF CONTENTS

| | page |
|--|------|
| CHAPTER 1. INTRODUCTION..... | 1-1 |
| Section I. GENERAL INFORMATION..... | 1-1 |
| 1-1. SCOPE..... | 1-1 |
| 1-2. MAINTENANCE FORMS AND PROCEDURES..... | 1-1 |
| 1-3. DESTRUCTION OF ARMY MATERIEL TO PREVENT ENEMY USE..... | 1-1 |
| 1-4. PREPARATION FOR STORAGE OR SHIPMENT..... | 1-1 |
| 1-5. QUALITY ASSURANCE (QA)..... | 1-1 |
| 1-6. NOMENCLATURE CROSS-REFERENCE LIST..... | 1-1 |
| 1-7. REPORTING EQUIPMENT IMPROVEMENT RECOMMENDATIONS (EIR)..... | 1-2 |
| 1-8. CORROSION PREVENTION AND CONTROL..... | 1-2 |
| 1-9. LIST OF ABBREVIATIONS..... | 1-2 |
| Section II. EQUIPMENT DESCRIPTION..... | 1-2 |
| 1-10. EQUIPMENT CHARACTERISTICS, CAPABILITIES, AND FEATURES..... | 1-2 |
| 1-11. LOCATION AND DESCRIPTIONS OF MAJOR COMPONENTS..... | 1-3 |
| 1-12. DIFFERENCES BETWEEN MODELS..... | 1-5 |
| 1-13. EQUIPMENT CONFIGURATION..... | 1-5 |
| Section III. PRINCIPLES OF OPERATION..... | 1-5 |
| 1-14. CHEMICAL AND BIOLOGICAL PROTECTION..... | 1-5 |

TABLE OF CONTENTS

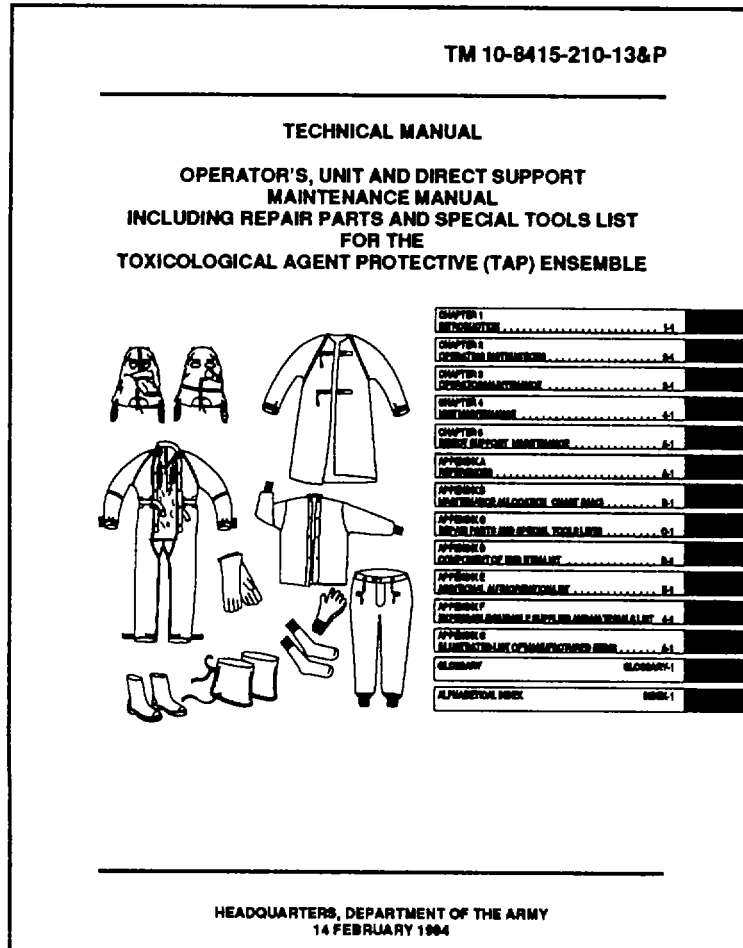
| | page |
|---|------|
| CHAPTER 2. OPERATING INSTRUCTIONS..... | 2-1 |
| Section I. PREVENTIVE MAINTENANCE CHECKS AND SERVICES (PMCS)..... | 2-1 |
| 2-1. INTRODUCTION TO PMCS TABLE..... | 2-1 |
| Section II. OPERATION UNDER USUAL CONDITIONS..... | 2-16 |
| 2-2. ASSEMBLY AND PREPARATION FOR USE..... | 2-16 |
| 2-3. LEVELS OF PROTECTION AND APPLICABILITY OF TAP ENSEMBLE COMPONENTS..... | 2-16 |
| 2-4. DORNING TAP ENSEMBLE FOR LEVEL A..... | 2-17 |
| 2-5. DORNING TAP ENSEMBLE FOR LEVEL B..... | 2-21 |
| 2-6. DORNING TAP ENSEMBLE FOR LEVEL C AND D..... | 2-23 |
| 2-7. DOFFING COMPLETE TAP ENSEMBLE..... | 2-24 |
| 2-8. DOFFING TAP ENSEMBLE FOR LEVEL B..... | 2-27 |
| 2-9. DOFFING TAP ENSEMBLE FOR LEVEL C AND D..... | 2-29 |
| 2-10. DECALS AND INSTRUCTION PLATES..... | 2-29 |
| Section III. OPERATION UNDER UNUSUAL CONDITIONS..... | 2-30 |
| 2-11. WEAR TIME LIMITATIONS..... | 2-30 |
| 2-12. DOFFING THE TAP ENSEMBLE IN A CHEMICAL ENVIRONMENT..... | 2-30 |
| 2-13. EMERGENCY DOFFING OF THE TAP ENSEMBLE..... | 2-30 |
| CHAPTER 3. OPERATOR MAINTENANCE INSTRUCTIONS..... | 3-1 |
| Section I. OPERATOR MAINTENANCE PROCEDURES..... | 3-1 |
| 3-1. INSPECTION..... | 3-1 |
| 3-2. CLEANING..... | 3-1 |
| CHAPTER 4. UNIT MAINTENANCE INSTRUCTIONS..... | 4-1 |
| Section I. REPAIR PARTS, SPECIAL TOOLS, TEST, MEASUREMENT, AND DIAGNOSTIC EQUIPMENT (TMDE), AND SUPPORT EQUIPMENT..... | 4-1 |
| 4-1. GENERAL..... | 4-1 |
| Section II. SERVICE UPON RECEIPT..... | 4-1 |
| 4-2. SERVICE UPON RECEIPT OF MATERIEL..... | 4-1 |
| Section III. PREPARATION FOR STORAGE OR SHIPMENT..... | 4-2 |
| 4-3. PREPARATION FOR STORAGE..... | 4-2 |
| 4-4. PRESERVATION..... | 4-2 |
| 4-5. PREPARATION FOR SHIPMENT..... | 4-2 |
| CHAPTER 5. DIRECT SUPPORT MAINTENANCE INSTRUCTIONS..... | 5-1 |
| Section I. REPAIR PARTS, SPECIAL TOOLS; TEST MEASUREMENT AND DIAGNOSTIC EQUIPMENT (TMDE) AND SUPPORT EQUIPMENT..... | 5-1 |
| 5-1. COMMON TOOLS AND EQUIPMENT..... | 5-1 |
| 5-2. SPECIAL TOOLS, TMDE, AND SUPPORT EQUIPMENT..... | 5-1 |
| 5-3. REPAIR PARTS..... | 5-2 |
| Section II. DIRECT SUPPORT PREVENTIVE MAINTENANCE CHECKS AND SERVICES (PMCS)..... | 5-2 |
| 5-4. GENERAL..... | 5-2 |

TABLE OF CONTENTS

| | page |
|--|-------------------|
| Section III. MAINTENANCE PROCEDURES | 5-2 |
| 5-5. GENERAL | 5-2 |
| 5-6. DECONTAMINATE | 5-2 |
| 5-7. LAUNDERING THE M3 TAP/M40 TAP SPECIAL PURPOSE HOODS, M2A1 TAP BOOTS, M3 TAP COVERALLS, M1 TAP FOOTWEAR COVERS, M3/M4 TAP GLOVES, M2 TAP APRON | 5-2 |
| 5-8. STITCHES, SEAMS AND STITCHING | 5-2 |
| 5-9. PATCH REPAIRS IN BUTYL MATERIAL | 5-4 |
| 5-10. REPAIR STRAPPING AND TUNNELS | 5-7 |
| 5-11. REPLACE SNAP FASTENERS | 5-10 |
| 5-12. M3 TAP AND M40 TAP SPECIAL PURPOSE HOODS | 5-13 |
| 5-13. M2A1 TAP BOOTS | 5-16 |
| 5-14. M3 TAP COVERALLS | 5-18 |
| 5-15. M1 TAP FOOTWEAR COVERS | 5-27 |
| 5-16. M3/M4 TAP GLOVES | 5-28 |
| 5-17. M2 TAP APRON | 5-30 |
| 5-18. LAUNDERING THE CHEMICAL PROTECTIVE CLOTHING OUTFIT | 5-33 |
| | |
| APPENDIX A. REFERENCES | A-1 |
| APPENDIX B. MAINTENANCE ALLOCATION CHART | B-1 |
| APPENDIX C. REPAIR PARTS AND SPECIAL TOOLS LIST (RPSTL) | C-1 |
| APPENDIX D. COMPONENTS OF END ITEM AND BASIC ISSUE ITEMS LIST | D-1 |
| APPENDIX E. ADDITIONAL AUTHORIZATION LIST | E-1 |
| APPENDIX F. EXPENDABLE/DURABLE SUPPLIES AND MATERIALS LIST | F-1 |
| APPENDIX G. ILLUSTRATED LIST OF MANUFACTURED ITEMS | G-1 |
| GLOSSARY | GLOSSARY-1 |
| ALPHABETICAL INDEX | Index 1 |

HOW TO USE THIS MANUAL

This manual, (TM 10-8415-210-13&P), contains general information, operating instructions, PMCS instructions, troubleshooting steps, and maintenance instructions for the Toxicological Agents Protective (TAP) Ensemble. Use the front cover index and thumb bleeds at the edge of the pages to quickly find the sections of the manual shown on the cover.



The manual has been divided into chapters, sections and paragraphs that are numbered in sequence. Pages, paragraphs, and illustrations are numbered by chapter. For example, chapter 2, page 3 is marked 2-3; chapter 3, paragraph 5 is marked 3-5; figure 2-3 is the third illustration in chapter 2. To quickly find specific information, use the table of contents. For example, the front cover index states that chapter 1 begins on page 1-1. The table of contents on page i tells you the exact page where the paragraph you want is located.

CHAPTER 1

INTRODUCTION

| Subject | Page |
|--|------|
| Section I GENERAL INFORMATION | 1-1 |
| 1-1 SCOPE..... | 1-1 |
| 1-2 MAINTENANCE FORMS AND PROCEDURES..... | 1-1 |
| 1-3 DESTRUCTION OF ARMY MATERIEL TO PREVENT ENEMY USE | 1-1 |
| 1-4 PREPARATION FOR STORAGE OR SHIPMENT | 1-1 |
| 1-5 QUALITY ASSURANCE (QA)..... | 1-1 |
| 1-6 NOMENCLATURE CROSS-REFERENCE LIST | 1-1 |
| 1-7 REPORTING EQUIPMENT IMPROVEMENT RECOMMENDATIONS (EIR)... | 1-2 |
| 1-8 CORROSION PREVENTION AND CONTROL | 1-2 |
| 1-9 LIST OF ABBREVIATIONS | 1-2 |
| Section II EQUIPMENT DESCRIPTION..... | 1-2 |
| 1-10 EQUIPMENT CHARACTERISTICS, CAPABILITIES, AND FEATURES | 1-2 |
| 1-11 LOCATION AND DESCRIPTIONS OF MAJOR COMPONENTS | 1-3 |
| 1-12 DIFFERENCES BETWEEN MODELS..... | 1-5 |
| 1-13 EQUIPMENT CONFIGURATION..... | 1-5 |
| Section III PRINCIPLES OF OPERATION | 1-5 |
| 1-14 CHEMICAL AND BIOLOGICAL PROTECTION | 1-5 |

Section I. GENERAL INFORMATION

1-1. SCOPE. This manual describes Operator, Unit and Direct Support maintenance procedures for the Toxicological Agents Protective (TAP) Ensemble.

1-2. MAINTENANCE FORMS AND PROCEDURES. Department of the Army forms and procedures used for TAP maintenance shall be those prescribed by DA PAM 738-750 as contained in the Maintenance Management Update.

1-3. DESTRUCTION OF ARMY MATERIEL TO PREVENT ENEMY USE. Destruction of Army materiel to prevent enemy use shall be in accordance with TM 750-244-3.

1-4. PREPARATION FOR STORAGE OR SHIPMENT. Refer to paragraphs 4-3 and 4-5 for procedures to prepare TAP for storage or shipment.

1-5. QUALITY ASSURANCE (QA). TAP Ensemble components will be inspected in accordance with MIL-STD-105 at government acceptance to assure that Quality Assurance Standards are met.

1-6. NOMENCLATURE CROSS-REFERENCE LIST.

| | |
|---|---------------------|
| <u>Official Nomenclature:</u> | <u>Common Name:</u> |
| Clothing Outfit, Chemical Protect (Impregnated Set) | Clothing Outfit |

1-7. REPORTING EQUIPMENT IMPROVEMENT RECOMMENDATIONS (EIR). If your TAP needs improvement, let us know. Send us an EIR. You, the user, are the only one who can tell us what you don't like about your equipment. Let us know why you don't like the design or performance. Put it on an SF 368 (Product Quality Deficiency Report). Mail it to us at: Commander, U.S. Army Aviation and Troop Command, ATTN: AMSAT-I-MDO, 4300 Goodfellow Blvd., St. Louis, MO 63120-1798. We will send you a reply.

1-8. CORROSION PREVENTION AND CONTROL.

a. Corrosion Prevention and Control (CPC) of Army materiel is a continuing concern. It is important that any corrosion problems with TAP be reported so that the problem can be corrected and improvements can be made to prevent the problem in future items.

b. While corrosion is typically associated with rusting of metals, it can also include deterioration of other materials, such as rubber and plastic. Unusual cracking, softening, swelling or breaking of these materials may be a corrosion problem.

c. If a corrosion problem is identified, it can be reported using SF 368, Quality Deficiency Report. Use of key words such as "corrosion", "rust", "deterioration", or "cracking" will assure that the information is identified as a CPC problem.

d. This form should be submitted to the address specified in DA Pam 738-750.

1-9. LIST OF ABBREVIATIONS.

| | |
|------|---|
| CPC | Corrosion Prevention and Control |
| CTA | Common Table of Allowances |
| EIR | Equipment Improvement Recommendation |
| EOD | Explosive Ordnance Disposal |
| ESC | Equipment Serviceability Criteria |
| GB | Nonpersistent nerve agent |
| H | Blister agent |
| MWO | Modification Work Order |
| MTOE | Modified Table of Organizational Equipment |
| NBC | Nuclear, Biological, Chemical |
| STB | Supertropical Bleach |
| TMDE | Test, Measurement, and Diagnostic Equipment |
| TOE | Table of Organizational Equipment |
| U/M | Unit of Measure |
| UOC | Usable On Code |
| VX | Persistent nerve agent |

Section II. EQUIPMENT DESCRIPTION

1-10. EQUIPMENT CHARACTERISTICS, CAPABILITIES, AND FEATURES.

a. Characteristics.

- Designed from impermeable rubber coated cloth material.
- Component maybe decontaminated for re-use.

b. Capabilities.

- Provide Chemical and Biological vapor and liquid agent protection.

1-10. EQUIPMENT CHARACTERISTICS, CAPABILITIES, AND FEATURES. (CONT)

c. Features.

- Can be utilized in a variety of configurations.
- Provide protection for different levels of contamination

1-11. **LOCATION AND DESCRIPTIONS OF MAJOR COMPONENTS.** The TAP Ensemble is not issued as a set; all components must be requisitioned separately. The TAP Ensemble consists of the following components, depicted in Figure 1-1:

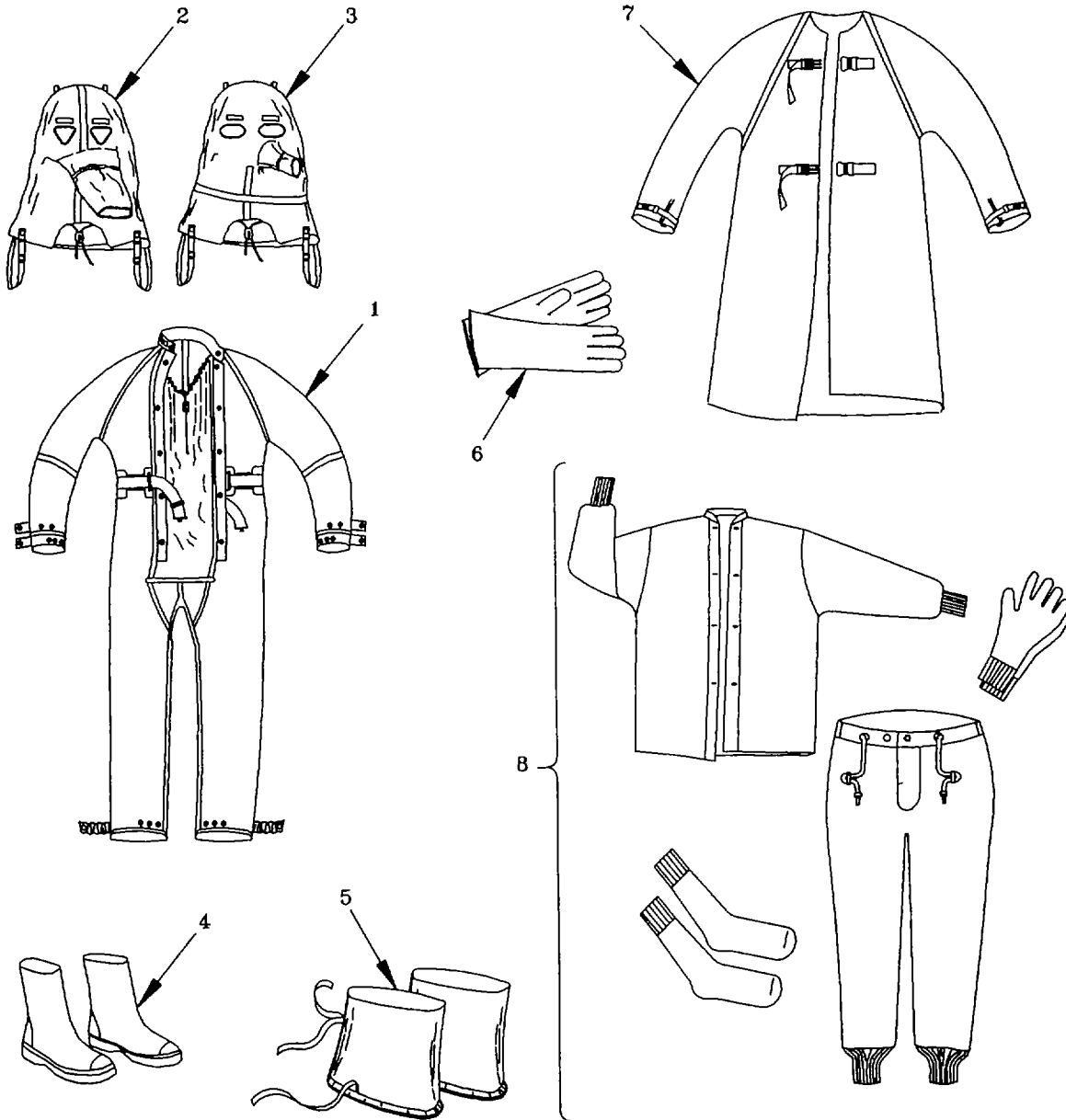


Figure 1-1. Major Components.
1-3