

TECHNICAL MANUAL

**ORGANIZATIONAL MAINTENANCE
REPAIR PARTS AND SPECIAL TOOLS LISTS**

**TRACTOR, FULL TRACKED, LOW SPEED
DIESEL ENGINE DRIVEN: MEDIUM
DBP, OSCILLATING TRACK, 78 INCH
GAGE, ARMY MODEL D7E
(NSN 2410-00-782-1130) W/WINCH
(NSN 2410-00-926-3697) W/RIPPER
(NSN 2410-01-050-9628) W/WINCH AND ROPS
(NSN 2410-01-050-9629) W/RIPPER AND ROPS
CATERPILLAR MODEL D7E**

**This copy is a reprint which includes current
pages from Change: 1.**

HEADQUARTERS, DEPARTMENT OF THE ARMY

06 FEBRUARY 1985

TECHNICAL MANUAL
TM 5-2410-214-20P

HEADQUARTERS
DEPARTMENT OF THE ARMY
WASHINGTON, DC, 6 February 1985

ORGANIZATIONAL MAINTENANCE REPAIR PARTS
AND SPECIAL TOOLS LISTS

TRACTOR, FULL TRACKED, LOW SPEED
DIESEL ENGINE DRIVEN: MEDIUM
DRAWBAR PULL, OSCILLATING
TRACK, 78 INCH GAGE, ARMY MODEL D7E
(NSN 2410-00-782-1130) W/WINCH
(NSN 2410-00-926-3697) W/RIPPER
(NSN 2410-01-050-9628) W/WINCH AND ROPS
(NSN 2410-01-050-9629) W/RIPPER AND ROPS
CATERPILLAR MODEL D7E

Current as of 19 September 1984

REPORTING ERRORS AND RECOMMENDING IMPROVEMENTS

You can help improve this manual. If you find any mistakes or if you know of a way to improve the procedures, please let us know. Mail your letter, DA Form 2028 (Recommended Changes to Publications and Blank Forms), or DA Form 2028-2 located in back of this manual direct to: U.S. Army Tank-Automotive Command, ATTN: AMSTA-MB, Warren, MI 48090. A reply will be furnished to you.

TABLE OF CONTENTS

	Page	Illus Fig
SECTION I. INTRODUCTION	1	
SECTION II. REPAIR PARTS LIST	7	
GROUP 01 ENGINE		
0106-ENGINE LUBRICATION SYSTEM	7	
ENGINE OIL BREATHER AND FILLER CAP.	7	1
OIL FILTER LINES AND FITTINGS	9	2
OIL FILTER LINES	13	3

*This publication supersedes TM 5-2410-214-20P dated 29 December 1975 and all changes.

TABLE OF CONTENTS

	Page	Illus Fig
OIL COOLER	17	4
OIL FILTER	19	5
OIL FILTER EXPLODED VIEW	21	6
0108-MANIFOLDS	25	
MANIFOLDS	25	7
 GROUP 03		
FUEL SYSTEM		
0302-FUEL PUMPS	27	
FUEL TRANSFER PUMP.	27	8
FUEL INJECTION LINES	29	9
0304-AIR CLEANER	33	
ENGINE AIR CLEANER AND INDICATOR	33	10
0306-TANKS, LINES, FITTINGS, HEADERS	37	
FUEL TANK AND FITTINGS	37	11
FUEL TANK LINES AND FITTINGS	41	12
0309-FUEL FILTERS	43	
FINAL FUEL FILTER	43	13
FUEL FILTER	45	14
0311-ENGINE STARTING AIDS	47	
FUEL PRIMER PUMP.	47	15
Glow plug AND WIRING HARNESS	51	16
0312-THROTTLE OR CHOKE CONTROLS	53	
THROTTLE LINKAGE	53	17
THROTTLE LINKAGE AND RELATED PARTS	57	18
 GROUP 04		
EXHAUST SYSTEM		
0401-MUFFLER AND PIPES	61	
EXHAUST EXTENSION AND RAIN CAP	61	19
 GROUP 05		
COOLING SYSTEM		
0501-RADIATOR, EVAPORATIVE COOLER, OR HEAT EXCHANGER	63	
RADIATOR AND RELATED PARTS	63	20
0502-COWLING, DEFLECTORS, AIR DUCTS, SHROUDS	65	
FAN GUARD, SHROUD AND RELATED PARTS	65	21
0503-WATER MANIFOLD, HEADERS, THERMOSTATS AND.		
HOUSING GASKET	67	
WATER MANIFOLD AND THERMOSTAT HOUSING, LINES AND FITTINGS	67	22
 GROUP 06		
ELECTRICAL SYSTEM		
0603-STARTING MOTOR	71	
HARNESS, LEAD AND STRAP ASSEMBLY	71	23
STARTER, DRIVE	73	24
0607-INSTRUMENT OR ENGINE CONTROL PANEL	75	
SWITCHES, GAGES, LINES AND FITTINGS	75	25
GAGES, LINES AND FITTINGS	79	26
CIRCUIT BREAKER SWITCHES, GAGES AND WIRING HARNESSES	8 1	27
0609-LIGHTS	8 5	
HEADLIGHT ASSEMBLY AND RELATED PARTS.	8 5	28

TABLE OF CONTENTS

	Page	Illus Fig
FLOODLIGHTS AND RELATED PARTS	87	29
0610-SENDING UNITS AND WARNING SWITCHES	91	
RELAY SOLENOID SWITCH AND RELATED PARTS	91	30
0612-BATTERIES, STORAGE	95	
BATTERIES, BOX AND CABLES	95	31
0613-HULL OR CHASSIS WIRING HARNESS	99	
RECEPTACLE ASSEMBLY	99	32
 GROUP 07		
TRANSMISSION		
0705-TRANSMISSION SHIFTING COMPONENTS	101	
GUIDE, GUARD ASSEMBLY AND RELATED PARTS	101	33
LEVER ASSEMBLY AND RELATED PARTS	103	34
0721-COOLERS, PUMPS, MOTORS	105	
TRANSMISSION PUMP	105	35
TRANSMISSION OIL COOLER	107	36
TRANSMISSION SCREEN GROUP, LINES AND FITTINGS	109	37
TRANSMISSION LINES AND FITTINGS	111	38
TRANSMISSION HOSES AND FITTINGS	115	39
TRANSMISSION FILTER	119	40
 GROUP 13		
WHEELS AND TRACKS		
1304-TRACK DRIVE SPROCKETS	121	
TRACK DRIVE SPROCKET.	121	41
 GROUP 18		
BODY, CAB, HOOD AND HULL		
1801-BODY, CAB, HOOD AND HULL ASSEMBLIES	123	
CRANKCASE GUARDS AND PULLHOOK	123	42
HOOD DASH AND GUARDS AND RELATED COMPONENTS	127	43
HOOD GUARD	131	44
HOOD GUARD RIGHTHAND	133	45
RADIATOR GUARD	135	46
RADIATOR HINGE GROUP	137	47
1802-FENDERS, RUNNING BOARDS WITH MOUNTING AND ATTACHING PARTS	139	
TRACK ROLLER GUARDS	139	48
TRACK FRAME GUARDS	141	49
FENDERS.	143	50
FENDER SUPPORT ASSEMBLY	145	51
1805-FLOORS, SUBFLOORS, AND RELATED COMPONENTS	147	
FLOOR PLATE ASSEMBLY	147	52
FLOOR BEAM AND ANGLE ASSEMBLIES	149	53
1806-UPHOLSTERY SEATS AND CARPETS	153	
SEAT ASSEMBLY	153	54
SEAT AND MOUNTING HARDWARE	157	55
1808-STOWAGE RACKS, BOXES, STRAPS CARRYING CASES	159	
TOOLBOX	159	56
 GROUP 20		
HOIST, WINCH, CAPSTAN, WINDGLASS, POWER CONTROL UNIT, AND POWER TAKEOFF		
2001-HOIST, CAPSTAN, WINDGLASS, CRANE OR WINCH ASSEMBLY	161	

TABLE OF CONTENTS

	Page	Illus Fig
WINCH DRUM, SHAFT AND RELATED COMPONENTS	161	57
WINCH BRAKE BAND AND RELATED PARTS	163	58
GROUP 22 BODY CHASSIS AND ACCESSORY ITEMS		
2210-DATA PLATES AND INSTRUCTION HOLDERS	165	
DATA PLATES	165	59
GROUP 24 HYDRAULIC AND FLUID SYSTEMS		
2401-PUMP AND MOTOR	167	
ROTARY PUMP	167	60
2402-MANIFOLD AND/OR CONTROL VALVES	169	
SCRAPER, HYDRAULIC MANIFOLD AND FITTINGS	169	61
2403-HYDRAULIC CONTROLS AND/OR MANUAL CONTROLS	173	
HYDRAULIC CONTROLS	173	62
2406-STRAINERS, FILTERS, LINES AND FITTINGS	175	
BLADE HYDRAULIC LINES AND FITTINGS	175	63
PUMP, LINES AND FITTINGS	179	64
RIPPER LINES AND FITTINGS	183	65
TILT CYLINDER HYDRAULIC LINES AND FITTINGS	187	66
2407-HYDRAULIC CYLINDERS	191	
RIPPER HYDRAULIC CYLINDER	191	67
2408-LIQUID TANKS OR RESERVOIRS	193	
HYDRAULIC TANK, MOUNTING BRACKET	193	68
GROUP 33 SPECIAL PURPOSE KITS		
3307-SPECIAL PURPOSE KITS	195	
SEAT BELT ASSEMBLY	195	69
GROUP 47 GAGES (NONELECTRICAL), WEIGHING AND MEASURING DEVICES		
4703-HOUR METER	197	
HOUR METER, HOUSING ASSEMBLY AND RELATED PARTS	197	70
HOUR METER, COVER ASSEMBLY AND RELATED PARTS	199	71
GROUP 74 CRANES, SHOVELS, AND EARTHMOVING EQUIPMENT COMPONENTS		
7436-LIFT ARMS AND PIVOT ASSEMBLIES	201	
HYDRAULIC CYLINDER BRACKET	201	72
7465-ROOTERS, RIPPERS, PLOWS, HARROWS AND ROTARY TILLERS	203	
RIPPER	203	73
GROUP 95 GENERAL USE STANDARDIZED PARTS		
9501-BULK MATERIEL	205	
BULK MATERIEL	205	BULK
SECTION III. SPECIAL TOOLS LIST (NOT APPLICABLE)		
SECTION IV. NATIONAL STOCK NUMBER AND PART NUMBER INDEX	207	

ORGANIZATIONAL MAINTENANCE
REPAIR PARTS AND SPECIAL TOOLS LISTS

SECTION I. INTRODUCTION

1. Scope.

This manual lists and authorizes spares and repair parts; special tools; special Test, Measurement, and Diagnostic Equipment (TMDE); and other special support equipment required for performance of organizational support maintenance of the Tractor, Full Tracked. It authorizes the requisitioning, issue, and disposition of spares, repair parts and special tools as indicated by the Source, Maintenance and Recoverability (SMR) codes.

2. General.

This Repair Parts and Special Tools List is divided into the following sections:

a. Section II. Repair Parts List. A list of spares and repair parts authorized by this RPSTL for use in the performance of maintenance. The list also includes parts which must be removed for replacement of the authorized parts. Parts lists are composed of functional groups in ascending alphanumeric sequence, with the parts in each group listed in ascending figure and item number sequence. Bulk materials are listed in NSN sequence.

b. Section III. Special Tools List. A list of special tools, special TMDE, and other special support equipment authorized by this RPSTL for the performance of maintenance.

c. Section IV. National Stock Number and Part Number Index. A list, in National Item Identification Number (NIIN) sequence, of all National Stock Numbers (NSN) appearing in the listings, followed by a list in alphanumeric sequence of all part numbers appearing in the listings. National stock numbers and part numbers are cross-referenced to each illustration figure and item number appearance.

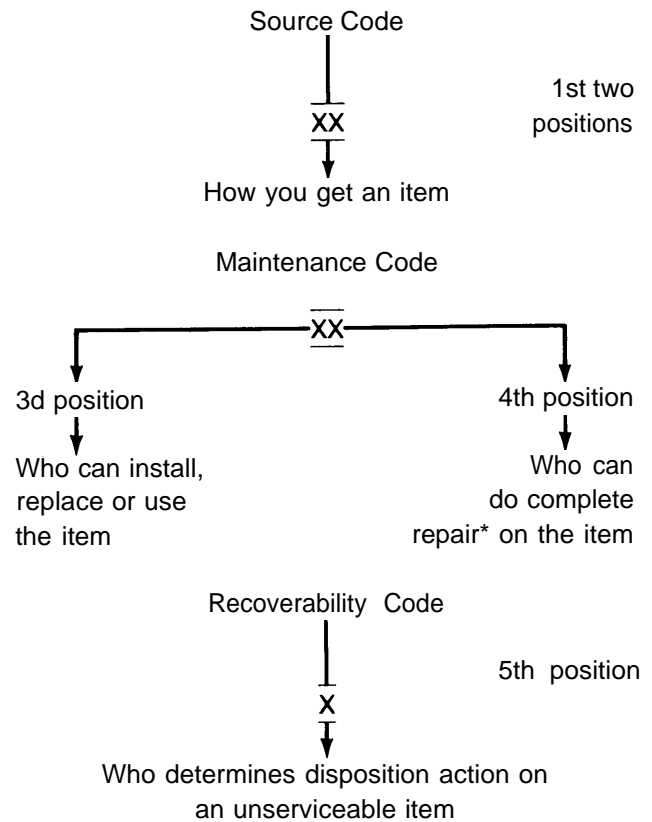
3. Explanation of Columns.

a. Illustration (Column (1)). This column is divided as follows:

(1) ((a) FIG NO.) Figure Number. Indicates the figure number illustrating an exploded view of a functional group.

(2) ((b) ITEM NO.). Indicates the number used to identify items called out in the illustration.

b. SMR CODE (Column (2)). The Source, Maintenance, and Recoverability (SMR) code is a 5-position code containing supply/requisitioning information, maintenance category authorization criteria, and disposition instructions, as shown in the following breakout:



*Complete Repair: Maintenance capacity, capability, and authority to perform all the corrective maintenance tasks of the "Repair" function in a use/user environment in order to restore serviceability to a failed item.