

TECHNICAL MANUAL

**UNIT MAINTENANCE REPAIR PARTS AND
SPECIAL TOOLS LISTS**

**TRACTOR, WHEELED, DED, LOADER BACKHOE:
WITH HYDRAULIC IMPACT TOOL
AND WITH HYDRAULIC EARTH
AUGER ATTACHMENT**

JOHN DEERE MODEL JD410 (CCE)

**WITH BUCKET, IMPACTOR,
AND EARTH DRILL
NSN 2420-00-567-0135**

This copy is a reprint which includes current pages from Change 1.

This manual supersedes TM 5-2420-222-20P, 28 February 1986.

Approved for public release; distribution is unlimited.

**UNIT MAINTENANCE REPAIR PARTS AND
 SPECIAL TOOLS LISTS**

**TRACTOR, WHEELED, DED, LOADER BACKHOE:
 WITH HYDRAULIC IMPACT TOOL
 AND WITH HYDRAULIC EARTH
 AUGER ATTACHMENT**

JOHN DEERE MODEL JD410 (CCE)

**WITH BUCKET, IMPACTOR,
 AND EARTH DRILL**

NSN 2420-00-567-0135
 Current as of 18 June 1991

REPORTING ERRORS AND RECOMMENDING IMPROVEMENTS

You can help improve this manual. If you find any mistakes or if you know of a way to improve the procedures, please let us know. Mail your letter, DA Form 2028 (Recommended Changes to Publications and Blank Forms), or DA Form 2028-2, located in the back of this manual, direct to: Commander, U.S. Army Tank-Automotive Command, ATTN: AMSTA-MB, Warren, MI 48397-5000. A reply will be furnished to you.

Approved for public release; distribution is unlimited.

TABLE OF CONTENTS

	Page	Illus Fig
SECTION I. INTRODUCTION	1	
SECTION II. REPAIR PARTS LIST	1-1	
GROUP 01 ENGINE		
0105 - VALVES, CAMSHAFTS, AND TIMING SYSTEM.....	1-1	
ROCKER ARM COVER.....	1-1	1
0106 - ENGINE LUBRICATION SYSTEM.....	2-1	
ENGINE OIL COOLER.....	2-1	2
OIL FILLER INLET.....	3-1	3
ENGINE OIL FILTER, DIPSTICK, AND VENTILATOR TUBE.....	4-1	4
OIL PAN AND GASKET.....	5-1	5
0108 - MANIFOLDS.....	6-1	
EXHAUST MANIFOLD.....	6-1	6
GROUP 02 CLUTCH		
0202 - CLUTCH RELEASE MECHANISM.....	7-1	
CLUTCH PEDAL SHAFT.....	7-1	7

* This manual supersedes TM 5-2420-222-20P, 28 February 1986.

TABLE OF CONTENTS (Con't)

	Page	Illus Fig
GROUP 03 FUEL SYSTEM		
0301 - CARBURETOR. FUEL INJECTOR	8-1	
FUEL INJECTION NOZZLE ASSEMBLY	8-1	8
0302 - FUEL PUMPS	9-1	
FUEL INJECTION SYSTEM.....	9-1	9
FUEL PUMP ASSEMBLY.....	10-1	10
0304 AIR CLEANER	11-1	
AIR INTAKE.....	11-1	11
AIR CLEANER.....	12-1	12
0306 - TANKS. LINES FITTINGS. HEADERS.....	13-1	
FUEL TANK	13-1	13
0309 - FUEL FILTERS.....	14-1	
DUAL STAGE FUEL FILTER ASSEMBLY	14-1	14
0311 - ENGINE STARTING AIDS	15-1	
COLD WEATHER STARTING AID	15-1	15
0312 - ACCELERATOR THROTTLE, OR CHOKE CONTROLS	16-1	
SPEED CONTROL LEVER AND CABLE.....	16-1	16
ACCELERATOR PEDAL AND SPEED CONTROL ROD	17-1	17
GROUP 04 EXHAUST SYSTEM		
0401 - MUFFLER AND PIPES.....	18-1	
MUFFLER.....	18-1	18
GROUP 05 COOLING SYSTEM		
0501 - RADIATOR, EVAPORATIVE COOLER, OR HEAT EXCHANGER.....	19-1	
ENGINE COOLANT HEATER AND HOSES.....	19-1	19
RADIATOR AND RELATED PARTS.....	20-1	20
0502 - COWLING, DEFLECTORS. AIR DUCTS. SHROUDS, ETC	21-1	
FAN SHROUD	21-1	21
0503 - WATER MANIFOLD. HEADERS. THERMOSTATS. AND HOUSING GASKET	22-1	
THERMOSTAT HOUSING ASSEMBLY.....	22-1	22
RADIATOR HOSES AND CLAMPS	23-1	23
0504 - WATER PUMP	24-1	
WATER PUMP ASSEMBLY	24-1	24
0505 - FAN ASSEMBLY	25-1	
FAN, BELT, AND RELATED PARTS	25-1	25
GROUP 06 ELECTRICAL SYSTEM		
0601 - GENERATOR. ALTERNATOR.....	26-1	
GENERATOR ATTACHING PARTS	26-1	26
GENERATOR ASSEMBLY. EXPLODED VIEW.....	27-1	27
GENERATOR AND RELATED PARTS.....	28-1	28
0602 - GENERATOR REGULATOR.....	29-1	
VOLTAGE REGULATOR	29-1	29
0603 - STARTING MOTOR	30-1	
STARTING MOTOR, DRIVE, AND SWITCH ASSEMBLY.....	30-1	30

TABLE OF CONTENTS (Con't)

	Page	Illus Fig
0606 - ENGINE SAFETY CONTROLS	31-1	
PRESSURE AND STARTER SAFETY SWITCH	31-1	31
0607 - INSTRUMENT OR ENGINE CONTROL PANEL	32-1	
PARKING BRAKE WARNING SWITCH AND WIRING	32-1	32
ENGINE ELECTRIC HOURMETER	33-1	33
GAGES, INDICATOR LIGHTS. AND WIRING HARNESS	34-1	34
IGNITION SWITCH	35-1	35
INSTRUMENT PANEL COVER AND DASH	36-1	36
LIGHT SWITCH AND TURN SIGNAL SWITCH	37-1	37
FLUID STARTING AID WIRING	38-1	38
0608 - MISCELLANEOUS ITEMS	39-1	
CIGAR LIGHTER	39-1	39
0609 - LIGHTS	40-1	
TURNING LIGHT AND WARNING LIGHT	40-1	40
COMBINATION REAR LIGHT ASSEMBLY	41-1	41
COMBINATION REAR LIGHT AND RELATED PARTS	42-1	42
FRONT LIGHT	43-1	43
WARNING LIGHT FLASHER	44-1	44
0610 - SENDING UNITS AND WARNING SWITCHES	45-1	
FUEL GAGE SENDING UNIT	45-1	45
0611 - HORN, SIREN	46-1	
ELECTRIC HORN	46-1	46
REVERSE WARNING ALARM 4	47-1	47
0612 - BATTERIES, STORAGE	48-1	
BATTERIES AND CABLES	48-1	48
BATTERY TRAY AND CLAMP	49-1	49
0613 - HULL OR CHASSIS WIRING HARNESS	50-1	
REVERSE WARNING ALARM AND HORN HARNESS	50-1	50
FRONT AND REAR LIGHT WARNING SYSTEM	51-1	51
ELECTRICAL WIRING SYSTEM	52-1	52
 GROUP 07 TRANSMISSION		
0700 - TRANSMISSION ASSEMBLY	53-1	
TRANSMISSION AND CASE	53-1	53
0704 - TRANSMISSION TOP COVER ASSEMBLY	54-1	
TRANSMISSION TOP COVER, USE ON SERIAL NUMBERS 235786 THRU 235999	54-1	54
TRANSMISSION TOP COVER, USE ON SERIAL NUMBERS 319995 THRU 342573	55-1	55
0705 - TRANSMISSION SHIFTING COMPONENTS	56-1	
REVERSER CONTROL LEVER LINKAGE	56-1	56
REVERSER CONTROL LEVER	57-1	57
0710 - TRANSMISSION ASSEMBLY AND ASSOCIATED PARTS	58-1	
REVERSER CLUTCH HOUSING	58-1	58
0721 - COOLERS. PUMPS, MOTORS	59-1	
TRANSMISSION OIL FILTER	59-1	59
TRANSMISSION OIL COOLER	60-1	60
TRANSMISSION FILTER SCREEN	61-1	61
 GROUP 10 FRONT AXLE		
1000 - FRONT AXLE ASSEMBLY	62-1	
FRONT AXLE ASSEMBLY	62-1	62

TABLE OF CONTENTES (Con't)

	Page	Illus Fig
GROUP 11	REAR AXLE	
	1103 - PLANETARY OR FINAL DRIVE	63-1
	REAR AXLE HOUSING	63-1 63
GROUP 12	BRAKES	
	1201 - HANDBRAKES	64-1
	PARKING BRAKE LEVER AND LINKAGE	64-1 64
	1204 - HVDRUALIC BRAKE SYSTEM	65-1
	BRAKE VALVE AND OIL LINES	65-1 65
	BRAKE VALVE HOUSING RELATED PARTS	66-1 66
	1206 - MECHANICAL BRAKE SYSTEM	67-1
	BRAKE PEDALS	67-1 67
GROUP 13	WHEELS AND TRACKS	
	1311 - WHEEL ASSEMBLY	68-1
	FRONT WHEEL ASSEMBLY	68-1 68
	REAR WHEEL STEEL DISK	69-1 69
	1313 - TIRES, TUBES. TIRE CHAINS	70-1
	TIRES, REAR AND FRONT	70-1 70
GROUP 14	STEERING	
	1401 - MECHANICAL STEERING GEAR ASSEMBLY	71-1
	TIE-ROD ASSEMBLY	71-1 71
	STEERING COLUMN AND RELATED PARTS	72-1 72
	1411 - HOSES, LINES, FITTINGS	73-1
	POWER STEERING CYLINDER HYDRAULIC HOSES, USE ON SERIAL NUMBERS 235786 THRU 235999	73-1 73
	POWER STEERING CYLINDER HYDRAULICS, USE ON SERIAL NUMBERS 319995 THRU 342573	74-1 74
	POWER STEERING CYLINDER OIL LINES, USE ON SERIAL NUMBERS 235786 THRU 235999	75-1 75
	POWER STEERING VALVE HYDRAULICS USE ON SERIAL NUMBERS 319995 THRU 342573	76-1 76
	POWER STEERING VALVE RETURN LINE AND ACCUMULATOR HOSE, USE ON SERIAL NUMBERS 235786 THRU 235999	77-1 77
	1412 - HYDRAULIC OR AIR CYLINDERS	78-1
	POWER STEERING CYLINDER AND PINS. USE ON SERIAL NUMBERS 235786 THRU 235999	78-1 78
	POWER STEERING CYLINDER AND PINS, USE ON SERIAL NUMBERS 319995 THRU 342573	79-1 79
GROUP 15	FRAME TOWING ATTACHMENTS, DRAWBARS, AND ARTICULATION SYSTEMS	
	1501 - FRAME ASSEMBLY	80-1
	FRONT SUPPORT	80-1 80
	1502 - COUNTERWEIGHTS	81-1
	SINGLE COUNTERWEIGHT	81-1 81

TABLE OF CONTENTS (Con't)

	Page	Illus Fig
GROUP 18	BODY, CAB, HOOD, AND HULL	
1801 - BODY, CAB, HOOD, AND HULL ASSEMBLIES.....	82-1	
BACKHOE CONTROL GUARDS	82-1	82
COWL.....	83-1	83
HOOD AND RELATED PARTS.....	84-1	84
GRILLE HOUSING AND RELATED PARTS.....	85-1	85
1802 - FENDERS. RUNNING BOARDS WITH MOUNTING AND ATTACHING PARTS, OUTRIGGERS. WINDSHIELD, GLASS, ETC	86-1	
STEP	86-1	86
STABILIZER	87-1	87
1805 - FLOORS, SUBFLOORS, AND RELATED COMPONENTS.....	88-1	
LEFT PLATFORM AND SUPPORT	88-1	88
RIGHT PLATFORM AND RELATED PARTS	89-1	89
CENTER PLATFORM. REAR PLATFORMS, AND BATTERY COVER	90-1	90
1806 - UPHOLSTERY, SEATS, AND CARPETS	91-1	
SEAT LOWER SUPPORT AND SWIVEL	91-1	91
DELUXE SEAT SUPPORT	92-1	92
SEAT AND SEATBELT	93-1	93
1808 - STOWAGE RACKS, BOXES, STRAPS, CARRYING CASES, CABLE REELS, HOSE REELS, ETC	94-1	
BACKHOE VALVE BOX AND COVER.....	94-1	94
TOOLBOX AND TRAY	95-1	95
CONTROL BOX	96-1	96
GROUP 22	BODY. CHASSIS, AND HULL ACCESSORY ITEMS	
2202 - ACCESSORY ITEMS	97-1	
REFLECTORS, USE ON SERIAL NUMBERS 319995 THRU 342573.....	97-1	97
2210 - DATA PLATES AND INSTRUCTION HOLDERS.....	98-1	
LOADER AND BACKHOE DECALS	98-1	98
TRACTOR DECALS.....	99-1	99
TRACTOR LABELS.....	100-1	100
GROUP 24	HYDRAULIC AND FLUID SYSTEMS	
2402 - MANIFOLD AND/OR CONTROL VALVES.....	101-1	
PRESSURE CONTROL VALVE.....	101-1	101
HYDRAULIC RELIEF VALVE.....	102-1	102
HYDRAULIC IMPACTOR VALVE AND MANIFOLD.....	103-1	103
JAW CONTROL VALVE.....	104-1	104
LOADER VALVE MOUNTING BRACKET AND MANIFOLD BLOCK.....	106-1	106
2403 - HYDRAULIC CONTROLS AND/OR MANUAL CONTROLS.....	108-1	
JAW VALVE LINKAGE	108-1	108
BACKHOE CONTROL LEVERS AND LINKAGE, USE ON SERIAL NUMBERS 235786 THRU 235999.....	109-1	109
BACKHOE CONTROL LEVERS AND LINKAGE, USE ON SERIAL NUMBERS 319995 THRU 342573.....	110-1	110
LOADER CONTROL VALVE LINKAGE	111-1	111

TABLE OF CONTENTS (Con't)

	Page	Illus Fig
2406 - STRAINERS, FILTERS, LINES, AND FITTINGS, ETC.....	112-1	
HYDRAULIC OIL LINE. PUMP TO COOLER	112-1	112
HYDRAULIC OIL LINES TO PUMP, CLUTCH CONTROL VALVE. FILTER RELIEF VALVES, AND RETURN	113-1	113
LOADER LEFT- AND RIGHT-HAND BOOM CYLINDER HOSES.....	114-1	114
AUGER HYDRAULIC LINES AND FITTINGS, USE ON SERIAL NUMBERS 319995 THRU 342573.....	115-1	115
JAW BUCKET HYDRAULIC HOSES. USE ON SERIAL NUMBERS 319995 THRU 342573.....	116-1	116
CROWD AND BUCKET CYLINDER HYDRAULICS, USE ON SERIAL NUMBERS 319995 THRU 342573	117-1	117
CROWD CYLINDER LINES AND FITTINGS	118-1	118
HYDRAULIC HOSES, USE ON SERIAL NUMBERS 235786 THRU..... 235999	119-1	119
BACKHOE CONTROL TO MANIFOLD BLOCK OIL LINE AND FITTINGS	120-1	120
BACKHOE BOOM, CROWD AND BUCKET OIL LINES AND FITTINGS, USE ON SERIAL NUMBERS 319995 THRU 342573	121-1	121
BACKHOE BOOM, CROWD AND BUCKET OIL LINES, USE ON SERIAL NUMBERS 235786 THRU 235999.....	122-1	122
BACKHOE STABILIZER AND SWING CIRCUIT OIL LINES AND FITTINGS.....	123-1	123
BACKHOE PRESSURE AND RETURN CIRCUIT OIL LINES AND FITTINGS, USE ON SERIAL NUMBERS 319995 THRU 342573.....	124-1	124
BACKHOE PRESSURE AND RETURN CIRCUIT OIL LINES AND FITTINGS, USE ON SERIAL NUMBERS 235786 THRU 235999.....	125-1	125
BACKHOE OIL LINES AND FITTINGS, USE ON SERIAL NUMBERS 319995 THRU 342573	126-1	126
LOADER LEFT AND RIGHT BUCKET CYLINDER CIRCUITS	127-1	127
LOADER PRESSURE AND RETURN CIRCUITS	128-1	128
HYDRAULIC PUMP OIL PRESSURE LINES.....	129-1	129
HYDRAULIC OIL FILTER.....	130-1	130
JAW CYLINDER HOSES	131-1	131
HYDRAULIC IMPACTOR HOSE.....	132-1	132
VALVE LINES AND FITTINGS.....	133-1	133
2407 - HYDRAULIC CYLINDERS.....	134-1	
LOADER BOOM ASSEMBLY.....	134-1	134
JAW BUCKET CYLINDER	135-1	135
BACKHOE BOOM CYLINDER.....	136-1	136
BACKHOE SWING CYLINDER.....	137-1	137
BACKHOE BUCKET CYLINDER, USE ON SERIAL NUMBERS 235786 THRU 235999.....	138-1	138
BACKHOE CROWD CYLINDER.....	139-1	139
BACKHOE STABILIZER CYLINDER	140-1	140
LOADER BUCKET CYLINDER	141-1	141
 GROUP 47		
GAGES (NONELECTRICAL), WEIGHING AND MEASURING DEVICES		
4701 - INSTRUMENTS	142-1	
TACHOMETER	142-1	142
4702 - GAGES, MOUNTINGS, LINES, AND FITTINGS	143-1	
AIR CLEANER RESTRICTION INDICATOR	143-1	143

TABLE OF CONTENTS (Con't)

	Page	Illus Fig
GROUP 74	CRANES, SHOVELS, AND EARTHMOVING EQUIPMENT COMPONENTS	
7412 - BACKHOE ATTACHMENTS	144-1	
JAW BUCKET	144-1	144
BACKHOE DIPPERSTICK	145-1	145
BACKHOE BOOM, USE ON SERIAL NUMBERS 319995 THRU 342573	146-1	146
BACKHOE BOOM. USE ON SERIAL NUMBERS 235786 THRU 235999	147-1	147
BACKHOE SWING FRAME, USE ON SERIAL NUMBERS 319995 THRU 342573	148-1	148
BACKHOE SWING FRAME. USE ON SERIAL NUMBERS 235786 THRU 235999	149-1	149
BACKHOE MAIN FRAME AND TIE BARS, USE ON SERIAL NUMBERS 319995 THRU 342573	150-1	150
BACKHOE MAIN FRAME AND TIE BARS, USE ON SERIAL NUMBERS 235786 THRU 235999	151-1	151
7437 - LOADER BUCKET ASSEMBLY OR FORKLIFT.	152-1	
LOADER	152-1	152
BUCKET	153-1	153
LOADER SIDE FRAMES	154-1	154
BUCKET LEVEL INDICATOR	155-1	155
LOADER BUCKET LINKAGE	156-1	156
GROUP 95	GENERAL USE STANDARDIZED PARTS	
9501 - BULK MATERIEL	BULK-1	
BULK MATERIEL	BULK-1	BULK
GROUP 99	PARTS PECULIAR	
9901 - MULTILISTED PARTS	157-1	
AUGER HYDRAULIC HOSES AND RELATED PARTS	157-1	157
IMPACTOR LINES AND FITTINGS	158-1	158
HYDRAULIC EARTH DRILL	159-1	159
HYDRAULIC BACKHOE IMPACTOR	160-1	160
BACKHOE IMPACTOR WORKING TOOLS	161-1	161
HYDRAULIC BORING HEAD	162-1	162
HYDRAULIC BORING HEAD MOTOR AND RELATED PARTS	163-1	163
IMPACTOR ADAPTER	164-1	164
SECTION III	SPECIAL TOOLS LIST (NOT APPLICABLE)	
SECTION IV	CROSS-REFERENCE INDEXES	
	NATIONAL STOCK NUMBER INDEX	I-1
	PART NUMBER INDEX	I-17
	FIGURE AND ITEM NUMBER INDEX	I-50

**UNIT MAINTENANCE REPAIR
PARTS AND SPECIAL
TOOLS LISTS**

SECTION I. INTRODUCTION

1. Scope.

This RPSTL lists and authorizes spares and repair parts; special tools; special test, measurement, and diagnostic equipment (TMDE); and other special support equipment required for performance of Unit Maintenance of the Loader Backhoe Wheeled Tractor. It authorizes the requisitioning, issue, and disposition of spares, repair parts and special tools as indicated by the source, maintenance and recoverability (SMR) codes.

2. General.

In addition to Section I. Introduction, this Repair Parts and Special Tools List is divided into the following sections:

a. *Section II. Repair Parts List.* A list of spares and repair parts authorized by this RPSTL for use in the 1st performance of maintenance. The list also includes parts which must be removed for replacement of the authorized parts. Parts lists are composed of functional groups in ascending alphanumeric sequence, with the parts in each group listed in ascending figure and item number sequence. Bulk materials are listed in item name sequence. Repair kits are listed separately in their own functional group within Section II. Repair parts for reparable special tools are also listed in the section. Items listed are shown on the associated illustration(s)/figure(s).

b. *Section III. Special Tools List.* A list of special tools, special TMDE, and other special support equipment authorized by this RPSTL (as indicated by Basis of Issue (BOI) information in DESCRIPTION AND USABLE ON CODE column) for the performance of maintenance.

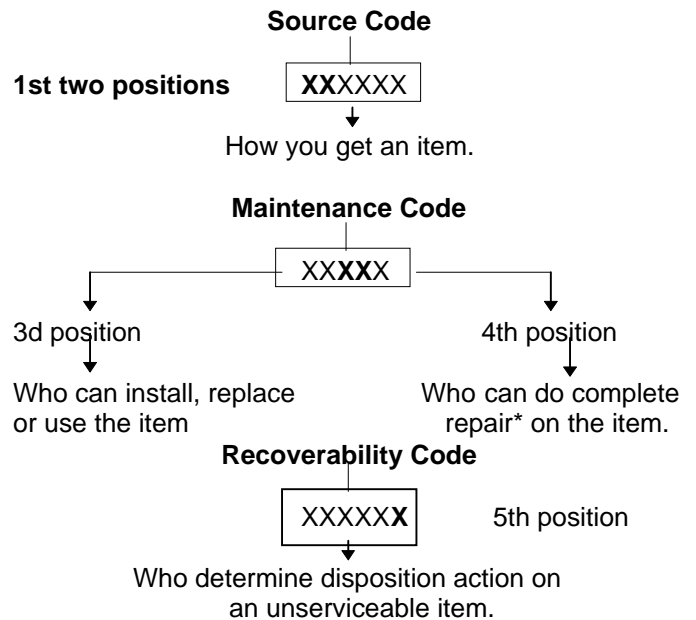
c. *Section IV. Cross-reference Indexes.* A list, in National Item Identification Number (NIIN) sequence, of all National stock numbered items appearing in the listing, followed by a list in alphanumeric sequence of all part numbers appearing; in the listings. National stock numbers and part numbers are cross-referenced to each illustration/figure and item number appearance. The figure and item number index lists figure and item

numbers in alphanumeric sequence and cross-references NSN, CAGE, and part numbers.

3. Explanation of Columns (Sections II and III).

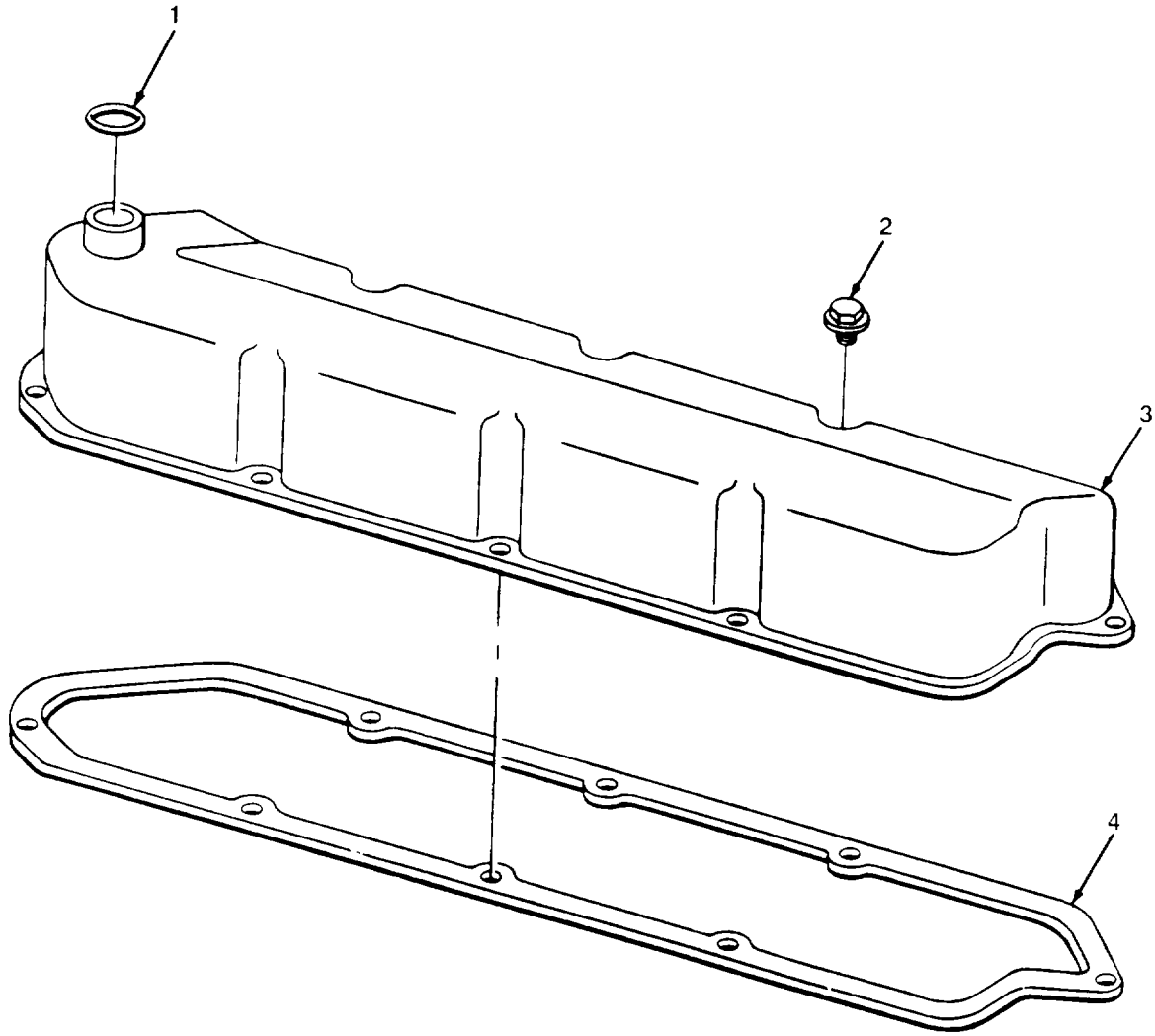
a. *ITEM NO. (Column (1)).* Indicates the number used to identify items called out in the illustration.

b. *SMR CODE (Column (2)).* The Source, Maintenance, and Recoverability (SMR) code is a 5-position code containing supply/requisitioning information, maintenance category authorization criteria, and disposition instructions, as shown in the following breakout.



**Complete Repair.* Maintenance capacity, capability, and authority to perform all corrective maintenance tasks of the "Repair" function in a use/user environment in order to restore serviceability to a failed item.

(1) *Source Code.* The source code tells you how to get an item needed for maintenance, repair, or overhaul of an end item/equipment. Explanations of source codes follows:



TA506374

FIGURE 1. ROCKER ARM COVER.

SECTION II

(1) ITEM NO	(2) SMR CODE	(3) CAGEC	(4) PART NUMBER	(5) DESCRIPTION AND USABLE ON CODES (UOC)	(6) QTY
				GROUP 01 ENGINE	
				GROUP 0105 VALVES, CAMSHAFTS, AND TIMING SYSTEM	
				FIG. 1 ROCKER ARM COVER	
*	1	PAOZZ 75160	R495R	PACKING, PREFORMED PART OF KIT P/N AR97191 PART OF KIT P/N AR100426 PART OF KIT P/N RE38857	1
	2	PAOZZ 75160	AR45530	BOLT, ASSEMBLED WASH	8
	3	PFOZZ 75160	AT18015	ROCKER ARM COVER	1
*	4	PAOZZ 75160	AR100596	GASKET PART OF KIT P/N AR97191 PART OF KIT P/N AR100426 PART OF KIT P/N RE38857	1

END OF FIGURE

7
8 AND 9

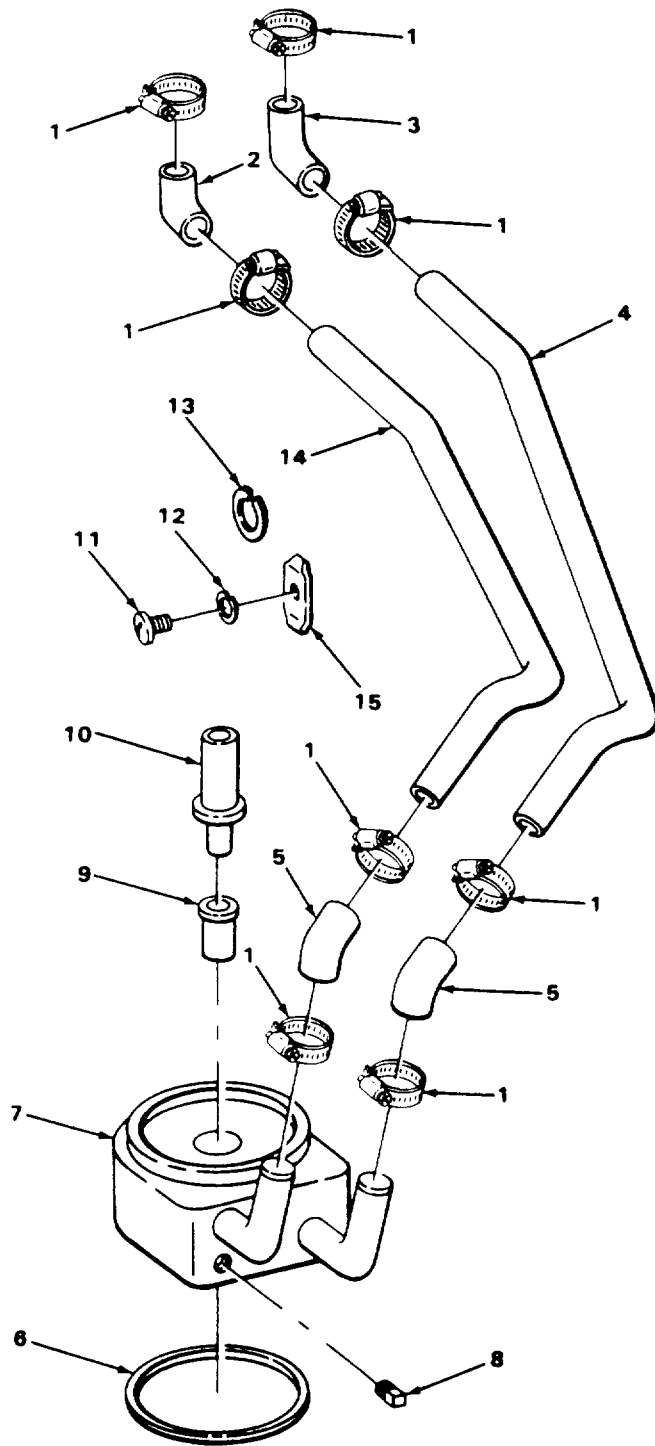
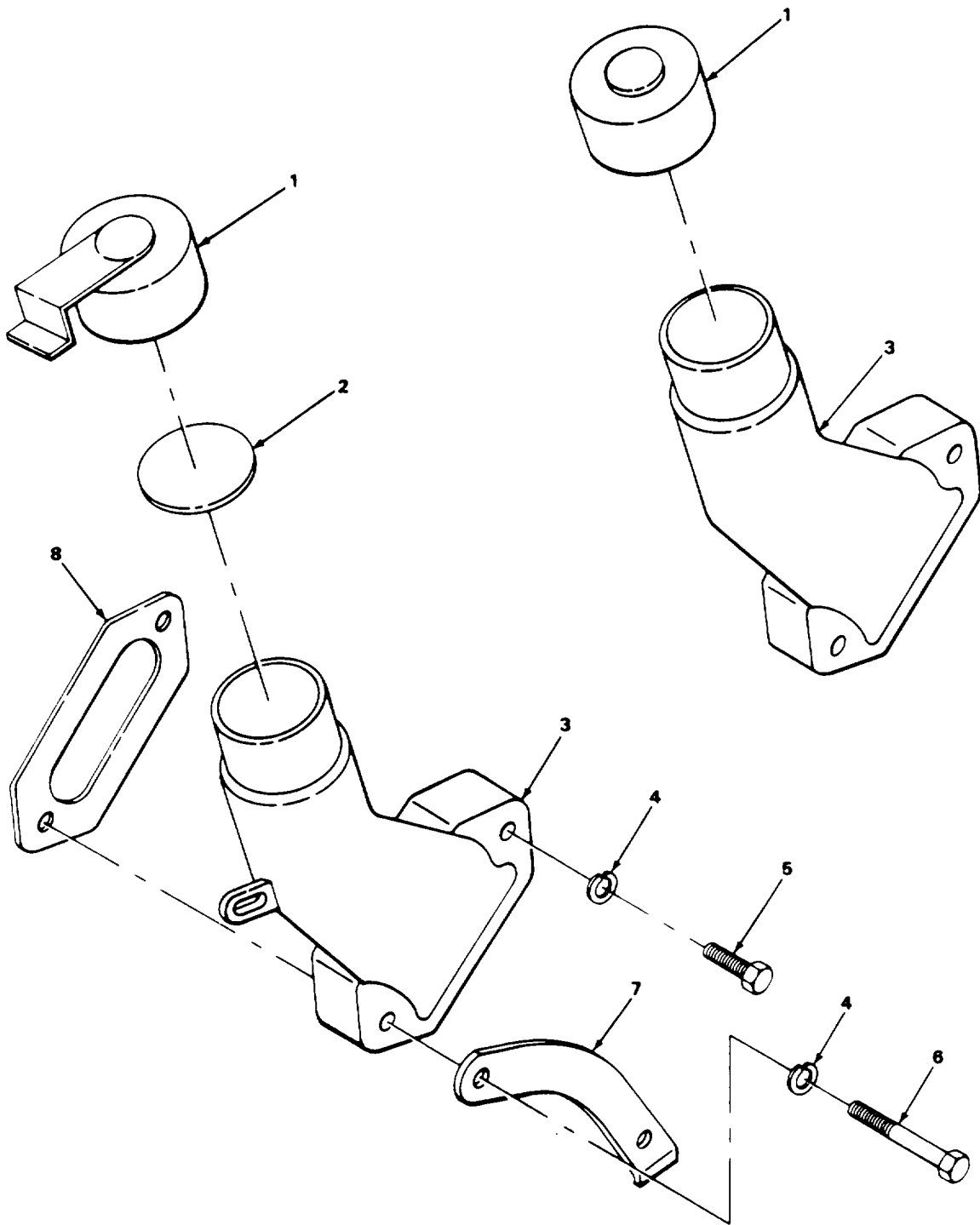


FIGURE 2. ENGINE OIL COOLER.

TA506376

SECTION II					
(1)	(2)	(3)	(4)	(5)	(6)
ITEM NO	SMR CODE	CAGEC	PART NUMBER	DESCRIPTION AND USABLE ON CODES (UOC)	QTY
GROUP 0106 ENGINE LUBRICATION SYSTEM					
FIG. 2 ENGINE OIL COOLER					
1	PAOZZ	96906	MS35842-10	CLAMP, HOSE.....	8
2	PFOZZ	75160	T22942	HOSE, NONMETALLIC	1
3	PFOZZ	75160	R48989	HOSE, NONMETALLIC	1
4	PFOZZ	75160	R55126	PIPE, BENT, METALLIC.....	1
5	PFOZZ	75160	R55127	HOSE, NONMETALLIC	2
6	PAOZZ	75160	R70956	PACKING, PREFORMED	1
*	PAOZZ	75160	AR64415	COOLER, LUBRICATING	1
8	PFOZZ	75160	R56947	.PLUG, MACHINE THREAD	1
9	PFOZZ	75160	R77332	.VALVE, SAFETY RELIEF	1
10	PFOZZ	75160	T31306	NIPPLE, OIL COOLER.....	1
11	PFOZZ	75160	21H1312	SCREW, MACHINE	1
12	PAOZZ	75160	12H295	WASHER, LOCK.....	1
13	PAOZZ	75160	24H1304	WASHER,FLAT.....	1
14	PFOZZ	75160	R55125	TUBE, BENT, METALLIC	1
15	PFOZZ	75160	R55129	STRAP, RETAINING	1

END OF FIGURE



TA506377

FIGURE 3. OIL FILLER INLET.

SECTION II					
(1)	(2)	(3)	(4)	(5)	(6)
ITEM	SMR		PART		
NO	CODE	CAGEC	NUMBER	DESCRIPTION AND USABLE ON CODES (UOC)	QTY
GROUP 0106 ENGINE LUBRICATION SYSTEM					
FIG. 3 OIL FILLER INLET					
1	PFOZZ	75160	DP21518	CAP, FILLER OPENING USE ON SERIAL 1	
				NUMBERS 319995 THRU 342573 ONLY..... 1	
1	PAOZZ	75160	T20294	CAP, FILLER OPENING USE ON SERIAL 1	
				NUMBERS 235786 THRU 235999 ONLY..... 1	
*	2	PAOZZ	75160	T20328	DISK, SOLID, PLAIN PART OF KIT P/N 1
				RE38857 1	
3	PFOZZ	75160	DP21520	FILLER NECK USE ON SERIAL NUMBERS 1	
				319995 THRU 342573 ONLY..... 1	
3	PAOZZ	75160	T23614	FILLER NECK USE ON SERIAL NUMBERS 1	
				235786 THRU 235999 ONLY 1	
4	PAOZZ	75160	24H1304	WASHER, FLAT..... 2	
5	PAOZZ	75160	19H2665	SCREW, CAP, HEXAGON H..... 1	
6	PFOZZ	96906	MS90727-73	SCREW, CAP, HEXAGON H..... 1	
7	PFOZZ	75160	R55128	PLATET, CLIP RETAINER 1	
*	8	PFOZZ	75160	T20336	GASKET PART OF KIT P/N RE38857 1

END OF FIGURE