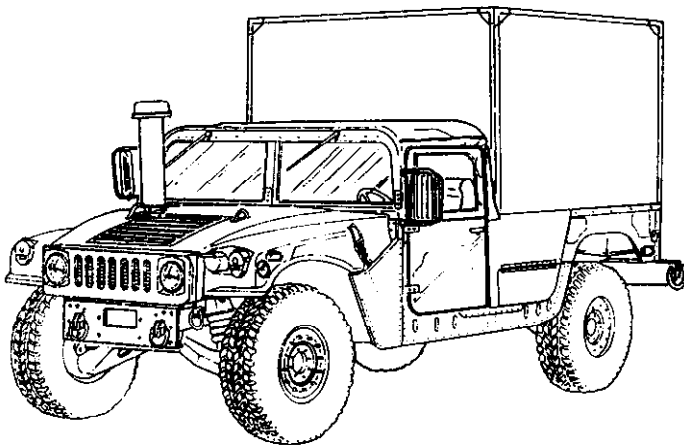


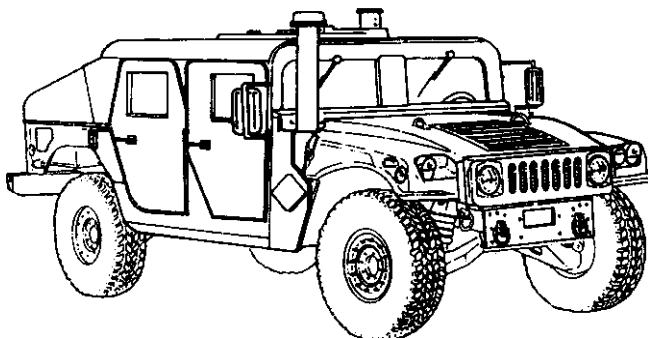
TECHNICAL MANUAL
UNIT, DIRECT SUPPORT, AND
GENERAL SUPPORT MAINTENANCE

FOR

TRUCK, UTILITY: S250 SHELTER
CARRIER, 4X4, M1113
(2320-01-412-0143) (EIC: B6B)



TRUCK, UTILITY: UP-ARMORED
CARRIER, 4X4, M1114
(2320-01-413-3739) (EIC: B6C)



BODY AND ACCESSORIES (UNIT) MAINTENANCE	10-1
SPECIAL PURPOSE BODIES (UNIT) MAINTENANCE	11-1
SPECIAL PURPOSE KITS (UNIT) MAINTENANCE	12-1
PREPARATION FOR STORAGE OR SHIPMENT	13-1
TROUBLESHOOTING (DS)/(GS)	14-1
ENGINE (DS) MAINTENANCE	15-1
FUEL SYSTEM (DS) MAINTENANCE	16-1
COOLING SYSTEM (DS) MAINTENANCE	17-1
ELECTRICAL SYSTEM (DS) MAINTENANCE	18-1
TRANSMISSION (DS) MAINTENANCE	19-1
TRANSFER CASE (DS) MAINTENANCE	20-1
PROPELLER SHAFTS, AXLES, AND SUSPENSION (DS) MAINTENANCE	21-1
SERVICE BRAKE SYSTEM (DS) MAINTENANCE	22-1
STEERING SYSTEM (DS) MAINTENANCE	23-1
FRAME (DS) MAINTENANCE	24-1
SPECIAL PURPOSE BODIES (DS) MAINTENANCE	25-1
SPECIAL PURPOSE KITS (DS) MAINTENANCE	26-1
ELECTRICAL SYSTEM (GS) REPAIR	27-1
TRANSMISSION (GS) REPAIR	28-1
TRANSFER CASE (GS) REPAIR	29-1
DIFFERENTIAL (GS) REPAIR	30-1
STEERING SYSTEM (GS) REPAIR	31-1
FRAME (GS) REPAIR	32-1
BODY (GS) REPAIR	33-1
SUSPENSION (GS) MAINTENANCE	34-1

Approved for public release; distribution is unlimited.

TECHNICAL MANUAL
NO. 9-2320-387-24-2

HEADQUARTERS
DEPARTMENTS OF THE ARMY AND THE AIR FORCE
WASHINGTON, D.C., 31 December 1997

TECHNICAL ORDER
NO. 36A12-1A-3052-2

**TECHNICAL MANUAL
VOLUME 2 OF 2
UNIT, DIRECT SUPPORT, AND
GENERAL SUPPORT MAINTENANCE
FOR**

**TRUCK, UTILITY: S250 SHELTER
CARRIER, 4X4, M1113
(2320-01-412-0143) (EIC: B6B)**

**TRUCK, UTILITY: UP-ARMORED
CARRIER, 4X4, M1114
(2320-01-413-3739) (EIC: B6C)**

Approved for public release; distribution is unlimited.

REPORTING ERRORS AND RECOMMENDING IMPROVEMENTS

You can help improve this publication. If you find any mistakes or if you know of a way to improve the procedures, please let us know. Submit your DA Form 2028 (Recommended Changes to Equipment Technical Publications), through the Internet, on the Army Electronic Product Support (AEPS) website. The Internet address is <http://aeprs.ria.army.mil>. If you need a password, scroll down and click on "ACCESS REQUEST FORM." The DA Form 2028 is located in the ONLINE FORMS PROCESSING section of the AEPS. Fill out the form and click on SUBMIT. Using this form on the AEPS will enable us to respond quicker to your comments and better manage the DA Form 2028 program. You may also mail, fax or email your letter or DA Form 2028 direct to: AMSTA-LC-CI Tech Pubs, TACOM-RI, 1 Rock Island Arsenal, Rock Island, IL 61299-7630. The email address is TACOM-TECH-PUBS@ria.army.mil. The fax number is DSN 793-0726 or Commercial (309) 782-0726.

This manual is published in two parts. TM 9-2320-387-24-1 contains chapters 1 through 9. TM 9-2320-387-24-2 contains chapters 10 through 33 and appendices A through H.

This manual contains a table of contents and alphabetical index for both volumes 1 and 2.

VOLUME 2 OF 2

		Page
CHAPTER 10	BODY AND ACCESSORIES (UNIT) MAINTENANCE	10-1
Section I.	Body Maintenance.	10-1
II.	Body Accessories Maintenance	10-100
CHAPTER 11	SPECIAL PURPOSE BODIES (UNIT) MAINTENANCE	11-1
Section I.	Weapon Carrier Body Maintenance	11-1
II.	Shelter Carrier Body Maintenance	11-133
III.	Air Conditioning Maintenance	11-145
IV.	Rear Cargo Door Access	11-159
CHAPTER 12	SPECIAL PURPOSE KITS (UNIT) MAINTENANCE	12-1
Section I.	Engine/Crew Compartment Heater Maintenance	12-1
II.	Communications Kits Maintenance	12-27
III.	Winch Kit Maintenance	12-51
IV.	Deep Water Forging Kit Maintenance	12-69
CHAPTER 13	PREPARATION FOR STORAGE OR SHIPMENT	13-1
Section I.	General Instructions	13-1
II.	Preparation for Storage and Shipment	13-2
CHAPTER 14	TROUBLESHOOTING (DS)/(GS)	14-1
Section I.	Mechanical Troubleshooting.	14-1
II.	Air Conditioning Troubleshooting.	14-17
CHAPTER 15	ENGINE (DS) MAINTENANCE	15-1
Section I.	General Engine Maintenance	15-1
II.	Engine Replacement	15-47
CHAPTER 16	FUEL SYSTEM (DS) MAINTENANCE	16-1
CHAPTER 17	COOLING SYSTEM (DS) MAINTENANCE	17-1

	Page
CHAPTER 18	18-1
ELECTRICAL SYSTEM (DS) MAINTENANCE	18-1
CHAPTER 19	19-1
TRANSMISSION (DS) MAINTENANCE	19-1
CHAPTER 20	20-1
TRANSFER CASE (DS) MAINTENANCE	20-1
CHAPTER 21	21-1
PROPELLER SHAFTS, AXLES, AND SUSPENSION (DS) MAINTENANCE	21-1
CHAPTER 22	22-1
SERVICE BRAKE SYSTEM (DS) MAINTENANCE	22-1
CHAPTER 23	23-1
STEERING SYSTEM (DS) MAINTENANCE	23-1
CHAPTER 24	24-1
FRAME (DS) MAINTENANCE	24-1
CHAPTER 25	25-1
SPECIAL PURPOSE BODIES (DS) MAINTENANCE	25-1
Section I. Armament Carrier Maintenance	25-1
II. Air Conditioning Maintenance	25-37
CHAPTER 26	26-1
SPECIAL PURPOSE KITS (DS) MAINTENANCE	26-1
CHAPTER 27	27-1
ELECTRICAL SYSTEM (GS) REPAIR	27-1
CHAPTER 28	28-1
TRANSMISSION (GS) REPAIR	28-1
CHAPTER 29	29-1
TRANSFER CASE (GS) REPAIR	29-1
CHAPTER 30	30-1
DIFFERENTIAL (GS) REPAIR	30-1
CHAPTER 31	31-1
STEERING SYSTEM (GS) REPAIR	31-1

	Page
CHAPTER 32	32-1
FRAME (GS) REPAIR	
CHAPTER 33	33-1
BODY (GS) REPAIR	
CHAPTER 34	34-1
SUSPENSION (GS) MAINTENANCE	
APPENDIX A	A-1
REFERENCES	
APPENDIX B	B-1
MAINTENANCE ALLOCATION CHART (MAC)	
APPENDIX C	C-1
EXPENDABLE/DURABLE SUPPLIES AND MATERIALS LIST	
APPENDIX D	D-1
ILLUSTRATED LIST OF MANUFACTURED ITEMS	
APPENDIX E	E-1
TORQUE LIMITS	
APPENDIX F	F-1
BODY REPAIR MATERIALS	
APPENDIX G	G-1
MANDATORY REPLACEMENT PARTS	
APPENDIX H	H-1
WIRING DIAGRAMS AND SCHEMATIC	
INDEX	INDEX 1

CHAPTER 10

BODY AND ACCESSORIES (UNIT) MAINTENANCE

Section I. BODY MAINTENANCE

10-1. BODY MAINTENANCE TASK SUMMARY

TASK PARA.	PROCEDURES	PAGE NO.
10-2.	Fuel Filler Housing Maintenance	10-3
10-3.	Fuel Door Replacement	10-5
10-4.	Fuel Door Catch Replacement	10-6
10-5.	Hood Latch Maintenance	10-7
10-6.	Hood Latch Bracket Replacement	10-9
10-7.	Hood Latch Tapping Block Replacement	10-11
10-8.	Hood Prop Rod and Bracket Maintenance	10-12
10-9.	Hood and Hinge Maintenance	10-14
10-9.1.	Jack Retaining Strap Replacement	10-18.1
10-10.	Outer Hood Seal Replacement	10-19
10-11.	Side Hood Stop Replacement	10-20
10-12.	Center Hood Stop Replacement	10-21
10-13.	Footman Loop and Strap Maintenance	10-22
10-14.	Center Hood Stop Guide Replacement	10-23
10-15.	Front Grille Screen Replacement	10-24
10-16.	Grille Frame Replacement	10-25
10-17.	Hood Grille and Screen Replacement	10-27
10-18.	Headlight Housing Replacement	10-28
10-19.	Door Handle Assembly Maintenance	10-30
10-20.	Fixed Rear Door Replacement	10-33
10-21.	Engine Access Cover Flexible Latch and Holddown Strike Replacement	10-34
10-22.	Engine Access Cover Maintenance	10-35
10-23.	Engine Left Splash Shield Maintenance	10-38
10-24.	Engine Right Splash Shield Maintenance	10-42
10-25.	Engine Left Splash Shield Access Cover Replacement	10-46
10-26.	Windshield Glass and Weatherstrip Replacement (M1113)	10-47
10-27.	Windshield Glass Maintenance (M1114)	10-49
10-28.	Windshield Assembly Maintenance (M1113)	10-52
10-29.	Windshield Retention Bracket Replacement	10-54
10-30.	Left Outer Cowl Insulation Replacement	10-55
10-31.	Left Front Cowl Insulation Replacement	10-56
10-32.	Right Front Cowl Insulation Replacement	10-58
10-33.	Tunnel Interior Side Insulation Replacement	10-59

10-1. BODY MAINTENANCE TASK SUMMARY (Cont'd)

TASK PARA.	PROCEDURES	PAGE NO.
10-34.	Rear Seat Floor Insulation Replacement	10-60
10-35.	Tailgate Chain and Brackets Replacement	10-61
10-36.	Camouflage Screen Stowage Straps Replacement	10-63
10-37.	Pioneer Tool Kit Stowage Strap and Bracket Maintenance	10-64
10-38.	Tailgate Replacement	10-65
10-39.	Tailgate Upper Hinge Replacement	10-67
10-40.	Driver's Seat Assembly Replacement	10-69
10-41.	Driver's Seat Assembly Maintenance	10-70
10-42.	Battery Box Cover Catch Replacement	10-72
10-43.	Companion Seat Assembly and Battery Box Cover Replacement	10-73
10-44.	Companion Seat Assembly Maintenance	10-74
10-45.	Passenger Seat Replacement	10-76
10-45.1.	Passenger Seat Maintenance	10-76.1
10-46.	Three Point Seatbelt Brackets Replacement	10-77
10-47.	Three Point Seatbelt Maintenance	10-78
10-48.	Steering Wheel Lock Replacement	10-82
10-49.	Cargo Bulkhead Replacement	10-83
10-50.	Cargo Bulkhead Extension Maintenance	10-84
10-51.	Cargo Bulkhead Mounting Brackets Replacement	10-86
10-52.	Cargo Tiedown Replacement	10-87
10-53.	Fire Extinguisher Bracket Maintenance	10-88
10-54.	Body Hinge Mount Replacement	10-89
10-55.	Airlift Bracket-to-Hood Seal Replacement	10-90
10-56.	Body Repair	10-91
10-57.	B-Pillar Replacement	10-97
10-58.	M13 Decontamination Brackets Installation	10-98
10-58.1.	Floor Drain Hole Plate Installation	10-98.2
10-58.2.	Underbody Protection Kit Replacement	10-98.4

10-2. FUEL FILLER HOUSING MAINTENANCE

This task covers:

- | | |
|---|---|
| <ul style="list-style-type: none"> a. Removal b. Inspection | <ul style="list-style-type: none"> c. Installation |
|---|---|

INITIAL SETUP:

Tools

General mechanic's tool kit:
 automotive (Appendix B, Item 1)
 Maintenance and repair shop equipment:
 automotive (Appendix B, Item 2)

Materials/Parts

Sealing compound
 (Appendix C, Item 72.1)

Manual References

TM 9-2320-387-10
 TM 9-2320-387-24P

Equipment Condition

Fuel door open (M1114 only) (TM 9-2320-387-10).

Maintenance Level

Unit

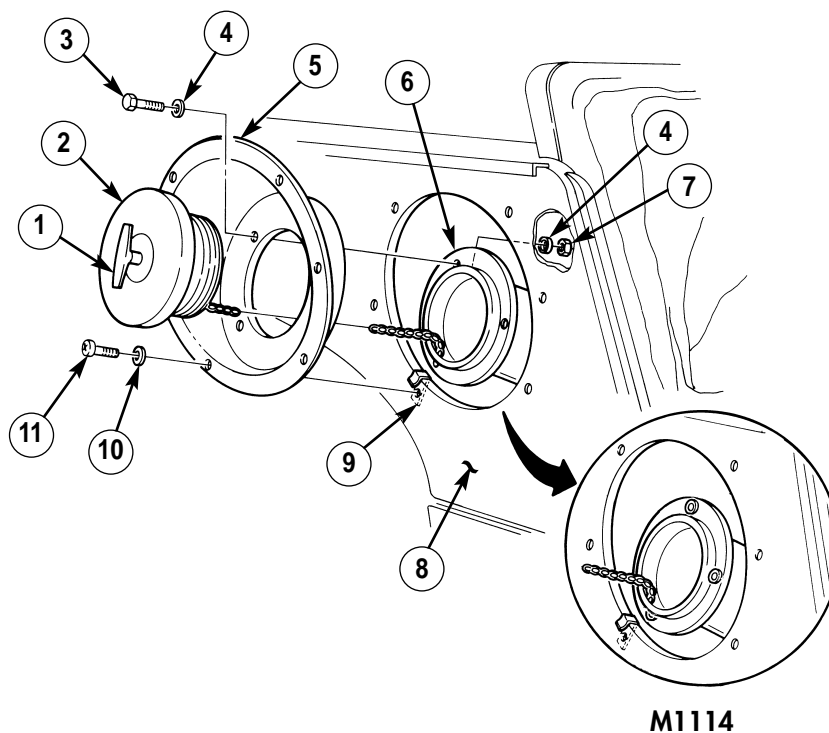
a. Removal

1. Turn filler cap T-handle (1) and remove filler cap (2) from filler spout (6).

NOTE

M1114 vehicles are equipped with plusnuts instead of nuts and washers.

2. Remove three nuts (7), washers (4), capscrews (3), and washers (4) from filler housing (5) and filler spout (6).
3. Remove six screws (11) and washers (10) from fuel filler housing (5) and right outer wheelhouse panel (8).
4. Push filler cap (2) through filler housing (5) and remove filler housing (5).
5. Inspect six speednuts (9) for presence or damage. Replace if defective or missing.



10-2. FUEL FILLER HOUSING MAINTENANCE (Cont'd)

b. Inspection

Refer to para. 10-56 for plusnut (11) inspection and replacement.

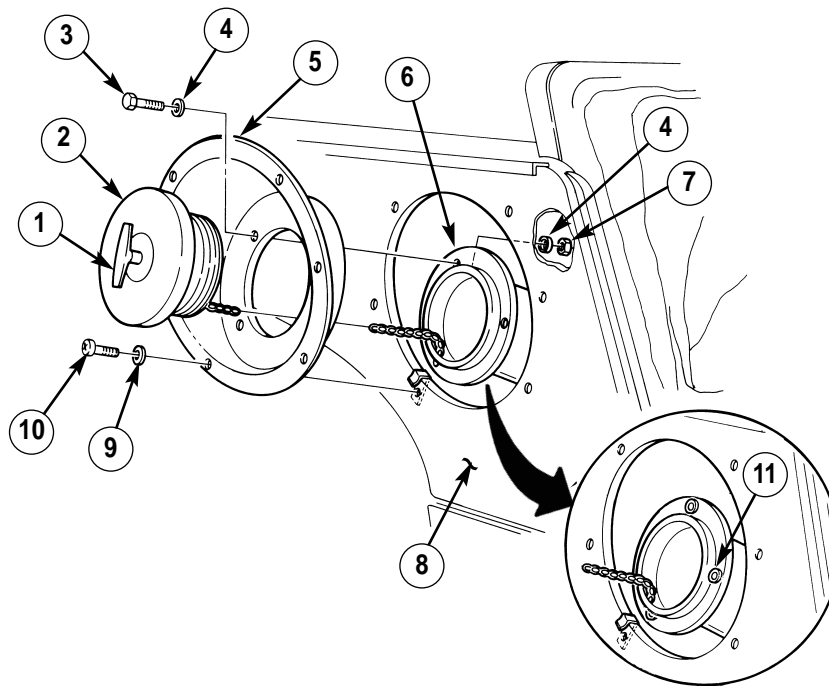
c. Installation

1. Pull filler cap (2) through filler housing (5) on right outer wheelhouse panel (8).
2. Install filler housing (5) on right outer wheelhouse panel (8) with six washers (9) and screws (10). Tighten screws (10) to 20 lb-in. (2 N·m).

NOTE

M1114 vehicles are equipped with plusnuts instead of nuts and washers. Apply sealing compound on threads for M1114 vehicles only.

3. Install filler housing (5) on filler spout (6) with three washers (4), capscrews (3), washers (4), and nuts (7). For M1114 only, tighten capscrews (3) to 75 lb-in. (9 N·m).
4. Install filler cap (2) on filler spout (6) with T-handle (1).



M1114

FOLLOW-ON TASK: Close fuel door (M1114 only) (TM 9-2320-387-10).