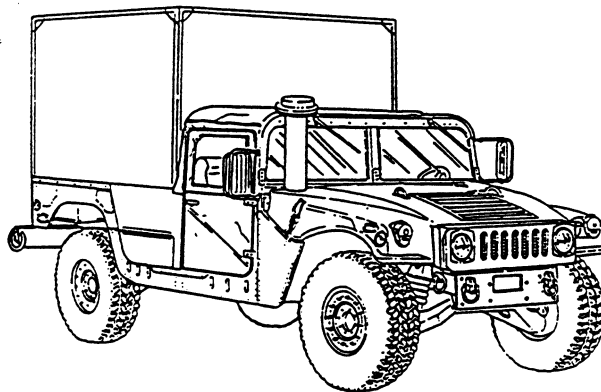


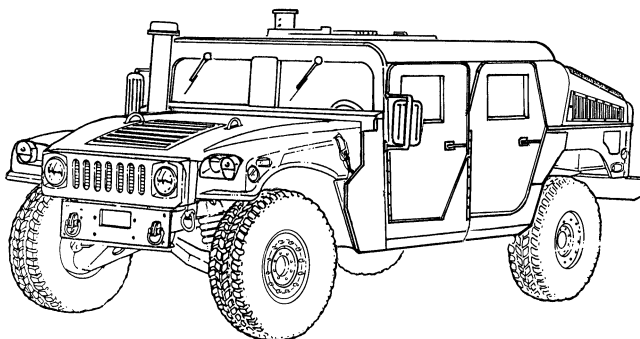
TECHNICAL MANUAL
UNIT, DIRECT SUPPORT, AND
GENERAL SUPPORT MAINTENANCE
REPAIR PARTS AND SPECIAL TOOLS LIST

FOR

TRUCK, UTILITY: S250 SHELTER
CARRIER, 4X4, M1113
(2320-01-412-0143) (EIC: B6B)



TRUCK, UTILITY: UP-ARMORED
CARRIER, 4X4, M1114
(2320-01-413-3739) (EIC: B6C)



Approved for public release; distribution is unlimited.

HEADQUARTERS, DEPARTMENTS OF THE ARMY
AND THE AIR FORCE

MARCH 2002

TECHNICAL MANUAL
NO. 9-2320-387-24P

HEADQUARTERS
DEPARTMENTS OF THE ARMY,
AND THE AIR FORCE
WASHINGTON, D.C. 31 March 2002

TECHNICAL ORDER
NO. 36A12-1A-3064

TECHNICAL MANUAL

UNIT, DIRECT SUPPORT, AND GENERAL SUPPORT MAINTENANCE REPAIR PARTS AND SPECIAL TOOLS LIST FOR

TRUCK, UTILITY: S250 SHELTER CARRIER,
4X4, M1113
(2320-01-412-0143) (EIC: B6B);

TRUCK, UTILITY: UP-ARMORED CARRIER,
4X4, M1114
(2320-01-413-3739) (EIC: B6C).

Current as of 27 November 2001

REPORTING ERRORS AND RECOMMENDING IMPROVEMENTS

You can help improve this publication. If you find any mistakes or if you know of a way to improve the procedures, please let us know. Submit your DA Form 2028 (Recommended Changes to Equipment Technical Publications), through the Internet, on the Army Electronic Product Support (AEPS) website. The Internet address is <http://aeprs.ria.army.mil>. If you need a password, scroll down and click on "ACCESS REQUEST FORM." The DA Form 2028 is located in the ONLINE FORMS PROCESSING section of the AEPS. Fill out the form and click on SUBMIT. Using this form on the AEPS will enable us to respond quicker to your comments and better manage the DA Form 2028 program. You may also mail, fax or email your letter or DA Form 2028 direct to: AMSTA-LC-CI Tech Pubs, TACOM-RI, 1 Rock Island Arsenal, Rock Island, IL 61299-7630. The email address is TACOM-TECH-PUBS@ria.army.mil. The fax number is DSN 793-0726 or Commercial (309) 782-0726.

Approved for public release; distribution is unlimited.

* This manual supersedes TM 9-2320-387-24P, dated 1 September 1998.

TABLE OF CONTENTS

		<u>WP Sequence No.</u>
	INTRODUCTION	0001 00
GROUP 01	ENGINE	
	0100 Engine and container assembly	0002 00
	0100 Engine mounting brackets	0003 00
	0101 Engine block assembly and cylinder head	0004 00
	0102 Crankshaft, damper, bearings, and pulley	0005 00
	0103 Flywheel	0006 00
	0104 Piston assembly, rod assembly, and ring set	0007 00
	0105 Valves, guides, and rocker arm assemblies	0008 00
	0105 Camshaft, timing chain, and related parts	0009 00
	0105 Crankcase cover assembly and rocker cover	0010 00
	0106 Engine oil dipstick and tube assembly	0011 00
	0106 Engine oil pan, pump, and filler tube	0012 00
	0106 Engine, power steering, and transmission oil cooler lines	0013 00
	0106 Oil filter, adapter, and oil line fittings	0014 00
	0106 Crankcase depression regulator valve and mounting hardware	0015 00
	0108 Air intake manifolds	0016 00
	0108 Exhaust manifolds	0017 00
	0108 Exhaust manifold heat shields	0018 00
GROUP 03	FUEL SYSTEM	
	0301 Fuel injector nozzle and gasket	0019 00
	0302 Fuel pump and mounting hardware	0020 00
	0302 Fuel injection pump and fuel filter lines	0021 00
	0302 Fuel injection supply and return lines	0022 00
	0302 Fuel injection pump cover assembly, governor linkage, and related parts	0023 00
	0302 Fuel injection pump throttle shaft, regulator, transfer pump, and related parts	0024 00
	0302 Fuel injection pump housing, head and rotor, drive shaft, and related parts	0025 00
	0304 Air cleaner, air horn, and related parts	0026 00
	0305 Turbocharger assembly	0027 00
	0306 Fuel tank supply and return lines	0028 00
	0306 Fuel tank assembly and mounting straps	0029 00
	0306 Fuel filler pipe assembly and vent lines	0030 00
	0306 Fuel tank vent line, filter, and mounting hardware	0031 00
	0309 Fuel filter assembly/water separator and mounting hardware	0032 00
	0311 Glow plug	0033 00
	0312 Accelerator controls and hand throttle	0034 00
	0312 Accelerator cable bracket and idle spring	0035 00
GROUP 04	EXHAUST SYSTEM	
	0401 Muffler, exhaust pipes, and related parts	0036 00
GROUP 05	COOLING SYSTEM	
	0501 Radiator and mounting hardware	0037 00
	0501 Surge tank and related parts	0038 00
	0502 Radiator shroud and related parts	0039 00
	0503 Thermostat, water crossover, and attaching hardware	0040 00
	0503 Radiator hoses and related parts	0041 00
	0504 Water pump and attaching hardware	0042 00
	0505 Tensioner, idler pulley, and mounting hardware	0043 00
	0505 Fan assembly and serpentine belt	0044 00
	0505 Fan drive	0045 00

TABLE OF CONTENTS (Cont'd)

	<u>WP Sequence No.</u>
GROUP 06	ELECTRICAL SYSTEM
0601	200 AMP alternator (Niehoff) mounting hardware 0046 00
0601	200 AMP alternator (Niehoff) and related parts 0047 00
0601	200 AMP alternator assembly 0048 00
0601	Starter motor 0049 00
0603	Starter motor cable assemblies and mounting hardware 0050 00
0603	Starter motor assembly 0051 00
0607	Instrument panel assembly and mounting hardware 0052 00
0607	Instrument cluster assembly 0053 00
0607	Circuit breakers 0054 00
0608	Directional control unit, protective control box, and directional flasher 0055 00
0608	Stoplight/torque converter clutch brake switch, time delay module, and high beam selector switch 0056 00
0608	Transmission control module, circuit breaker, and relay 0057 00
0609	Front composite light and mounting hardware 0058 00
0609	Rear composite light and mounting hardware 0059 00
0609	Headlight assembly 0060 00
0609	Blackout lamp assembly 0061 00
0609	Clearance marker light assembly 0062 00
0610	Sending units 0063 00
0610	STE/ICE Frequency, converter module, fan cut-off switch, throttle position sensor, and speed sensor 0064 00
0610	Fuel pressure transducer, fuel level transmitter, parking brake, backup light switches, and transfer indicator switch 0065 00
0611	Horn and horn button assembly 0066 00
0612	Batteries, cables, and related parts 0067 00
0612	Buss bar and mounting hardware 0068 00
0612	Battery mounting components and related parts 0069 00
0612	Slave receptacle and cable assemblies 0070 00
0612	200 AMP umbilical power cable 0071 00
0613	Engine wiring harness 0072 00
0613	Engine wiring harness installation hardware 0073 00
0613	STE/ICE wiring harness 0074 00
0613	STE/ICE wiring harness mounting hardware 0075 00
0613	Hood wiring harness 0076 00
0613	Body wiring harness-partial view 0077 00
0613	Body wiring harness-partial view 0078 00
0613	Body wiring harness-partial view 0079 00
0613	Body wiring harness installation hardware-partial view 0080 00
0613	Body wiring harness installation hardware-partial view 0081 00
0613	Body wiring harness installation hardware-partial view 0082 00
0613	Transmission wiring harness 0083 00
GROUP 07	TRANSMISSION
0705	Transmission and transfer control assembly 0084 00
0705	Transmission shift control and neutral start switch 0085 00
0705	Transmission shift lever, shift bracket, and rod 0086 00
0708	Torque converter 0087 00
0710	Transmission mounting hardware, fluid dipstick, and tube assembly 0088 00
0710	Transmission assembly 0089 00
0710	Parking lock system 0090 00
0710	Planetary gear carrier 0091 00
0713	Direct clutch assembly 0092 00
0713	Forward clutch 0093 00
0713	Intermediate clutch and center support assembly 0094 00

TABLE OF CONTENTS (Cont'd)

	<u>WP Sequence No.</u>
0713	Overrun, overdrive, and fourth clutch assembly 0095 00
0714	Front servo, rear servo, and governor assembly 0096 00
0714	Control valve and related parts 0097 00
0714	Control valve, accumulator, and related parts 0098 00
0721	Transmission oil pump 0099 00
0721	Transmission vent lines and attaching hardware 0100 00
0721	Transmission/transfer cooling lines 0101 00
GROUP 08	TRANSFER
0801	Transfer assembly 0102 00
0801	Transfer case assembly (front half) 0103 00
0801	Transfer case assembly (rear half) 0104 00
0801	Transfer oil cooler assembly 0105 00
0801	Transfer shift mechanisms 0106 00
0803	Transfer shift control lever 0107 00
0804	Transfer case vent line and related parts 0108 00
GROUP 09	PROPELLER SHAFTS
0900	Front propeller shaft assemblies 0109 00
0900	Rear propeller shaft assemblies 0110 00
GROUP 10	FRONT AXLE
1000	Front halfshaft assembly, left and right side 0111 00
1002	Front axle differential, mounting bracket, and hardware 0112 00
1002	Front axle differential and geared hub vent lines 0113 00
1004	Front knuckle and geared hub assembly 0114 00
1004	Front control arms, ball joints, and mounting hardware 0115 00
GROUP 11	REAR AXLE
1100	Rear halfshaft assembly, left and right side 0116 00
1102	Rear axle differential, mounting brackets, and hardware 0117 00
1102	Axle differential 0118 00
1102	Rear axle differential and geared hub vent lines 0119 00
1104	Rear knuckle and geared hub assembly 0120 00
1104	Rear control arms, ball joints, and mounting hardware 0121 00
GROUP 12	BRAKES
1201	Parking brake hand lever 0122 00
1201	Parking brake rod 0123 00
1201	Parking brake cables and mounting hardware 0124 00
1201	Rear parking brake and rear caliper assembly 0125 00
1202	Front service brake caliper assembly and rotor 0126 00
1204	Front service brake lines and proportioning valve 0127 00
1204	Rear brake lines and fittings 0128 00
1204	Master cylinder assembly 0129 00
1205	Hydro-boost 0130 00
1206	Service brake pedal assembly 0131 00
GROUP 13	WHEELS
1311	Wheel and runflat assembly 0132 00
1313	Tires 0133 00
GROUP 14	STEERING
1401	Steering column, wheel, and intermediate shaft 0134 00
1401	Steering linkage 0135 00
1407	Power steering gear and mounting hardware 0136 00
1407	Power steering gear assembly 0137 00

TABLE OF CONTENTS (Cont'd)

		<u>WP Sequence No.</u>
	1410 Power steering pump, pulley, and mounting hardware	0138 00
	1410 Power steering pump assembly	0139 00
	1411 Power steering and hydro-boost hydraulic lines and fittings	0140 00
	1411 Power steering oil cooler, hydro-boost, and fan clutch hydraulic lines and fittings	0141 00
GROUP 15	FRAME AND TOWING ATTACHMENTS	
	1501 Frame assembly, body mount brackets, and transmission crossmember	0142 00
	1501 Air lift brackets, front upper control arm brackets, front spring seats, crossbrace, and mounting hardware	0143 00
	1501 Front suspension crossmembers, related parts, and mounting hardware	0144 00
	1501 Rear suspension crossmembers, related parts, and mounting hardware	0145 00
	1501 Rear upper control arm brackets, spring seats, related parts, and mounting hardware	0146 00
	1501 Brake protection guard (front)	0147 00
	1501 Brake protection guard (rear)	0148 00
	1501 Front bumper and lifting shackle	0149 00
	1501 Rear bumper and lifting shackle	0150 00
	1503 Towing pintle assembly	0151 00
GROUP 16	SPRINGS AND SHOCK ABSORBERS	
	1601 Springs, front and rear	0152 00
	1604 Shock absorbers, front and rear	0153 00
	1605 Stabilizer bar and connecting links	0154 00
	1605 Rear radius rods	0155 00
GROUP 18	BODY AND HOOD	
	1801 Body mounting components	0156 00
	1801 Body assembly components, left hand	0157 00
	1801 Body assembly and related parts	0158 00
	1801 Body assembly components, right hand	0159 00
	1801 Body insulation and cowl assemblies	0160 00
	1801 Hood assembly and mounting hardware	0161 00
	1801 Hood assembly grille and related parts	0162 00
	1801 Grille frame mounting assembly	0163 00
	1801 Left hand splash shield, radiator side armor, and hood prop rod	0164 00
	1801 Right hand splash shield	0165 00
	1801 Engine access cover assembly, A-pillar insulation, and steering wheel lock	0166 00
	1801 Rear fixed doors, access door panel, and mounting hardware	0167 00
	1801 Door assembly	0168 00
	1801 Latching mechanism, locking pawl, and related parts	0169 00
	1801 Door handle and related parts	0170 00
	1801 Door subassembly, window, and related parts	0171 00
	1801 Fuel door, fuel armor latch, door latch, and mounting hardware	0172 00
	1801 C-Pillar lower armor and mounting hardware	0173 00
	1801 Driver side footwell armor and related parts	0174 00
	1801 Driver side inner armor and mounting hardware	0175 00
	1801 Passenger side inner kick panel and mounting hardware	0176 00
	1801 Passenger side footwell armor and related parts	0177 00
	1801 Passenger side upper cowl assembly and mounting hardware	0178 00
	1801 Roof shims, footman loops, and mounting hardware	0179 00
	1801 B-Pillar armor and mounting hardware	0180 00

TABLE OF CONTENTS (Cont'd)

	<u>WP Sequence No.</u>
1801 C-Pillar armor and related parts	0181 00
1801 Rear partition and related parts	0182 00
1801 Rear partition assembly	0183 00
1801 Rear partition mounting hardware	0184 00
1801 Firewall armor and mounting hardware	0185 00
1801 Firewall armor, side mirror bracket, and related parts	0186 00
1801 Windshield deflector subassemblies and related parts	0187 00
1801 Windshield support bracket and mounting hardware	0188 00
1801 Passenger side rocker panel armor and mounting hardware	0189 00
1801 Driver side rocker panel armor and mounting hardware	0190 00
1801 Passenger side A-Pillar armor and mounting hardware	0191 00
1801 Driver side A-Pillar armor and mounting hardware	0192 00
1801 Rear driver side underbody protection	0193 00
1801 Rear passenger side underbody protection	0194 00
1801 Front passenger side underbody protection	0195 00
1801 Front driver side underbody protection	0196 00
1801 Turret hatch door and related parts	0197 00
1801 Pintle mount and turret hatch hardware	0198 00
1801 Turret assembly-night vision mount	0199 00
1801 Turret hatch latches, brake assembly, and related parts	0200 00
1801 Turret frame, gunner's sling, and related parts	0201 00
1801 Gunner's platform and traversing unit stowage	0202 00
1801 Roof and mounting components	0203 00
1801 Interior net assemblies, cargo bulkhead, and related items	0204 00
1801 Cargo shell door, insulation, intermediate pillar, gas spring, and related components	0205 00
1801 Cargo shell door assembly	0206 00
1801 Cargo shell mounting components	0207 00
1801 Cargo shell assemblies	0208 00
1801 Tailgate assembly and related parts	0209 00
1801 Tailgate armor - M1114	0210 00
1802 Windshield assembly	0211 00
1802 Windshield assembly	0212 00
1802 Windshield assembly, folddown	0213 00
1805 Interior tunnel, cowl, floor insulation, and mounting components (foam)	0214 00
1805 Underbody insulation	0215 00
1806 Driver's seat and related parts	0216 00
1806 Commander's seat and related parts	0217 00
1806 Rear seat, mounting hardware, and related parts	0218 00
1806 Protective padding on B-Pillar cover	0219 00
1806 Gunmount brackets and related parts - M1114	0220 00
1806 Front seat belts, brackets, and mounting hardware	0221 00
1806 Rear seatbelts, brackets, and mounting hardware - M1114	0222 00
1808 3-1/2 ton jack stowage straps and mounting hardware	0223 00
1808 Ammunition and water can stowage trays and mounting hardware	0224 00
1808 Max tool set straps, flare, warning triangle, first aid kit, and mounting hardware	0225 00
1808 Fire extinguisher mounting brackets	0226 00
GROUP 22 BODY AND CHASSIS ACCESSORY ITEMS	
2201 Two-man crew soft top enclosure, top assembly, rear curtain, and door assemblies	0227 00
2201 Two-man crew soft top enclosure, bow, and mounting components	0228 00

TABLE OF CONTENTS (Cont'd)

	<u>WP Sequence No.</u>
2202 Windshield wiper motor, wiper assembly, and related parts	0229 00
2202 Windshield de-icer and related parts	0230 00
2202 Split rearview mirror and mounting hardware	0231 00
2202 Reflectors	0232 00
2202 Diverter assembly, defroster, and heater ducting	0233 00
2202 Heater assembly, water valve, and controls	0234 00
2202 Sun visor assembly and mounting hardware	0235 00
2202 Radio rack assembly and mounting hardware	0236 00
2202 Radio cable, main power – M1114	0237 00
2202 Communications radio cables and related parts – M1113	0238 00
2210 Data plates, dash panel	0239 00
2210 Data plates, weight, and slave receptacle	0240 00
2210 Data plates, surge tank, fan shroud, and cook stove	0241 00
2210 Data plates, fuel pump	0242 00
2210 Data plate, commander's seat	0243 00
2210 Data plates, generator, transfer case, and engine container	0244 00
2210 Data plates, winch	0245 00
2210 Data plates, rear hatch	0246 00
GROUP 33 SPECIAL PURPOSE KITS	
3301 Engine shipping container assembly	0247 00
3303 Arctic kit, two-man crew, bow and mounting components	0248 00
3303 Arctic kit, two-man crew, curtain fasteners	0249 00
3303 Arctic kit, two-man crew, top curtain, rear curtain, and door assemblies	0250 00
3305 Deep water fording kit, intake and exhaust systems	0251 00
3305 Deep water fording kit, selector valve, sensor cup, and vent lines	0252 00
3305 Deep water fording kit, hydro-boost vent line, engine and transmission dipstick, and tube assemblies	0253 00
3307 Front winch mounting brackets and related parts	0254 00
3307 Front winch clutch control	0255 00
3307 Front winch assembly and related parts	0256 00
3307 Rear winch assembly, mounting hardware, and related parts	0257 00
3307 Rear winch clutch control	0258 00
3307 Rear winch vent system – M1114	0259 00
3307 Winch control	0260 00
3307 Winch assembly, front and rear	0261 00
3307 Kit, S250 shelter mounting components	0262 00
3307 Kit, S250 shelter tailgate mounting components	0263 00
3307 Pintle extension kit, electrical connector bracket, and miscellaneous hardware	0264 00
3307 Precision Lightweight Global Positioning System Receiver (PLGR)	0265 00
3307 Kit, brushguard	0266 00
3307 Kit, rear hatch support	0267 00
GROUP 47 GAGES, WEIGHING, AND MEASURING DEVICES	
4701 Speedometer, speedometer drive, and related parts	0268 00
4702 Air restriction indicator assembly	0269 00
GROUP 52 REFRIGERATION, AIR CONDITIONER/HEATER, AND AIR CONDITIONING COMPONENTS	
5203 A/C insulation, front door, left and right sides	0270 00
5203 A/C insulation, rear door, left and right sides	0271 00
5203 A/C insulation, turret	0272 00
5203 A/C insulation, roof	0273 00

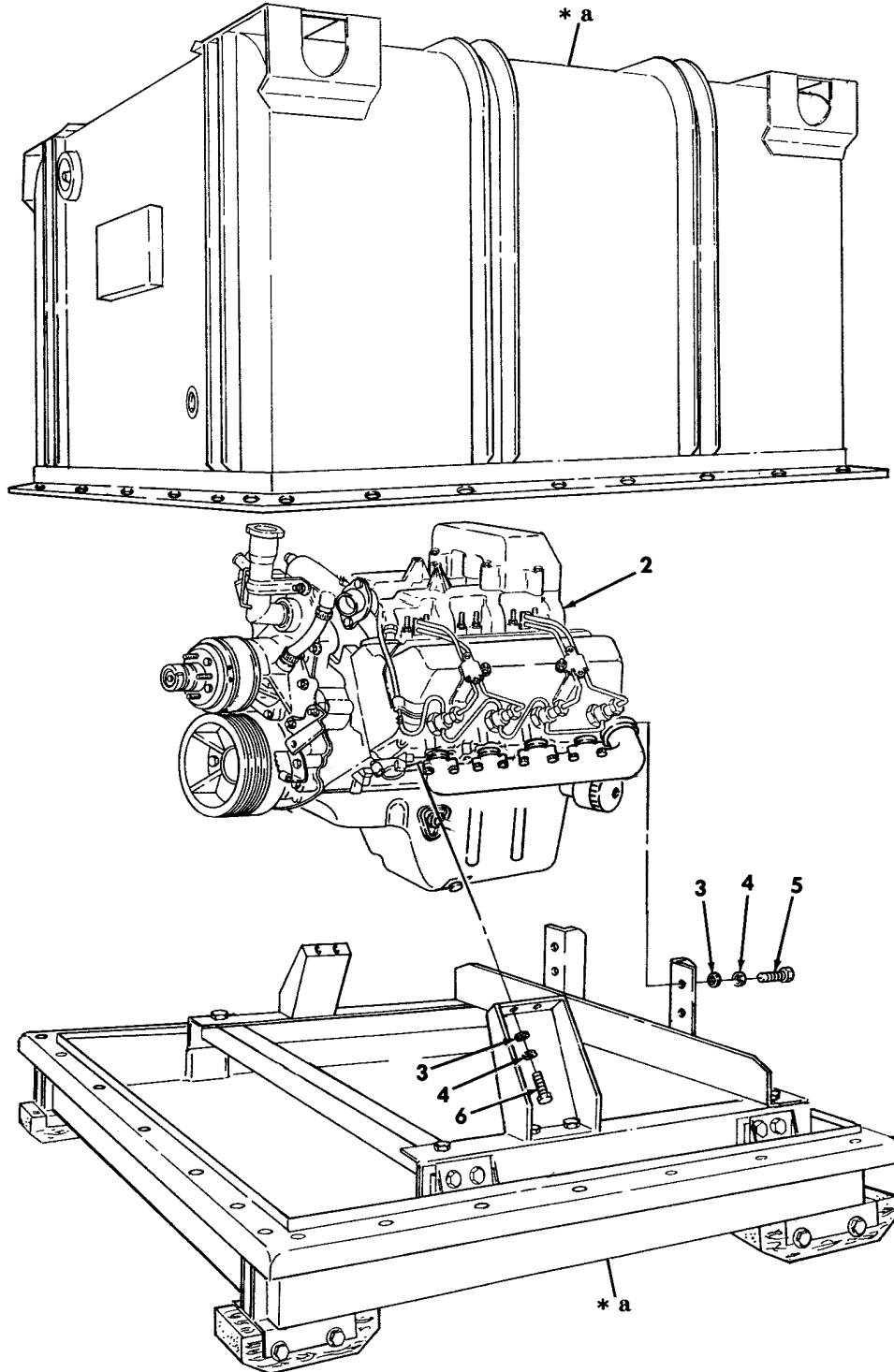
TABLE OF CONTENTS (Cont'd)

	<u>WP Sequence No.</u>
5203 A/C compressor, idler pulley, tensioner, and mounting hardware	0274 00
5203 Dryer assembly, trinary switch, and related parts	0275 00
5217 A/C toggle switch, harness, and air distribution duct assembly	0276 00
5217 High and low pressure A/C lines	0277 00
5217 Rear condenser lines, jumper harness, and related parts	0278 00
5217 Condenser fan exhaust and supply vent	0279 00
5217 Condenser fan access panel	0280 00
5217 Rear A/C dryer and condenser lines	0281 00
5217 Rear A/C condenser fan and shroud	0282 00
5217 Rear A/C condenser and tray assembly	0283 00
5241 A/C wiring harness, relays, circuit breaker, A/C control module, and related parts	0284 00
5241 Front evaporator/heater assembly mounting and related parts	0285 00
5241 Front evaporator expansion valve	0286 00
5241 Front evaporator/heater, case, and related parts	0287 00
5241 Rear A/C air distribution duct and register	0288 00
5241 Rear A/C evaporator assembly	0289 00
GROUP 94 REPAIR PARTS KITS	
9401 Kits	0290 00
GROUP 95 BULK ITEMS	
9501 Bulk	0291 00
GROUP 26 TOOLS AND TEST EQUIPMENT	
2604 Special tools	0292 00
2604 Special tools	0293 00
2604 Special tools	0294 00
2604 Special tools	0295 00
2604 Special tools, drive belts and transmission	0296 00
2604 Special tools, transmission	0297 00
2604 Special tools, transfer case	0298 00
2604 Special tools, axle differential	0299 00
2604 Special tools, geared hub and steering	0300 00
2604 Special tools, steering pump, body, and speedometer drive	0301 00
2604 Special tools, multipurpose	0302 00
2604 Special tools, transmission and engine	0303 00
2604 Special tools, transmission and engine	0304 00
2604 Special tools, pinion setting kit	0305 00
CROSS-REFERENCE INDEXES	
National Stock Number Index	0306 00
Part Number Index	0307 00

UNIT, DIRECT SUPPORT, AND GENERAL SUPPORT MAINTENANCE
REPAIR PARTS AND SPECIAL TOOLS LIST

TRUCK, UTILITY: S250 SHELTER CARRIER, 4X4, M1113 (2320-01-412-0143),
TRUCK, UTILITY: UP-ARMORED CARRIER, 4X4, M1114 (2320-01-413-3739)

1 —
2
thru
6



* a PART OF ITEM 1

Figure 1. Engine and Container Assembly.

(1) ITEM NO	(2) SMR CODE	(3) NSN	(4) CAGEC	(5) PART NUMBER	(6) DESCRIPTION AND USABLE ON CODES(UOC)	(7) QTY
GROUP 01 ENGINE						
0100 ENGINE ASSEMBLY						
FIG. 1 ENGINE AND CONTAINER ASSEMBLY						
1	PAFHH	2815014204180	19207	57K3241	ENGINE WITH CONTAIN 6.5 LITER TURBO,1996.....	1
1	PAFHH	2815014398164	19207	57K3526	ENGINE,WITH CONTAIN 6.5 LITER TURBO,1997.....	1
1	PAFHH	2815014537402	19207	57K3538	ENGINE WITH CONTAIN 6.5 LITER TURBO,1998.....	1
1	PAFHH		19207	57K3544	ENGINE WITH CONTAIN 6.5 LITER TURBO,1999.....	1
1	PAFHH	2815014398164	19207	57K3557	ENGINE,WITH CONTAIN 6.5 LITER TURBO,2000.....	1
2	XAFHH		34623	RCSK18263	.ENGINE,DIESEL 6.5 LITER TURBO,1996	1
2	XAFHH		19207	12460477	.ENGINE,DIESEL 6.5 LITER TURBO,1997	1
2	XAFHH		19207	12469051	.ENGINE,DIESEL 6.5 LITER TURBO,1998	1
2	XAFHH		19207	12469089	.ENGINE,DIESEL 6.5 LITER TURBO,1999	1
2	XAFHH		19207	12469163	.ENGINE,DIESEL 6.5 LITER TURBO,2000	1
3	PAFZZ	5310008094061	96906	MS27183-15	.WASHER,FLAT 7/16.....	8
4	PAFZZ	5310006379541	96906	MS35338-46	.WASHER,LOCK 3/8.....	8
5	PAFZZ	5305007813926	80204	B1821BH038C275N	.SCREW,CAP,HEXAGON H 3/8-16 X 2.750	4
6	PAFZZ	5305005432419	80204	B1821BH038C113N	.SCREW,CAP,HEXAGON H 3/8-16 X 1.125	4

END OF FIGURE

UNIT, DIRECT SUPPORT, AND GENERAL SUPPORT MAINTENANCE
REPAIR PARTS AND SPECIAL TOOLS LIST

TRUCK, UTILITY: S250 SHELTER CARRIER, 4X4, M1113 (2320-01-412-0143),
TRUCK, UTILITY: UP-ARMORED CARRIER, 4X4, M1114 (2320-01-413-3739)

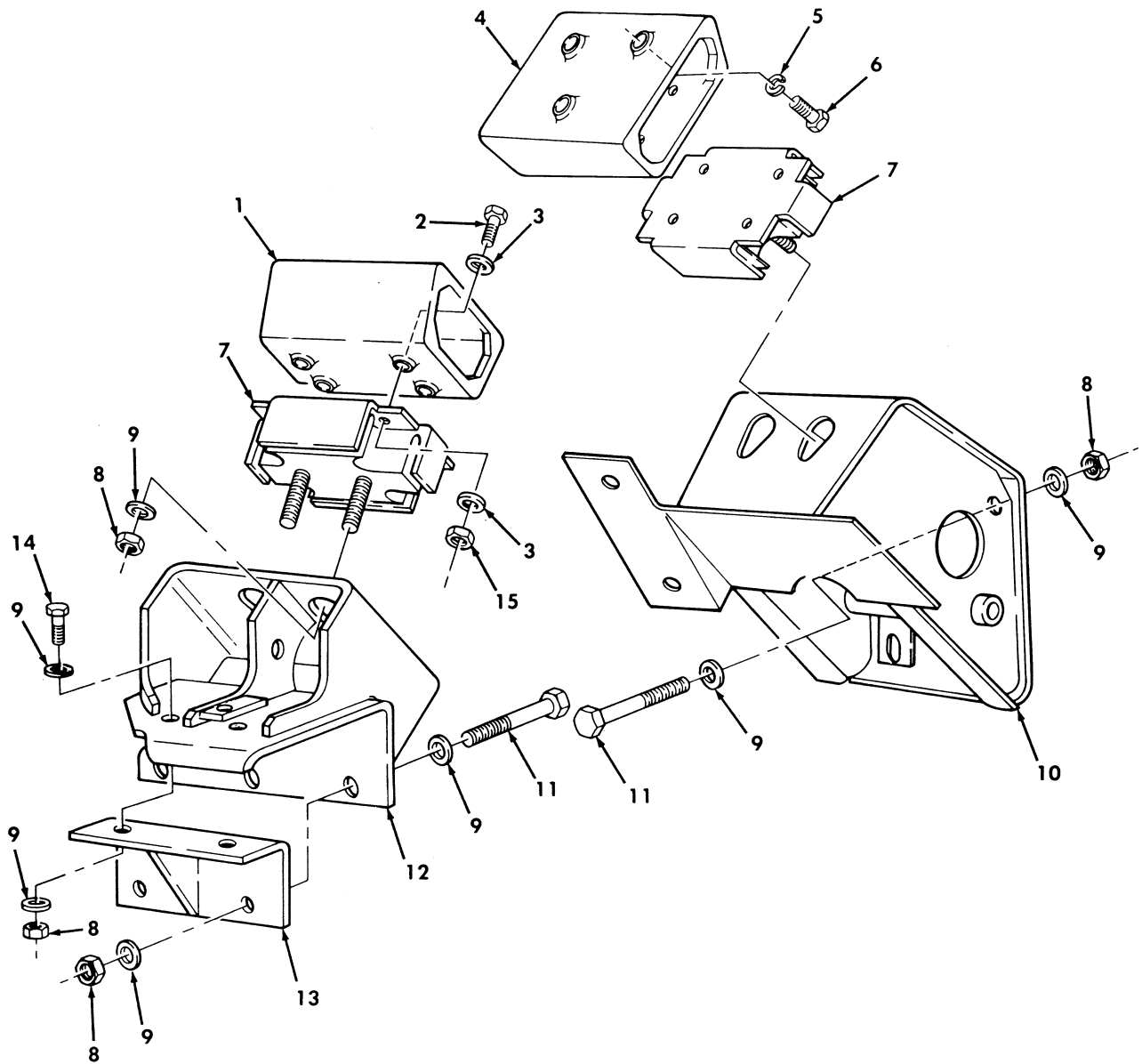


Figure 2. Engine Mounting Brackets.

(1) ITEM NO	(2) SMR CODE	(3) NSN	(4) CAGEC	(5) PART NUMBER	(6) DESCRIPTION AND USABLE ON CODES(UC)	(7) QTY
GROUP 0100 ENGINE ASSEMBLY						
FIG. 2 ENGINE MOUNTING BRACKETS						
1	PAFZZ	2510011856115	19207	12339133	BRACKET,MOUNT,RESIL R.H.....	1
2	PAFZZ	5305000680511	80204	B1821BH038C125N	SCREW,CAP,HEXAGON H 3/8-16 X 1.25..	8
3	PAFZZ	5310000806004	96906	MS27183-14	WASHER,FLAT 3/8.....	16
4	PAFZZ	2510011856112	19207	12339132	BRACKET,ENGINE MOUN L.H.....	1
5	PAFZZ	5310006379541	96906	MS35338-46	WASHER,LOCK 3/8,1996 THRU 1998.....	6
5	PAFZZ	5310012067306	7X677	11500207	WASHER,LOCK 1999,2000.....	6
6	PAFZZ	5305000680510	80204	B1821BH038C100N	SCREW,CAP,HEXAGON H 3/8-16 X 1.00..	6
					1996 THRU 1998.....	6
6	PAFZZ	5305013803395	80204	B18231B10025NF	SCREW,CAP,HEXAGON H 1999,2000.....	6
7	PAFZZ	5342011899982	34623	5568310	MOUNT,RESILIENT.....	2
8	PAFZZ	5310004883889	96906	MS51943-39	NUT,SELF-LOCKING,HE 1/2-13.....	13
9	PAFZZ	5310011211703	06032	2310-0143-001	WASHER,FLAT 1/2.....	22
10	PAFZZ	2510011856113	19207	12338205	BRACKET,ENGINE MOUN.....	1
11	PAFZZ	5305000712081	80204	B1821BH050C450N	SCREW,CAP,HEXAGON H 1/2-13 X 4.50..	7
12	PAFZZ	2510011856114	19207	12338183	BRACKET,ENGINE MOUN R.H.....	1
13	PAFZZ	5340011867173	19207	12338163	BRACKET,ANGLE R.H.....	1
14	PAFZZ	5305000712067	80204	B1821BH050C125N	SCREW,CAP,HEXAGON H 1/2-13 X 1.25..	2
15	PAFZZ	5310009359021	96906	MS51943-35	NUT,SELF-LOCKING,HE 3/8-16.....	8

END OF FIGURE

UNIT, DIRECT SUPPORT, AND GENERAL SUPPORT MAINTENANCE
REPAIR PARTS AND SPECIAL TOOLS LIST

TRUCK, UTILITY: S250 SHELTER CARRIER, 4X4, M1113 (2320-01-412-0143),
TRUCK, UTILITY: UP-ARMORED CARRIER, 4X4, M1114 (2320-01-413-3739)

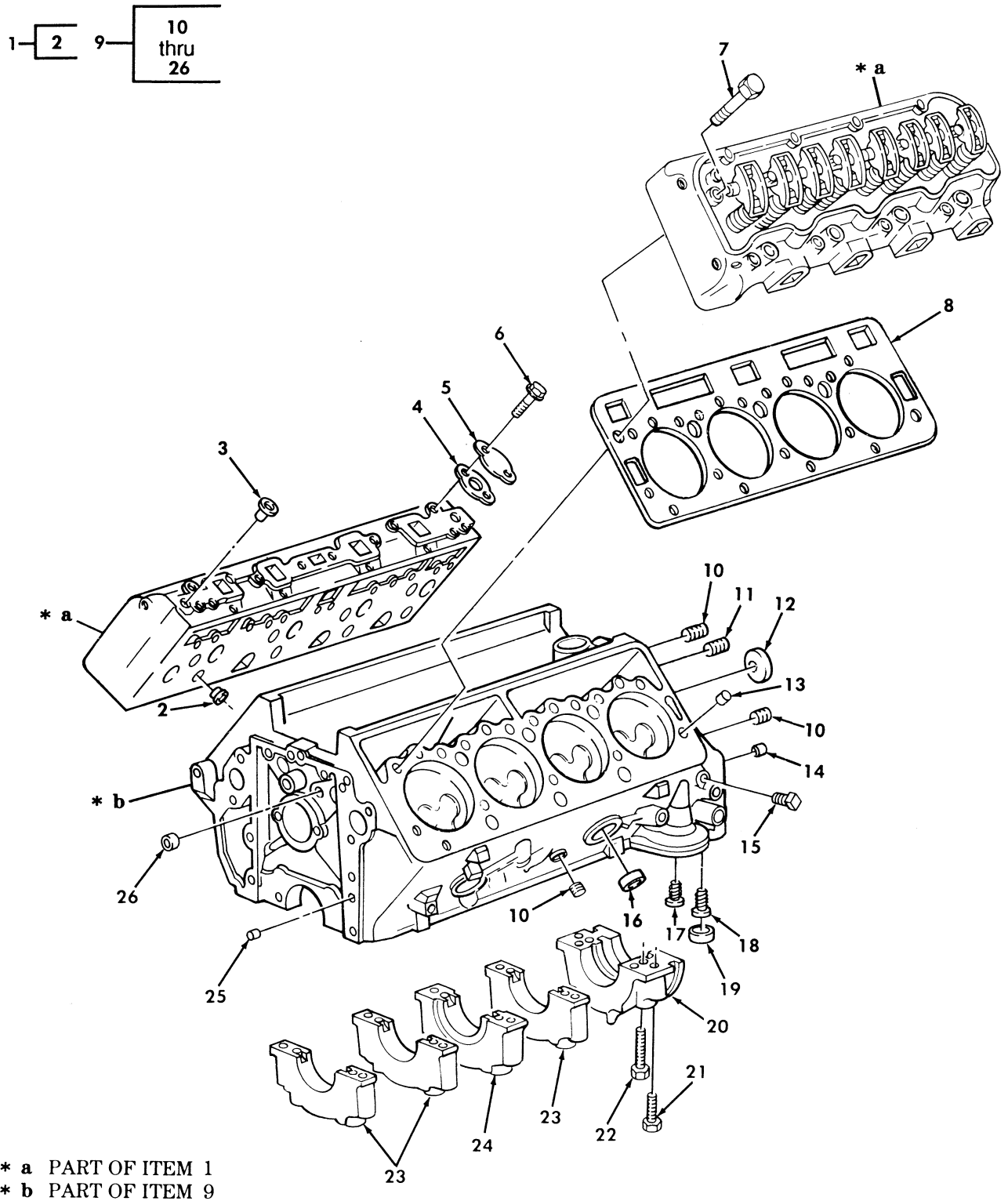


Figure 3. Engine and Container Assembly.

(1) ITEM NO	(2) SMR CODE	(3) NSN	(4) CAGEC	(5) PART NUMBER	(6) DESCRIPTION AND USABLE ON CODES(UOC)	(7) QTY
GROUP 0101 CRANKCASE, BLOCK, CYLINDER HEAD						
FIG. 3 ENGINE BLOCK ASSEMBLY AND CYLINDER HEAD						
1	PAFHH	2815014351707	7X677	12556822	CYLINDER HEAD,DIESE.....	2
2	PAHZZ	2815014371016	7X677	10149629	.CHAMBER,PRECOMBUSTI 1996.....	8
2	PAHZZ	2815014371017	7X677	10230567	.CHAMBER,PRECOMBUSTI OVERSIZED,1996	8
2	PAHZZ	2835014692648	24617	10183926	.CASE,COMBUSTION CHA 1997,1998, 1999,2000.....	8
2	PAHZZ	2835014692644	24617	12550985	.CASE,COMBUSTION CHA OVERSIZED, 1997,1998,1999,2000.....	8
3	PAFZZ	5340011665640	7X677	14025517	PLUG,EXPANSION.....	4
4	PAFZZ	5330011490874	7X677	10137488	GASKET.....	2
5	PAFZZ	5340011646436	7X677	14045274	COVER,ACCESS.....	2
6	PAFZZ	5305013976850	24617	11502685	SCREW,CAP,HEXAGON H #10-1.5 X 20.0 MM.....	4
7	PAFZZ	5306014108159	7X677	14077194	BOLT,MACHINE 6.5 LITER.....	34
8	PAFZZ	5330014422876	24617	12554979	GASKET PART OF KIT P/N 12532481.....	2
9	XAHHH		7X677	12553121	BLOCK ASSEMBLY 1996.....	1
9	XAHHH		11862	12555490	BLOCK ASSEMBLY 1997.....	1
9	XAHHH		7X677	12559372	BLOCK ASSEMBLY 1998.....	1
9	XAHHH		7X677	12561421	BLOCK ASSEMBLY 1999,2000.....	1
10	PAFZZ	4730014365769	7X677	12554844	.PLUG,PIPE,MAGNETIC OIL PASSAGE,1/ 4-18.....	5
11	PAFZZ	5365011544378	7X677	444782	.PLUG,MACHINE THREAD OIL GALLERY,3/ 8-18.....	1
12	PAHZZ	5340011497977	7X677	3999200	.PLUG,EXPANSION CAMSHAFT.....	1
13	PAFZZ	5365011623797	7X677	12558081	.SPACER,RING.....	4
14	PAFZZ		7X677	3736406	.PIN,STRAIGHT,HEADLE FLYWHEEL HOUSING.....	2
15	PAFZZ	4730001874202	81348	WW-P-471AASBCC	.PLUG,PIPE 3/8-18.....	1
16	PAFZZ	5340004496408	7X677	10000462	.CAP,PROTECTIVE,DUST.....	6
17	PAHZZ	4820014369135	7X677	25014006	.VALVE,SAFETY RELIEF FILTER BY-PASS	1
18	PAHZZ	4820014407461	7X677	25161285	.VALVE,REGULATING,FL OIL COOLER BY- PASS.....	1
19	PAHZZ	2815011660621	7X677	14066310	.PLUG,PISTON PIN OIL COOLER BY-PASS	1
20	XAHZZ		7X677	10183978	.CAP,PILLOW BLOCK CRANKSHAFT BEARING NO.5.....	1
21	PAHZZ	5306011499668	7X677	14077192	.BOLT,SHOULDER OUTBOARD,12-1.75 X 68MM.....	10
22	PAHZZ	5306014382320	7X677	23502575	.BOLT,MACHINE INBOARD,#12-1.75 X 101MM.....	10
23	XAHZZ		7X677	23502571	.CAP,PILLOW BLOCK CRANKSHAFT BEARING NOS.1,2,4.....	3
24	XAHZZ		7X677	14022663	.CAP,PILLOW BLOCK CRANKSHAFT BEARING NO.3.....	1
25	PAFZZ	5315011499712	7X677	14022670	.PIN,STRAIGHT,HEADLE.....	2
26	PAHZZ	5340011497976	96906	MS9176-13	.PLUG,EXPANSION.....	2

END OF FIGURE