

**ARMY TM 9-2320-365-24P**  
**AIR FORCE T.O. 36A12-1B-1095-24**

\*SUPERSEDES COPY DATED JUNE 1998

---

**UNIT, DIRECT SUPPORT, AND  
GENERAL SUPPORT MAINTENANCE  
REPAIR PARTS AND SPECIAL TOOLS LIST  
FOR  
M1078 SERIES, 2-1/2-TON, 4X4,  
LIGHT MEDIUM TACTICAL VEHICLE (LMTV)**

MODEL	NSN	EIC
TRK, CAR., LMTV, M1078		
W/WN	2320-01-360-1898	BHH
W/O WN	2320-01-354-3385	BHD
TRK, VAN, LMTV, M1079		
W/WN	2320-01-360-1891	BHG
W/O WN	2320-01-354-3384	BHE
TRK, CHAS, LMTV, M1080	2320-01-353-9098	BHC
TRK, CAR., LMTV, AIRDROP, M1081		
W/WN	2320-01-360-1899	BHJ
W/O WN	2320-01-355-3064	BHF

DISTRIBUTION STATEMENT A. Approved for public release; distribution is unlimited.

---

HEADQUARTERS, DEPARTMENTS OF THE ARMY AND THE AIR FORCE

**31 JULY 2001**

TECHNICAL MANUAL  
NO. 9-2320-365-24P

TECHNICAL ORDER  
NO. 36A12-1B-1095-24

UNIT, DIRECT SUPPORT, AND  
GENERAL SUPPORT MAINTENANCE  
REPAIR PARTS AND SPECIAL TOOLS LIST  
FOR

**M1078 SERIES, 2-1/2-TON, 4X4  
LIGHT MEDIUM TACTICAL VEHICLE (LMTV)**

MODEL	NSN	EIC
Trk, Car., LMTV, M1078 W/WN	2320-01-360-1898	BHH
W/O WN	2320-01-354-3385	BHD
TRK, VAN, LMTV, M1079 W/WN	2320-01-360-1891	BHG
W/O WN	2320-01-354-3384	BHE
Trk, Chas, LMTV, M1080	2320-01-353-9098	BHC
Trk, Car., LMTV, AIRDROP, M1081 W/WN	2320-01-360-1899	BHJ
W/O WN	2320-01-355-3064	BHF

**REPORTING ERRORS AND RECOMMENDING IMPROVEMENTS**

You can help improve this manual. If you find any mistakes or if you know a way to improve the procedures, please let us know. Submit your DA Form 2028 (Recommended Changes to Equipment Technical Publications, through the Internet, on the Army Electronic Product Support (AEPS) website. The internet address is <http://aeps.ria.army.mil>. If you need a password, scroll down and click on "ACCESS REQUEST FORM". The DA Form 2028 is located in the ONLINE FORMS PROCESSING section of the AEPS. Fill out the form and click on SUBMIT. Using this form on the AEPS will enable us to respond quicker to your comments and better manage the DA Form 2028 program. You may also mail, fax or Email your letter or DA Form 2028 direct to: AMSTA-LC-CI/TECH PUBS, TACOM-RI, 1 Rock Island Arsenal, Rock Island, IL 61299-7630. The email address is TACOM-TECH-PUBS @ria.army.mil. The fax number is DSN 793-0726 or Commercial (309) 782-0726.

**DISTRIBUTION STATEMENT A.** Approved for public release; distribution is unlimited.

\*This publication supercedes TM 9-2320-365-24p DATED 17 June 1998.

## TABLE OF CONTENTS

	Page	Illus./ Figure
Section I.	INTRODUCTION	
Section II.	REPAIR PARTS LIST	
Group 01	Engine	
	0100 Dressed Engine with Container.....	1-1 1
	0100 Engine Mounts.....	2-1 2
	0100 Engine Brackets.....	3-1 3
	0101 Cylinder Head with Valves and Gasket.....	4-1 4
	0101 Cylinder Block.....	5-1 5
	0102 Crankshaft.....	6-1 6
	0102 Pulley and Damper.....	7-1 7
	0103 Flywheel, Housing and Flex Plates.....	8-1 8
	0104 Piston and Push Rods.....	9-1 9
	0105 Idler Gear.....	10-1 10
	0105 Camshaft.....	11-1 11
	0105 Front and Side Housing Covers and Cam Followers.....	12-1 12
	0105 Valve Cover and Gasket.....	13-1 13
	0105 Rocker Arms.....	14-1 14
	0105 Push Rods, Valves, Valve Springs.....	15-1 15
	0106 Oil Cooler.....	16-1 16
	0106 Oil Pan and Oil Pump.....	17-1 17
	0106 Oil Hoses and Tubes.....	18-1 18
	0106 Engine Oil Sampling Valve.....	19-1 19
	0106 Engine Oil Filter and Filter Base.....	20-1 20
	0106 Engine Oil Dipstick and Filler Tube.....	21-1 21
	0106 Crankcase Breather.....	22-1 22
	0108 Inlet Manifold, Gasket and Cover.....	23-1 23
	0108 Exhaust Manifold.....	24-1 24
Group 03	Fuel System	
	0301 Fuel Injector.....	25-1 25
	0304 Air Cleaner.....	26-1 26
	0305 Turbocharger.....	27-1 27
	0305 Charge Air Cooler, Pipes, Brackets and Hoses.....	28-1 28
	0306 Fuel Regulating Valve, Tubes, Fittings and Hoses.....	29-1 29
	0306 Fuel Tank, Clamps and Brackets.....	30-1 30
	0308 Governor and Fuel Transfer.....	31-1 31
	0308 Fuel Control Linkage.....	32-1 32
	0309 Fuel Filter.....	33-1 33
	0309 Fuel/Water Separator.....	34-1 34
	0311 Ether Starting Aid.....	35-1 35
	0312 Accelerator, Hand Throttle and Linkage.....	36-1 36
Group 04	Exhaust System	
	0401 Exhaust Pipe Heat Shield.....	37-1 37
	0401 Exhaust Pipes, Brackets and Clamps.....	38-1 38
	0401 Muffler, Ejector, Clamps and Brackets.....	39-1 39
	0401 Muffler Heat Shield, Clamps and Resilient Mounts.....	40-1 40
Group 05	Cooling System	
	0501 Radiator, Overflow Tank, Hoses and Fittings.....	41-1 41

	Page	Illus./ Figure
Group 05		
Cooling System (continued)		
0502 Radiator Fan Shroud .....	42-1	42
0503 Thermostat and Cooling Tubes .....	43-1	43
0504 Water Pump and Drive.....	44-1	44
0505 Engine Fan and Clutch Assembly.....	45-1	45
Group 06		
Electrical System		
0601 100 AMP Alternator, Brackets and Belt.....	46-1	46
0603 100 AMP Voltage Regulator .....	47-1	47
0603 M0017703MD Starter and Solenoid .....	48-1	48
0603 M0017703ME Starter and Solenoid.....	49-1	49
0603 Auxiliary Starter Solenoid .....	50-1	50
0606 Fuel Shutoff Solenoid .....	51-1	51
0607 Instrument Panel.....	52-1	52
0607 Auxiliary Panel and Switches .....	53-1	53
0607 WTEC II Dashboard Cable Assembly and Power Distribution Panel .....	54-1	54
0607 WTEC III Dashboard Cable Assembly and Power Distribution Panel .....	55-1	55
0608 Turn Signal Control .....	56-1	56
0608 Flasher Unit.....	57-1	57
0608 Solenoid Valve Assembly .....	58-1	58
0608 CTIS Electronic Control Unit, ECU Dimmer Module, .....	59-1	59
and Frequency ECU		
0608 100A Reverse Polarity Relay and Starter Shunt.....	60-1	60
0609 Headlamp Assembly.....	61-1	61
0609 Composite Taillight Assembly .....	62-1	62
0609 Cab and Door Clearance and Marker Lights.....	63-1	63
0609 Chassis Clearance and Marker Lights .....	64-1	64
0609 Backup Light .....	65-1	65
0609 Blackout Drive Light .....	66-1	66
0609 Composite Front Light Assembly .....	67-1	67
0610 Sensors, Switches and Transducers.....	68-1	68
0610 Air Brakes Pneumatic Switch .....	69-1	69
0611 Horn.....	70-1	70
0612 Batteries, Box, Guard and Cables .....	71-1	71
0613 Engine Cable Routing Clamps and Insulators .....	72-1	72
0613 Engine Control Cable Assembly.....	73-1	73
0613 STE/ICE Cable Assembly.....	74-1	74
0613 12 Pin Intervehicle Cable.....	75-1	75
0613 Transmission Wiring Harness .....	76-1	76
0613 Transmission Harness .....	77-1	77
0613 WTEC III Transmission Wiring Harness .....	78-1	78
0613 Windshield Washer Pump/EMI Cable .....	79-1	79
0613 7 Pin Intervehicle Cable Assembly .....	80-1	80
0613 Cab Cable Routing Clamps and Brackets .....	81-1	81
0613 Warning Light Cable Assembly.....	82-1	82
0613 Door and Cab Marker Light Cable Assembly.....	83-1	83
0613 Air Drop Cab Clearance and Marker Lights Lower .....	84-1	84
Cable Assembly		
0613 Air Drop Cab Clearance and Marker Lights Upper.....	85-1	85
Cable Assembly		
0613 Winch Control Cable Assembly .....	86-1	86
0613 Rear Lights Cable Assembly.....	87-1	87

	Page	Illus./ Figure
Group 06 Electrical System (continued)		
0613 Front Lights Cable Assembly.....	88-1	88
0613 Start and Charge Cable Assembly.....	89-1	89
0613 PTO Cable Assembly .....	90-1	90
0613 Door Ajar, Marker and Blackout Control Cable Assembly .....	91-1	91
0613 Windshield Wiper EMI Cable Assembly.....	92-1	92
0613 Chemical Kit Cable Assembly.....	93-1	93
0613 Starter Ground Cable Assembly.....	94-1	94
0613 24V Reverse Polarity Relay Cable Assembly .....	95-1	95
0613 24V Alternator Cable Assembly .....	96-1	96
0613 24V Power Distribution Panel Cable Assembly .....	97-1	97
0613 12V Power Distribution Panel Cable Assembly .....	98-1	98
0613 Power Distribution Panel Ground Cable Assembly .....	99-1	99
0613 Starter Power Cable Assembly .....	100-1	100
0613 Battery Ground Cable Assembly .....	101-1	101
0613 12V Alternator Cable Assembly .....	102-1	102
0613 12V Reverse Polarity Relay Cable Assembly .....	103-1	103
0613 Clearance Light Cable Assembly.....	104-1	104
0613 Starter to Chassis Ground Cable and Clamps .....	105-1	105
0613 CTIS Cable Assembly .....	106-1	106
0613 Auxillary Panel Cable Assembly.....	107-1	107
Group 07 Transmission		
0705 WTEC II Transmission Electronic Control Unit.....	108-1	108
0705 WTEC II Vehicle Interface Module.....	109-1	109
0705 WTEC III Transmission Electronic Control Unit.....	110-1	110
0705 WTEC III Transmission Gear Selector .....	111-1	111
0708 Torque Converter Module.....	112-1	112
0710 Transmission with Container.....	113-1	113
0710 Transmission Mounts.....	114-1	114
0710 Transmission Dipstick .....	115-1	115
0710 Front Support Assembly.....	116-1	116
0710 P1 Planetary Carrier.....	117-1	117
0710 P2 Planetary Carrier.....	118-1	118
0710 P3 Planetary Carrier.....	119-1	119
0710 Converter Housing Module .....	120-1	120
0710 Mainshaft Module .....	121-1	121
0710 Adapter Housing Module.....	122-1	122
0713 C3, C4 and C5 Clutch .....	123-1	123
0713 Rotating Clutch Module.....	124-1	124
0714 Control Valve Module .....	125-1	125
0721 Transmission Oil Filler Tube, Cooler, Hoses, Bracket and Clamps .....	126-1	126
0721 Transmission Oil Filters .....	127-1	127
0721 Scavenge Pump, Hose and Fittings .....	128-1	128
0721 Transmission Oil Sampling Valve .....	129-1	129
Group 08 Transfer and Final Drive Assembly		
0801 Transfer Case Module.....	130-1	130
Group 09 Propeller Shafts/Universal Joints Assembly		
0900 M1078, M1079, M1081 Driveshafts.....	131-1	131
Group 10 Front Axles		
1000 Front Axle and Wheel End Assembly.....	132-1	132

	Page	Illus./ Figure
Group 10 Front axles (continued)		
1002 Front Axle Differential Carrier.....	133-1	133
Group 11 Rear Axles		
1100 Rear Axle and Wheel End Assembly.....	134-1	134
1102 Rear Axle Differential Carrier.....	135-1	135
Group 12 Brakes		
1202 Brake Assembly .....	136-1	136
1208 Air Brake Chambers and Cage Bolts.....	137-1	137
1208 Front Gladhands, Hoses and Fittings .....	138-1	138
1208 Rear Gladhands, Hoses and Fittings .....	139-1	139
1208 Front Brake Valve, Hoses and Fittings.....	140-1	140
1208 Air Tanks, Clamps, Hoses and Fittings .....	141-1	141
1208 CTIS Quick Relief Valves, Hoses and Fittings .....	142-1	142
1208 Load Sensing Valve, Hoses and Fittings .....	143-1	143
1208 Air Brake Protection Valve, Hoses and Fittings .....	144-1	144
1208 Anti-Compound Relay Valve, Hoses, and Fittings.....	145-1	145
1208 Air Relay Valve, Hoses and Fittings .....	146-1	146
1208 Two Way Check Valve, Hoses and Fittings.....	147-1	147
1208 Inversion Valve, Hoses and Fittings .....	148-1	148
1208 Rear Brake Hoses and Fittings.....	149-1	149
1208 Rear Brake Hose Clamps and Brackets .....	150-1	150
1208 Pneumatic Hose Routing Loop Clamps and Brackets .....	151-1	151
1208 Brake Pedal, Foot Control Valve, Hoses and Fittings.....	152-1	152
1208 Park and Trailer Air Supply Valves, Hoses and Fittings .....	153-1	153
1208 Low Pressure Transmitter, Two Way Check Valves, Hoses and Fittings.....	154-1	154
1208 Park Control, Emergency/Service Two Way Check Valve, Hoses and Fittings .....	155-1	155
1208 Manifold Valve, Hoses and Fittings .....	156-1	156
1209 Air Compressor .....	157-1	157
Group 13 Wheels		
1311 Wheel Assembly and CTIS Valve.....	158-1	158
1313 Tire .....	159-1	159
Group 14 Steering		
1401 Tie Rod and Tie Rod Ends.....	160-1	160
1401 Steering Wheel and Column.....	161-1	161
1407 Steering Gear, Pitman Arm and Drag Link .....	162-1	162
1410 Power Steering Pump .....	163-1	163
1411 Power Steering Hoses.....	164-1	164
1413 Power Steering Reservoir .....	165-1	165
Group 15 Frame.....		
1501 M1078, M1079, M1080 Frame Assembly .....	166-1	166
1501 M1081 Frame Assembly .....	167-1	167
1501 Rear Light Carrier .....	168-1	168
1501 Air Drop Extraction Assembly .....	169-1	169
1501 Air Drop Extraction Assembly Brackets .....	170-1	170
1501 Airdrop Parachute Suspension Assembly .....	171-1	171
1501 Front Bumper and Gravel Deflector .....	172-1	172
1501 Front Lift Beam.....	173-1	173
1503 Pintle Hook .....	174-1	174
1504 Spare Tire Retainer .....	175-1	175

	Page	Illus./ Figure
Group 16		
Springs and Shocks		
1601 Front Leaf Spring Suspension.....	176-1	176
1601 Front Resilient Mount and Angle Brackets.....	177-1	177
1601 Rear Leaf Springs.....	178-1	178
1601 Rear Resilient Mount and Mechanical Stop.....	179-1	179
1604 Front Shocks.....	180-1	180
1604 Rear Shocks.....	181-1	181
1605 Rear Stabilizer Bar.....	182-1	182
Group 18		
Body and Cab		
1801 Standard Cab Assembly, Doors, and Hinges.....	183-1	183
1801 Air Drop Cab Assembly, Doors, and Hinges.....	184-1	184
1801 Dashboard.....	185-1	185
1801 Roof Hatch and Front Grille.....	186-1	186
1801 Engine Splash Guards.....	187-1	187
1801 Cab Door Fittings.....	188-1	188
1801 Door Locks and Handles.....	189-1	189
1801 Air Drop Davit Boom Assembly.....	190-1	190
1801 Front Cab Supports.....	191-1	191
1801 Rear Cab Support, Leveling Valve, Latch, Air Spring, Hoses and Fittings.....	192-1	192
1801 Cab Fenders.....	193-1	193
1801 Van Splash Shields.....	194-1	194
1802 Standard Cab Windows.....	195-1	195
1802 Air Drop Cab Windows.....	196-1	196
1802 Cab Door Windows and Fittings.....	197-1	197
1802 Rear Fenders and Splash Guards.....	198-1	198
1802 Cab Steps.....	199-1	199
1804 Cab Drain Plugs.....	200-1	200
1805 Cab Floor Coverings and Door Seals.....	201-1	201
1806 Standard Cab Liners, Boarding Handles and Sun Visors.....	202-1	202
1806 Air Drop Panels, Visors and Boarding Handles.....	203-1	203
1806 Center Seat and Seat Belt.....	204-1	204
1806 Passenger Seat and Seat Belt.....	205-1	205
1806 Driver Seat and Seat Belt.....	206-1	206
1808 Tool Box.....	207-1	207
1808 Cab Storage Box Assembly.....	208-1	208
1810 M1078 Cargo Bed, Droptside Assembly and Ladder.....	209-1	209
1810 M1081 Cargo Bed, Droptside Assembly and Ladder.....	210-1	210
1810 Cargo Bed Droptside Assembly.....	211-1	211
1810 M1078 and M1081 Cargo Bed Sub-Assembly.....	212-1	212
1810 Load Spreader Rear Lift Beam.....	213-1	213
1810 Bow Stowage Door, Hinge and Latch.....	214-1	214
1812 Van Body Upper Subframe.....	215-1	215
1812 Van Lifting Arm Assembly.....	216-1	216
1812 Van Pod Assembly.....	217-1	217
1812 Van Spreader Bar.....	218-1	218
1812 Van Body Panels, Fittings and Hardware.....	219-1	219

	Page	Illus./ Figure
<b>Group 18</b>	<b>Body and Cab (continued)</b>	
	1812 Van Steps.....	220-1 220
	1812 Van Door Catch Striker and Fittings.....	221-1 221
	1812 Van Right Hand Door.....	222-1 222
	1812 Van Right Hand Door, Window and Blackout Shield.....	223-1 223
	1812 Van Left Hand Door.....	224-1 224
	1812 Van Door Check Left and Right.....	225-1 225
	1812 Van Large Window Assembly.....	226-1 226
	1812 Van Small Window, Screen and Cover.....	227-1 227
	1812 Van Tapping Plates.....	228-1 228
	1812 Van Electrical Boxes, Switches and Fittings.....	229-1 229
	1812 Van Electrical Conduits.....	230-1 230
	1812 Van Blackout Switches.....	231-1 231
	1812 Van Blackout and Emergency Lights.....	232-1 232
	1812 Van Fluorescent Lights.....	233-1 233
	1812 Van Clearance Lights.....	234-1 234
	1812 Van Relay Box Assembly.....	235-1 235
	1812 Van Breaker Box Assembly.....	236-1 236
	1812 Van Exhaust Fan Assembly.....	237-1 237
	1812 Van 110/208V Power Panel.....	238-1 238
	1812 Van 12/24V Power Panel.....	239-1 239
	1812 Van Data and Identification Plates.....	240-1 240
<b>Group 20</b>	<b>Hoist, Winch, Power Control Unit and Power Take-Off</b>	
	2001 11K Self Recovery Winch Assembly.....	241-1 241
	2001 11K Self Recovery Winch Cable, Guides, Rollers and Brackets.....	242-1 242
	2004 Power Take-Off Assembly.....	243-1 243
<b>Group 22</b>	<b>Body Chassis and Accessories</b>	
	2202 Rear Reflectors.....	244-1 244
	2202 Windshield Washer Reservoir.....	245-1 245
	2202 Windshield Wiper and Motor.....	246-1 246
	2202 Cab Mirrors.....	247-1 247
	2202 Front Reflectors.....	248-1 248
	2207 Personnel Heater Assembly.....	249-1 249
	2210 Data and Identification Plates.....	250-1 250
<b>Group 24</b>	<b>Body Hydraulic Lift Components</b>	
	2401 Air/Hydraulic Power Unit, Hoses and Fittings.....	251-1 251
	2401 Back-up Hydraulic Pump, Hoses and Fittings.....	252-1 252
	2402 Hydraulic Manifold Hoses and Fittings.....	253-1 253
	2402 Hydraulic Manifold Assembly.....	254-1 254
	2402 Hydraulic Manifold Assembly.....	255-1 255
	2404 Spare Tire Retainer Lift Cylinder, Hoses and Fittings.....	256-1 256
	2404 Cab Hydraulic Cylinder, Hoses and Fittings.....	257-1 257
	2406 Hydraulic Rotary Pump, Winch Control Valve, Hoses and Fittings.....	258-1 258
	2407 Suspension Cylinder, Hoses and Fittings.....	259-1 259
	2408 Hydraulic Reservoir and Filter.....	260-1 260
<b>Group 33</b>	<b>Special Purpose Kits</b>	
	3301 Engine Container.....	261-1 261



	Page	Illus./ Figure
Group 33 Special Purpose Kits (continued)		
3301 Transmission Container .....	262-1	262
3303 Van Heater Kit .....	263-1	263
3303 EMI Shielded Pump Assembly .....	264-1	264
3303 Van Air Conditioner Kit .....	265-1	265
3303 Options Panel Kit .....	266-1	266
3307 M1078 and M1081 Troopseat Kit .....	267-1	267
3307 M1078 AND M1081 Soft Top Cover Kit (Steel) .....	268-1	268
3307 Amber Warning Light .....	269-1	269
3303 Flywheel Housing Vent Kit.....	270-1	270
3303 200A Polarity Protection Device, Terminal, Block, .....	271-1	271
Cables and Brackets		
3307 200A Alternator and Regulator .....	272-1	272
3307 Light Material Handling Crane Kit.....	273-1	273
3307 Light Material Handling Crane Winch Assembly .....	274-1	274
3307 Light Material Handling Crane Hoist Assembly .....	275-1	275
3307 Light Material Handling Crane Mast and Swing Assembly .....	276-1	276
3307 Light Material Handling Crane Handle Assembly .....	277-1	277
3307 Light Material Handling Crane Boom Assembly .....	278-1	278
3307 Light Material Handling Crane Cable Extension .....	279-1	279
3307 Light Material Handling Crane Plug and Circuit Breaker .....	280-1	280
3307 Shelter Tiedown Kit .....	281-1	281
3307 S280 Shelter Ladder Adapter Kit .....	282-1	282
3307 Crane Adapter Kit.....	283-1	283
Group 34 Armaments, Sighting and Fire Control Material		
3402 Machine Gun Mounting Kit .....	284-1	284
3402 Small Arms Mount .....	285-1	285
3402 Air Dryer, Hoses and Fittings .....	286-1	286
3402 Wet Air Tank, Clamps, Hoses and Fittings .....	287-1	287
Group 47 Measuring Gages		
4705 Air Filter Warning Indicator .....	288-1	288
Group 94 Repair Kits		
Repair Kits .....	Kits-1	
Group 95 Hardware Supplies and Bulk Material, Common		
Bulk Items.....	Bulk-1	
 Section III. SPECIAL TOOLS LIST		
Group 26 Tools and Test Equipment		
2604 Unit Maintenance Special Tools.....	289-1	289
2604 Direct Support Maintenance Special Tools .....	290-1	290
2604 General Support Maintenance Special Tools .....	291-1	291
 Section IV. CROSS REFERENCE INDEX		
Part Number Index .....	I-1	
National Stock Number Index.....	I-122	
Figure and Item Number Index .....	I-172	

# UNIT, DIRECT SUPPORT, AND GENERAL SUPPORT MAINTENANCE REPAIR PARTS AND SPECIAL TOOLS LIST

## SECTION I. INTRODUCTION

### 1.Scope.

This RPSTL lists and authorizes spares and repair parts; special tools; special test, measurement, diagnostic equipment (TMDE); and other special support equipment required for performance of unit, direct support, and general support maintenance of the M1078 Series LMTV. It authorizes the requisitioning, issue, and disposition of spares, repair parts and special tools as indicated by the source, maintenance and recoverability (SMR) codes.

### 2.General.

In addition to Section I, Introduction, this Repair Parts and Special Tools List is divided into the following sections:

a.Section II. Repair Parts List. A list of spares and repair parts authorized by this RPSTL for use in the performance of maintenance. The lists also includes parts which must be removed for replacement of authorized parts. Parts lists are composed of functional groups in ascending alphanumeric sequence, with the parts in each group listed in ascending figure and item number sequence. Bulk materials are listed by item name in FIG. BULK at the end of the section. Repair parts kits are listed separately in their own functional group within Section II. Repair parts for repairable special tools are also listed in this section.

b.Section III. Special Tools List. A list of special tools, special TDME, and other special support equipment authorized by this RPSTL (as indicated by Basis of Issue (BOI) information in DESCRIPTION AND USABLE ON CODE column) for the performance of maintenance.

c.Section IV. Cross-Reference Index. A list, in National Item Identification Number (NIIN) sequence, of all National stock numbered items appearing in the listings, followed by a list in alphanumeric sequence of all part numbers appearing in the listings. National stock numbers and part numbers are cross-referenced to each illustration figure and item number appearance. The figure and item number index lists figure and item numbers in alphanumeric sequence and cross-references NSN, CAGEC and part numbers.

## **Section II. REPAIR PARTS LIST**

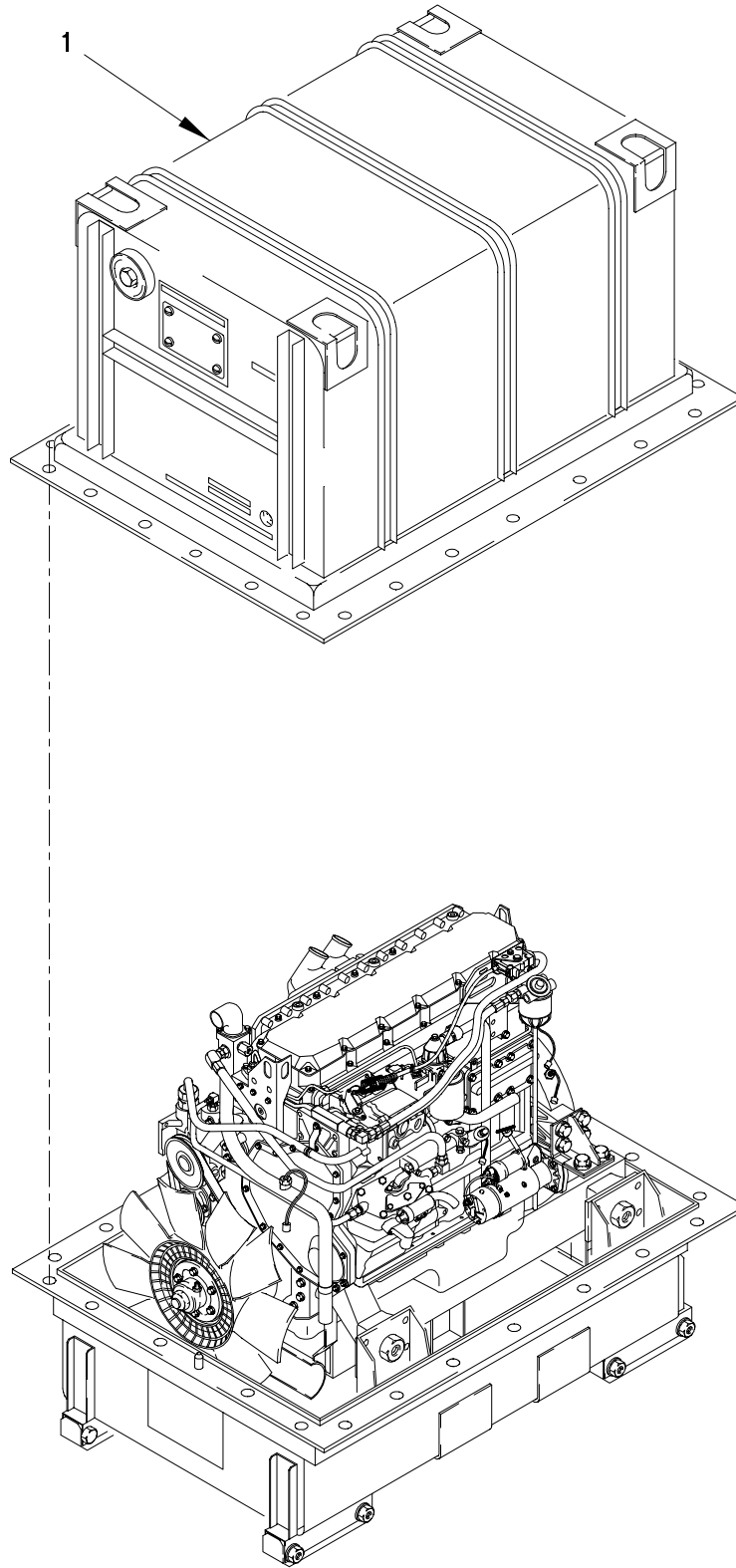


FIGURE 1. DRESSED ENGINE WITH CONTAINER

SECTION II

TM 9-2320-365-24P

(1)	(2)	(3)	(4)	(5)	(6)
ITEM	SMR		PART	DESCRIPTION AND	
NO	CODE	FSCM	NUMBER	USABLE ON CODE (UOC)	QTY

GROUP 0100: ENGINE ASSEMBLY  
FIG.1 DRESSED ENGINE WITH CONTAINER

1	PAFHH	0FW39	12414398-003	ENGINE AND CONTAINER .....	1
---	-------	-------	--------------	----------------------------	---

END OF FIGURE

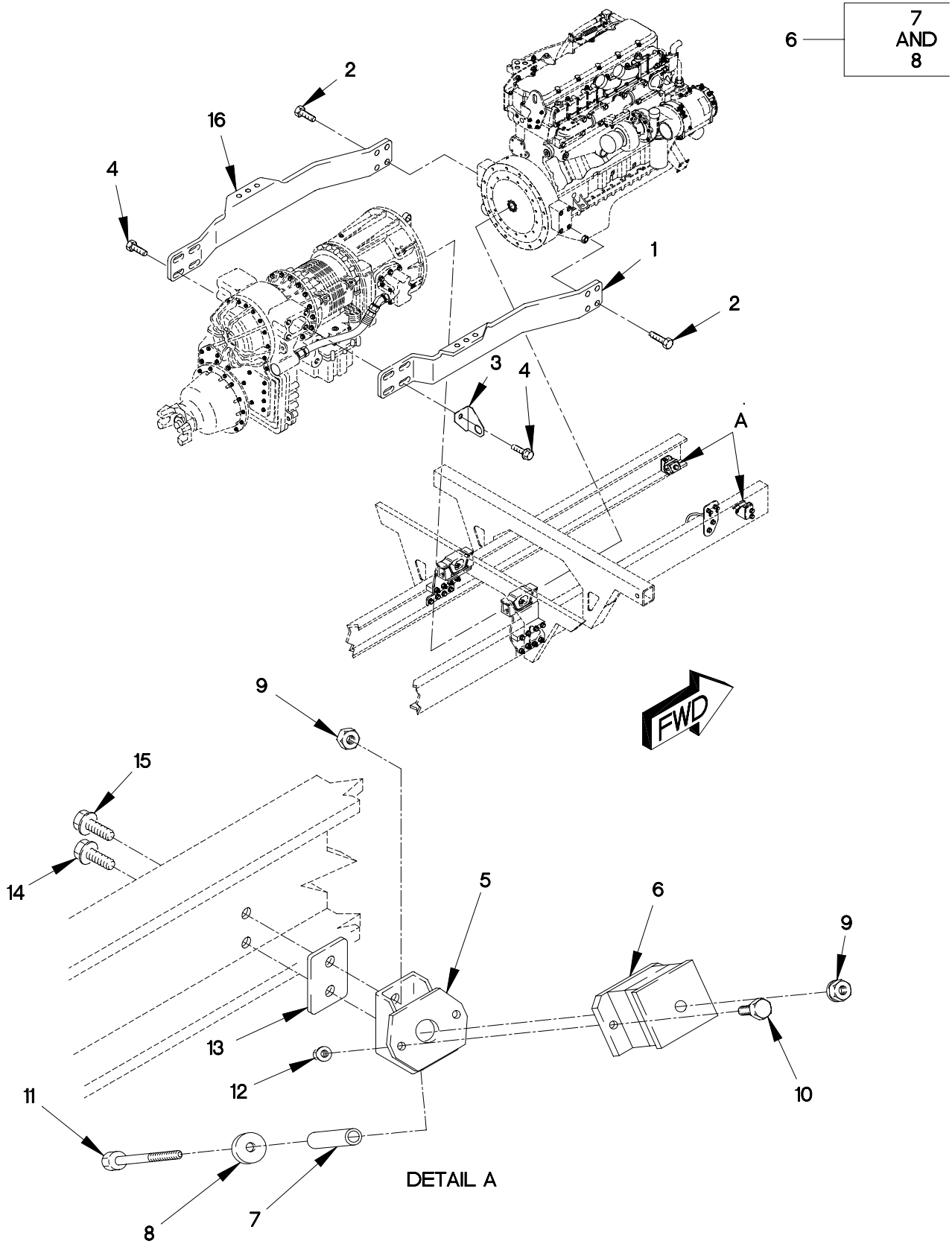


FIGURE 2. ENGINE MOUNTS

(1) ITEM NO	(2) SMR CODE	(3) FSCM	(4) PART NUMBER	(5) DESCRIPTION AND USABLE ON CODE (UOC)	(6) QTY
GROUP 0100: ENGINE ASSEMBLY FIG.2 ENGINE MOUNTS					
1	PAFZZ	19207	12414289-001	BRACKET,ENGINE MOUN.....	1
2	PAFZZ	19207	12414566-001	SCREW,CAP,HEXAGON H M14 X 2 X 35...	8
3	PAFZZ	0FW39	12420840-001	BRACKET,ANGLE.....	1
4	PAFZZ	19207	12414307-194	SCREW,CAP,HEXAGON H M20 X 2.5 X 60.	8
5	PAFZZ	19207	12414285	BRACKET,ENGINE MOUN.....	2
6	PAFZZ	81860	26112	MOUNT,RESILIENT.....	2
7	PAFZZ	19207	12419221	.SPACER,SLEEVE.....	2
8	PAFZZ	19207	12419222	.WASHER,FLAT 1/2.....	2
9	PAFZZ	19207	12414308-021	NUT,SELF-LOCKING,EX M12 X 1.5.....	6
10	PAFZZ	19207	12414307-037	BOLT,MACHINE M8 X 1.25 X 25.....	4
11	PAFZZ	19207	12414307-087	BOLT,MACHINE M12 X 1.5 X 90.....	2
12	PAFZZ	19207	12414308-018	NUT,SELF-LOCKING,EX M8 X 1.25.....	4
13	PAFZZ	19207	12414665	SPACER,PLATE.....	2
14	PAFZZ	19207	12414307-078	BOLT,MACHINE M12 X 1.5 X 35.....	3
15	PAFZZ	19207	12414307-079	BOLT,MACHINE M12 X 1.5 X 40.....	1
16	PAFZZ	19207	12414290-001	BRACKET,ENGINE MOUN.....	1

END OF FIGURE

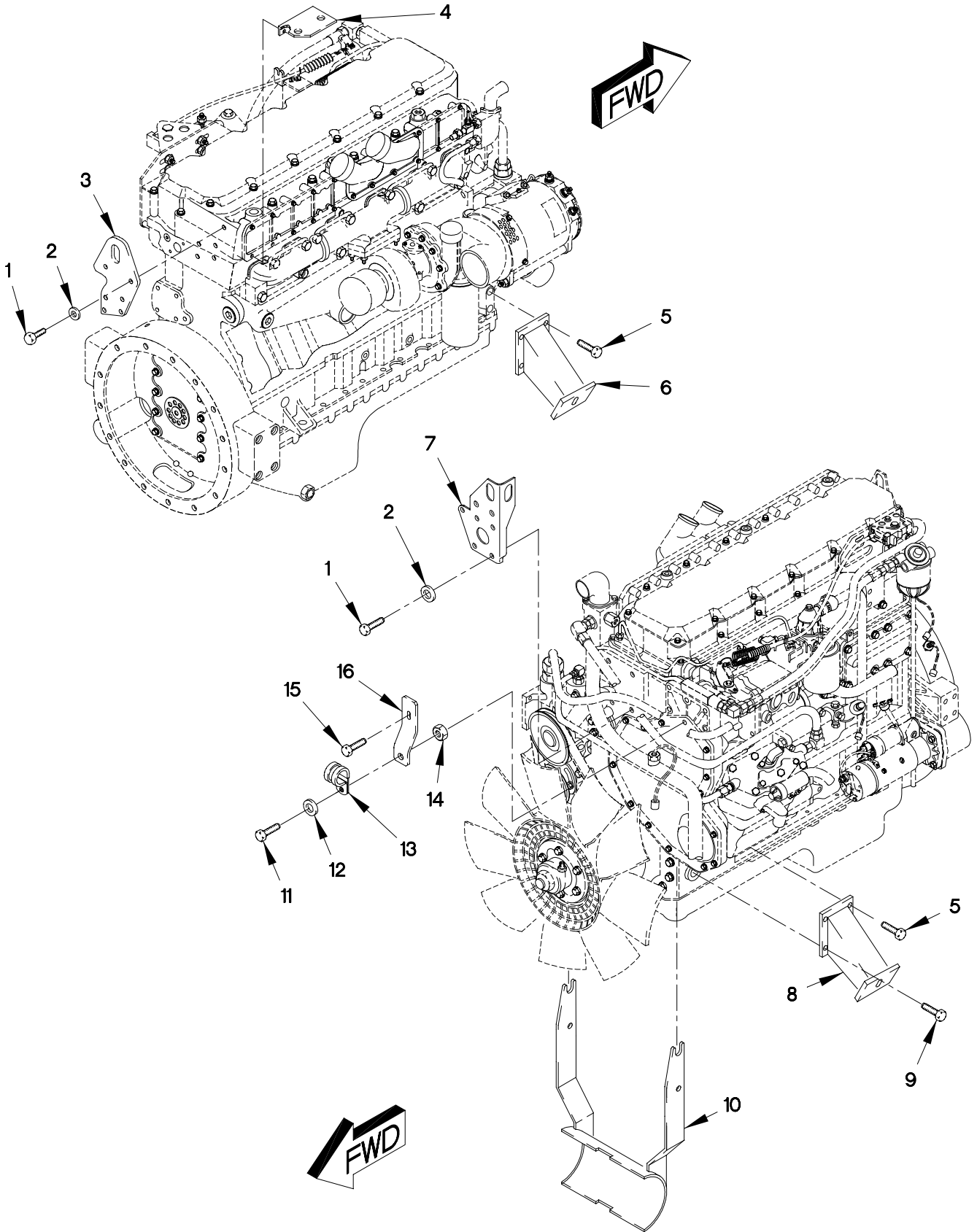


FIGURE 3. ENGINE BRACKETS



## SECTION II

TM 9-2320-365-24P

(1) ITEM NO	(2) SMR CODE	(3) FSCM	(4) PART NUMBER	(5) DESCRIPTION AND USABLE ON CODE (UOC)	(6) QTY
GROUP 0100: ENGINE ASSEMBLY FIG.3 ENGINE BRACKETS					
1	PAOZZ	11083	8T4136	BOLT,MACHINE M10 X 1.5 X 25.....	9
2	PAOZZ	11083	8T4121	WASHER,FLAT M11.....	9
3	PAOZZ	11083	4R9234	PLATE,MOUNTING.....	1
4	PAOZZ	19207	12421149	BRACKET,ANGLE.....	1
5	PAOZZ	19207	12414566-002	SCREW,CAP,HEXAGON H M14 X 2 X 40...	6
6	PAOZZ	19207	12414287	BRACKET,ENGINE MOUN.....	1
7	PAOZZ	11083	4R9233	BRACKET,ANGLE.....	1
8	PAOZZ	19207	12414286	BRACKET,VEHICULAR C.....	1
9	PAOZZ	19207	12414566-001	SCREW,CAP,HEXAGON H M14 X 2 X 35...	2
10	PAOZZ	0FW39	12414432	BRACKET,MOUNTING.....	1
11	PAOZZ	64678	000933 006058	SCREW,CAP,HEXAGON H M6 X 1 X 25....	1
12	PAOZZ	19200	12524631-1	WASHER,FLAT M6.....	1
13	PAOZZ	96906	MS21333-107	CLAMP,LOOP 1 IN.....	1
14	PAOZZ	15526	DIN 934 ST M6	NUT,PLAIN,HEXAGON M6 X 1.....	1
15	PAOZZ	15526	DIN933-M10X20-8. 8-A4C	BOLT,MACHINE M10 X 1.5 X 20.....	1
16	PAOZZ	19207	12414401	BRACKET,ENGINE MOUN.....	1

END OF FIGURE

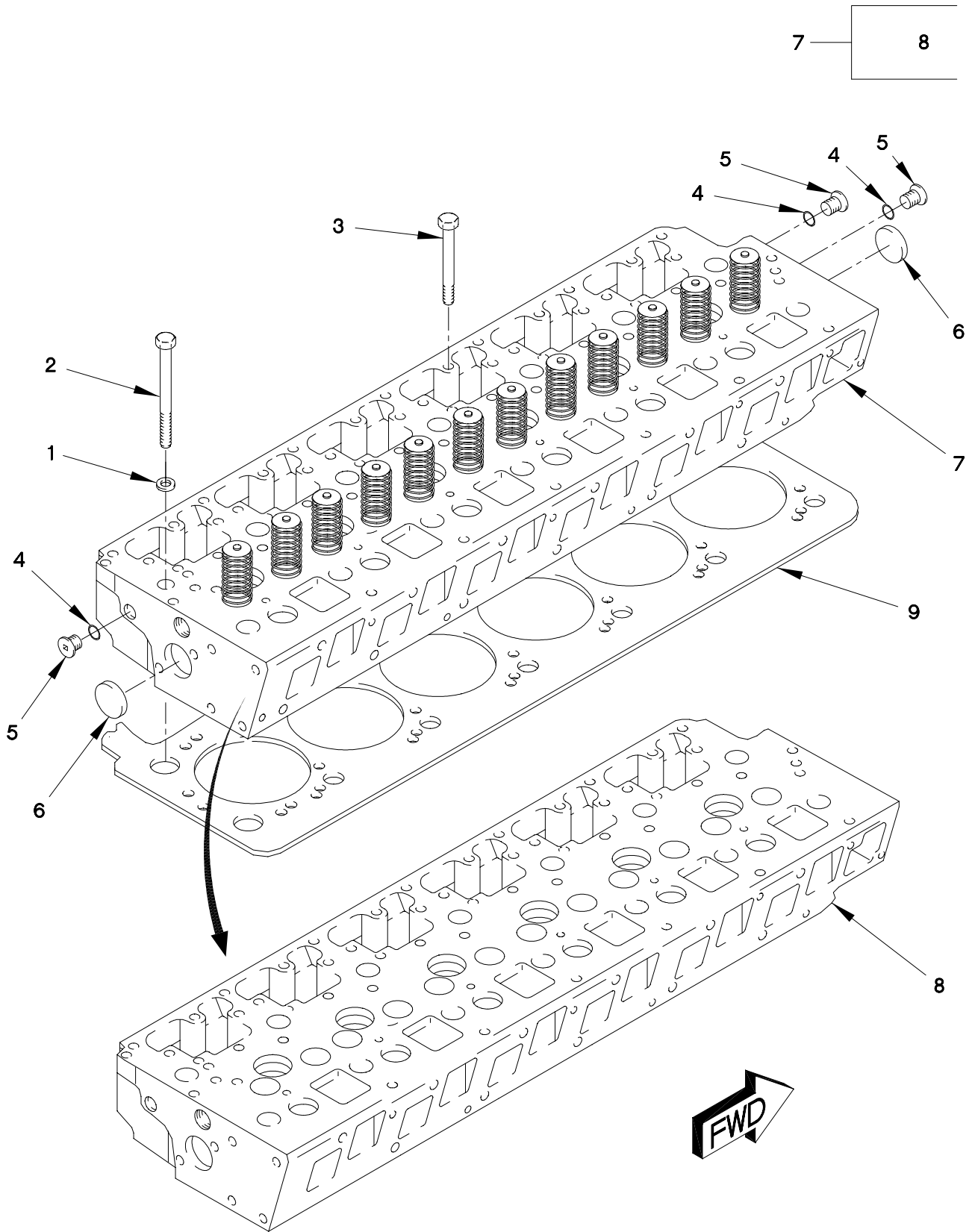


FIGURE 4. CYLINDER HEAD WITH VALVES AND GASKET

(1) ITEM NO	(2) SMR CODE	(3) FSCM	(4) PART NUMBER	(5) DESCRIPTION AND USABLE ON CODE (UOC)	(6) QTY
GROUP 0101: CRANKCASE, BLOCK, CYLINDER HEAD					
FIG.4 CYLINDER HEAD WITH VALVES AND GASKET					
1	PAFZZ	11083	8T3282	SPACER,RING.....	14
2	PAFZZ	11083	8T0657	SCREW,CAP,HEXAGON H M20 X 2.5 X 160.....	14
3	PAFZZ	11083	8T5030	SCREW,CAP,HEXAGON H M10 X 1.5 X 120.....	6
4	PAFZZ	11083	1J9671	PACKING,PREFORMED PART OF KIT P/N 9X8318.....	3
5	PAFZZ	11083	9S8003	PLUG,MACHINE THREAD.....	3
6	PAFZZ	11083	2M6471	PLUG,EXPANSION.....	2
7	AHHHH	11083	115-4165	CYLINDER HEAD,DIESE.....	1
8	PAHHH	11083	115-4107	.CYLINDER HEAD,DIESE (WITH GUIDES, INSERTS AND SLEEVES).....	1
9	PAFZZ	11083	4P6930	GASKET PART OF KIT P/N 9X8318.....	1

END OF FIGURE

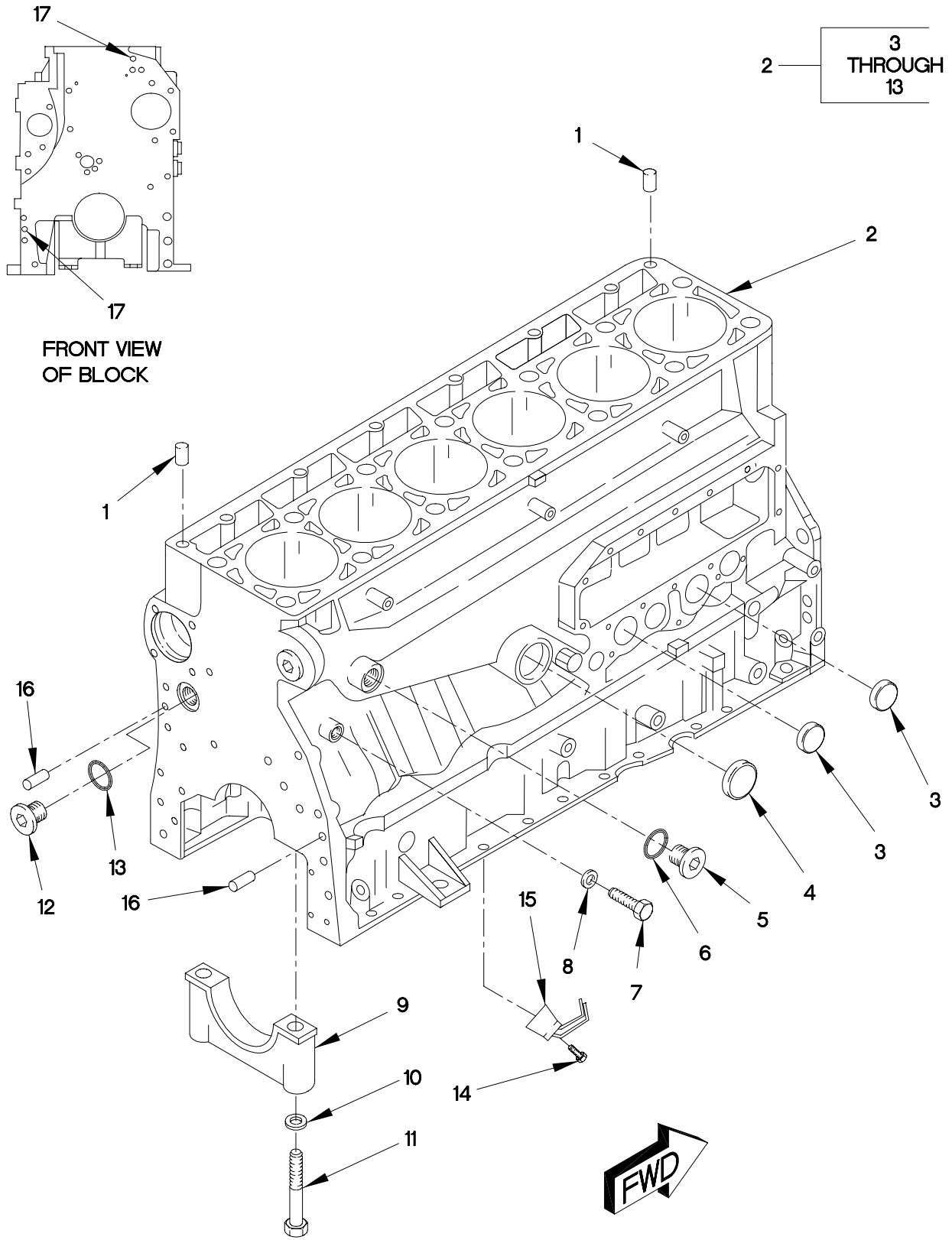


FIGURE 5. CYLINDER BLOCK