

# TM 9-2350-311-24P-1

THIS MANUAL SUPERSEDES MANUAL DATED JULY 1993.  
SEE TABLE OF CONTENTS PAGE FOR DETAILS.

---

## TECHNICAL MANUAL

### UNIT, DIRECT SUPPORT AND GENERAL SUPPORT MAINTENANCE REPAIR PARTS AND SPECIAL TOOLS LIST (INCLUDING DEPOT MAINTENANCE REPAIR PARTS AND SPECIAL TOOLS)

FOR

### HOWITZER, MEDIUM, SELF PROPELLED: 155 MM

MI09A2 (NSN 2350-01-031-0586) (EIC: 3E2)  
MI09A3 (NSN 2350-01-031-8851) (EIC: 3E2)  
MI09A4 (NSN 2350-01-277-5770) (EIC: 3E8)  
MI09A5 (NSN 2350-01-281-1719) (EIC: 3E7)

HULL

Distribution Statement A. Approved for public release; distribution is unlimited.

---

HEADQUARTERS, DEPARTMENT OF THE ARMY

SEPTEMBER 1994

**UNIT, DIRECT SUPPORT AND  
GENERAL SUPPORT MAINTENANCE  
REPAIR PARTS AND SPECIAL TOOLS LIST  
(Including Depot Maintenance  
Repair Parts and Special Tools)**

**FOR  
HOWITZER, MEDIUM, SELF PROPELLED  
155MM, M109A2 (2350-01-031-0586) (EIC:3EZ)  
AND  
HOWITZER, MEDIUM, SELF PROPELLED  
155MM, M109A3 (2350-01-031-8851) (EIC:3E2)  
AND  
HOWITZER, MEDIUM, SELF PROPELLED  
155MM, M109A4 (2350-01-277-5770) (EIC:3E8)  
AND  
HOWITZER, MEDIUM, SELF PROPELLED  
155MM, M109A5 (2350-01-281-1719) (EIC:3E7)**

**Current as of 15 August 1994**

Distribution Statement A, Approved for public release; distribution is unlimited.

**REPORTING OF ERRORS**

You can help improve this manual. If you find any mistakes or if you know of a way to improve the procedures, please let us know. Mail your letter, DA Form 2028 (Recommended Changes to Publications and Blank Forms), or DA Form 2028-2 located in the back of this manual direct to Commander, US Army Tank-automotive and Armaments Command, ATTN: AMSTA-MMAA, Warren, MI 48397-5000. A reply will be furnished to you.

You may also provide DA Form 2028-2 information to TACOM via datafax or e-mail:

- TACOM'S fax number is DSN 786-6323
- TACOM'S e-mail address is amsta-mmaa@cc.tacom. army.mil

**THIS MANUAL SUPERSEDES MANUAL TM 9-2350-311-24P-1 DATED JULY 1993.**

TABLE OF CONTENTS

	Page	Figure
SECTION I: INTRODUCTION .....	1	
SECTION II. REPAIR PARTS LIST .....	1-1	
Group 01 Engine		
0100 Engine (7083-7396) and Container Assembly . . .	1-1	1
Engine (7083-7391) and Container Assembly . . .	2-1	2
Engine Mounting Base Assembly 7527607, Mounts and Brackets .....	3-1	3
Engine Vibration Damper and Engine Transmission Support.....	4-1	4
Engine Breather Hoses, Clamps and Brackets . . . . .	5-1	5
Engine Oil Filter Hoses; Mount Assembly and Transmission Coolant Hoses; Oil Transmitter Fittings; and Protective Cover .....	6-1	6
Group 03 Fuel System		
0302 Fuel Pump and Hanger Assemblies, Right and Left; and Access Covers, Right and Left . . . . .	7-1	7
0304 Air Cleaner Duct, Hoses and Clamps .....	8-1	8
Air Cleaner Hoses, Cover Assembly, and Baffle Assembly . . . . .	9-1	9
Air Cleaner Centrifugal Fan and Motor . . . . .	10-1	10
Air Cleaner Assembly, Element and Gaskets . . . . .	11-1	11
0306 Engine Fuel Lines and Fittings . . . . .	12-1	12
Upper and Lower Fuel Tanks, Lines and Fittings and Related Parts . . . . .	13-1	13
Upper Fuel Tank Retainer, Strap and Channel Assembly . . . . .	14-1	14
Upper Fuel Tank Heat Shields and Seals . . . . .	15-1	15
Upper Fuel Tank Shield . . . . .	16-1	16
0312 Accelerator and Throttle Control Linkage and Throttle Bracket .....	17-1	17
Engine Fuel Shutoff Control, Bracket and Pulley and Control Assembly . . . . .	18-1	18
Group 04 Exhaust System		
0401 Engine Exhaust Piping and Insulation . . . . .	19-1	19
Group 05 Cooling System		
0501 Radiator Surge Tank, Valve Hoses and Fittings . . . . .	20-1	20
Engine Coolant Radiator, Cap and Mountings . . . . .	21-1	21
Aeration Detector Assembly 12260278 and Mountings .....	22-1	22
0502 Engine Coolant Shroud Assembly and Mountings . . . . .	23-1	23
0503 Engine Coolant Thermostats, Hoses, Tubes and Fittings .....	24-1	24
0505 Engine Cooling Fan Drive Assembly . . . . .	25-1	25
Engine Cooling Vaneaxial Fan . . . . .	26-1	26
Engine Cooling Vaneaxial Fan Gear Case Assembly.....	27-1	27

Group 06	Electrical System		
0601	Alternator .....	28-1	28
0602	Generator Voltage Regulator, Bilge Pump Relay and Circuit Breaker ....	29-1	29
	Receptacle Cover Plate (Winterization Kit-Tube/Outlet) .....	30-1	30
0606	Aeration Detector Wiring Harness .....	31-1	31
	Starter Switch Relay (A2/A3); Starter Protection Relay (A4/A5) .....	32-1	32
0607	Hull Electrical Circuit Breaker Panel .....	33-1	33
	Driver's Instrument Panel Support Assembly 10903624 .....	34-1	34
	Driver's Instrument Panel Assembly; Panel Light Lamp Assembly; Fuel Prime Lamp Assembly; Indicator Light; and Parking Brake Lamp Assembly .....	35-1	35
	Driver's Instrument Panel Assembly (for use with engine model 7083-7391).....	36-1	36
	Driver's Portable Instrument Panel Assembly and Panel Light Lamp Assemblies .....	37-1	37
	Driver's Portable Instrument Panel Cover Assembly 12260296 and Bracket Assembly 10903279 .....	38-1	38
	Low Coolant Indicator Light Assembly and Wiring Harness .....	39-1	39
	Accessory Control Box Assembly and Body Assembly .....	40-1	40
	In-Tank Fuel Pump and Generator System Relay.....	41 -1	41
	Air Cleaner Blower Relay .....	42-1	42
	Headlight Dimmer Switch.....	43-1	43
	Parking Brake Light Switch Assembly.....	44.-1	44
	Stoplight Switch .....	45-1	45
0608	Rectifier Assembly (A2/A3).....	46-1	46
	Rectifier Assembly (A4/A5).....	47-1	47
	Master Relay and Housing Assembly .....	48-1	48
	Combat Override Switch Assembly (A4/A5).....	49-1	49
0609	Dome Light Assembly .....	50-1	50
	Headlight Assembly .....	51-1	51
	Master Warning Light Assembly .....	52-1	52
	Stop and Blackout Taillights, Left and Right .....	53-1	53
0610	Powerplant Pressure and Temperature Switches.....	54-1	54
0612	Storage Batteries, Cables and Supports, Ground Leads, and Battery Terminal Leads .....	55-1	55
0613	Driver's Portable Instrument Panel Wiring Harness .....	56-1	56
	Circuit Breaker-to-"Y" Connector Lead Assembly .....	57-1	57
	Flame Heater Switch Lead.....	58-1	58
	Battery-to-Master Relay Lead Assembly 10921378.....	59-1	59

Battery-to-Master Relay Lead Assembly 10936487 . . . . .	60-1	60
Heat Selector Switch Lead and Ventilator Blower Switch Leads . . . . .	61-1	61
Indicator Light Ground Lead . . . . .	62-1	62
Ventilator Blower Switch . . . . .	63-1	63
Accessory Control Box Lead Assembly . . . . .	64-1	64
Accessory Control Box Wiring Harness . . . . .	65-1	65
Accessory Control Box Power Lead . . . . .	66-1	66
Engine Bracket-to-Driver's Bulkhead Lead Assembly . . . . .	67-1	67
Master Relay-to-Driver's Bulkhead Lead Assembly . . . . .	68-1	68
Rectifier-to-Regulator Wiring Harness (A2/A3) . . . . .	69-1	69
Rectifier-to-Regulator Wiring Harness (A4/A5) . . . . .	70-1	70
Engine Bracket-to-Driver's Bulkhead Wiring Harness (A2/A3) . . . . .	71-1	71
Driver's Bulkhead-to-Master Relay Wiring Harness (A4/A5) . . . . .	72-1	72
Headlight Harness Assembly . . . . .	73-1	73
Headlight Resilient Mount Wiring Harness . . . . .	74-1	74
Engine Electrical Wiring Harness (A2/A3) . . . . .	75-1	75
Engine Electrical Wiring Harness (A4/A5) . . . . .	76-1	76
Starter-to-Engine Electrical Disconnect (A4/A5) . . . . .	77-1	77
Engine Electrical Ground Lead . . . . .	78-1	78
Air Cleaner Blower Lead Assembly . . . . .	79-1	79
In-Tank Fuel Pump Lead Assembly . . . . .	80-1	80
Instrument Panel Wiring Harness . . . . .	81-1	81
Driver's Compartment Wiring Harness . . . . .	82-1	82
Driver's Interphone Wiring Harness . . . . .	83-1	83
Hull Accessory Wiring Harness . . . . .	84-1	84
Hull Lighting Wiring Harness . . . . .	85-1	85
Hull Front Wiring Harness . . . . .	86-1	86
Hull Main Power Electrical Lead 11593784 . . . . .	87-1	87
Hull Main Power Electrical Lead and Ground Lead 12260266 . . . . .	88-1	88
Power Lead (A4/A5) . . . . .	89-1	89
NATO Slave-to-External Power Harness and Receptacle (A4/A5) . . . . .	90-1	90
Slave Start Receptacle . . . . .	91-1	91
Slip Ring Telephone Feed Wiring Harness . . . . .	92-1	92
Engine Disconnect Bracket-to-Batteries Lead Assembly (A4/A5) . . . . .	93-1	93
Combat Override Switch Ground Lead (A4/A5) . . . . .	94-1	94
Fuel Pump Circuit Breaker-to-"Y" Connector Lead Assembly . . . . .	95-1	95
Fuel Pump Circuit Breaker-to-Fuel Pump Switch Lead Assembly . . . . .	96-1	96
Circuit Breaker-to-"Y" Connector Lead . . . . .	97-1	97
Diode Harness Assembly (A4/A5) . . . . .	98-1	98

	Bulkhead-to-Override Switch Lead Assembly (A4/A5).....	99-1	99
	Driver's Bulkhead-to-Batteries and Shunt Lead Assembly (A4/A5) .....	100-1	100
	Ventilated Face Piece System Power Harness (A4/A5) . . . . .	101-1	101
	NBC Switch-to-Circuit Breaker Lead Assembly (A4/A5) . . . . .	102-1	102
	Air Cleaner Blower Motor Relay Ground Lead (A4/A5) . . . . .	103-1	103
0616	Personnel Ventilating Air Duct Fan.....	104-1	104
Group 07	Transmission		
0705	Transmission Shift Control Linkage and Neutral Safety Switch .....	105-1	105
	Transmission Shift Control Quadrant Assembly.....	106-1	106
0710	Transmission Supports, Pressure Check Plugs, Oil Screen, Gage Rod and Inspection Plates . . . . .	107-1	107
	Power Input Transfer Breather, Mount and Elbow .....	108-1	108
	Transmission and Shipping Container Assembly.....	109-1	109
Group 08	Transfer and Final Drive Assemblies		
0801	Final Drive with Shipping Container Assembly.....	110-1	110
	Final Drive Assembly 10936282 .....	111-1	111
	Universal Joints .....	112-1	112
	Power Input Transfer and Shipping Container Assembly . . . . .	113-1	113
Group 12	Brakes		
1201	Parking Brake Control Linkage and Latch Assembly . . . . .	114-1	114
1206	Service Brake Control Linkage.....	115-1	115
Group 13	Wheels and Tracks		
1301	Torsion Bars Assembly . . . . .	116-1	116
	Road Wheels, Hub Assembly, Road Wheel Arm and Housing Assembly .....	117-1	117
1303	Track Adjuster Idler Arm, Hub Assembly Support and Idler Wheels . . . . .	118-1	118
	Track Adjuster Assembly . . . . .	119-1	119
1304	Track Drive Sprockets and Hub . . . . .	120-1	120
1305	Track Shoe Assemblies . . . . .	121-1	121
Group 14	Steering		
1401	Steering Control Linkage . . . . .	122-1	122
Group 15	Frame, Towing Attachments, and Drawbars		
1503	Towing Pintle Assembly . . . . .	123-1	123
	Tow Cable Hook .....	124-1	124
Group 16	Springs and Shock Absorbers		
1604	Suspension Shock Absorber, Mounting Bracket and Bump Stop .....	125-1	125
Group 18	Body, Cab, Hood and Hull		
1801	Driver's Portable Instrument Panel Mounting Bracket . . . . .	126-1	126
	Hull Front Intake and Exhaust Grilles and Fan Access Door .....	127-1	127

	Hull Front Plates and Transmission and Battery Access Doors . . . . .	128-1	128
	Personnel Air Ventilator Fan Filter, Door and Grille . . . . .	129-1	129
	Travel Lock Assembly and Travel Lock Support . . . . .	130-1	130
	<b>Bulkhead Insulation, Shields and Access Covers, and Engine</b>		
	Access Cover . . . . .	131-1	131
	<b>Torsion Bar Anchor Access Plates and Miscellaneous Hull</b>		
	Components . . . . .	132-1	132
	Miscellaneous Hull Components . . . . .	133-1	133
	<b>Hull Rear Doors, Seals, and Hold-Open Latches (for all A2/A4/A5</b>		
	and some A3 vehicles) . . . . .	134-1	134
	<b>Hull Rear Doors, Seals and Hold-Open Latches (for some A3</b>		
	vehicles) . . . . .	135-1	135
	Rear Door Hold-Open Rod and Parts . . . . .	136-1	136
	Telephone Cable Reel Guard Crank and Hardware . . . . .	137-1	137
1802	Front and Rear Fenders, Retaining Plate and Hinge Rod. . . . .	138-1	138
1803	<b>Driver's Hatch Cover Assembly, Housing Assembly, Seals and Cam</b>		
	Lock . . . . .	139-1	139
	Driver's Hatch Cover Handle Shaft, Stop and Spring . . . . .	140-1	140
	Driver's Periscope Cover, Doors, Seals and Supports . . . . .	141-1	141
1805	Subfloor Drains . . . . .	142-1	142
1806	Driver's Seat Assembly . . . . .	143-1	143
	Loader's (Cannoneer's) Left and Right Seat Assemblies (A2/A3). . . . .	144-1	144
	Loader's (Cannoneer's) Left and Right Seat Assemblies (A4/A5). . . . .	145-1	145
1808	<b>Powder Can Stowage Straps and Hooks . . . . .</b>	<b>146-1</b>	<b>146</b>
	Powder Can Stowage Straps and Hooks, Left and Right Side . . . . .	147-1	147
	Hull Rear Ammunition Racks, Right and Left Side. . . . .	148-1	148
	Hull Ammunition Rack, Right Side . . . . .	149-1	149
	Portable Fire Extinguisher Bracket Assembly 10922863 . . . . .	150-1	150
	Hull Interior Stowage Straps, Clips, Boxes and Holders . . . . .	151-1	151
	Rations Stowage Box Assembly . . . . .	152-1	152
	NBC Suit Stowage Box (A4/A5) . . . . .	153-1	153
Group 20	<b>Hoist, Winch, Capstan, Windlass, Power Control Unit, and Power Take-off</b>		
2005	Vehicle Spade and Strut Assemblies, Latch and Panel . . . . .	154-1	154
Group 22	<b>Body Chassis, and Hull Accessory Items</b>		
2205	Bilge Pump Strainer and Outlet Tubing . . . . .	155-1	155
	Bilge Pump . . . . .	156-1	156
2207	Personnel Heater Assembly . . . . .	157-1	157
	Personnel Heater Exhaust Hose, Tube and Deflector . . . . .	158-1	158

	Personnel Heater Fluid Filter, Fuel Pump, Mounting Clamps, Saddle		
	Ducts and Hoses . . . . .	159-1	159
2210	Identification Plates and instruction Holders.....	160-1	160
Group 33	Special Purpose Kits		
3301	Final Drive Shipping Container 10926250.. . . . .	161-1	161
3303	Engine and Battery Winterization Kit . . . . .	162-1	162
	Winterization Kit, Battery Boxes and Insulation . . . . .	163-1	163
	Winterization Kit, Coolant Heater Exhaust Tube, Fuel Pump, Filters and Lines . . . . .	164-1	164
	Winterization Kit, Battery Heater Coolant Heater Circulating Pump and Hoses . . . . .	165-1	165
	Winterization Kit, Coolant Heater Assembly (Heat Exchanger).....	166-1	166
	Winterization Kit, Coolant Heater Assembly (Heat Exchanger) Housing and Blower Assembly . . . . .	167-1	167
	Winterization Kit, Coolant Heater Control Box Assembly . . . . .	168-1	168
	Winterization Kit, Bulkhead-to-Coolant Heater Control Box Wiring Harness..... . . . .	169-1	169
	Winterization Kit, Coolant Heater-to-Bulkhead Wiring Harness .....	170-1	170
	Winterization Kit, Vehicle Air intake Grille Cover... .	171-1	171
3307	Oil Sampling Kit... . . . .	172-1	172
Group 47	Gages (Non-electrical), Weighing and Measuring Devices		
4701	Speedometer Tachometer Drive-Shafts, Adapters and Fittings.....	173-1	173
4702	Air Cleaner Restriction indicator Hose and Clamp . . . . .	174-1	174
Group 76	Fire Fighting Equipment Components		
7639	Fixed Fire Extinguisher System . . . . .	175-1	175
Group 91	Chemical Biological and Radiological (CBR) Equipment		
9110	NBC Heaters, Hoses and Fittings (A4/A5)..... . . . .	176-1	176
	NBC Heater (A4/A5).. . . . .	177-1	177
9111	NBC Air Purifier(A4/A5).. . . . .	178-1	178
	NBC Air Purifier Bracket Assembly (A4/A5).... . . . .	179-1	179
Group 94	Repair Kits		
9401	Repair Kits . . . . .		KIT-1
Group 95	General Use Standardized Parts		
9501	Bulk Materiel. . . . .		BULK-1
SECTION III.	SPECIAL TOOLS LIST. . . . .		180-1
Group 26	Tools and Test Equipment		
2604	Special Tools . . . . .		180-1 180
	Special Tools-Continued . . . . .		181-1 181
	Special Tools-Continued. . . . .		182-1 182



Pressure Gage Tester ..... 183-1 183

SECTION IV. CROSS-REFERENCE INDEXES.....I-1  
National stock number index ..... I-1  
Part number index ..... I-1  
Figure and item number index .....I-99

# UNIT, DIRECT SUPPORT AND GENERAL SUPPORT MAINTENANCE REPAIR PARTS AND SPECIAL TOOLS LIST

## SECTION I. INTRODUCTION

---

### 1. Scope.

This Repair Parts and Special Tools List (RPSTL) lists and authorizes spares and repair parts; special tools; special test, measurement, and diagnostic equipment (TMDE); and other special support equipment required for performance of Unit, Direct Support, and General Support maintenance of the M109A/2A3/A4/A5 Howitzer. It authorizes the requisitioning, issue, and disposition of spares, repair parts and special tools as indicated by the source, maintenance and recoverability (SMR) codes.

### 2. General.

In addition to Section I, Introduction, this RPSTL is divided into the following sections:

a. Section II. Repair Parts List. A list of spares and repair parts authorized by this RPSTL for use in the performance of maintenance. The list also includes parts which must be removed for replacement of the authorized parts. Parts lists are composed of functional groups in ascending alphanumeric sequence, with the parts in each group listed in ascending figure and item number sequence. Bulk materials are listed in item name sequence. Repair parts kits are listed separately in their own functional group within Section II. Repair parts for repairable special tools are also listed in this section. Items listed are shown on the associated illustration(s)/figure(s).

b. Section III. Special Tools List. A list of special tools, special TMDE, and other special support equipment authorized by this RPSTL (as indicated by Basis of Issue (BOI) information in DESCRIPTION AND USABLE ON CODE column) for the performance of maintenance.

c. Section IV. Cross-reference Indexes. A list, in National Item identification Number (NIIN) sequence, of all national stock numbered items appearing in the listing, followed by a list in alphanumeric sequence of all part numbers appearing in the listings. National stock numbers (NSN's) and part numbers are cross-referenced to each illustration figure and item number appearance. The figure and item number index lists figure and item numbers in alphanumeric sequence and cross-references NSN, Commercial and Government Entity Codes (CAGEC's), and part numbers.

### 3. Explanation of Columns (Section II and III).

a. ITEM NO. (Column(1)). Indicates the number used to identify items called out in the illustration.

b. SMR CODE (Column(2)). The Source, Maintenance, and Recoverability (SMR) code is a 5-position code containing supply/requisitioning information, maintenance category authorization criteria, and disposition instruction, as shown in the following example:

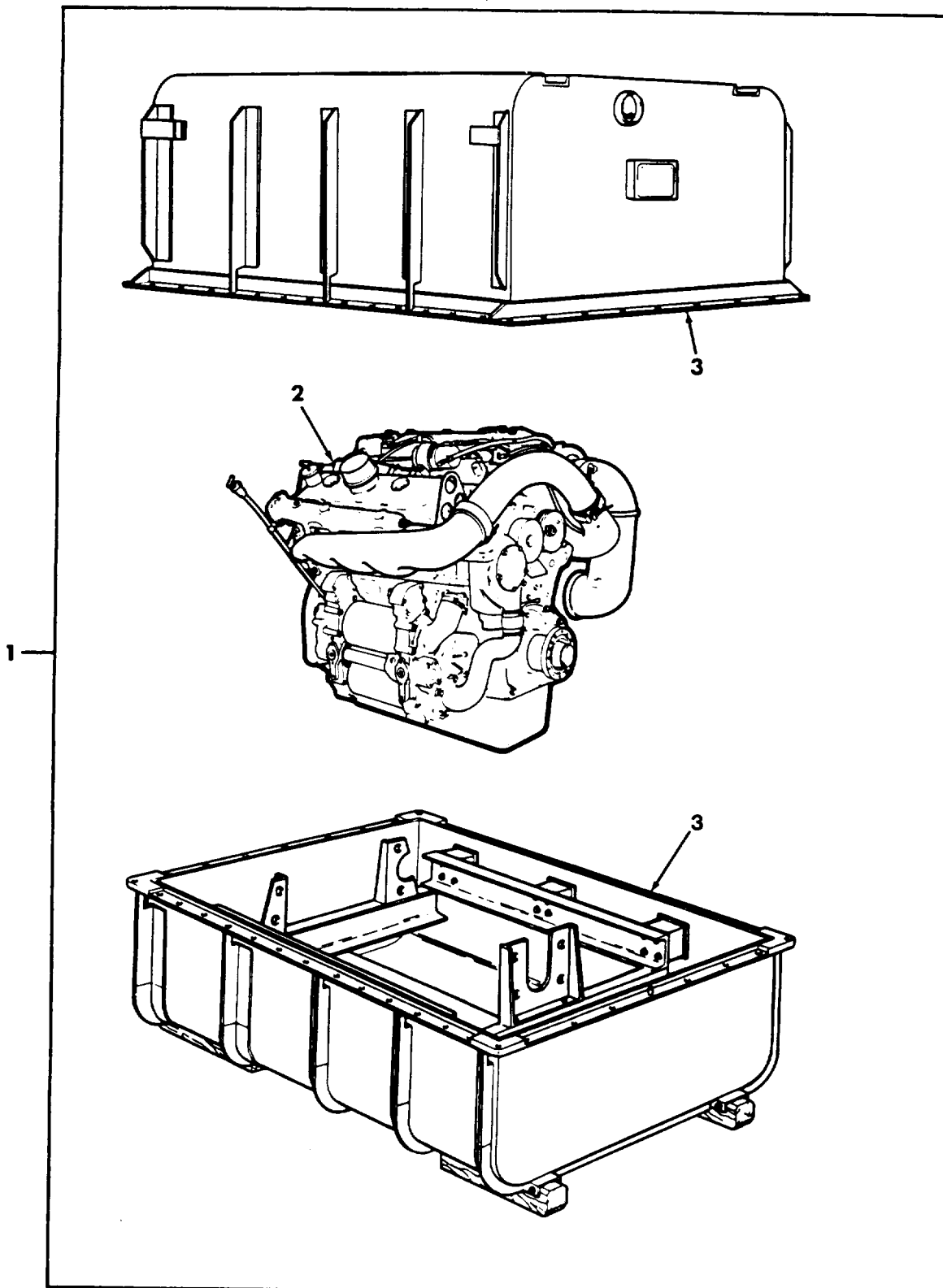


Figure 1. Engine (7083-7396) and Container Assembly

(1) ITEM NO	(2) SMR CODE	(3) CAGEC	(4) PART NUMBER	(5) DESCRIPTION AND USABLE ON CODES (UOC)	(6) QTY
GROUP 01 ENGINE					
GROUP 0100 ENGINE ASSEMBLY.					
FIG. 1 ENGINE (7083-7396) AND CONTAINER ASSEMBLY.					
1	PAFHD	19207	5705713	ENGINE,W CONTAINER INCLUDES FILTERS AND GASKET	1
2	XBFHD	19207	12260210	.ENGINE,DIESEL 8V71T DIESEL ENGINE MODEL 7083-7396	1
3	PBFHD	19207	12268285	.SHIPPING AND STORAGE	1
END OF FIGURE					

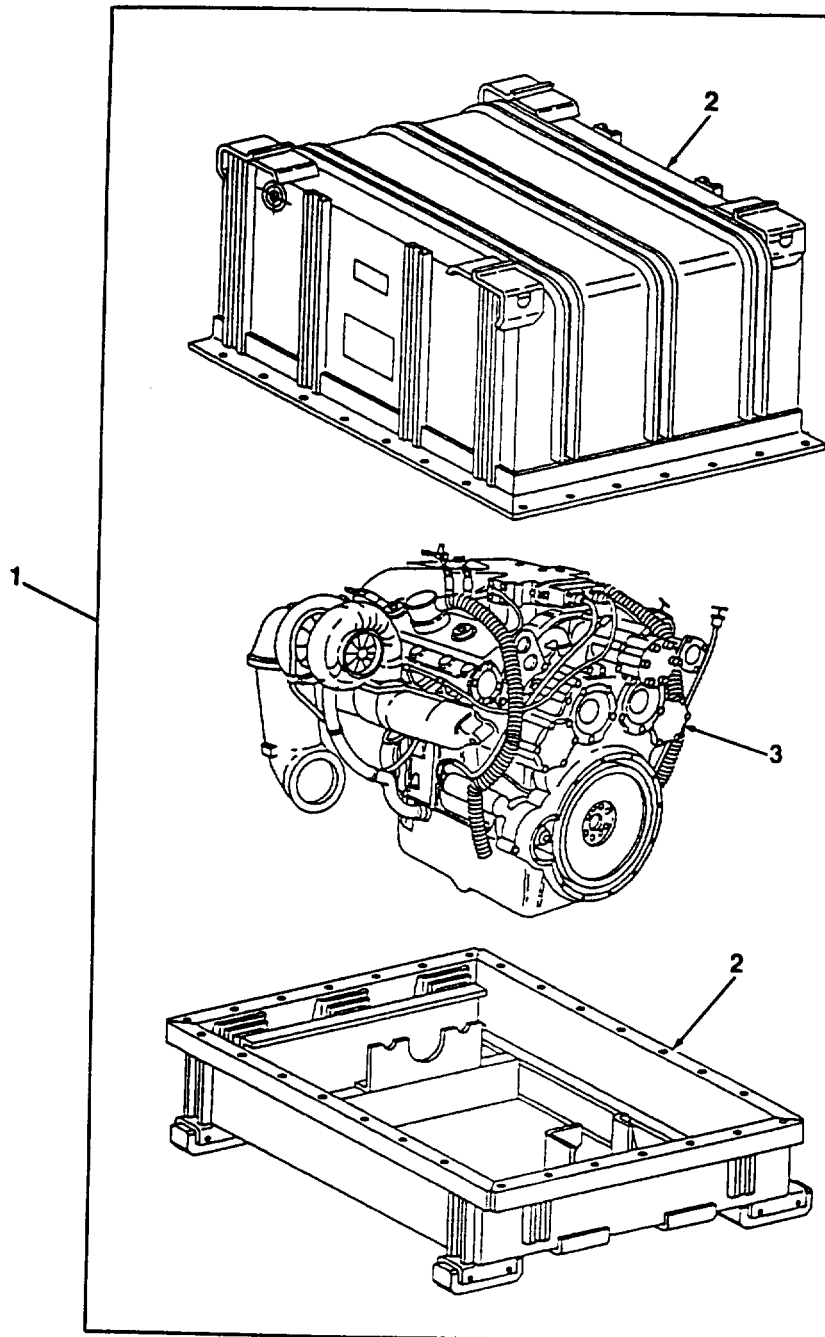


Figure 2. Engine (7083-7391) and Container Assembly

(1) ITEM NO	(2) SMR CODE	(3) CAGEC	(4) PART NUMBER	(5) DESCRIPTION AND USABLE ON CODES (UOC)	(6) QTY
				GROUP 0100 ENGINE ASSEMBLY FIG. 2 ENGINE (7083-7391) AND CONTAINER ASSEMBLY.	
1	PAFHD	19207	57K1003	ENGINE,DIESEL	1
2	PBFHD	19207	12268285	.SHIPPING AND STORAG	1
3	XAFHD	19207	12268500	.ENGINE,DIESEL	1

END OF FIGURE

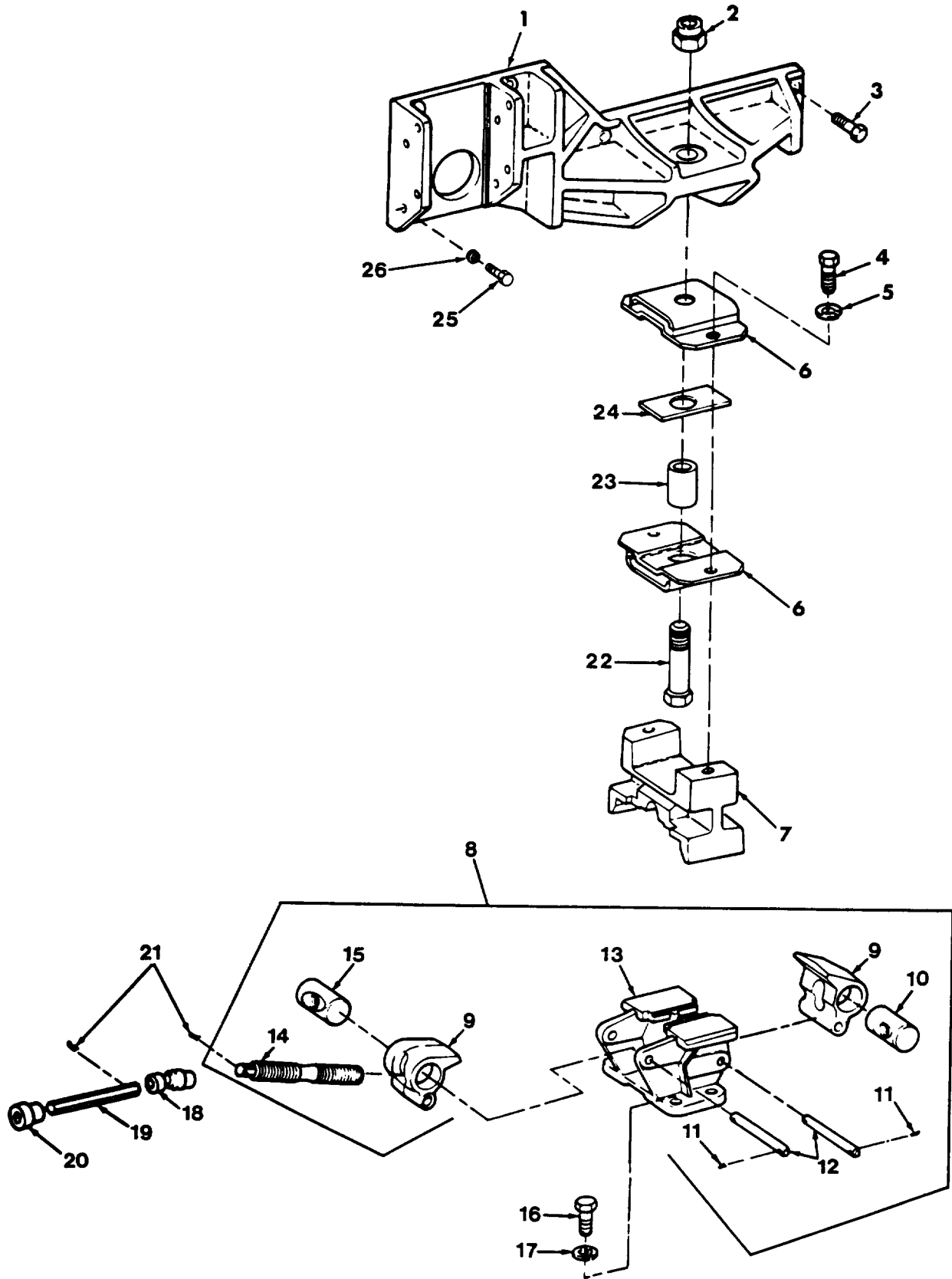


Figure 3. Engine Mounting Base Assembly 7527607, Mounts and Brackets

(1) ITEM NO	(2) SMR CODE	(3) CAGEC	(4) PART NUMBER	(5) DESCRIPTION AND USABLE ON CODES (UOC)	(6) QTY
FIG. 3 ENGINE MOUNTING BASE ASSEMBLY 7527607, MOUNTS AND BRACKETS.					
1	PAOZZ	19207	10922919	BRACKET,ENGINE ACCE	1
2	PAOZZ	96906	MS51922-68	NUT,SELF-LOCKING,HE	1
3	PAOZZ	19207	10930585	SCREW,SELF-LOCKING	8
4	PAOZZ	96906	MS90727-136	SCREW,CAP,HEXAGON H	2
5	PAOZZ	96906	MS35338-68	WASHER,LOCK	2
6	POOZZ	19207	10917096	MOUNT,RESILIENT	2
7	PAOZZ	19207	10922512	BRACKET,ENGINE MOUN	1
8	A0000	19207	7527607	BRACKET,MOUNTING	1
9	PAOZZ	19207	7525543	.JAW ENGINE MOUNTING	2
10	PAOZZ	19207	7525381	.NUT,PLAIN,BARREL	1
11	PAOZZ	96906	MS24665-353	.PIN,COTTER	4
12	PAOZZ	19207	7525465	.PIN,STRAIGHT,HEADLE	2
13	PAOZZ	19207	7527609	.BASE,ENGINE MOUNTIN	1
14	PAOZZ	19207	7525451	.TIE ROD,TENSIONING	1
15	PAOZZ	19207	7525380	.NUT,PLAIN,BARREL	1
16	PAOZZ	96906	MS90727-164	SCREW,CAP,HEXAGON H	4
17	PAOZZ	96906	MS35338-69	WASHER,LOCK	4
18	PAOZZ	19207	7971266	UNIVERSAL JOINT	1
19	PAOZZ	19207	10942227	BAR,LOWER,ENGINE MO	1
20	POOZZ	19207	10922511	BUSHING,NONMETALLIC	1
21	PAOZZ	96906	MS24665-497	PIN,COTTER	2
22	PAOZZ	96906	MS90727-219	SCREW,CAP,HEXAGON H	1
23	PAOZZ	19207	10922510	SPACER,SLEEVE	1
24	PAOZZ	19207	10936511	SPACER,PLATE	1
25	PAOZZ	80204	B1821BH038C150N	SCREW,CAP,HEXAGON H	3
26	PAOZZ	96906	MS35338-65	WASHER,LOCK	3

END OF FIGURE



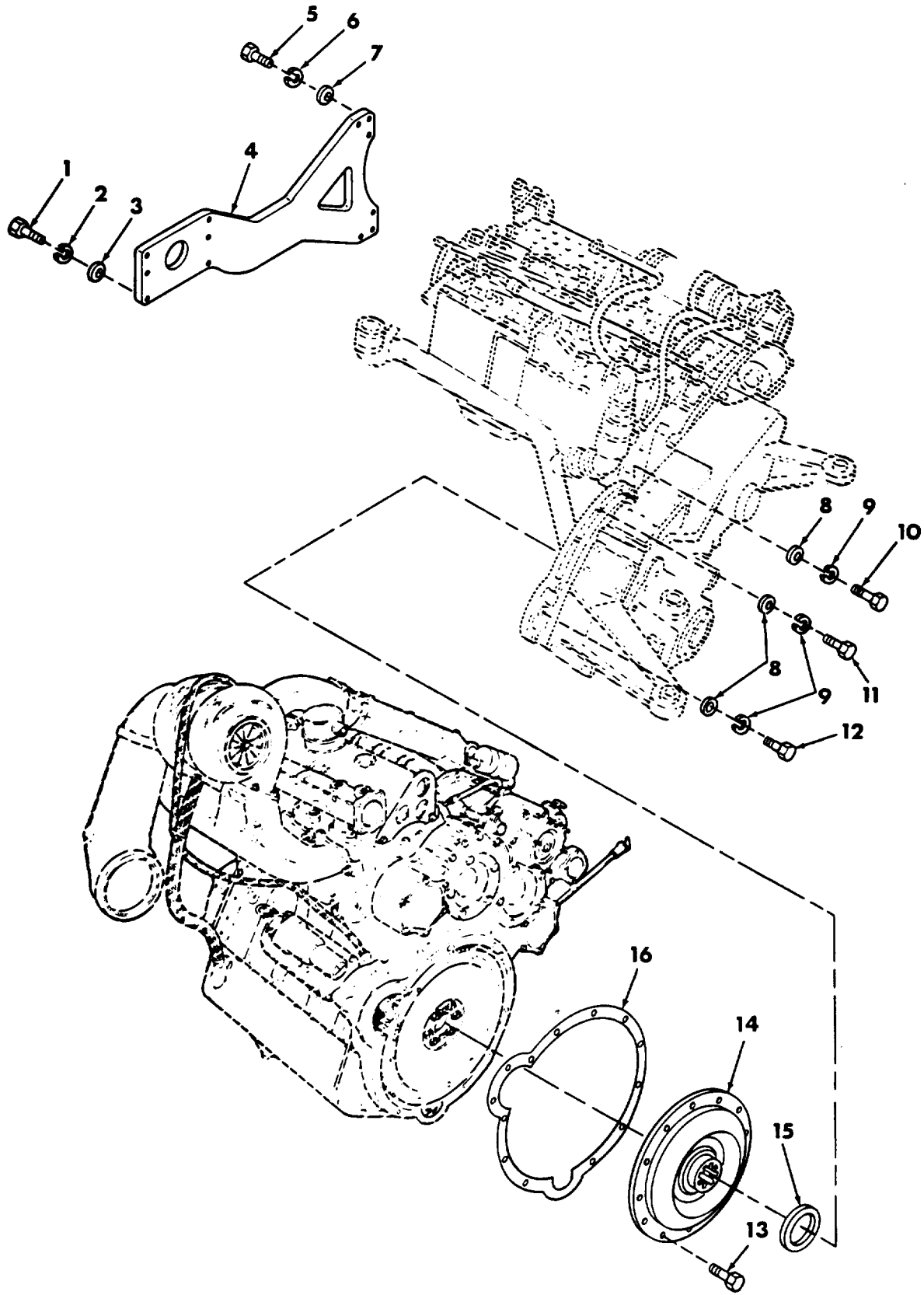


Figure 4. Engine Vibration Damper and Engine Transmission Support

(1) ITEM NO	(2) SMR CODE	(3) CAGEC	(4) PART NUMBER	(5) DESCRIPTION AND USABLE ON CODES (UOC)	(6) QTY
GROUP 0100 ENGINE ASSEMBLY.					
FIG. 4 ENGINE VIBRATION DAMPER AND ENGINE TRANSMISSION SUPPORT.					
1	PAFZZ	80204	B1821BH050C475N	SCREW,CAP,HEXAGON H	6
2	PAFZZ	96906	MS35338-67	WASHER,LOCK	6
3	PAFZZ	19200	10910174-5	WASHER,FLAT	6
4	PAFZZ	19207	10921177	BRACKET,MOUNTING	1
5	PAFZZ	80204	B1821BH063C175N	SCREW,CAP,HEXAGON H	6
6	PAFZZ	96906	MS35338-69	WASHER,LOCK	6
7	PAFZZ	19200	10910174-7	WASHER,FLAT	6
8	PAFZZ	19200	10910174-4	WASHER,FLAT	14
9	PAFZZ	96906	MS35338-66	WASHER,LOCK	14
10	PAFZZ	80204	B1821BH044C325N	SCREW,CAP,HEXAGON H	2
11	PAFZZ	80204	B1821BH044C150N	SCREW,CAP,HEXAGON H	9
12	PAFZZ	80204	B1821BH044C225N	SCREW,CAP,HEXAGON H	3
13	PAFZZ	96906	MS35764-1291	BOLT,SELF-LOCKING	12
14	PAFZZ	19207	11662761	COUPLING,SHAFT,FLEX	1
15	PAFZZ	81349	M83248-1-235	PACKING,PREFORMED	1
16	PAFZZ	19207	12289974	GASKET	1

END OF FIGURE