
TECHNICAL MANUAL

UNIT MAINTENANCE REPAIR PARTS AND SPECIAL TOOLS LIST

FOR

5-TON, 6X6, M809 SERIES TRUCKS

Model		NSN Without Winch	NSN With Winch
TRUCK, CHASSIS	M810	2320-00-051-0586	
TRUCK, CHASSIS	M810		2320-00-051-0585
TRUCK, CHASSIS, ROCKET LAUNCHER	M812A1		2320-00-050-9040
TRUCK, CARGO	M813	2320-00-050-8902	
TRUCK, CARGO	M813		2320-00-050-8890
TRUCK, CARGO	M813A1	2320-00-050-8913	
TRUCK, CARGO	M813A1		2320-00-050-8905
TRUCK, CARGO	M814	2320-00-050-8988	
TRUCK, CARGO	M814		2320-00-050-8987
TRUCK, BOLSTER LOGGING	M815		2320-00-050-8927
TRUCK, WRECKER, MEDIUM	M816		2320-00-051-0489
TRUCK, DUMP	M817	2320-00-050-8970	
TRUCK, DUMP	M817		2320-00-051-0589
TRUCK, TRACTOR	M818	2320-00-050-8984	
TRUCK, TRACTOR	M818		2320-00-050-8978
TRUCK, TRACTOR, WRECKER	M819		2320-00-050-9004
TRUCK, VAN, EXPANSIBLE	M820	2320-00-050-9006	
TRUCK, VAN, EXPANSIBLE	M820A1	2320-00-050-9007	
TRUCK, VAN, EXPANSIBLE	M820A2	2320-00-050-9010	
TRUCK, STAKE, BRIDGE TRANSPORTING	M821		2320-00-050-9015

•This manual supersedes TM 9-2320-260-20P, 8 November 1972

Approved for Public Release: Distribution is Unlimited.

HEADQUARTERS, DEPARTMENT OF THE ARMY MAY 1992

TECHNICAL MANUAL
NO. 9-2320-260-20P

TECHNICAL ORDER
NO. 36A12-1C-374

HEADQUARTERS
DEPARTMENT OF THE ARMY
Washington D. C., 8 May 1992

UNIT MAINTENANCE
REPAIR PARTS AND SPECIAL TOOLS LIST

Model		NSN Without Winch	NSN With Winch
TRUCK, CHASSIS	M810	2320-00-051-0586	
TRUCK, CHASSIS	M810		2320-00-051-0585
TRUCK, CHASSIS, ROCKET LAUNCHER	M812A1		2320-00-050-9040
TRUCK, CARGO	M813	2320-00-050-8902	
TRUCK, CARGO	M813		2320-00-050-8890
TRUCK, CARGO	M813A1	2320-00-050-8913	
TRUCK, CARGO	M813A1		2320-00-050-8905
TRUCK, CARGO	M814	2320-00-050-8988	
TRUCK, CARGO	M814		2320-00-050-8987
TRUCK, BOLSTER LOGGING	M815		2320-00-050-8927
TRUCK, WRECKER, MEDIUM	M816		2320-00-051-0489
TRUCK, DUMP	M817	2320-00-050-8970	
TRUCK, DUMP	M817		2320-00-051-0589
TRUCK, TRACTOR	M818	2320-00-050-8984	
TRUCK, TRACTOR	M818		2320-00-050-8978
TRUCK, TRACTOR, WRECKER	M819		2320-00-050-9004
TRUCK, VAN, EXPANSIBLE	M820	2320-00-050-9006	
TRUCK, VAN, EXPANSIBLE	M820A1	2320-00-050-9007	
TRUCK, VAN, EXPANSIBLE	M820A2	2320-00-050-9010	
TRUCK, STAKE, BRIDGE TRANSPORTING	M821		2320-00-050-9015

Current as of July 1991

REPORTING ERRORS AND RECOMMENDING IMPROVEMENTS

You can help improve this manual. If you find any mistakes or if you know of a way to improve the procedures, please let us know. Mail your letter, DA Form 2028 (Recommended Changes to Publications and Blank Forms), or DA Form 2028-2 located in the back of this manual direct to: Commander, U.S. Army Tank-Automotive Command, ATTN: AMSTA-MB, Warren, MI 48397-5000. A reply will be furnished to you.

Approved for Public Release: Distribution is Unlimited.

* This manual supersedes TM 9-2320-260-20P, 8 November 1972

TABLE OF CONTENTS

	PAGE	ILLUS FIG
SECTION I. INTRODUCTION	1	
SECTION II. REPAIR PARTS LIST	1-1	
GROUP 01 ENGINE		
0105 ROCKER LEVER HOUSING COVERS AND BREATHER	17-1	17
0106 LUBRICATING OIL FILTER	18-1	18
0106 ENGINE OIL SCAVENGER PUMP LINES AND FITTINGS	20-1	20
0106 OIL DIPSTICK AND TUBE	21-1	21
0106 OIL PAN, AERATOR, AND RELATED PARTS	22-1	22
0106 ENGINE DRAFT TUBE AND MOUNTING HARDWARE	23-1	23
GROUP 02 CLUTCH		
0200 CLUTCH ASSEMBLY, HOUSING, AND RELATED PARTS	28-1	28
0202 CLUTCH LINKAGE AND PEDAL	29-1	29
GROUP 03 FUEL SYSTEM		
0302 FUEL PUMP HOUSING, AFT	33-1	33
0304 AIR CLEANER INDICATOR AND RELATED PARTS	39-1	39
0304 AIR CLEANER ASSEMBLY	40-1	40
0306 FUEL CROSSOVER, DRAIN, AND BY-PASS TUBING	41-1	41
0306 FUEL TANK MOUNTING, SINGLE TANK, L. H. SIDE	42-1	42
0306 FUEL TANK MOUNTING, SINGLE TANK, R. H. SIDE	43-1	43
0306 DUAL FUEL TANK MOUNTING (622)	44-1	44
0306 DUAL FUEL TANK MOUNTING (623, 624, 627, 633, 634, 635)	45-1	45
0306 SINGLE FUEL TANK VENT LINES, L. H. SIDE	46-1	46
0306 SINGLE FUEL TANK SUPPLY AND RETURN LINES, L.H.SIDE	47-1	47
0306 SINGLE FUEL TANK VENT LINES, R. H. SIDE	48-1	48
0306 SINGLE FUEL TANK SUPPLY AND RETURN LINES, R.H.SIDE	49-1	49
0306 SINGLE FUEL TANK SUPPLY LINE, R. H. SIDE	50-1	50
0306 SINGLE FUEL TANK RETURN LINE, R. H. SIDE	51-1	51
0306 DUAL FUEL TANK VENT LINES	52-1	52
0306 DUAL FUEL TANK FRONT SUPPLY AND RETURN LINES	53-1	53
0306 DUAL FUEL TANK SUPPLY AND RETURN LINES, L.H.SIDE	54-1	54
0306 DUAL FUEL TANK SUPPLY AND RETURN LINES, R.H.SIDE	55-1	55
0306 DUAL FUEL TANK SUPPLY AND RETURN LINES, L.H.SIDE	56-1	56
0306 DUAL FUEL TANK SUPPLY AND RETURN LINES, R.H.SIDE	57-1	57
0306 FUEL TANK SELECTOR VALVE ASSEMBLY	58-1	58
0306 FUEL TANK ASSEMBLIES	59-1	59
0306 FUEL TANK PROTECTOR PLATE AND MOUNTING HARDWARE	60-1	60

TABLE OF CONTENTS (CONT.)

	PAGE	ILLUS FIG
0308 FUEL PUMP UPPER SPRING PACK, VS	65-1	65
0308 FUEL PUMP GOVERNOR AND MOUNTING HARDWARE . . .	66-1	66
0309 FUEL FILTER, WATER SEPARATOR ASSEMBLY, AND MOUNTING HARDWARE	71-1	71
0309 FUEL PUMP FILTER,AFC	72-1	72
0309 FUEL PUMP FILTER, VS	73-1	73
0309 FUEL PUMP FILTER,MVS	74-1	74
0311 GLOW PLUG, INJECTOR NOZZLE, AND COLD START INDICATOR LAMP	75-1	75
0311 COLD START PUMPAND PIPING...	76-1	76
0311 COLD START SWITCH AND GAGE.	77-1	77
0311 COLD START RESISTER AND RELAY	78-1	78
0312 ACCELERATOR CONTROL AND LINKAGE	79-1	79
 GROUP 04 EXHAUST SYSTEM		
0401 VERTICAL EXHAUST SYSTEM	80-1	80
0401 HORIZONTAL EXHAUST SYSTEM	81-1	81
 GROUP 05 COOLING SYSTEM		
0501 RADIATOR HOSES AND MOUNTING HARDWARE	82-1	82
0501 RADIATOR ASSEMBLY	83-1	83
0501 SURGE TANK ASSEMBLY, HOSES, AND MOUNTING HARDWARE	84-1	84
0502 FAN SHROUD, BAFFLES, AND SHIELDS	85-1	85
0503 THERMOSTAT, HOUSING, SEAL, AND MOUNTING HARDWARE	86-1	86
0503 WATER MANIFOLD, COVER, AND MOUNTING HARDWARE	87-1	87
0504 WATER PUMP ASSEMBLY, SEALS, BELT, AND MOUNTING HARDWARE	89-1	89
0505 FAN, BRACKET, HUB ASSEMBLY, BELTS, AND MOUNTING HARDWARE	90-1	90
 GROUP 06 ELECTRICAL SYSTEM		
0601 ALTERNATOR ASSEMBLY, BELTS, PULLEYS, AND MOUNTING HARDWARE	91-1	91
0603 STARTER MOTOR ASSEMBLY AND MOUNTING HARDWARE	92-1	92
0606 OIL PRESSURE LOCKOUT SWITCH, SHUTDOWN VALVE ASSEMBLY,AND MOUNTING HARDWARE	93-1	93
0607 INSTRUMENT PANEL, IGNITION, LIGHT, AUXILIARY SWITCHES, AND MOUNTING HARDWARE	94-1	94
0607 FUEL GAGE AND AUXILIARY FUEL SWITCHES	95-1	95
0607 INSTRUMENT CLUSTER ASSEMBLY	96-1	96
0607 CIRCUIT BREAKERS	97-1	97

TABLE OF CONTENTS (CONT.)

	PAGE	ILLUS FIG
0607	AUXILIARY POWER RECEPTACLE ASSEMBLY	98-1 98
0608	CONTROL UNIT AND DIRECTIONAL FLASHER	99-1 99
0608	PROTECTIVE CONTROL BOX, HIGH BEAM SWITCH, AND MOUNTING HARDWARE	100-1 100
0608	BRAKE LOCK AND WARNING FLASHER	101-1 101
0608	FLOODLIGHT SWITCH	102-1 102
0609	TAILLIGHT ASSEMBLY AND MOUNTING HARDWARE	103-1 103
0609	FRONT COMPOSITE LIGHT AND MOUNTING BRACKETS .	104-1 104
0609	BLACKOUT LAMP AND HEADLIGHT	105-1 105
0609	WARNING SIGNAL LAMP ASSEMBLY AND MOUNTING BRACKETS	106-1 106
0609	TAILLIGHT BRACKETS AND MOUNTING HARDWARE	107-1 107
0609	SIDE MARKER LIGHT ASSEMBLY	108-1 108
0609	FLOODLIGHT ASSEMBLY	109-1 109
0610	TEMPERATURE TRANSMITTER, WARNING LIGHT, PRESSURE SWITCHES, LOW AIR-PRESSURE BUZZER, AND FUEL LEVEL TRANSMITTER	110-1 110
0611	HORN ASSEMBLY AND MOUNTING HARDWARE	111-1 111
0611	HORN BUTTON ASSEMBLY	112-1 112
0611	HORN COVER ASSEMBLY, BRUSH, AND RELATED PARTS	113-1 113
0612	BATTERIES, CABLES, AND TERMINAL CLAMPS	114-1 114
0612	BATTERY BOX ASSEMBLY, COVER, AND MOUNTING HARDWARE	115-1 115
0612	SLAVE RECEPTACLE AND MOUNTING HARDWARE	116-1 116
0613	FRONT WIRING HARNESS-PARTIAL VIEW	118-1 118
0613	FRONT WIRING HARNESS-PARTIAL VIEW	119-1 119
0613	FRONT WIRING HARNESS-PARTIAL VIEW	120-1 120
0613	REAR WIRING HARNESS, WRECKER (SHEET 1 OF 2)	121-1 121
0613	REAR WIRING HARNESS, WRECKER (SHEET 2 OF 2)	121-1 121
0613	REAR WIRING HARNESS, BRIDGE TRANSPORT (SHEET 1 OF 2)	122-1 122
0613	REAR WIRING HARNESS, CHASSIS (SHEET 1 OF 2)	123-1 123
0613	REAR WIRING HARNESS, VAN (SHEET 1 OF 2)	124-1 124
0613	REAR WIRING HARNESS, DUMP (SHEET 1 OF 2)	125-1 125
0613	REAR WIRING HARNESS, TRACTOR (SHEET 1 OF 2)	126-1 126
0613	REAR WIRING HARNESS, CARGO (SHEET 1 OF 2)	127-1 127
0613	REAR WIRING HARNESS, BOLSTER LOGGER AND CARGO (SHEET 1 OF 2)	128-1 128
0613	REAR WIRING HARNESS, TRACTOR WRECKER (SHEET 1 OF 2)	129-1 129
0613	REAR WIRING HARNESS, CHASSIS (SHEET 1 OF 2)	130-1 130
0613	ACCESSORY WIRING HARNESS, WRECKER	131-1 131
0613	INTERVEHICULAR WIRING HARNESS ASSEMBLY	132-1 132
0613	WRECKER CRANE WIRING LEADS AND HARNESS	133-1 133

TABLE OF CONTENTS (CONT.)

	PAGE	ILLUS FIG
GROUP 07	TRANSMISSION	
	0700 TRANSMISSION CASE AND RELATED PARTS	135-1 135
	0704 TRANSMISSION GEAR SHIFT LEVER ASSEMBLY	140-1 140
GROUP 08	TRANSFER CASE	
	0803 TRANSFER DECLUTCH PIPING	149-1 149
	0803 TRANSFER TRANSMISSION CONTROLS	150-1 150
GROUP 09	PROPELLER SHAFTS	
	0900 PROPELLER SHAFT ASSEMBLY, FRONT AXLE TO TRANSFER SHAFT, AND FORWARD-REAR AXLE TO REAR-REAR AXLE (DANA) (SHEET 1 OF 2)	151-1 151
	0900 PROPELLER SHAFT ASSEMBLY, TRANSMISSION TO TRANSFER SHAFT (DANA) (SHEET 1 OF 2)	152-1 152
	0900 PROPELLER SHAFT ASSEMBLY, TRANSFER TO CENTER BEARING AND CENTER BEARING ASSEMBLY (DANA) (SHEET 1 OF 2)	153-1 153
	0900 PROPELLER SHAFT ASSEMBLY, TRANSFER TO FORWARD-REAR AXLE AND CENTER BEARING TO FORWARD-REAR AXLE (DANA) (SHEET 1 OF 2)	154-1 154
GROUP 10	FRONT AXLE	
	1000 FRONT AXLE ASSEMBLY AND AXLE HOUSING ASSEMBLY	155-1 155
	1004 SPINDLE SHAFT ASSEMBLY, UNIVERSAL SHAFT, AND KNUCKLE ASSEMBLY	160-1 160
GROUP 11	REAR AXLE	
	1100 REAR AXLE ASSEMBLY AND AXLE HOUSING ASSEMBLY	161-1 161
GROUP 12	BRAKES	
	1201 PARKING BRAKE LEVER ASSEMBLY AND MOUNTING HARDWARE	166-1 166
	1201 PARKING BRAKE CABLE AND MOUNTING HARDWARE	167-1 167
	1201 PARKING BRAKE SHOE ASSEMBLY, DRUM, DUST SHIELD, AND RELATED PARTS	168-1 168
	1202 SERVICE BRAKES, FRONT AND REAR	169-1 169
	1202 SERVICE BRAKE MOUNTING PLATE ASSEMBLY	170-1 170
	1204 FRONT AXLE SERVICE BRAKE HYDRAULIC LINES AND MOUNTING HARDWARE	171-1 171
	1204 CENTER SERVICE BRAKE HYDRAULIC LINE AND MOUNTING HARDWARE	172-1 172

TABLE OF CONTENTS (CONT.)		PAGE	ILLUS FIG
1204	CENTER SERVICE BRAKE HYDRAULIC LINE AND MOUNTING HARDWARE	173-1	173
1204	CENTER SERVICE BRAKE HYDRAULIC LINE AND MOUNTING HARDWARE (621)	174-1	174
1204	CENTER SERVICE BRAKE HYDRAULIC LINE AND MOUNTING HARDWARE (622, 636)	175-1	175
1204	REAR AXLE SERVICE BRAKE HYDRAULIC LINE AND MOUNTING HARDWARE	176-1	176
1204	AIR PACK AND CYLINDER ASSEMBLY WITH DRAIN TUBE	177-1	177
1204	AIR PACK MOUNTING HARDWARE	178-1	178
1204	AIR PACK ASSEMBLY	179-1	179
1204	HYDRAULIC BRAKE MASTER CYLINDER, WHEEL CYLINDER, AND MOUNTING HARDWARE	180-1	180
1206	BRAKE PEDAL ASSEMBLY AND LINKAGE	181-1	181
1208	FRONT SERVICE AIR LINE, HALF COUPLING, AND FITTINGS	182-1	182
1208	FRONT EMERGENCY AIR LINE, HALF COUPLING, AND FITTINGS	183-1	183
1208	EMERGENCY AIR SUPPLY LINE, LEFT SIDE (634, 635, 636)	184-1	184
1208	EMERGENCY AIR SUPPLY LINE, LEFT SIDE	185-1	185
1208	SERVICE AIR SUPPLY LINES, AIR COMPRESSOR TO AIR PACK	186-1	186
1208	AIR MANIFOLD, BREATHER VALVE, AND WINDSHIELD WIPER AIR SUPPLY	187-1	187
1208	AIR SUPPLY LINES, DOUBLE CHECK VALVE TO AIR PACK	188-1	188
1208	AIR SUPPLY LINES, DOUBLE CHECK VALVE TO AIR PACK (634, 635, 636)	189-1	189
1208	AIR SUPPLY LINES, AIR RESERVOIR TO TRANSFER DECLUTCH LINE	190-1	190
1208	AIR SUPPLY LINES, AIR RESERVOIR TO TRANSFER DECLUTCH LINE (621)	191-1	191
1208	AIR SUPPLY LINES, AIR RESERVOIR TO TRANSFER DECLUTCH LINE (622, 636)	192-1	192
1208	AIR SUPPLY LINES, AIR RESERVOIR TO TRANSFER DECLUTCH LINE (634, 635)	193-1	193
1208	SERVICE AND EMERGENCY AIR LINES, CENTER, AND MOUNTING HARDWARE	194-1	194
1208	SERVICE AND EMERGENCY AIR LINES, CENTER, AND MOUNTING HARDWARE	195-1	195
1208	SERVICE AND EMERGENCY AIR LINES, CENTER, AND MOUNTING HARDWARE (622)	196-1	196
1208	SERVICE AND EMERGENCY AIR LINES, CENTER, AND MOUNTING HARDWARE (634, 635)	197-1	197
1208	SERVICE, EMERGENCY, AND CROSSOVER AIR LINES, CENTER, AND MOUNTING HARDWARE	198-1	198
1208	REAR EMERGENCY HALF COUPLING AND AIRLINE	199-1	199

TABLE OF CONTENTS (CONT.)

	PAGE	ILLUS FIG
1208 REAR SERVICE HALF COUPLING AND AIR LINE	200-1	200
1208 REAR EMERGENCY HALF COUPLING AND AIR LINE	201-1	201
1208 REAR SERVICE HALF COUPLING AND AIR LINE	202-1	202
1208 REAR EMERGENCY HALF COUPLING AND AIR LINE	203-1	203
1208 REAR SERVICE HALF COUPLING AND AIR LINE	204-1	204
1208 AIR RESERVOIR ASSEMBLY AND MOUNTING HARDWARE	205-1	205
1209 AIR COMPRESSOR GOVERNOR AND RELATED PARTS	207-1	207
1211 TRAILER BRAKE CONTROL VALVE, ASSOCIATED LINES, AND FITINGS	208-1	208
1211 TRAILER BRAKE EMERGENCY COUPLINGS AND ASSOCIATED AIR LINES	209-1	209
 GROUP 13 WHEELS		
1311 WHEEL ASSEMBLY	210-1	210
1311 FRONT WHEEL HUB AND DRUM ASSEMBLY	211-1	211
1311 FRONT WHEEL HUB AND DRUM CONVERSION	212-1	212
1311 REAR WHEEL HUB AND DRUM ASSEMBLY	213-1	213
1313 TIRE AND TUBE ASSEMBLY	214-1	214
 GROUP 14 STEERING		
1401 STEERING COLUMN, WHEEL, AND PROPELLER SHAFT	215-1	215
1401 DRAG LINK AND PITMAN ARM ASSEMBLY	216-1	216
1401 CROSS-SHAFT AND TIE ROD ASSEMBLY	217-1	217
1410 POWER STEERING PUMP ASSEMBLY, PULLEY ASSEMBLY, BELTS, AND MOUNTING HARDWARE	219-1	219
1411 HYDRAULIC LINES AND FITINGS, POWER STEERING PUMP TO STEERING GEAR	220-1	220
1411 HYDRAULIC LINES AND FITTINGS, STEERING CYLINDER TO STEERING GEAR	221-1	221
1412 TIE ROD END AND STEERING CYLINDER ASSEMBLY	222-1	222
 GROUP 15 FRAME AND TOWING ATTACHMENTS		
1501 VEHICLE TIEDOWN	232-1	232
1501 FRONT BUMPER, LIFTING SHACKLE, STEP, AND MOUNTING HARDWARE	233-1	233
1501 REAR BUMPERETTE AND SHACKLE ASSEMBLY	234-1	234
1501 FRONT AND REAR FIELD CHOCK ANCHORS	235-1	235
1503 PINTLE HOOK ASSEMBLY	236-1	236
1503 TOWING PINTLE MOUNTING BRACKETS	237-1	237
1503 TOWING PINTLE MOUNTING BRACKETS, TRACTOR	238-1	238
1503 TOWING PINTLE MOUNTING BRACKETS, DUMP	239-1	239
1503 TOWING PINTLE MOUNTING BRACKETS, WRECKER	240-1	240
1504 SPARE TIRE CARRIER, VAN	241-1	241

TABLE OF CONTENTS (CONT.)

	PAGE	ILLUS FIG
1504 SPARE TIRE CARRIER, DUMP	242-1	242
1504 SPARE TIRE CARRIER, TRACTOR	243-1	243
1504 SPARE TIRE CARRIER, BOLSTER LOGGER	244-1	244
1504 SPARE TIRE CARRIER, CARGO	245-1	245
1504 SPARE TIRE MOUNTING PARTS, CARGO	246-1	246
1504 SPARE TIRE CARRIER, WRECKER	247-1	247
1506 FIFTH WHEEL MOUNTING AND RELATED PARTS	248-1	248
1506 FIFTH WHEEL ASSEMBLY, BASIC (SHEET 1 OF 2)	249-1	249
GROUP 16	SPRINGS AND SHOCK ABSORBERS	
1601	FRONT LEAF SPRING ASSEMBLY AND RELATED PARTS	251-1 251
1601	REAR LEAF SPRING MOUNTING HARDWARE	252-1 252
1601	REAR LEAF SPRING AND SEAT ASSEMBLIES	253-1 253
1604	SHOCK ABSORBER AND MOUNTING HARDWARE	254-1 254
1605	TORQUE RODS AND MOUNTING HARDWARE	255-1 255
GROUP 18	BODY, CAB, AND HOOD	
1801	HOOD ASSEMBLY AND RELATED PARTS	256-1 256
1801	STONE AND BRUSH GUARD ASSEMBLIES AND MOUNTING HARDWARE	257-1 257
1801	HOOD SIDE PANEL AND HEADLIGHT BRACKET, LEFT SIDE	258-1 258
1801	HOOD SIDE PANEL AND HEADLIGHT BRACKET, RIGHT SIDE	259-1 259
1801	CAB BODY ASSEMBLY AND RELATED PARTS	261-1 261
1801	CAB REINFORCEMENT PANEL, MACHINE GUN MOUNT BRACKETS, AND RELATED PARTS	262-1 262
1801	DOOR, CAB ASSEMBLY	263-1 263
1801	WINDOW FRAME ASSEMBLY, CAB DOOR	264-1 264
1802	FENDER ASSEMBLY, SUPPORT, AND MOUNTING HARDWARE, LEFT SIDE	265-1 265
1802	FENDER ASSEMBLY, SUPPORT, AND MOUNTING HARDWARE, RIGHT SIDE	266-1 266
1802	WINDSHIELD ASSEMBLY AND MOUNTING HARDWARE	267-1 267
1802	WINDSHIELD AND FRAME ASSEMBLIES	268-1 268
1802	RUNNING BOARD, LEFT SIDE	269-1 269
1802	RUNNING BOARD, RIGHT SIDE	270-1 270
1802	REAR WHEEL SPLASH GUARDS	271-1 271
1805	CAB FLOOR TUNNEL AND MOUNTING HARDWARE	272-1 272
1806	OPERATOR'S SEAT ASSEMBLY	273-1 273
1806	COMPANION SEAT ASSEMBLY	274-1 274
1808	MAP COMPARTMENT, DOOR ASSEMBLY, AND MOUNTING HARDWARE	275-1 275
1808	TOOL BOX ASSEMBLY AND MOUNTING HARDWARE	276-1 276

TABLE OF CONTENTS (CONT.)

	PAGE	ILLUS FIG
1808 TOOL BOX ASSEMBLY AND MOUNTING HARDWARE (625, 626, 628, 629, 637, 638)277-1	277
1808 TOOL BOX ASSEMBLY AND MOUNTING HARDWARE (627, 633, 634, 635)278-1	278
1808 PIONEER TOOL BRACKET AND MOUNTING HARDWARE .	279-1	279
1808 TOOL FRAME ASSEMBLY, PIONEER TOOLS	280-1	280
1808 VAN CABLE REEL, CABLE, AND MOUNTING HARDWARE (630, 632)281-1	281
1808 VAN CABLE REEL, CABLE, AND MOUNTING HARDWARE (631)282-1	282
1810 CARGO AND DROPSIDE CARGO BODIES, AND MOUNTING HARDWARE283-1	283
1810 CARGO BODY, LONG WHEELBASE, AND MOUNTING HARDWARE284-1	284
1810 CARGO BODY ASSEMBLY, BASIC, SIDE RACKS, TAILGATE ASSEMBLY, AND RELATED PARTS285-1	285
1810 CARGO BODY SIDE RACK, GATE ASSEMBLY, AND TROOP SEATS286-1	286
1810 CARGO BODY ASSEMBLY, SIDE GATES, TAILGATE, AND RELATED PARTS, BASIC AND DROPSIDE287-1	287
1810 CARGO BODY SIDE PERSONNEL SEAT ASSEMBLY, RACK AND GATE ASSEMBLIES, DROPSIDE288-1	288
1810 CARGO BODY, TAILGATE AND SIDE RACK ASSEMBLIES, LONG WHEELBASE289-1	289
1810 CARGO BODY RACK ASSEMBLIES AND TROOP SEATS, LONG WHEELBASE290-1	290
1810 CARGO BODY SPLASH GUARD ASSEMBLY AND RELATED PARTS291-1	291
1810 DUMP BODY, HOIST ASSEMBLY, CAB SHIELD, AND MOUNTING HARDWARE292-1	292
1810 DUMP BODY, BASIC, TAILGATE, AND RELATED PARTS. .	293-1	293
1810 DUMP TAILGATE CONTROLS, SAFETY CATCH, AND RELATED PARTS294-1	294
1810 DUMP SPLASH GUARD ASSEMBLY AND RELATED PARTS295-1	295
1812 VAN BODY ASSEMBLY AND MOUNTING HARDWARE (630, 632)296-1	296
1812 VAN BODY ASSEMBLY AND MOUNTING HARDWARE (631)297-1	297
1812 VAN SPLASH GUARD ASSEMBLIES298-1	298
1812 VAN SIDE LOCK HANDLE, LIFTING BRACKETS, ROD RETAINER, AND RELATED PARTS.299-1	299
1812 VAN REAR WALL PANELS AND MOUNTING HARDWARE (630, 632)300-1	300
1812 VAN REAR WALL PANELS AND MOUNTING HARDWARE (631)301-1	301

TABLE OF CONTENTS (CONT.)

	PAGE	ILLUS FIG
1812 VAN HINGED END PANEL ASSEMBLIES AND RELATED PARTS	302-1	302
1812 VAN DOOR ASSEMBLY, LEFT REAR (630, 632)	303-1	303
1812 VAN DOOR ASSEMBLY, LEFTREAR (631)	304-1	304
1812 VAN DOOR ASSEMBLY, RIGHT REAR (630, 632)	305-1	305
1812 VAN DOOR ASSEMBLY, RIGHT REAR (631)	306-1	306
1812 VAN SASH ASSEMBLY, REAR DOORS	307-1	307
1812 VAN RETRACTABLE BEAMS, RATCHET SHAFT, AND ROLLERS	310-1	310
1812 VAN HINGED FLOOR ASSEMBLY (630, 632)	311-1	311
1812 VAN HINGED FLOOR ASSEMBLY (631)	312-1	312
1812 VAN COUNTERBALANCE AND MOUNTING HARDWARE	313-1	313
1812 VAN SIDE PANEL DOOR CHECKS, INTERIOR LATCH ASSEMBLIES, AND RELATED PARTS, RIGHT TO LEFT SIDE (630, 632)	318-1	318
1812 VAN SIDE PANEL DOOR CHECKS, INTERIOR LATCH ASSEMBLIES, AND RELATED PARTS, RIGHT AND LEFT SIDE (631)	319-1	319
1812 VAN RETRACTABLE WINDOW SASH ASSEMBLY AND RELATED PARTS, RIGHT AND LEFT SIDE	320-1	320
1812 VAN DOOR ASSEMBLIES, RIGHT AND LEFT SIDE (630, 632)	321-1	321
1812 VAN AIR CONDITIONING DUCT AND RELATED PARTS (630, 632)	325-1	325
1812 VAN HINGED ROOF ASSEMBLY, LATCH, AND RELATED PARTS, RIGHT AND LEFT SIDE.....	326-1	326
1812 VAN HINGED ROOF ASSEMBLY, HOLDER ASSEMBLIES, PANELS, AND RELATED PARTS	327-1	327
1812 VAN FRONT WALL AND FIRE EXTINGUISHER BRACKET	328-1	328
1812 VAN HEATER FUEL PUMP, COVER, LINES AND FITTINGS	329-1	329
1812 VAN HEATER, EXHAUST, AND VENT DOOR CONTROLS	331-1	331
1812 VAN AIR CONDITIONER, DRAIN TUBE, AND MOUNTING HARDWARE	332-1	332
1812 VAN ACCESS DOOR ASSEMBLY	333-1	333
1812 VAN HEATER THERMOSTATIC SWITCH AND FLUORESCENT STARTER	352-1	352
1812 VAN TELEPHONE JACK AND RELATED PARTS, INTERIOR AND EXTERIOR	353-1	353
1812 VAN HINGED ROOF PLUNGER AND BLACKOUT LIGHT SWITCH	354-1	354
1812 VAN 3-PHASE AND 400Hz RECEPTACLES	355-1	355
1812 VAN CEILING SWITCH, FRONT WALL SWITCH, RECEPTACLE ASSEMBLY, AND RELATED PARTS	356-1	356
1812 VAN BLACKOUT AND EMERGENCY SWITCHES, AND RELATED PARTS	357-1	357
1812 VAN BLACKOUT AND EMERGENCY LAMPS, INTERIOR	358-1	358

TABLE OF CONTENTS (CONT.)

	PAGE	ILLUS FIG
1812 VAN CEILING LAMP FIXTURES AND BULB	359-1	359
1812 WRECKER CRANE BODY ASSEMBLY AND MOUNTING HARDWARE	360-1	360
1812 WRECKER BODY ASSEMBLY	361-1	361
1812 WRECKER OUTRIGGER JACK ASSEMBLY AND RELATED PARTS	362-1	362
1812 WRECKER FUEL CAN BRACKET, FIRE EXTINGUISHER BRACKET, AND VISE MOUNTING	363-1	363
1812 WRECKER SPLASH GUARDS	364-1	364
1812 TRACTOR WRECKER BODY ASSEMBLY AND MOUNTING HARDWARE	365-1	365
1812 TRACTOR WRECKER BODY, FENDERS, SPLASH GUARDS, AND RELATED PARTS	366-1	366
1812 TRACTOR WRECKER CRANE OUTRIGGER AND JACK ASSEMBLY	367-1	367
1812 TRACTOR WRECKER EMERGENCY AND SERVICE AIR LINES, COUPLINGS, AND HITCH HIKER	368-1	368
1812 BOLSTER LOGGER CAB PROTECTOR ASSEMBLY, BOLSTER ASSEMBLY, AND MOUNTING HARDWARE	370-1	370
1812 BOLSTER LOGGER FIFTH WHEEL ASSEMBLY AND MOUNTING HARDWARE	371-1	371
1812 BOLSTER LOGGER TRAILER CARRIER ASSEMBLY AND RAMPS	372-1	372
GROUP 20 HOIST, WINCH, CRANE, AND POWER TAKEOFF		
2001 FRONT WINCH BRACKETS AND MOUNTING HARDWARE	373-1	373
2001 FRONT WINCH ASSEMBLY, COMPLETE AND WIRE ROPE ASSEMBLY, WRECKER AND BOLSTER LOGGER	374-1	374
2001 FRONT WINCH ASSEMBLY, COMPLETE AND WIRE ROPE ASSEMBLY	375-1	375
2001 FRONT WINCH TENSIONER ASSEMBLY, ROLLER ASSEMBLY, AND RELATED PARTS	377-1	377
2001 FRONT WINCH PROPELLER DRIVE SHAFT ASSEMBLY	378-1	378
2001 BOLSTER LOGGER MIDWINCH AND WIRE ROPE ASSEMBLY	379-1	379
2001 WINCH ASSEMBLY, BASIC, DRUM, AND RELATED PARTS	380-1	380
2001 HAND WINCH ASSEMBLY AND WIRE ROPE ASSEMBLY, SIDE	381-1	381
2001 WRECKER REAR WINCH ASSEMBLY COMPLETE AND WIRE ROPE ASSEMBLY	382-1	382
2001 WRECKER REAR WINCH SHEAVE SWIVEL AND TROLLEY ASSEMBLY	383-1	383
2001 WRECKER REAR WINCH CABLE TENSIONER	384-1	384
2001 WRECKER REAR WINCH ASSEMBLY, BASIC	385-1	385

TABLE OF CONTENTS (CONT.)

	PAGE	ILLUS FIG
2001 WRECKER REAR WINCH DRIVE SHAFT, BEARING ASSEMBLY, AND CHAIN	386-1	386
2001 WRECKER REAR WINCH CONTROLS AND WINCH BRAKE ASSEMBLY	387-1	387
2001 WRECKER WINCH AND CRANE CONTROLS	388-1	388
2001 DUMP HYDRAULIC HOIST ASSEMBLY	389-1	389
2001 DUMP HOIST SAFETY LATCH ASSEMBLY, HOSES, AND FILTER	390-1	390
2001 DUMP HOIST CONTROL BOX ASSEMBLY	392-1	392
2001 DUMP CONTROLS AND MOUNTING HARDWARE	394-1	394
2001 DUMP CONTROL CONNECTING LINKS	395-1	395
2001 DUMP HOIST PROPELLER DRIVE SHAFT ASSEMBLY	396-1	396
2001 WRECKER CRANE GONDOLA ASSEMBLY	397-1	397
2001 WRECKER CRANE TURNTABLE ASSEMBLY	398-1	398
2001 WRECKER CRANE BOOM ELEVATING CYLINDER ASSEMBLY	400-1	400
2001 WRECKER SHEAVE AND OPERATOR GUARD	401-1	401
2001 WRECKER BOOM ASSEMBLY	402-1	402
2001 WRECKER INNER BOOM EXTENSION ASSEMBLY	403-1	403
2001 WRECKER INNER BOOM EXTENSION CYLINDER ASSEMBLY	404-1	404
2001 CRANE HOIST WINCH AND MOUNTING HARDWARE	405-1	405
2001 CRANE BOOM HOIST WINCH ASSEMBLY	406-1	406
2001 WRECKER TACKLE BLOCK AND WIRE ROPE ASSEMBLY	408-1	408
2001 WRECKER HOIST DRIVE AND HOIST SHAFT ASSEMBLIES	409-1	409
2001 WRECKER HOIST GEAR CASE ASSEMBLY	410-1	410
2001 WRECKER GONDOLA HOIST CONTROL VALVE ASSEMBLY	411-1	411
2001 WRECKER CONTROL VALVE HYDRAULIC HOSES, LINES, AND FITTINGS	412-1	412
2001 WRECKER HYDRAULIC HOSES, LINES, AND FITTINGS	413-1	413
2001 WRECKER HYDRAULIC OIL TANK ASSEMBLY AND MOUNTING HARDWARE	414-1	414
2001 WRECKER HYDRAULIC FLUID FILTER ASSEMBLY	415-1	415
2001 WRECKER REAR WINCH VERTICAL ROLLER AND MOUNTING HARDWARE	416-1	416
2001 WRECKER REAR WINCH HORIZONTAL ROLLER AND MOUNTING HARDWARE	417-1	417
2001 WRECKER THROTTLE CONTROL LEVER, CABLE, AND RELATED PARTS	418-1	418
2001 TRACTOR WRECKER BOOM SWING MECHANISM	420-1	420
2001 TRACTOR WRECKER HYDRAULIC VANE PUMP AND RELATED PARTS	421-1	421
2001 TRACTOR WRECKER SWIVEL ASSEMBLY, PIVOT POST, AND SHIPPER SUPPORT	423-1	423
2001 TRACTOR WRECKER PIVOT POST SUPPORT, BASE, AND RELATED PARTS	424-1	424

TABLE OF CONTENTS (CONT.)

	PAGE	ILLUS FIG
2001 TRACTOR WRECKER BOOM LIFT CYLINDER	425-1	425
2001 TRACTOR WRECKER CABLE DRUM AND HOUSING	426-1	426
2001 TRACTOR WRECKER CABLE DRUM HOIST	427-1	427
2001 TRACTOR WRECKER CABLE DRUM HOIST PUMP	428-1	428
2001 TRACTOR WRECKER CRANE BOOM AND SHIPPER	429-1	429
2001 TRACTOR WRECKER RAM CYLINDER ASSEMBLY, CRANE BOOM, PULLEYS, BLOCK, AND CABLE	430-1	430
2001 TRACTOR WRECKER CRANE CONTROL VALVE BANK ASSEMBLY	431-1	431
2001 TRACTOR WRECKER CRANE CONTROL VALVE, HYDRAULIC LINES AND FITTINGS	432-1	432
2001 TRACTOR WRECKER BOOM LIFT CYLINDER AND HOIST MOTOR HYDRAULIC LINES AND FITTINGS	433-1	433
2001 TRACTOR WRECKER SWING MOTOR HYDRAULIC LINES AND FITTINGS	434-1	434
2001 TRACTOR WRECKER SWING MOTOR HYDRAULIC PUMP AND PROP SHAFT ASSEMBLIES	435-1	435
2001 VAN LIFTGATE FRAME AND LINKAGE	438-1	438
2001 VAN LIFTGATE CONTROLS AND SAFETY LATCH	439-1	439
2001 VAN LIFTGATE CONTROL ASSEMBLY, LEFT HAND, AND RIGHT HAND	440-1	440
2001 VAN LIFTGATE HYDRAULIC TUBING, OIL TANK, AND PUMP MOTOR	441-1	441
2001 VAN LIFTGATE HYDRAULIC TUBING AND FLOW CONTROL VALVE	443-1	443
2001 VAN LIFTGATE CYLINDER ASSEMBLY AND MOUNTING HARDWARE	444-1	444
2001 VAN LIFTGATE CLOSING CYLINDER ASSEMBLIES	445-1	445
2001 VAN LIFTGATE PUMP DRIVE SHAFT ASSEMBLY AND RELATED PARTS	446-1	446
2004 TRANSMISSION POWER TAKEOFF ASSEMBLY AND MOUNTING HARDWARE	447-1	447
2004 TRANSMISSION POWER TAKEOFF ASSEMBLY AND MOUNTING HARDWARE	448-1	448
2004 TRANSFER TRANSMISSION POWER TAKEOFF ASSEMBLY (614, 621, 636)	449-1	449
2004 TRANSFER TRANSMISSION POWER TAKEOFF ASSEMBLY (622)	450-1	450
2004 POWER DIVIDER AND DRIVE SHAFT ASSEMBLIES	451-1	451
2004 POWER DIVIDER GEARS, YOKES, AND RELATED PARTS	452-1	452
2004 TRANSFER TRANSMISSION POWER TAKEOFF CONTROLS	455-1	455
2004 VAN POWER TAKEOFF CONTROLS	456-1	456
2004 TRACTOR WRECKER AND BOLSTER LOGGER POWER TAKEOFF CONTROLS	457-1	457
2004 WRECKER POWER DIVIDER CONTROLS	458-1	458
2004 WRECKER AUXILIARY CLUTCH CONTROL PIPING	459-1	459

TABLE OF CONTENTS (CONT.)

	PAGE	ILLUS FIG
GROUP 22	BODY, CHASSIS, AND ACCESSORY ITEMS	
2201	SOFT TOP ASSEMBLY, MOUNTING HARDWARE, AND RELATED PARTS	460-1 460
2201	SOFT TOP POST AND RAIL ASSEMBLY	461-1 461
2201	CARGO BODY ADJUSTABLE SAFETY STRAP AND BOW STOWAGE STRAP ASSEMBLY	462-1 462
2201	WRECKER GONDOLA CANOPY AND SEAT	463-1 463
2202	WINDSHIELD WIPER ARM, BLADE AND MOUNTING HARDWARE	464-1 464
2202	TRACTOR WRECKER GONDOLA WINDSHIELD WIPER AND MOTOR	465-1 465
2202	REARVIEW MIRROR ASSEMBLY, RIGHT AND LEFT SIDE	466-1 466
2202	REARVIEW MIRROR ASSEMBLY, RIGHT AND LEFT SIDE (621)	467-1 467
2202	CONVEX SIDE VIEW MIRROR AND MOUNTING HARDWARE	468-1 468
2202	CARGO BODY REFLECTORS AND MOUNTING HARDWARE	469-1 469
2202	DUMP BODY REFLECTORS AND MOUNTING HARDWARE	470-1 470
2202	TRACTOR BODY REFLECTORS AND MOUNTING HARDWARE	471-1 471
2202	TRACTOR WRECKER, AND WRECKER BODY REFLECTORS, AND MOUNTING HARDWARE	472-1 472
2202	VAN BODY AND BOLSTER LOGGER BODY REFLECTORS AND MOUNTING HARDWARE	473-1 473
2210	DATA PLATES, ENGINE	474-1 474
2210	DATA PLATES, AIR CLEANER, AIR RESTRICTION GAGE, SURGE TANK, AND FUEL PUMP	475-1 475
2210	DATA PLATES, TRACTOR WRECKER, SWING MOTOR, AND CABLE DRUM DRIVE AND WRECKER CONTROLS . .	476-1 476
2210	DATA PLATES,, WRECKER CONTROLS, AND REAR WINCH CONTROLS	477-1 477
2210	DATA PLATES, FRONT AND REAR WINCH	478-1 478
2210	DATA PLATES, POWER TAKEOFF CONTROLS	479-1 479
2210	DATA PLATES, VAN BODY INTERIOR	480-1 480
2210	DATA PLATES, VAN BODY EXTERIOR AND VAN LIFTGATE	481-1 481
2210	DATA PLATES, TIRE WARNING, FIFTH WHEEL AND TOW BAR	482-1 482
2210	DATA PLATES, TRANSMISSION, POWER STEERING PUMP AND EMERGENCY AND SERVICE AIR	483-1 483

TABLE OF CONTENTS (CONT.)

	PAGE	ILLUS FIG
2210 DATA PLATES, INSTRUMENT PANEL, BATTERY BOX AND GENERATOR	484-1	484
2210 DATA PLATES, HOOD AND BRAKE FLUID	486-1	486
2210 DATA PLATES, DUMP BODY CAB PROTECTOR, CARGO BODY TAIL AND SIDE GATES	487-1	487
 GROUP 33 SPECIAL PURPOSE KITS		
3303 FUEL BURNING PERSONNEL HEATER KIT, HEATER EXHAUST, AND MOUNTING HARDWARE(SHEET 1 OF 3) .	489-1	489
3303 FUEL BURNING PERSONNEL HEATER KIT, PUMP, CONTROL, AND WIRING HARNESS	490-1	490
3303 FUEL BURNING PERSONNEL HEATER KIT, DEFROSTER ASSEMBLY	491-1	491
3303 FUEL BURNING PERSONNEL HEATER KIT, ALCOHOL EVAPORATER, RECEPTACLE, AND SHIFT LEVER DUST BOOTS	492-1	492
3303 ENGINE COOLANT HEATER KIT, HOOD AND GRILL COVER	493-1	493
3303 ENGINE COOLANT HEATER KIT, HEATER COOLANT ASSEMBLY	494-1	494
3303 ENGINE COOLANT HEATER KIT, CONTROL AND WIRING	495-1	495
3303 ENGINE COOLANT HEATER KIT, BATTERY BOX, EXHAUST, AND COOLANT HOSES	496-1	496
3303 HOT WATER PERSONNEL HEATER KIT, DEFROSTER ASSEMBLY AND DEFLECTOR	498-1	498
3303 HOT WATER PERSONNEL HEATER KIT, HEATER ASSEMBLY AND RELATED PARTS	499-1	499
3303 HOT WATER PERSONNEL HEATER KIT, RADIATOR COVER	500-1	500
3303 HOT WATER PERSONNEL HEATER KIT, CONTROL SWITCH, WIRING LEADS, AND RESISTER ASSEMBLY	501-1	501
3303 HARDTOP KIT	502-1	502
3305 DEEP WATER FORDING KIT, LINES AND FITTINGS	503-1	503
3305 DEEP WATER FORDING KIT, CONTROL ASSEMBLY AND AND VALVE SET	504-1	504
3305 DEEP WATER FORDING EXHAUST, M812A1	505-1	505
3307 SEAT BELT KIT, FIXED AND FLOATING DRIVER'S SEAT..	506-1	506
3307 MUD FLAP KIT, TRACTOR, REAR(SHEET 1 OF 2)	507-1	507
3307 WIPER WASHER BOTTLE KIT, JET AND PUMP ASSEMBLY	508-1	508
3307 SLAVE RECEPTACLE KIT	509-1	509
3307 INTERVEHICULAR POWER CABLE KIT	510-1	510
3307 A-FRAME COMPONENTS KIT	511-1	511
3307 PIONEER TOOL BRACKET KIT	512-1	512
3307 MACHINE GUN MOUNTING KIT.....	513-1	513
3307 AIR DROP KIT	514-1	514
3307 BOW AND TARP KIT, DROPSIDE	515-1	515

TABLE OF CONTENTS (CONT.)

	PAGE	ILLUS FIG
3307 BOW AND TARP KIT, CARGO (SHORT)	516-1	516
3307 BOW AND TARP KIT, CARGO, LONG WHEELBASE	517-1	517
3307 TARPAULIN EXTENSION KIT	518-1	518
3307 DUMP BODY TROOP SEAT AND TARPAULIN KIT TROOP SEAT AND SIDE RACKS	519-1	519
3307 DUMP BODY TROOP SEAT AND TARPAULIN KIT, TARPAULIN	520-1	520
3307 FIRE EXTINGUISHER KIT	521-1	521
3307 LOW AIR PRESSURE WARNING LIGHT KIT	522-1	522
3307 TACHOGRAPH KIT	523-1	523
3307 AIR HAND BRAKE KIT	524-1	524
3307 ALTERNATOR CONVERSION KIT, 60 TO 100 AMP	525-1	525
3307 VAN BODY STABILIZER KIT	526-1	526
3307 MINI-LIGHTING KIT, WIRING LEADS, BRACKETS, AND MOUNTING HARDWARE (SHEET 1 OF 2)	527-1	527
3307 CONVOY WARNING LIGHT KIT	528-1	528
3307 CONVOY WARNING LIGHT KIT, DUMP	529-1	529
3307 CONVOY WARNING LIGHT KIT, VAN	530-1	530
3307 M14/M16 RIFLE MOUNTING KIT	531-1	531
3307 FRONT BUMPER STEP KIT	532-1	532
3307 VEHICLE TIEDOWN KITS	533-1	533
3307 TACH CABLE INTERFERENCE RELIEF KIT	534-1	534
3307 PORTABLE DECONTAMINATION MOUNTING KIT	535-1	535
3307 CABLE REEL KIT (SHEET 1 OF 6)	536-1	536
3307 RAISED HOOD KIT	537-1	537
3307 POWER INPUT RECEPTACLE KIT	538-1	538
 GROUP 47 NON-ELECTRICAL GAGES		
4701 TACHOMETER AND SHAFT ASSEMBLY	539-1	539
4701 SPEEDOMETER AND SHAFT ASSEMBLY	540-1	540
4702 AIR AND OIL PRESSURE INDICATORS	541-1	541
 GROUP 94 REPAIR PARTS KITS		
9401 KITS	KITS-1	
 GROUP 95 GENERAL USE STANDARDIZED PARTS		
9501 . BULK	BULK	

TABLE OF CONTENTS (CONT.)

	PAGE	ILLUS FIG
SECTION III SPECIAL TOOLS LIST		
GROUP 26 TOOLS AND TEST EQUIPMENT		
2604 SPECIAL TOOL KIT, ORGANIZATIONAL	542-1	542
2604 SPECIAL TOOL KIT, DIRECT SUPPORT (SHEET 1 OF 4) . . .	543-1	543
2604 SPECIAL TOOL KIT, DIRECT SUPPORT (SHEET 2 OF 4) . . .	543-1	543
2604 SPECIAL TOOL KIT, DIRECT SUPPORT (SHEET 3 OF 4) . . .	543-1	543
2604 SPECIAL TOOL KIT, DIRECT SUPPORT (SHEET 4 OF 4) . . .	543-1	543
2604 SPECIAL TOOL KIT, GENERAL SUPPORT	544-1	544
 SECTION IV NATIONAL STOCK NUMBER INDEX	 I-1	
PART NUMBER INDEX	I-37	
FIGURE AND ITEM NUMBER INDEX..	I-111	

**UNIT MAINTENANCE
REPAIR PARTS AND SPECIAL TOOLS LIST
(INCLUDING DEPOT MAINTENANCE REPAIR PARTS)**

SECTION I. INTRODUCTION

1. Scope.

This Repair Parts and Special Tools List (RPSTL), lists and authorizes spares and repair parts; special tools; special test; measurement, and diagnostic equipment (TMDE); and other special support equipment required for performance of Unit maintenance of the 5-ton, 6X6, M809 series vehicles. It authorizes the requisitioning, issue, and disposition of spares, repair parts, and special tools as indicated by the source, maintenance, and recoverability (SMR) codes.

2. General.

In addition to Section I, Introduction, this Repair Parts and Special Tools List is divided into the following sections:

a. Section II. Repair Parts List. A list of spares and repair parts authorized by this RPSTL for use in the performance of maintenance. The list also includes parts which must be removed for replacement of the authorized parts. Parts lists are composed of functional groups in ascending alphanumeric sequence, with the parts in each group listed in ascending figure and item number sequence. Bulk materials are listed in item name sequence. Repair parts kits are listed separately in their own fictional group within Section II. Repair parts for repairable special tools are also listed in this section. Items listed are shown on the associated illustration(s)/figures(s).

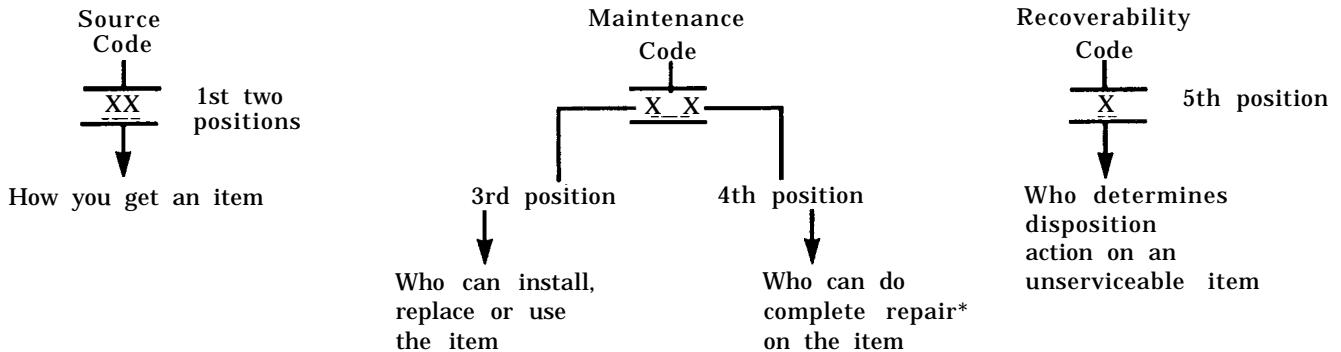
b. Section III. Special Tools List. A list of special tools, special TMDE, and other special support equipment authorized by this RPSTL (as indicated by Basis of Issue (BOI) information in DESCRIPTION AND USABLE ON CODE column) for the performance of maintenance.

c. Section IV. Cross-Reference Index. A list, in National item identification number (NIIN) sequence, of all National stock numbered items appearing in the listing, followed by a list in alphanumeric sequence of all part numbers appearing in the listings. National stock numbers and part numbers are cross-referenced to each illustration figure and item number appearance. The figure and item number index lists figure and item numbers in alphanumeric sequence and cross-references NSN, FSCM, and part numbers.

3. Explanation of Columns (Sections II and III).

a. Item No. (Column (1)). Indicates the number used to identify items called out in the illustration.

b. SMR Code (Column (2)). The Source, Maintenance, and Recoverability (SMR) code is a 5-position code containing supply/requisitioning information, maintenance category authorization criteria, and disposition instruction, as shown in the following breakout:



* Complete Repair: Maintenance capacity, capability, and authority to perform all corrective maintenance tasks of the "Repair" function in a use/user environment in order to restore serviceability to a failed item.

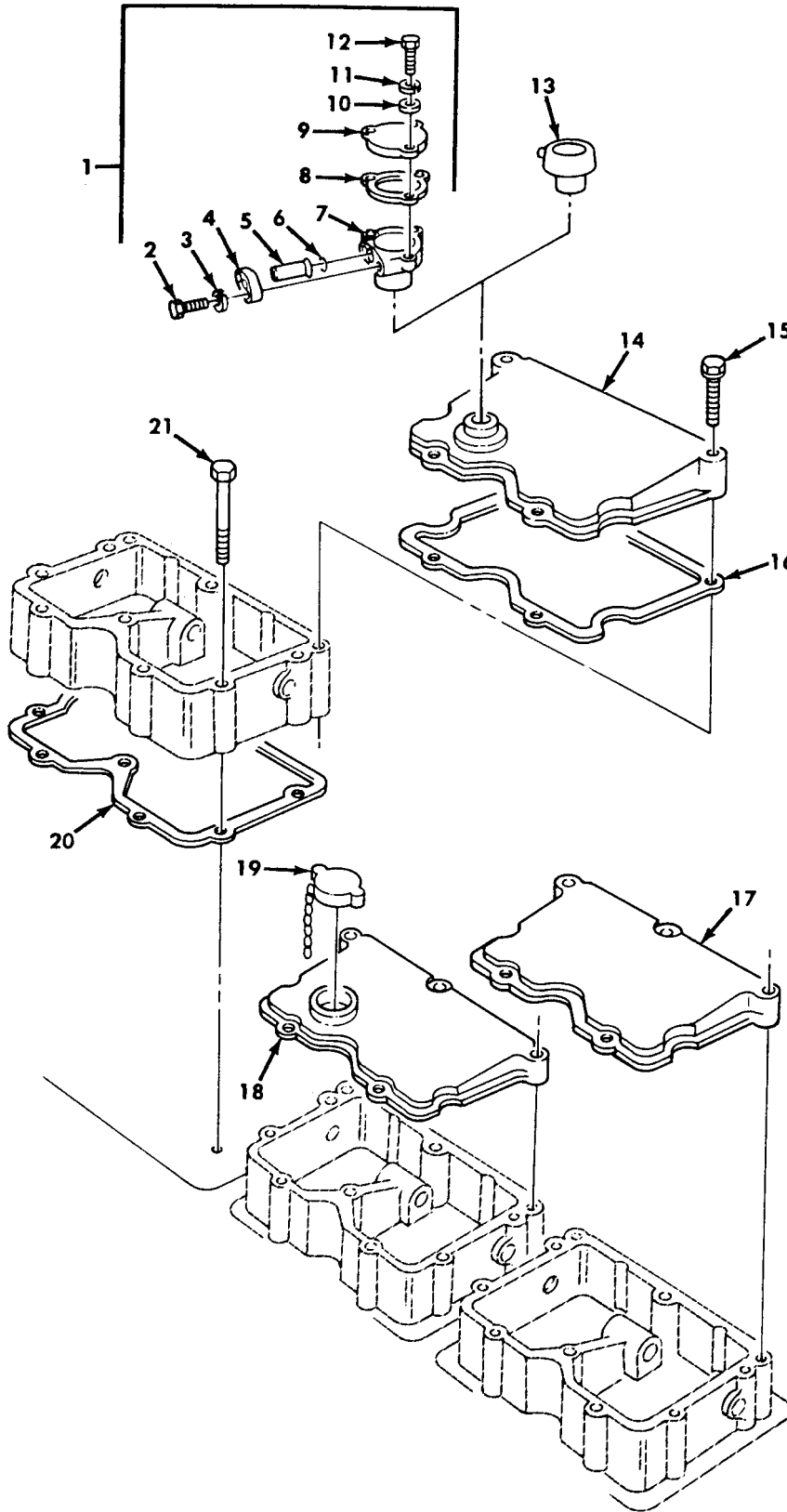


Figure 17. Rock Lever Housing Covers and Breather.

SECTION II

TM9-2320-260-20P

(1) ITEM NO	(2) SMR CODE	(3) CAGEC	(4) PART NUMBER	(5) DESCRIPTION AND USABLE ON CODES(UOC)	(6) QTY
GROUP 0105 VALVES,CAMSHAFTS,AND TIMING SYSTEM					
FIG.17 ROCKER LEVER HOUSING COVERS AND BREATHER					
1	PAOOO	15434	3028273	PARTS KIT,BREATHER USE WITH DEEP WATER FORDING	1
2	PAOZZ	15434	3021470	.SCREW,CAP,HEXAGON H	2
3	PAOZZ	96906	MS35338-45	.WASHER,LOCK	2
4	PAOZZ	15434	68562	.FLANGE,PIPE	1
5	PAOZZ	15434	208716	.TUBE,VENT	1
7	XAOZZ	15434	3027892	.BREATHER	1
8	PAOZZ	15434	122135	.GASKET	1
9	PAOZZ	15434	3027893	.COVER,ACCESS	1
10	PAOZZ	15434	S631	.WASHER,FLAT	3
11	PAOZZ	96906	MS122032	.WASHER,LOCK	3
12	PAOZZ	96906	MS90728-7	.SCREW,CAP,HEXAGON H	3
13	PAOZZ	15434	3008595	BREATHER NOT TO BE USED WITH DEEP WATER FORDING	1
19	PAOZZ	15434	208045	CAP,FILLER OPENING	1
21	PAOZZ	15434	3010589	SCREW,ASSEMBLED WAS	18

END OF FIGURE

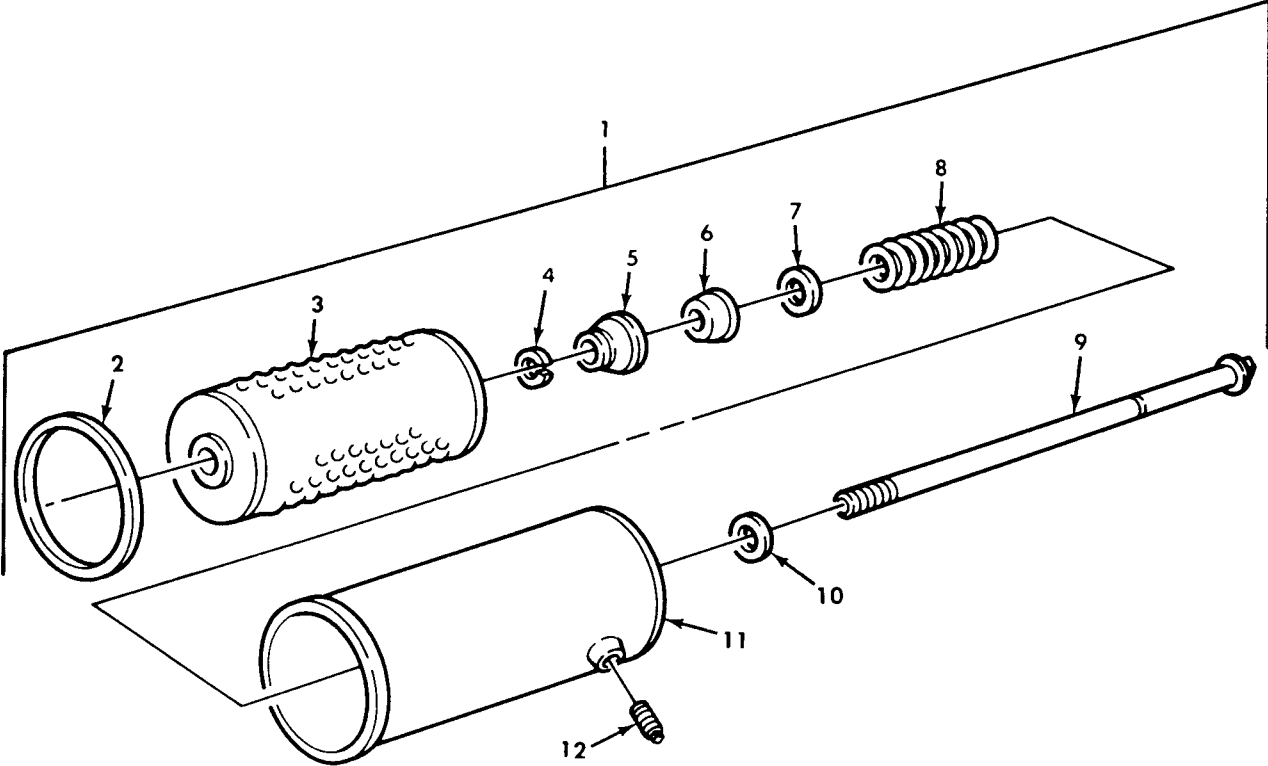


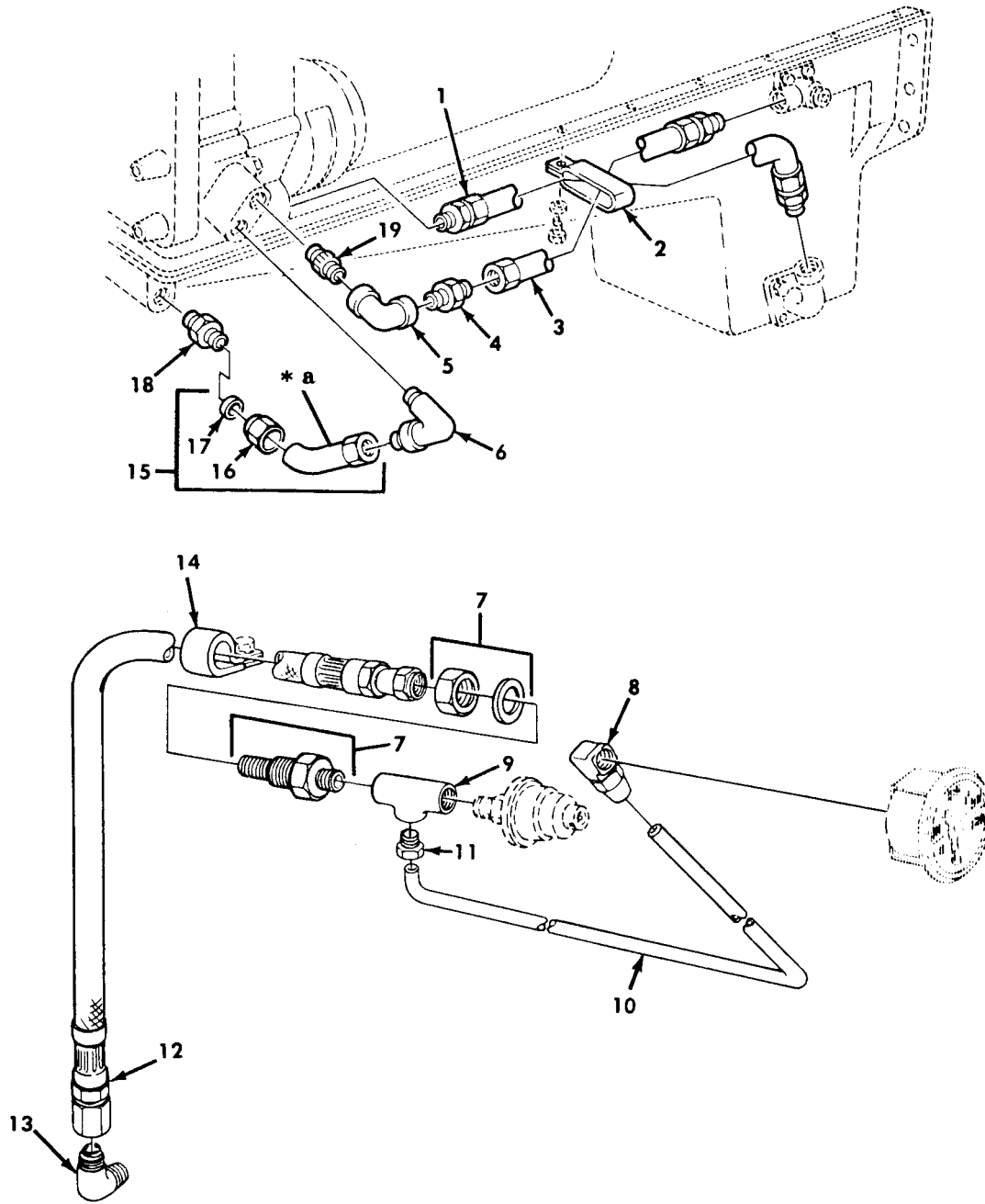
Figure 18. Lubricating Oil Filter.

SECTION II

TM9-2320-260-20P

(1) ITEM NO	(2) SMR CODE	(3) CAGEC	(4) PART NUMBER	(5) DESCRIPTION AND USABLE ON CODES(UOC)	(6) QTY
GROUP 0106 ENGINE LUBERICATION SYSTEM					
FIG.18 LUBRICATING OIL FILTER					
1	PAOOO	33457	181592S	FILTER BODY,FLUID	1
2	KFOZZ	15434	153528	.SEAL,OIL PART OF KIT P/N 3011472 PART OF KIT P/N AR51480	1
3	KFOZZ	15434	158139	.FILTER ELEMENT,FLUI PART OF KIT P/N AR51480	1
4	PAOZZ	33457	3301956	.RING,RETAINING	1
5	PAOZZ	15434	153521	.SUPPORT,CARTRIDGE	1
6	PAOZZ	33457	153518	.GASKET	1
7	PAOZZ	15434	153520	.WASHER,FLAT	1
8	PAOZZ	15434	153519-S	.SPRING,HELICAL,COMP	1
9	PAOZZ	15434	3301954	.BOLT,MACHINE	1
10	PAOZZ	15434	8265	.GASKET,COPPER	1
11	PAOZZ	15434	153516	.FILTER BODY,FLUID	1
12	PAOZZ	11083	5M6214	.PLUG,PIPE	1

END OF FIGURE



* a PART OF ITEM 15

Figure 20. Engine Oil Scavenger Pump Lines and Fittings.

SECTION II

TM9-2320-260-20P

(1) ITEM NO	(2) SMR CODE	(3) CAGEC	(4) PART NUMBER	(5) DESCRIPTION AND USABLE ON CODES(UOC)	(6) QTY
GROUP 0106 ENGINE LUBRICATION SYSTEM					
FIG.20 ENGINE OIL SCAVENGER PUMP LINES AND FITTINGS					
1	PAOZZ	15434	AS-1603506MS	HOSE ASSEMBLY,NONME	1
2	PAOZZ	15434	114421	CLAMP,LOOP	2
3	PAOZZ	15434	AS-1602906MS	HOSE ASSEMBLY,NONME	1
4	PAOZZ	15434	67944	ADAPTER,STRAIGHT,PI	1
5	PAOZZ	15434	S987	ELBOW,PIPE	1
6	PAOZZ	30327	69FL3-4	ELBOW,PIPE TO TUBE	1
7	PAOZZ	19207	10924754	UNION,TUBE	1
8	PAOZZ	81343	4-2 120203BA	ELBOW,PIPE TO TUBE	1
9	PAOZZ	19207	11648496	TEE,PIPE TO TUBE	1
10	MOOZZ	19207	11648490	TUBE ASSEMBLY,METAL MAKE FROM TUBE, P/N 8689206	1
11	PAOZZ	03477	SM1804	INVERTED NUT,TUBE C	1
12	PAOZZ	19207	11648774	HOSE ASSEMBLY,NONME	1
13	PAOZZ	2145C	118753	ELBOW PIPE	1
14	PAOZZ	96906	MS21333-125	CLAMP,LOOP	1
15	PAOZZ	15434	202603	TUBE ASSEMBLY,METAL	1
16	PAOZZ	15434	S-1076	.NUT,TUBE	1
17	PAOZZ	15434	S1077	.BUSHING,RUBBER	1
18	PAOZZ	30327	68FL3-4X1-2	ADAPTER,STRAIGHT,PI	1
19	PAOZZ	96906	MS51953-97	NIPPLE,PIPE	1

END OF FIGURE