

# TECHNICAL MANUAL

UNIT, DIRECT SUPPORT AND GENERAL SUPPORT MAINTENANCE  
REPAIR PARTS AND SPECIAL TOOLS LIST  
(INCLUDING DEPOT MAINTENANCE REPAIR PARTS AND  
SPECIAL TOOLS)

FOR

RECOVERY VEHICLE, FULL TRACKED: HEAVY  
M88A2 (NSN 2350-01-290-4683)  
(EIC: ACQ)

This manual supersedes TM 9-2350-292-24P dated 01 June 2000  
Distribution Statement A: Approved for public release; distribution is unlimited.

---

01 JANUARY 2002

HEADQUARTERS, DEPARTMENT OF THE ARMY  
HEADQUARTERS, U.S. MARINE CORPS

TM 9-2350-292-24P  
U.S. MARINE CORPS TM 07769B-24P/4

HEADQUARTERS  
DEPARTMENT OF THE ARMY  
U.S. MARINE CORPS  
WASHINGTON, D.C., 01 JANUARY 2002

**UNIT, DIRECT SUPPORT AND GENERAL SUPPORT  
MAINTENANCE REPAIR PARTS  
AND SPECIAL TOOLS LIST  
(INCLUDING DEPOT MAINTENANCE  
REPAIR PARTS AND SPECIAL TOOLS)**

FOR

**RECOVERY VEHICLE, FULL TRACKED: HEAVY  
M88A2 (NSN 2350-01-390-4683)**

**CURRENT AS OF 01 JANUARY 2002**

**REPORTING OF ERRORS AND RECOMMENDING IMPROVEMENTS**

You can help improve this publication. If you find mistakes or if you know of a way to improve the procedures, please let us know. Submit DA Form 2028 (Recommended Changes to Equipment Technical Publications), through the Internet, on the Army Electronic Product support (AEPS) website. The internet address is <http://aeeps.ria.army.mil>. If you need a password, scroll down and click on "ACCESS REQUEST FORM". The DA Form 2028 is located in the ON-LINE FORMS PROCESSING section of the AEPS. Fill out the form and click on SUBMIT. Using this form on the AEPS will enable us to respond quicker to your comments and better manage the DA Form 2028 program. You may also mail, fax or email your letter, or DA Form 2028 direct to: Technical Publication Information Office, TACOM-RI, 1 Rock Island, IL 61299-7630. The email address is [TACOM-TECH-PUBS@ria.army.mil](mailto:TACOM-TECH-PUBS@ria.army.mil). The fax number is DSN 793-0726 or Commercial (309) 782-0726.

Marine Corps users submit NAVMC Form 10772 directly to: Commanding General, Marine Corps Logistics Base (Code 850), Albany, GA 31704-5000.

A reply will be furnished directly to you.

TM 9-2350-292-24P  
TABLE OF CONTENTS

WP SEQUENCE NO.

|                             |  |      |    |
|-----------------------------|--|------|----|
| INTRODUCTION                | .....  | 0001 | 00 |
| <b>Group 01 Engine</b>      |  |      |    |
| 0100                        | Engine Assembly  |      |    |
|                             | Engine Assembly with Container .....   | 0002 | 00 |
|                             | Engine Shroud Seals, Air In-take Elbow and Engine Mount Assembly .....                                       | 0003 | 00 |
|                             | Engine Rear Mount and Base Assembly .....  | 0004 | 00 |
|                             | Engine Fuel Lines and Fittings .....   | 0005 | 00 |
| 0106                        | Engine Lubrication System  |      |    |
|                             | Damper Housing, Oil Sampling Valve, Oil Filter and Related Parts .....                                       | 0006 | 00 |
|                             | Damper and Oil Filter Housing Related Parts .....  | 0007 | 00 |
|                             | Oil Level Gauge Rod and Oil Filler Tube .....  | 0008 | 00 |
|                             | Oil Pan and Related Parts .....  | 0009 | 00 |
|                             | Cylinder Head Oil Drain Tubes and Related Parts .....  | 0010 | 00 |
|                             | Engine Oil Hose Assemblies, Tube Assemblies and Related Parts .....  | 0011 | 00 |
|                             | Engine and Transmission Oil Cooler Access Covers and Frames .....  | 0012 | 00 |
|                             | Engine and Transmission Oil Cooler Access Covers and Frames (Continued) .....                                | 0013 | 00 |
|                             | Engine and Transmission Oil Coolers, Screens and Related Parts .....   | 0014 | 00 |
| 0108                        | Manifold Screens   |      |    |
|                             | Aftercooler Screens and Related Parts .....  | 0015 | 00 |
| <b>Group 03 Fuel System</b> |  |      |    |
| 0302                        | Fuel Pumps   |      |    |
|                             | Electric Fuel Pump and Mount Assembly .....  | 0016 | 00 |
|                             | Fuel Transfer Pump and Hose Assemblies .....   | 0017 | 00 |
|                             | Fuel Injector Tubes, Brackets and Related Parts .....  | 0018 | 00 |
|                             | Fuel Injector Nozzle Return Hoses and Related Parts .....  | 0019 | 00 |
|                             | Fuel Pump, Fuel Back Flow Valve and Related Parts .....  | 0020 | 00 |
| 0304                        | Air Cleaner  |      |    |
|                             | Left Air Cleaner, Restriction Gauge, Damper and Related Parts .....  | 0021 | 00 |
|                             | Right Air Cleaner, Restriction Gauge, Damper and Related Parts .....   | 0022 | 00 |
|                             | Left and Right Air Cleaner Ducts and Related Parts .....   | 0023 | 00 |
| 0305                        | Turbocharger and Related Parts   |      |    |
|                             | Dust Detector System .....   | 0024 | 00 |
| 0306                        | Tanks, Lines, Fittings and Headers   |      |    |
|                             | Left Fuel Tank and Related Parts .....   | 0025 | 00 |
|                             | Right Fuel Tank and Related Parts .....  | 0026 | 00 |
|                             | Front Fuel Tank and Related Parts .....  | 0027 | 00 |
|                             | Fuel Lines and Manual Fuel Shut-Off Control Assembly .....   | 0028 | 00 |
|                             | Fuel Control Valves, Lines and Related Parts .....   | 0029 | 00 |
| 0309                        | Fuel Filters   |      |    |
|                             | Water Separator, Primary and Manifold Heater Fuel Filter, Automatic Drain<br>Control and Related Parts ..... | 0030 | 00 |
|                             | Primary and Water Separator Fuel Filter Assemblies .....   | 0031 | 00 |
| 0311                        | Engine Starting Aids   |      |    |
|                             | Manifold Heater Assembly (Left Bank) .....   | 0032 | 00 |
|                             | Manifold Heater Assembly (Right Bank) .....  | 0033 | 00 |
|                             | Manifold Heater Pump, Lines, Valve Solenoid and Related Parts .....  | 0034 | 00 |

TABLE OF CONTENTS - CONTINUED

WP SEQUENCE NO.

|      |   |         |
|------|---|---------|
| 0312 | Accelerator, Throttle, or Choke Controls            |         |
|      | Accelerator Controls and Linkages .....             | 0035 00 |
|      | Accelerator Controls and Linkages (Continued) ..... | 0036 00 |

**Group 04 Exhaust System**

|      |   |         |
|------|---|---------|
| 0401 | Muffler and Pipes                         |         |
|      | Exhaust Pipes and Insulation Covers ..... | 0037 00 |

**Group 05 Cooling System**

|      |  |         |
|------|--|---------|
| 0501 | Oil Cooler   |         |
|      | Left Hydraulic Cooler and Related Parts .....      | 0038 00 |
|      | Right Hydraulic Cooler and Related Parts .....     | 0039 00 |
|      | Hydraulic Cooler Assembly, 12366016 .....          | 0040 00 |
| 0502 | Shrouds  |         |
|      | Engine Shrouds and Related Parts .....             | 0041 00 |
|      | Engine Shrouds and Related Parts (Continued) ..... | 0042 00 |
| 0505 | Fan Assembly                                       |         |
|      | Engine Cooling Fans and Housing .....              | 0043 00 |
|      | Fan Drive Clutch Assembly and Related Parts .....  | 0044 00 |

**Group 06 Electrical System**

|      |   |         |
|------|---|---------|
| 0601 | Generator   |         |
|      | Engine Generator, Cradle, Bracket, Oil Hoses and Related Parts .....                              | 0045 00 |
| 0602 | Voltage Regulator   |         |
|      | APU and Main Engine Voltage Regulators and Lead Assembly 3W193 .....                              | 0046 00 |
| 0603 | Starting Motor  |         |
|      | Engine Starter, Cradle, Bracket and Related Parts .....   | 0047 00 |
|      | Low Voltage Protection Module .....   | 0048 00 |
| 0606 | Engine Safety Controls  |         |
|      | Fuel Shut-off Wiring Harness and Fuel/Water Separator Automatic Drain System Wiring Harness ..... | 0049 00 |
| 0607 | Control Panels  |         |
|      | Main Switch Panel Assembly .....  | 0050 00 |
|      | Main Switch Panel Assembly, 12364393 .....  | 0051 00 |
|      | Main Switch Panel Assembly, 12364393 (Continued) .....  | 0052 00 |
|      | Lead Assembly 4W109 .....   | 0053 00 |
|      | Lead Assembly 4W117 .....   | 0054 00 |
|      | Wiring Harness 4W118 .....  | 0055 00 |
|      | Wiring Harness 4W151 .....  | 0056 00 |
|      | Gauge Panel Assembly .....  | 0057 00 |
|      | Gauge Panel Assembly (Continued) .....  | 0058 00 |
|      | Gauge Panel Assembly, 12364657 .....  | 0059 00 |
|      | Wiring Harness 4W152 .....  | 0060 00 |
|      | PTO/Accessory Panel Assembly .....  | 0061 00 |
|      | PTO/Accessory Panel, 12366321 .....   | 0062 00 |
|      | PTO/Accessory Panel, 12366321 (Continued) .....   | 0063 00 |
|      | Hydraulic Control Panel .....   | 0064 00 |

TABLE OF CONTENTS - CONTINUED

WP SEQUENCE NO.

|      |   |         |
|------|---|---------|
|      | Hydraulic Control Panel, 12366062 .....   | 0065 00 |
|      | Auxiliary Power Unit Control Box (Old Configuration) .....                            | 0066 00 |
|      | Auxiliary Power Unit Control Box (New Configuration) .....                            | 0067 00 |
|      | Auxiliary Power Unit Control Box, 12364382 or 12367225 .....                          | 0068 00 |
|      | Wiring Harness 4W725 .....  | 0069 00 |
|      | Personnel Heater Control Box Assembly .....   | 0070 00 |
| 0608 | Miscellaneous Items   |         |
|      | Neutral Safety Switch, Stoplight Switch, Exhaust Smoke Switch and Level               |         |
|      | Winding Warning Switch and Related Parts .....  | 0071 00 |
|      | Flasher and Related Parts .....   | 0072 00 |
|      | STE/ICE Resistor Box and Mounting Bracket .....                                       | 0073 00 |
|      | Current Shunt .....   | 0074 00 |
|      | Positive Bus Bar .....  | 0075 00 |
|      | Negative Bus Bar .....  | 0076 00 |
|      | Bulkhead Connectors .....   | 0077 00 |
|      | Driver's Headlight Dimmer Switch and Rear Service Light Switch .....                  | 0078 00 |
|      | Driver's Headlight Dimmer Switch .....  | 0079 00 |
|      | Brake Relay and Circuit Breaker .....   | 0080 00 |
|      | Bilge Pump Power Lead Relay, Mounting Plate and Circuit Breaker .....                 | 0081 00 |
|      | Dummy Connector Assembly Infrared and Passive Night Viewer .....                      | 0082 00 |
|      | High Beam Indicator Light Assembly and Directional Signal Control Switch .....        | 0083 00 |
|      | Master Relay and Mounting Bracket .....   | 0084 00 |
|      | Antenna Base Cover and Related Parts .....  | 0085 00 |
| 0609 | Lights  |         |
|      | Headlight Assembly .....  | 0086 00 |
|      | Headlight Base Assembly 4W159-1 and 4W159-2 .....                                     | 0087 00 |
|      | Rear Stop Light (Right) .....   | 0088 00 |
|      | Rear Stop Light (Left) .....  | 0089 00 |
|      | Emergency Flasher Lamp Assembly .....   | 0090 00 |
|      | Turn Signal Lamp Assembly .....   | 0091 00 |
|      | Rear Service Light .....  | 0092 00 |
|      | Trouble Light Pistol Grip Assembly .....  | 0093 00 |
|      | Trouble Light Pistol Grip Assembly, TL201 .....                                       | 0094 00 |
|      | Spotlight and Related Parts .....   | 0095 00 |
|      | Winch Illumination Lamp Assembly .....  | 0096 00 |
|      | Dome Light Assembly .....   | 0097 00 |
| 0610 | Pressure Switches and Sending Units   |         |
|      | Engine Oil Pressure and Temperature Switches and Transmitters and Related Parts ..... | 0098 00 |
|      | Turbocharger Pressure Transducer and Engine Wiring Harness Clamps .....               | 0099 00 |
|      | Engine Electrical Installation .....  | 0100 00 |
|      | Thermostatic Switch .....   | 0101 00 |
| 0611 | Horn  |         |
|      | Horn Assembly .....   | 0102 00 |
|      | Lead Assembly 4W156 .....   | 0103 00 |
|      | Proximity Switch Assembly .....   | 0104 00 |
| 0612 | Batteries   |         |
|      | Batteries, Battery Tray and Terminal .....  | 0105 00 |

TABLE OF CONTENTS - CONTINUED

WP SEQUENCE NO.

0613

|  |         |
|--|---------|
| Hull Wiring Harness  |         |
| Wiring Harness 2W601   | 0106 00 |
| Wiring Harness 2W601 (Main Winch Override Modification)        | 0107 00 |
| Wiring Harness 2W612 (Main Winch Override Modification)        | 0108 00 |
| Wiring Harness 2W602   | 0109 00 |
| Wiring Harness 3W132   | 0110 00 |
| Wiring Harness 3W142   | 0111 00 |
| Wiring Harness 3W143   | 0112 00 |
| Lead Assembly 3W174  | 0113 00 |
| Wiring Harness 3W180   | 0114 00 |
| Starter Wiring Harness 3W200                                   | 0115 00 |
| Starter Ground Wiring Harness 3W201                            | 0116 00 |
| Hull Wiring Harness 3W202                                      | 0117 00 |
| Lead Assembly 3W203  | 0118 00 |
| Wiring Harness 3W206   | 0119 00 |
| Wiring Harness 3W207   | 0120 00 |
| Lead Assembly 3W209  | 0121 00 |
| Lead Assembly 3W210  | 0122 00 |
| Lead Assembly 3W212-1, 3W212-2, 3W212-3                        | 0123 00 |
| Slave Receptacle Wiring Harness 3W213 and Wiring Harness 3W214 | 0124 00 |
| Lead Assembly 3W215  | 0125 00 |
| Wiring Harness 3W217   | 0126 00 |
| Wiring Harness 3W218   | 0127 00 |
| Wiring Harness 3W702   | 0128 00 |
| Wiring Harness 3W710   | 0129 00 |
| Wiring Harness 3W801   | 0130 00 |
| Wiring Harness 4W100   | 0131 00 |
| Wiring Harness 4W101   | 0132 00 |
| Wiring Harness 4W103   | 0133 00 |
| Wiring Harness 4W105   | 0134 00 |
| Wiring Harness 4W106   | 0135 00 |
| Wiring Harness 4W107   | 0136 00 |
| Wiring Harness 4W108   | 0137 00 |
| Wiring Harness 4W110   | 0138 00 |
| Wiring Harness 4W115   | 0139 00 |
| Wiring Harness 4W116   | 0140 00 |
| Wiring Harness 4W124   | 0141 00 |
| Wiring Harness 4W127   | 0142 00 |
| Wiring Harness 4W136   | 0143 00 |
| Wiring Harness 4W140   | 0144 00 |
| Wiring Harness 4W153   | 0145 00 |
| Wiring Harness 4W155   | 0146 00 |
| Wiring Harness 4W158   | 0147 00 |
| Wiring Harness 4W617   | 0148 00 |
| Wiring Harness 4W618   | 0149 00 |
| Wiring Harness 4W700 and Ground Lead MS25083-4CC48             | 0150 00 |
| Wiring Harness 4W800   | 0151 00 |
| Engine Wiring Harness Brackets and Clamps                      | 0152 00 |
| Electrical Cable Clamps  | 0153 00 |
| Fuel Tank Ground Strap   | 0154 00 |
| Hull Wiring Harness Attaching Parts                            | 0155 00 |
| Hull Wiring Harness Attaching Parts                            | 0156 00 |
| Hull Wiring Harness Attaching Parts                            | 0157 00 |
| Engine Wiring Harness Clamps                                   | 0158 00 |
| Electrical Connector Covers and Related Parts                  | 0159 00 |

TABLE OF CONTENTS - CONTINUED

WP SEQUENCE NO.

|      |   |         |
|------|---|---------|
| 0616 | Ventilating Equipment<br>Ventilator Blower Assembly ..... | 0160 00 |
|------|---|---------|

**Group 07 Transmission**

|      |   |         |
|------|---|---------|
| 0700 | Transmission<br>Transmission with Container .....   | 0161 00 |
|      | Engine and Transmission Roller Bracket Assemblies, Turbocharger Covers,<br>Lines and Fittings ..... | 0162 00 |
| 0705 | Transmission Shifting Components<br>Transmission Pressure and Temperature Transmitters .....        | 0163 00 |
|      | Transmission Shifting Controls .....  | 0164 00 |
| 0708 | Torque Converter<br>Torque Converter with Related Parts .....                                       | 0165 00 |
| 0710 | Transmission Assembly<br>Transmission Bayonet Gauge .....   | 0166 00 |
| 0721 | Transmission Oil Breather and Related Parts<br>Transmission Oil Filters .....                       | 0167 00 |
|      | Transmission Breather Assembly and Brake Actuating Link .....                                       | 0168 00 |
| 0724 | Clutch Pack of Steering Clutch<br>Left and Right Steer Clutch and Output Planetary .....            | 0169 00 |

**Group 08 Final Drive Assemblies**

|      |   |         |
|------|---|---------|
| 0801 | Power Transfer and Final Drive Assemblies<br>Output Reduction Unit with Container ..... | 0170 00 |
|      | Left and Right Output Reduction Mounting Saddles and Brakes .....                       | 0171 00 |

**Group 12 Brakes**

|      |   |         |
|------|---|---------|
| 1202 | Service Brakes<br>Brake Hose Assemblies and Fittings (Old Configuration) .....                | 0172 00 |
|      | Brake Hose Assemblies and Fittings (New Configuration) .....                                  | 0173 00 |
|      | Brake Hose Assemblies and Fittings (New Configuration with Brake Modulation) .....            | 0174 00 |
|      | Brake Bleed Valve, Manifold, Hose Assemblies and Related Parts .....                          | 0175 00 |
|      | Brake Control Linkage (Old Configuration) .....   | 0176 00 |
|      | Brake Control Linkage (New Configuration with Brake Modulation) .....                         | 0177 00 |
|      | Brake Control Linkage (Continued) .....   | 0178 00 |
|      | Brake Control Linkage and Plate Assembly (Old Configuration) .....                            | 0179 00 |
|      | Brake Control Linkage and Plate Assembly (New Configuration with Brake Modulation) .....      | 0180 00 |
|      | Brake Plate Assembly and Modulating Valve Assembly (Old Configuration) .....                  | 0181 00 |
|      | Manifold and Hydraulic Cylinder Assembly (New Configuration with Brake Modulation) .....      | 0182 00 |
|      | Brake Accumulator and Related Parts .....   | 0183 00 |
|      | Brake Power Boost Manifold Assembly, 12364361 .....   | 0184 00 |
|      | Brake Power Boost Manifold Assembly, 12367343 (New Configuration) .....                       | 0185 00 |
|      | Brake Pump and Motor .....  | 0186 00 |
|      | Brake Pedal and Bracket Assembly, 12364821 (Old Configuration) .....                          | 0187 00 |
|      | Brake Pedal and Bracket Assembly, 12364821 (New Configuration<br>with Brake Modulation) ..... | 0188 00 |
|      | Brake Valve Assembly, 12367166 (New Configuration with Brake Modulation) .....                | 0189 00 |

TABLE OF CONTENTS - CONTINUED

WP SEQUENCE NO.

**Group 13 Wheels and Tracks**

|      |   |         |
|------|---|---------|
| 1301 | Suspension Assembly   |         |
|      | Suspension System .....   | 0190 00 |
|      | Suspension Assembly, Hub and Arm Assembly (Station 1), Torsion Bars and Related Parts .....       | 0191 00 |
|      | Suspension System, Hub and Arm Assembly (Stations 2 thru 6), Torsion Bars and Related Parts ..... | 0192 00 |
|      | Left and Right Hub and Arm Assembly (Station 1) .....   | 0193 00 |
|      | Left and Right Hub and Arm Assembly (Stations 2 thru 6) .....                                     | 0194 00 |
|      |   |         |
| 1302 | Track Support Roller and Brackets   |         |
|      | Track Support Roller, Bracket and Wheel .....   | 0195 00 |
|      | Track Support Roller, Bracket and Wheel (Left Front) .....  | 0196 00 |
|      |   |         |
| 1303 | Track Idlers and Brackets   |         |
|      | Idler Hub and Arm Assembly, Adjusting Link Assembly (Old Configuration) and Related Parts .....   | 0197 00 |
|      | Idler Hub and Arm Assembly, Adjusting Link Assembly (New Configuration) and Related Parts .....   | 0198 00 |
|      | Left Adjusting Link Assembly, 12366164 (Old Configuration) .....                                  | 0199 00 |
|      | Left Adjusting Link Assembly, 12366878 (New Configuration) .....                                  | 0200 00 |
|      | Right Adjusting Link Assembly, 12366165 (Old Configuration) .....                                 | 0201 00 |
|      | Right Adjusting Link Assembly, 12366879 (New Configuration) .....                                 | 0202 00 |
|      | Idler Hub and Arm Assembly .....  | 0203 00 |
|      |   |         |
| 1304 | Final Drive Hub and Sprocket  |         |
|      | Final Drive Hub and Related Parts .....   | 0204 00 |
|      |   |         |
| 1305 | Track and Track Shoe  |         |
|      | Track and Track Shoe Assemblies .....   | 0205 00 |
|      | Track Binder Retainers .....  | 0206 00 |

**Group 14 Steering and Shifting Control Components**

|      |   |         |
|------|---|---------|
| 1401 | Mechanical Steering Gear Assembly                                       |         |
|      | Steering Control Assembly .....   | 0207 00 |
|      | Steering Control Assembly and Shifting Controls, Crew Compartment ..... | 0208 00 |
|      | Steering and Shifting Controls, Crew Compartment .....                  | 0209 00 |
|      | Steering and Shifting Controls, Engine Compartment .....                | 0210 00 |
|      | Steering and Shifting Controls, Engine Compartment (Continued) .....    | 0211 00 |

**Group 15 Towing Attachments**

|      |  |         |
|------|--|---------|
| 1503 | Pintles and Towing Attachments         |         |
|      | Towing Pintle and Mount Assembly ..... | 0212 00 |

**Group 16 Springs and Shock Absorbers**

|      |   |         |
|------|---|---------|
| 1604 | Shock Absorbers                                 |         |
|      | Lockout Block Spacers and Bumper Assembly ..... | 0213 00 |
|      | Shock Absorber and Mounting Brackets .....      | 0214 00 |



TABLE OF CONTENTS - CONTINUED

WP SEQUENCE NO.

Group 18 Body, Hood and Hull

|      |  |         |
|------|--|---------|
| 1801 | Body, Hood and Hull Assemblies   |         |
|      | APU Cover, Engine Doors, Grills and Related Parts .....                    | 0215 00 |
|      | Transmission Guide Bar Mending Plate .....                                 | 0216 00 |
|      | Engine Deck, Exhaust Deflector, Stayline Tree Tray and Related Parts ..... | 0217 00 |
|      | Engine Deck Assembly, 12364695 .....                                       | 0218 00 |
|      | Engine Deck Cover and Door Assembly .....                                  | 0219 00 |
|      | Engine Deck Cover Assembly, 12364717 .....                                 | 0220 00 |
|      | Engine Deck Base Assembly, 12448134 .....                                  | 0221 00 |
|      | Hoist Boom Rest and Related Parts .....                                    | 0222 00 |
|      | Hoist Winch Cable Access Door .....  | 0223 00 |
|      | Left Storage Door Assembly .....   | 0224 00 |
|      | Personnel Door Assembly .....  | 0225 00 |
|      | Left Personnel Door Assembly, 12365058 .....                               | 0226 00 |
|      | Right Personnel Door Assembly, 12365059 .....                              | 0227 00 |
|      | Personnel Door Hinge Blocks .....  | 0228 00 |
|      | Personnel Door Hinge Blocks (Continued) .....                              | 0229 00 |
|      | Access Covers and Related Parts .....                                      | 0230 00 |
|      | Fuel Filler Access Cover and Data Plate .....                              | 0231 00 |
|      | Left and Right Side Air Cleaner Inlet Cover .....                          | 0232 00 |
|      | Fuel Door Assembly and Data Plate .....                                    | 0233 00 |
|      | APU Door Assembly .....  | 0234 00 |
|      | Acetylene Access Port Armor .....  | 0235 00 |
| 1802 | Fenders and Armor Skirts   |         |
|      | Skirts, Fenders and Related Parts .....                                    | 0236 00 |
|      | Skirts, Fenders and Related Parts (Continued) .....                        | 0237 00 |
|      | Skirts, Fenders and Related Parts (Continued) .....                        | 0238 00 |
| 1803 | Hatches and Periscopes   |         |
|      | Commander's Cupola And Mount Assembly .....                                | 0239 00 |
|      | Commander's Cupola Assembly, 12364811-1 .....                              | 0240 00 |
|      | Commander's Cupola Door Assembly, 12365262 .....                           | 0241 00 |
|      | Driver's Cab Top Door and Housing Assembly .....                           | 0242 00 |
|      | Periscope Quick-Release Assembly (Passive Night Viewer) .....              | 0243 00 |
|      | Mechanic's Cab Top Door and Housing Assembly .....                         | 0244 00 |
|      | Personnel Cab Top Door and Housing Assembly .....                          | 0245 00 |
|      | Vision Prisms and Related Parts .....                                      | 0246 00 |
| 1804 | Drain Valves and Covers  |         |
|      | Drain Valve, Control Assembly and Related Parts .....                      | 0247 00 |
|      | Drain Covers and Related Parts .....                                       | 0248 00 |
| 1805 | Floor, Subfloor, and Related Components                                    |         |
|      | Subfloors and Related Parts .....  | 0249 00 |
|      | Floor Plate Assembly 12477573 .....  | 0250 00 |
|      | Floor Plate Assembly 12477598 .....  | 0251 00 |
|      | Subfloors and Related Parts (Continued) .....                              | 0252 00 |
| 1806 | Seats and Shoulder Harnesses   |         |
|      | Commander's Seat Assembly .....  | 0253 00 |
|      | Personnel Seat Assembly .....  | 0254 00 |
|      | Driver's Seat Assembly (Continued) .....                                   | 0255 00 |
|      | Mechanic's Seat Assembly .....   | 0256 00 |
|      | Driver's and Mechanic's Shoulder Harness Seat Belt and Related Parts ..... | 0257 00 |

TABLE OF CONTENTS - CONTINUED

WP SEQUENCE NO.

|      |   |         |
|------|---|---------|
| 1808 | Stowage Racks, Boxes, Straps and Carrying Cases   |         |
|      | Ammunition Rack and Rocket Brackets .....   | 0258 00 |
|      | Acetylene Cylinder Bracket Assembly and Tool Box Strap .....                              | 0259 00 |
|      | Interior Stowage Baskets and Supports .....   | 0260 00 |
|      | Liquid Container Bracket Assembly, Periscope and Hand Grenade Boxes .....                 | 0261 00 |
|      | Interior Straps and Rifle Clips .....   | 0262 00 |
|      | Binocular Case Straps .....   | 0263 00 |
|      | Exterior Straps, Stowage Tray, Storage Box Assembly and Tow Bar<br>Bracket Assembly ..... | 0264 00 |
|      | Fire Extinguisher Brackets .....  | 0265 00 |
|      | Ammunition Box Assembly, Oddment Tray and Shelf Assembly .....                            | 0266 00 |
|      | Flasher Lamp Case .....   | 0267 00 |
|      | Oddment Tray Assembly and Tool Box Rack .....   | 0268 00 |
|      | Tool Set Bracket, Vise Adapter, Snatch Block Bracket and Related Parts .....              | 0269 00 |
|      | Spare Roadwheel and Sprocket Bracket and Attaching Hardware .....                         | 0270 00 |
|      | Auxiliary Boom Pad and Bracket, Rear Tow Bar Bracket and Utility Chain<br>Clamps .....    | 0271 00 |
|      | Oxygen Tank Retaining Straps .....  | 0272 00 |
|      | 140-Ton Snatch Block Retaining Bar and Bracket .....                                      | 0273 00 |
|      | Tow Cable Retainers, Clamps and Brackets .....  | 0274 00 |
|      | Spare Headlight Mount Base Assembly .....   | 0275 00 |

**Group 20 Winches, Spade and Hoist Boom**

|      |   |         |
|------|---|---------|
| 2001 | Winches and Related Parts                                     |         |
|      | Hoist Winch Assembly, Support, Guard and Related Parts .....  | 0276 00 |
|      | Hoist Winch Assembly and Motor .....                          | 0277 00 |
|      | Hoist Winch Hydraulic Motor 12366656 .....                    | 0278 00 |
|      | Hoist Winch Roller Attachment and Wire Rope Shield .....      | 0279 00 |
|      | Main Winch, Main Winch Support and Wire Rope Assembly .....   | 0280 00 |
|      | Main Winch Assembly, 9323A38 .....                            | 0281 00 |
|      | Main Winch Assembly, 9323A39F2 .....                          | 0282 00 |
|      | Main Winch Roller Assembly and Limit Switches .....           | 0283 00 |
|      | Main Winch Manifold and Related Parts .....                   | 0284 00 |
|      | Hydraulic Cylinder and Level Winder Plate Assembly .....      | 0285 00 |
|      | Level Winder Hydraulic Cylinder, 12364518 .....               | 0286 00 |
|      | Level Winder Plate Assembly and Roller Bracket Assembly ..... | 0287 00 |
|      | Level Winder Spindle and Related Parts .....                  | 0288 00 |
|      | Main Winch Cover and Cable Armor Plates and Guides .....      | 0289 00 |
|      | Auxiliary Winch and Hoses and Fittings .....                  | 0290 00 |
|      | Auxiliary Winch Drum and Related Parts .....                  | 0291 00 |
|      | Auxiliary Winch Hydraulic Motor Assembly, 12366648 .....      | 0292 00 |
|      | Auxiliary Winch Spooling Roller and Roller Bracket .....      | 0293 00 |
| 2002 | Hydraulic Control Valve Manifold                              |         |
|      | Hydraulic Control Panel Shield .....                          | 0294 00 |
|      | Hydraulic Control Panel Shield Instruction Plates .....       | 0295 00 |
| 2005 | Spade and Related Parts                                       |         |
|      | Spade Lock Housing Assembly and Related Parts .....           | 0296 00 |
|      | Spade, Cylinder and Related Parts .....                       | 0297 00 |
|      | Spade Assembly, 12364458 .....                                | 0298 00 |
|      | Spade Cylinder Lines and Fittings .....                       | 0299 00 |
|      | Lubricating Hoses and Lines (Spade Cylinder) .....            | 0300 00 |

TABLE OF CONTENTS - CONTINUED

WP SEQUENCE NO.

|      |   |         |
|------|---|---------|
| 2007 | Hoist Boom Assembly and Related Parts                     |         |
|      | Hoist Boom, Cylinders and Related Parts .....             | 0301 00 |
|      | Hoist Boom, Cylinders and Related Parts (Continued) ..... | 0302 00 |
|      | Hoisting Boom Hydraulic Cylinder Assembly, E2040 .....    | 0303 00 |
|      | Hoisting Boom Cover and Plate .....                       | 0304 00 |

**Group 22 Body, Chassis or Hull Accessory Items**

|      |  |         |
|------|--|---------|
| 2207 | Personnel Heater Assembly and Related Components                         |         |
|      | Personnel Heater Assembly and Related Parts .....                        | 0305 00 |
|      | Personnel Heater Fuel Pump and Related Parts .....                       | 0306 00 |
| 2210 | Data Plates and Instruction Holders                                      |         |
|      | Fuel Control Valve Identification Plates .....                           | 0307 00 |
|      | Vehicle Identification Plate, CARC Painted and Shipping Data Plate ..... | 0308 00 |
|      | Stowage Instruction and Identification Plates and Decals .....           | 0309 00 |
|      | Battery Connection Diagram Label .....                                   | 0310 00 |

**Group 24 Hydraulic System**

|      |   |         |
|------|---|---------|
| 2401 | Pump and Motor  |         |
|      | Hydraulic Pump and Power Take-Off Clutch and Related Parts .....                  | 0311 00 |
|      | Power Take-Off Propeller Shaft .....  | 0312 00 |
|      | Hydraulic Pump Assembly, 12365937 .....   | 0313 00 |
|      | Fuel Transfer Pump Hydraulic Motor and Shaft Coupling .....                       | 0314 00 |
|      | Auxiliary Power Unit Hydraulic Pump and Related Parts .....                       | 0315 00 |
|      | Auxiliary Power Unit Hydraulic Pump and Related Parts (HATZ) .....                | 0316 00 |
| 2402 | Manifold and/or Control Valves  |         |
|      | Boom Cylinder Flow Regulating Valve .....   | 0317 00 |
|      | Safety Level Valve and Related Parts .....  | 0318 00 |
|      | Hydraulic Filter Manifold, Block and Related Parts .....                          | 0319 00 |
|      | Hydraulic Filter Valve Manifold Assembly, 12364578 .....                          | 0320 00 |
|      | Defuel Compartment Control and Regulator Valve .....                              | 0321 00 |
|      | Main and Hoist Winch Directional Control Valve and Related Parts .....            | 0322 00 |
|      | Main and Hoist Winch Manifold, SK43-A53-0168-D .....                              | 0323 00 |
|      | Main Winch Power Reduction Manifold Mounting Brackets and Related Parts .....     | 0324 00 |
|      | Main Winch Power Reduction Manifold and Related Parts .....                       | 0325 00 |
|      | Spade Release Valve, Check Valve and Data Plate .....                             | 0326 00 |
|      | Hydraulic Control Valve Manifold, Boom Shut-Off Valve and Cross Port              |         |
|      | Relief/Anticavitation Manifold Assembly .....                                     | 0327 00 |
|      | Hydraulic Control Valve Manifold .....  | 0328 00 |
|      | Right Hand Boom Limit Valve and Related Parts .....                               | 0329 00 |
|      | Left Hand Boom Limit Valve and Related Parts .....                                | 0330 00 |
|      | Auxiliary Power Unit Pressure Switch and Related Parts .....                      | 0331 00 |
| 2406 | Hydraulic Lines and Fittings  |         |
|      | Hydraulic Pump Lines and Fittings .....   | 0332 00 |
|      | Stayline Cylinder and Fuel Transfer Pump Hydraulic Motor Lines and Fittings ..... | 0333 00 |
|      | Safety Level Valve Lines and Fittings .....                                       | 0334 00 |
|      | Filter Manifold Lines and Fittings (Old Configuration) .....                      | 0335 00 |
|      | Filter Manifold Lines and Fittings (New Configuration) .....                      | 0336 00 |
|      | Filter Manifold Lines and Fittings (Continued) .....                              | 0337 00 |
|      | Defuel Compartment Hydraulic Fittings .....                                       | 0338 00 |
|      | Flow Regulating Valve and Fuel Control Valve Lines and Fittings .....             | 0339 00 |
|      | Main and Hoist Winch Manifold Valve Lines and Fittings .....                      | 0340 00 |
|      | Main Winch Power Reduction Manifold Lines and Fittings .....                      | 0341 00 |

TABLE OF CONTENTS - CONTINUED

WP SEQUENCE NO.

|      |   |         |
|------|---|---------|
|      | Spade Release Valve and Check Valve Lines and Fittings .....          | 0342 00 |
|      | Boom Shut-Off Valve and Manifold Assembly Lines and Fittings .....    | 0343 00 |
|      | Hydraulic Control Valve Manifold Lines and Fittings .....             | 0344 00 |
|      | Hydraulic Control Valve Manifold Lines and Fittings (Continued) ..... | 0345 00 |
|      | Hydraulic Control Valve Manifold Lines and Fittings (Continued) ..... | 0346 00 |
|      | Hydraulic Control Valve Manifold Lines and Fittings (Continued) ..... | 0347 00 |
|      | Boom Limit Valve Lines and Fittings .....                             | 0348 00 |
|      | Hoist Winch Lines and Fittings .....                                  | 0349 00 |
|      | Hoist Boom Actuating Cylinder Lines and Fittings .....                | 0350 00 |
|      | Auxiliary Power Unit Pressure Switch Lines and Fittings .....         | 0351 00 |
|      | Reservoir Lines and Fittings (Old Configuration) .....                | 0352 00 |
|      | Reservoir Lines and Fittings (New Configuration) .....                | 0353 00 |
|      | Retainer Assembly .....   | 0354 00 |
|      | Hose Connection Panel .....   | 0355 00 |
| 2408 | Liquid Tanks or Reservoirs  |         |
|      | Hydraulic Reservoir Assembly .....                                    | 0356 00 |

**Group 29 Generator and Engine**

|      |  |         |
|------|--|---------|
| 2901 | Generator and Engine Assembly  |         |
|      | Auxiliary Power Unit with Generator and Attaching Hardware .....   | 0357 00 |
|      | Auxiliary Power Unit with Generator and Attaching Hardware (HATZ) .....  | 0358 00 |
| 2910 | Engine Assembly  |         |
|      | Auxiliary Power Unit, Engine Support, and Related Parts .....  | 0359 00 |
|      | Auxiliary Power Unit, Engine Support, Sump Fan, Bracket, and Related Parts<br>(HATZ) .....   | 0360 00 |
| 2916 | Engine Lubrication System  |         |
|      | Auxiliary Power Unit Oil Filter, Saber Gauge, Oil Drain Lines and Related<br>Parts .....   | 0361 00 |
|      | Auxiliary Power Unit Oil Drain Hose (HATZ) .....   | 0362 00 |
|      | Auxiliary Power Unit Remote Oil Filter Assembly, Saber Gauge, Oil Filter<br>Assembly, Lifting Bracket and Related Parts (HATZ) ..... | 0363 00 |
| 2919 | Driving Mechanisms   |         |
|      | Auxiliary Power Unit Driving Mechanism .....   | 0364 00 |
|      | Auxiliary Power Unit Driving Mechanism (HATZ) .....  | 0365 00 |
| 2933 | Engine Air Cleaner   |         |
|      | Auxiliary Power Unit Intake Air Cleaner Assembly .....   | 0366 00 |
| 2937 | Engine Fuel Filter   |         |
|      | Auxiliary Power Unit Fuel Filter Assembly and Related Parts .....  | 0367 00 |
| 2938 | Engine Priming System Lines and Pumps  |         |
|      | Auxiliary Power Unit Engine Fuel Lines and Fittings .....  | 0368 00 |
|      | Auxiliary Power Unit Engine Fuel Lines and Fittings (HATZ) .....   | 0369 00 |
|      | Auxiliary Power Unit Engine Fuel Pumps and Fuel Lines (HATZ) .....   | 0370 00 |
|      | Auxiliary Power Unit Fuel Lines (HATZ) .....   | 0371 00 |
|      | Auxiliary Power Unit Fuel Shut-Off Solenoid and Throttle Adjustment Linkage<br>(HATZ) .....  | 0372 00 |

TABLE OF CONTENTS - CONTINUED

WP SEQUENCE NO.

|      |   |         |
|------|---|---------|
| 2941 | Engine Muffler, Exhaust and Tail Pipes  |         |
|      | Auxiliary Power Unit Muffler and Exhaust System .....   | 0373 00 |
|      | Auxiliary Power Unit Muffler and Exhaust System (HATZ) .....  | 0374 00 |
|      | Auxiliary Power Unit Exhaust Manifold and Fan Screen (HATZ) .....   | 0375 00 |
|      |   |         |
| 2952 | Engine Cowling Deflectors, Air Ducts and Shrouds  |         |
|      | Auxiliary Power Unit Ducting .....  | 0376 00 |
|      | Auxiliary Power Unit Ducting (HATZ) .....   | 0377 00 |
|      | Auxiliary Power Unit Hot Air Duct and Exhaust Stub (HATZ) .....   | 0378 00 |
|      | Auxiliary Power Unit Engine Shrouds .....   | 0379 00 |
|      | Auxiliary Power Unit Heat Shields, Oil Drain Lines and Fittings, and Fuel<br>Pump and Relay Box Mounting Plate (HATZ) ..... | 0380 00 |
|      | Auxiliary Power Unit Heat Shield, Glow Plug and Air Intake Adapter (HATZ) .....   | 0381 00 |
|      |   |         |
| 2960 | Sending Units   |         |
|      | Auxiliary Power Unit Oil Pressure Transmitter .....   | 0382 00 |
|      |   |         |
| 2961 | Generator   |         |
|      | Auxiliary Power Unit Generator and Mounting Studs .....   | 0383 00 |
|      | Auxiliary Power Unit Generator, Relay Box, Starter Relay and Related<br>Parts (HATZ) .....                                  | 0384 00 |
|      |   |         |
| 2963 | Circuit Breakers, Wiring and Switches   |         |
|      | Auxiliary Power Unit Diode and Mounting Plate .....   | 0385 00 |
|      | Auxiliary Power Unit Preheat Relay, Diode, Hour Meter and Related<br>Parts (HATZ) .....                                     | 0386 00 |
|      | Auxiliary Power Unit Relay .....  | 0387 00 |
|      | Auxiliary Power Unit Door Fan and Mounting Plates (HATZ) .....  | 0388 00 |
|      | Wiring Harness 3W704 .....  | 0389 00 |
|      | Wiring Harness 3W704 (HATZ) .....   | 0390 00 |
|      | Lead Assembly 3W705 .....   | 0391 00 |
|      | Lead Assembly 3W705 (HATZ) .....  | 0392 00 |
|      | Lead Assembly 3W706 .....   | 0393 00 |
|      | Lead Assembly 3W706 (HATZ) .....  | 0394 00 |
|      | Wiring Harness 3W711 .....  | 0395 00 |
|      | Wiring Harness 3W711 (HATZ) .....   | 0396 00 |
|      | Lead Assembly 3W727 .....   | 0397 00 |
|      | Lead Assembly 3W727 (HATZ) .....  | 0398 00 |
|      | Wiring Harness 3W730 (HATZ) .....   | 0400 00 |
|      | Lead Assembly 11671380-1 .....  | 0401 00 |
|      | Lead Assembly 11671380-2 .....  | 0402 00 |
|      | Lead Assembly 3W732 (HATZ) .....  | 0403 00 |
|      | Lead Assembly 3W733 (HATZ) .....  | 0404 00 |

**Group 33 Deep Water Fording**

|      |   |         |
|------|---|---------|
| 3305 | Deep Water Fording Kits                                   |         |
|      | Deep Water Fording Kit Inlet Ducting .....                | 0405 00 |
|      | Deep Water Fording Waterproofing Kit .....                | 0406 00 |
|      | Deep Water Fording Kit and Bilge Pump Assembly .....      | 0407 00 |
|      | Deep Water Fording Kit Bilge Pump and Related Parts ..... | 0408 00 |
|      | Bilge Pump Assembly .....                                 | 0409 00 |
|      | Deep Water Fording Kit Seal Assemblies .....              | 0410 00 |
|      | Deep Water Fording Kit Cap and Clamp .....                | 0411 00 |
|      | Deep Water Fording Kit Exhaust Pipe .....                 | 0412 00 |

TABLE OF CONTENTS - CONTINUED

WP SEQUENCE NO.

|      |  |         |
|------|--|---------|
| 3307 | Special Purpose Kits   |         |
|      | Smoke Generating System .....  | 0413 00 |
|      | Smoke Grenade Launcher Power Switch and Lamp Assembly .....  | 0414 00 |
|      | Smoke Grenade Launcher Bracket and Wiring Harnesses .....  | 0415 00 |
|      | Enhanced Diagnostics, Remote Terminal Unit Assembly .....  | 0416 00 |
|      | Enhanced Diagnostics, Remote Terminal Unit, 12365133 .....   | 0417 00 |
|      | Enhanced Diagnostics, Nose Piece Transducers and Related Parts .....   | 0418 00 |
|      | Enhanced Diagnostics, Nose Piece Transducers and Related Parts<br>(Continued) .....  | 0419 00 |
|      | Enhanced Diagnostics, Direction Control Valve, Main Winch Power<br>Reduction Manifold, Transducers and Related Parts ..... | 0420 00 |
|      | Enhanced Diagnostics, Filter Valve Manifold Transducers and Related Parts .....  | 0421 00 |
|      | Enhanced Diagnostics, Hydraulic Pump and Thermostatic Valve Transducers<br>and Related Parts .....                         | 0422 00 |
|      | Enhanced Diagnostics, Left and Right Boom Limit Valves Transducers<br>and Related Parts .....                              | 0423 00 |
|      | Enhanced Diagnostics, Boom Shut-Off Valve and Hoist Winch Transducers<br>and Related Parts .....                           | 0424 00 |
|      | Enhanced Diagnostics, Operator Control Valve Transducers and Related<br>Parts .....  | 0425 00 |
|      | Enhanced Diagnostics, Operator Control Valve Transducers and Related<br>Parts (Continued) .....                            | 0426 00 |
|      | Enhanced Diagnostics, Operator Control Valve Transducers and Related<br>Parts (Continued) .....                            | 0427 00 |
|      | Wiring Harness 2W505 .....   | 0428 00 |
|      | Wiring Harness 3W501 .....   | 0429 00 |
|      | Wiring Harness 4W502 .....   | 0430 00 |
|      | Wiring Harness 4W503 .....   | 0431 00 |
|      | Wiring Harness 4W504 .....   | 0432 00 |
|      | Wiring Harness 4W506 .....   | 0433 00 |
|      | Wiring Harness 4W507 .....   | 0434 00 |
|      | Wiring Harness 4W508 .....   | 0435 00 |
|      | Enhanced Diagnostics System Wiring Harness Attaching Parts .....   | 0436 00 |
|      | Enhanced Diagnostics System Wiring Harness Attaching Parts (Continued) .....   | 0437 00 |
|      | Enhanced Diagnostics System Wiring Harness Attaching Parts (Continued) .....   | 0438 00 |
|      | Enhanced Diagnostics System Wiring Harness Attaching Parts (Continued) .....   | 0439 00 |
|      | Enhanced Diagnostics System Wiring Harness Attaching Parts (Continued) .....   | 0440 00 |

**Group 44 Welding, Metalizing, Metal Heating and Plating Equipment**

|      |  |         |
|------|--|---------|
| 4415 | Head, Torch and Gun Utilizing Components<br>Acetylene Cylinder Hose Assembly ..... | 0441 00 |
|------|--|---------|

**Group 47 Gauges (Non-Electrical)**

|      |  |         |
|------|--|---------|
| 4701 | Instrument (Speed and Distance)<br>Mechanical Tachometer and Speedometer and Engine Fuel Pump<br>Adapter Plate ..... | 0442 00 |
|------|--|---------|

**Group 76 Fire Fighting Equipment Components**

|      |  |         |
|------|--|---------|
| 7639 | Fixed Fire Fighting Equipment (Vehicular)<br>Fixed Fire Fighting Equipment – Rear Half ..... | 0443 00 |
|      | Fixed Fire Fighting Equipment – Front Half .....   | 0444 00 |
|      | Fixed Fire Extinguisher Actuator Cable Assembly and Related Parts .....                      | 0445 00 |
|      | Fixed Fire Extinguisher Valve Assembly and Related Parts .....                               | 0446 00 |
|      | Fixed Fire Extinguisher Cylinders and Lines .....  | 0447 00 |
|      | Fire Extinguisher Cylinder Assembly, 12257169 .....  | 0448 00 |

TABLE OF CONTENTS - CONTINUED

WP SEQUENCE NO.

**Group 91 Chemical, Biological, and Radiological (CBR) Equipment**

|      |  |         |
|------|--|---------|
| 9111 | Gas Particulate Filter Units                                   |         |
|      | Collective Protective Kit .....                                | 0449 00 |
|      | Collective Protective Kit (Continued) .....                    | 0450 00 |
|      | M2A2 Air Purifier, D5-19-1772 .....                            | 0451 00 |
|      | Air Purifier Control Unit Enclosure Assembly, 12448166 .....   | 0452 00 |
|      | Air Purifier Control Unit Enclosure Assembly (Continued) ..... | 0453 00 |
|      | M3 Air Heater .....  | 0454 00 |
|      | Wiring Harness 4W305 .....                                     | 0455 00 |
|      | Wiring Harness 4W306 .....                                     | 0456 00 |
|      | Wiring Harness 4W307 .....                                     | 0457 00 |

**Group 94 Repair Kits**

|      |                   |         |
|------|-------------------|---------|
| 9401 | Repair Kits       |         |
|      | Repair Kits ..... | 0458 00 |

**Group 95 General Use Standardized Parts**

|      |                     |         |
|------|---------------------|---------|
| 9501 | Bulk Material       |         |
|      | Bulk Material ..... | 0459 00 |

**Group 26 Tools & Test Equipment**

|      |  |         |
|------|--|---------|
| 2604 | Special Tools  |         |
|      | Special Tools .....  | 0460 00 |
|      | Special Tools (Continued) .....                                    | 0461 00 |
|      | Special Tools (Continued) .....                                    | 0462 00 |
|      | Hydraulic Gauge Testing .....                                      | 0463 00 |
| 2606 | Test Equipment   |         |
|      | Auxiliary Ground Hop Kit, 12366015 .....                           | 0464 00 |
|      | Main Winch Ground Hop Kit, 12366001 .....                          | 0465 00 |
|      | Main Winch Ground Hop Kit, 12366001-1 (Enhanced Diagnostics) ..... | 0466 00 |
|      | Engine Ground Hop Kit, 12365729 .....                              | 0467 00 |
|      | Ground Hop Air Filtration Kit, 57K1759 .....                       | 0468 00 |
|      | Adjusting Link Test Fixture and Related Components .....           | 0469 00 |
|      | M2A2 Air Purifier, D5-19-1772 .....                                | 0451 00 |
|      | Air Purifier Control Unit Enclosure Assembly, 12448166 .....       | 0452 00 |
|      | Air Purifier Control Unit Enclosure Assembly (Continued) .....     | 0453 00 |
|      | M3 Air Heater .....  | 0454 00 |
|      | Wiring Harness 4W305 .....   | 0455 00 |
|      | Wiring Harness 4W306 .....   | 0456 00 |
|      | Wiring Harness 4W307 .....   | 0457 00 |

**Group 94 Repair Kits**

|      |                   |         |
|------|-------------------|---------|
| 9401 | Repair Kits       |         |
|      | Repair Kits ..... | 0458 00 |

**Group 95 General Use Standardized Parts**

|      |                     |         |
|------|---------------------|---------|
| 9501 | Bulk Material       |         |
|      | Bulk Material ..... | 0459 00 |

TABLE OF CONTENTS - CONTINUED

WP SEQUENCE NO.

Group 26 Tools & Test Equipment

|      |  |         |
|------|--|---------|
| 2604 | Special Tools  |         |
|      | Special Tools .....  | 0460 00 |
|      | Special Tools (Continued) .....                                    | 0461 00 |
|      | Special Tools (Continued) .....                                    | 0462 00 |
|      | Hydraulic Gauge Testing .....                                      | 0463 00 |
|      |  |         |
| 2607 | Test Equipment   |         |
|      | Auxiliary Ground Hop Kit, 12366015 .....                           | 0464 00 |
|      | Main Winch Ground Hop Kit, 12366001 .....                          | 0465 00 |
|      | Main Winch Ground Hop Kit, 12366001-1 (Enhanced Diagnostics) ..... | 0466 00 |
|      | Engine Ground Hop Kit, 12365729 .....                              | 0467 00 |
|      | Ground Hop Air Filtration Kit, 57K1759 .....                       | 0468 00 |
|      | Adjusting Link Test Fixture and Related Components .....           | 0469 00 |

INDEXES

|                                   |         |
|-----------------------------------|---------|
| National Stock Number Index ..... | 0470 00 |
| Part Number Index .....           | 0471 00 |



**DIRECT SUPPORT AND  
GENERAL SUPPORT MAINTENANCE  
REPAIR PARTS AND SPECIAL TOOLS LIST**

**INTRODUCTION**

**SCOPE**

This RPSTL lists and authorizes spares and repair parts; special tools; test, measurement, and diagnostic equipment (TMDE); other special support equipment required for performance of direct support; and general support equipment required for performance of the M88A2 Recovery Vehicle. It authorizes the requisitioning, issue, and disposition of spares, repair parts and special tools as indicated by the Source, Maintenance, and Recoverability (SMR) codes.

**GENERAL**

In addition to the Introduction work package, this RPSTL is divided into the following work packages.

1. Repair Parts List Work Packages. Work packages containing lists of spares and repair parts authorized by this RPSTL for use in the performance of maintenance. These work packages also include parts which must be removed for replacement of the authorized parts. Parts lists are composed of functional groups in ascending alpha-numeric sequence, with the parts in each group listed in ascending figure and item number sequence. Sending units, brackets, filters, and bolts are listed with the component they mount on. Bulk materials are listed by item name in FIG. BULK at the end of the work packages. Repair parts kits are listed separately in their own functional group and work package. Repair parts for repairable special tools are also listed in a separate work package. Items listed are shown on the associated illustration.
2. Special Tools List Work Packages. Work packages containing lists of special tools, special TMDE, and special support equipment authorized by this RPSTL (as indicated by Basis of Issue (BOI) information in the DESCRIPTION AND USABLE ON CODE (UOC) column). Tools that are components to common tool sets and/or Class VII are not listed.
3. Cross-reference Index Work Packages. There are two cross-reference index work packages in this RPSTL: the National Stock Number (NSN) and the Part Number (P/N) index work packages. The National Stock Number Index work package refers you to the figure and item number. The Part Number Index work package refers you to the figure and item number.

**EXPLANATION OF COLUMNS IN THE REPAIR PARTS AND SPECIAL TOOLS LIST WORK PACKAGES**

**ITEM NO.** (Column (1)). Indicates the number used to identify items called out in the illustration.

**SMR CODE** (Column (2)). The SMR code containing supply/requisitioning information, maintenance level authorization criteria, and disposition instruction, as shown in the following breakout:

| <u>Source Code</u>                                    | <u>Maintenance Code</u>   | <u>Recoverability Code</u>   |
|---|---|--|
| <u>XXxxx</u>  | <u>xxXXX</u>  | <u>xxxxX</u>   |
| 1 <sup>st</sup> two positions:<br>How to get an item. | 3 <sup>rd</sup> position:<br>Who can install, replace, or use the item. | 4 <sup>th</sup> position:<br>Who can do complete repair* on the item.                  |
|   |   | 5 <sup>th</sup> position:<br>Who determines disposition action on unserviceable items. |

\*Complete Repair: Maintenance capacity, capability, and authority to perform all corrective maintenance tasks of the "Repair" function in a use/user environment in order to restore serviceability to a failed item.

**Source Code.** The source code tells you how you get an item needed for maintenance, repair, or overhaul of an end item/equipment. Explanations of source codes follow:

| <u>Source Code</u> | <u>Application/Explanation</u>          |
|--------------------|---|
| PA                 | Stock items; use the applicable NSN     |
| PB                 | to requisition/request items with these |
| PC                 | source codes. They are authorized to    |
| PD                 | the level indicated by the code entered |

## EXPLANATION OF COLUMNS IN THE REPAIR PARTS AND SPECIAL TOOLS LIST WORK PACKAGES - CONTINUED

PE in the 3<sup>rd</sup> position of the SMR code.  
 PF  
 PG

### NOTE

|                                    |   |
|------------------------------------|---|
|                                    | Items coded PC are subject to deterioration.              |
| KD                                 | Items with these codes are not to be                      |
| KF                                 | requested/requisitioned individually. They                |
| KB                                 | are part of a kit which is authorized to the              |
|                                    | maintenance level indicated in the 3 <sup>rd</sup>        |
|                                    | position of the SMR code. The complete                    |
|                                    | kit must be requisitioned and applied.                    |
| MO-Made at unit/<br>AVUM level     | Items with these codes are not to be                      |
| MF-Made at DS/<br>AVILM level      | requisitioned/requested individually. They                |
| MH-Made at GS<br>level             | must be made from bulk material which is                  |
| ML-Made at SRA                     | identified by the P/N in the DESCRIPTION                  |
| MD-Made at depot                   | AND USABLE ON CODE (UOC) column                           |
|                                    | and listed in the bulk material group work                |
|                                    | package of the RPSTL. If the item is                      |
|                                    | authorized to you by the 3 <sup>rd</sup> position code of |
|                                    | the SMR code, but the source code indicates               |
|                                    | it is made at higher level, order the item                |
|                                    | from the higher level of maintenance.                     |
| AO-Assembled by<br>unit/AVUM level | Items with these codes are not to be                      |
| AF-Assembled by<br>DS/AVIM level   | requested/requisitioned individually. The                 |
| AH-Assembled by<br>GS level        | parts that make up the assembled item must                |
| AL-Assembled by<br>SRA             | be requisitioned or fabricated and assembled              |
| AD-Assembled by<br>depot           | at the level of maintenance indicated by the              |
| XA                                 | source code. If the 3 <sup>rd</sup> position of the SMR   |
|                                    | code authorizes you to replace the item,                  |
|                                    | but the source code indicates the item is                 |
|                                    | assembled at a higher level, order the item               |
|                                    | from the higher level of maintenance.                     |
|                                    | Do not requisition an "XA" coded item.                    |
|                                    | Order the next higher assembly. (Refer                    |
|                                    | to NOTE below.)   |
| XB                                 | If an item is not available from salvage,                 |
|                                    | order it using the CAGEC and P/N.                         |
| XC                                 | Installation drawings, diagrams, instruction sheets,      |
|                                    | field service drawings; identified by manufacturer's      |
|                                    | P/N.  |
| XD                                 | Item is not stocked. Order an XD-coded item through       |
|                                    | normal supply channels using the CAGEC and P/N            |
|                                    | given, if no NSN is available.                            |

### NOTE

Cannibalization or controlled exchange, when authorized, may be used as a source of supply for items with the above source codes except for those items source coded "XA" or those aircraft support items restricted by requirements of AR 750-1.

**Maintenance Code.** Maintenance codes tell you the level(s) of maintenance authorized to use the repair support items. The maintenance codes are entered in the third and fourth positions of the SMR code as follows:

**Third Position.** The maintenance code entered in the third position tells you the lowest maintenance level authorized to remove, replace, and use an item. The maintenance code entered in the third position will indicate authorization to the following levels of maintenance:

## EXPLANATION OF COLUMNS IN THE REPAIR PARTS AND SPECIAL TOOLS LIST WORK PACKAGES - CONTINUED

### Maintenance Code

### Application/Explanation

|   |   |  |
|---|---|--|
| C | - | Crew or operator maintenance done within unit/AVUM maintenance.        |
| O | - | Unit level/AVUM maintenance can remove, replace, and use the item.     |
| F | - | Direct support/AVIM maintenance can remove, replace, and use the item. |
| H | - | General support maintenance can remove, replace, and use the item.     |
| L | - | Specialized repair activity can remove, replace, and use the item.     |
| D | - | Depot can remove, replace, and use the item.                           |

Fourth Position. The maintenance code entered in the fourth position tells you whether or not the item is to be repaired and identifies the lowest maintenance level with the capability to do complete repair (perform all authorized repair functions).

### NOTE

Some limited repair may be done on the item at the lower level of maintenance, if authorized by the Maintenance Allocation Chart (MAC) and SMR codes.

### Maintenance Code

### Application/Explanation

|   |   |   |
|---|---|---|
| O | - | Unit/AVUM is the lowest level that can do complete repair of the item.  |
| F | - | Direct support/AVIM is the lowest level that can do complete repair of the item.  |
| H | - | General support is the lowest level that can do complete repair of the item.  |
| L | - | Specialized repair activity is the lowest level that can do complete repair of the item.  |
| D | - | Depot is the lowest level that can do complete repair of the item.  |
| Z | - | Nonreparable. No repair is authorized.  |
| B | - | No repair is authorized. No parts or special tools are authorized for maintenance of "B" coded item. However, the item may be reconditioned by adjusting, lubricating, etc., at the user level. |

**Recoverability Code.** Recoverability codes are assigned to items to indicate the disposition action on unserviceable items. The recoverability code is shown in the fifth position of the SMR code as follows:

### Recoverability Code

### Application/Explanation

|   |   |  |
|---|---|--|
| Z | - | Nonreparable item. When unserviceable, condemn and dispose of the item at the level of maintenance shown in the third position of the SMR code.    |
| O | - | Reparable item. When uneconomically repairable, condemn and dispose of the item at the unit level.   |
| F | - | Reparable item. When uneconomically repairable, condemn and dispose of the item at the direct support level.                                       |
| H | - | Reparable item. When uneconomically repairable, condemn and dispose of the item at the general support level.                                      |
| D | - | Reparable item. When beyond lower level repair capability, return to depot. Condemnation and disposal of item is not authorized below depot level. |
| L | - | Reparable item. Condemnation and disposal not authorized below Specialized Repair Activity (SRA).  |

## EXPLANATION OF COLUMNS IN THE REPAIR PARTS AND SPECIAL TOOLS LIST WORK PACKAGES - CONTINUED

- A - Item requires special handling or condemnation procedures because of specific reasons (such as precious metal content, high dollar value, critical material, or hazardous material). Refer to appropriate manuals/directives for specific instructions.

**NSN** (Column (3)). The NSN for the item is listed in this column.

**CAGEC** (Column (4)). The Commercial and Government Entity Code (CAGEC) is a five-digit code which is used to identify the manufacturer, distributor, or Government agency/activity that supplies the item.

**PART NUMBER** (Column (5)). Indicates the primary number used by the manufacturer (individual, company, firm, corporation, or Government activity), which controls the design and characteristics of the item by means of its engineering drawings, specifications, standards, and inspection requirements to identify an item or range of items.

### NOTE

When you use an NSN to requisition an item, the item you receive may have a different P/N from the number listed.

**DESCRIPTION AND USABLE ON CODE (UOC)** (Column (6)). This column includes the following information:

1. The federal item name, and when required, a minimum description to identify the item.
2. P/Ns of bulk materials are referenced in this column in the line entry to be manufactured or fabricated.
3. Hardness Critical Item (HCI). A support item that provides the equipment with special protection from Electromagnetic Pulse (EMP) damage during a nuclear attack.
4. The statement END OF FIGURE appears just below the last item description in column (6) for a given figure in both the repair parts list and special tools list work packages.

**QTY** (Column (7)). The QTY (quantity per figure) column indicates the quantity of the item used in the breakout shown on the illustration/figure, which is prepared for a functional group, subfunctional group, or an assembly. A "V" appearing in this column instead of a quantity indicates that the quantity is variable and quantity may change from application to application.

## EXPLANATION OF CROSS-REFERENCE INDEX WORK PACKAGES FORMAT AND COLUMNS

1. National Stock Number (NSN) Index Work Package.

**STOCK NUMBER** Column. This column lists the NSN in National Item Identification Number (NIIN) sequence. The NIIN consists of the last nine digits of the NSN.

NSN  
 (e.g., 5385-01-574-1476)  
NIIN

When using this column to locate an item, ignore the first four digits of the NSN. However, the complete NSN should be used when ordering items by stock number.

**FIG.** Column. This column lists the number of the figure where the item is identified/located. The figures are in numerical order in the repair parts list and special tools list work packages.

**ITEM** Column. The item number identifies the item associated with the figure listed in the adjacent FIG. column. This item is also identified by the NSN listed on the same line.

2. Part Number (P/N) Index Work Package. P/Ns in this index are listed in ascending numeric-alpha sequence (vertical arrangement of number and letter combinations which places the first digit or letter of each group in order 0 through 9, followed by the letters A through Z and each following digit or letter in like order).

**PART NUMBER** Column. Indicates the P/N assigned to the item.

**FIG.** Column. This column lists the number of the figure where the item is identified/located in the repair parts list and special tools list work packages.

**ITEM** Column. The item number is in the number assigned to the item as it appears in the figure referenced in the adjacent figure number column.

**SPECIAL INFORMATION**

**UOC.** The UOC appears in the lower left corner of the Description Column heading. Usable on codes are shown as "UOC:..." in the Description Column (justified left) on the first line under the applicable item/nomenclature. Uncoded items are applicable to all models. Identification of the UOCs used in the RPSTL are:

| <u>Code</u> | <u>USED ON</u>                          |
|-------------|---|
| CDT         | XT-1410-4 Transmission                  |
| TWC         | XT-1410-5A Transmission                 |
| APW         | Model DJBMA (ONAN) Diesel Engine        |
| APH         | Model 2G40-HDA9304 (HATZ) Diesel Engine |

**Fabrication Instructions.** Bulk materials required to manufacture items are listed in the bulk material functional group of this RPSTL. Part numbers for bulk material are also referenced in the Description Column of the line item entry for the item to be manufactured/fabricated. Detailed fabrication instructions for items source coded to be manufactured or fabricated are found in TM 9-2815-247-34.

**Item Numbers.** Items which have the word BULK in the figure column will have an index number shown in the item number column. This index number is a cross-reference between the NSN / P/N index work packages and the bulk material list in the repair parts list work package.

**Associated Publications.** The publications listed below pertain to Recovery Vehicle, Full Tracked, Medium M88A1 and Recovery Vehicle, Full Tracked, Heavy M88A2.

| <u>Publication</u> | <u>Short Title</u>  |
|--------------------|---|
| TM 9-2350-292-10   | Operator's manual for Recovery vehicle, full tracked, heavy M88A2 (NSN 2350-01-390-4683)  |
| TM 9-2350-292-20   | Organizational maintenance manual: Recovery vehicle, full tracked, heavy M88A2 (NSN 2350-01-390-4683)   |
| TM 9-2350-292-34   | Direct and general support maintenance manual: Recovery vehicle, full tracked, heavy M88A2 (NSN 2350-01-390-4683)   |
| TM 9-2815-247-34   | Direct support and general support maintenance manual: Engine with container; turbosupercharged, oil-cooled generator, diesel (Model ADVS-1790-8CR)                   |
| TM 9-2815-247-34P  | Direct support and general support maintenance repair parts and special tools list (including depot maintenance repair parts and special tools): Engine AVDS-1790-8CR |
| TM 9-2920-232-34&P | Direct support and general support maintenance manual (including repair parts and special tools list) for Starter assembly, engine                                    |
| TM 9-2920-252-34&P | Direct support and general support maintenance manual (including repair parts and special tools list) for Generator assembly, engine (650 AMP)                        |
| DMWR 9-2920-252    | Depot Maintenance Work Requirements: 650 AMP generator (NSN 2920-00-441-8137)   |
| TM 9-2990-205-34&P | Direct support and general support maintenance manual (including repair parts and special tools list) for Turbosupercharger, engine                                   |

## HOW TO LOCATE REPAIR PARTS

1. When NSNs or P/Ns are not known.

First. Using the table of contents, determine the assembly group to which the item belongs. This is necessary since figures are prepared for assembly groups and subassembly groups, and lists are divided into the same groups.

Second. Find the figure covering the functional group or the subfunctional group to which the item belongs.

Third. Identify the item on the figure and note the number(s).

Fourth. Look in the repair parts list work packages for the figure and item numbers. The NSNs and part numbers are on the same line as the associated item numbers.

2. When NSN is known.

First. If you have the NSN, look in the Stock Number column of the NSN index work package. The NSN is arranged in NIIN sequence. Note the figure and item number next to the NSN.

Second. Turn to the figure and locate the item number. Verify that the item is the one you are looking for.

3. When P/N is known.

First. If you have the P/N and not the NSN, look in the Part Number column of the P/N index work package. Identify the figure and item number.

Second. Look up the item on the figure in the applicable repair parts list work package.

## ABBREVIATIONS

| <u>Abbreviation</u> | <u>Explanation</u>                          |
|---------------------|---|
| BOI                 | Basis of Issue                              |
| FIG                 | Figure                                      |
| MAC                 | Maintenance Allocation Chart                |
| NSN                 | National Stock Number                       |
| RPSTL               | Repair Parts and Special Tools List         |
| SMR                 | Source, Maintenance, and Recoverability     |
| TMDE                | Test, Measurement, and Diagnostic Equipment |
| UOC                 | Usable on Code                              |

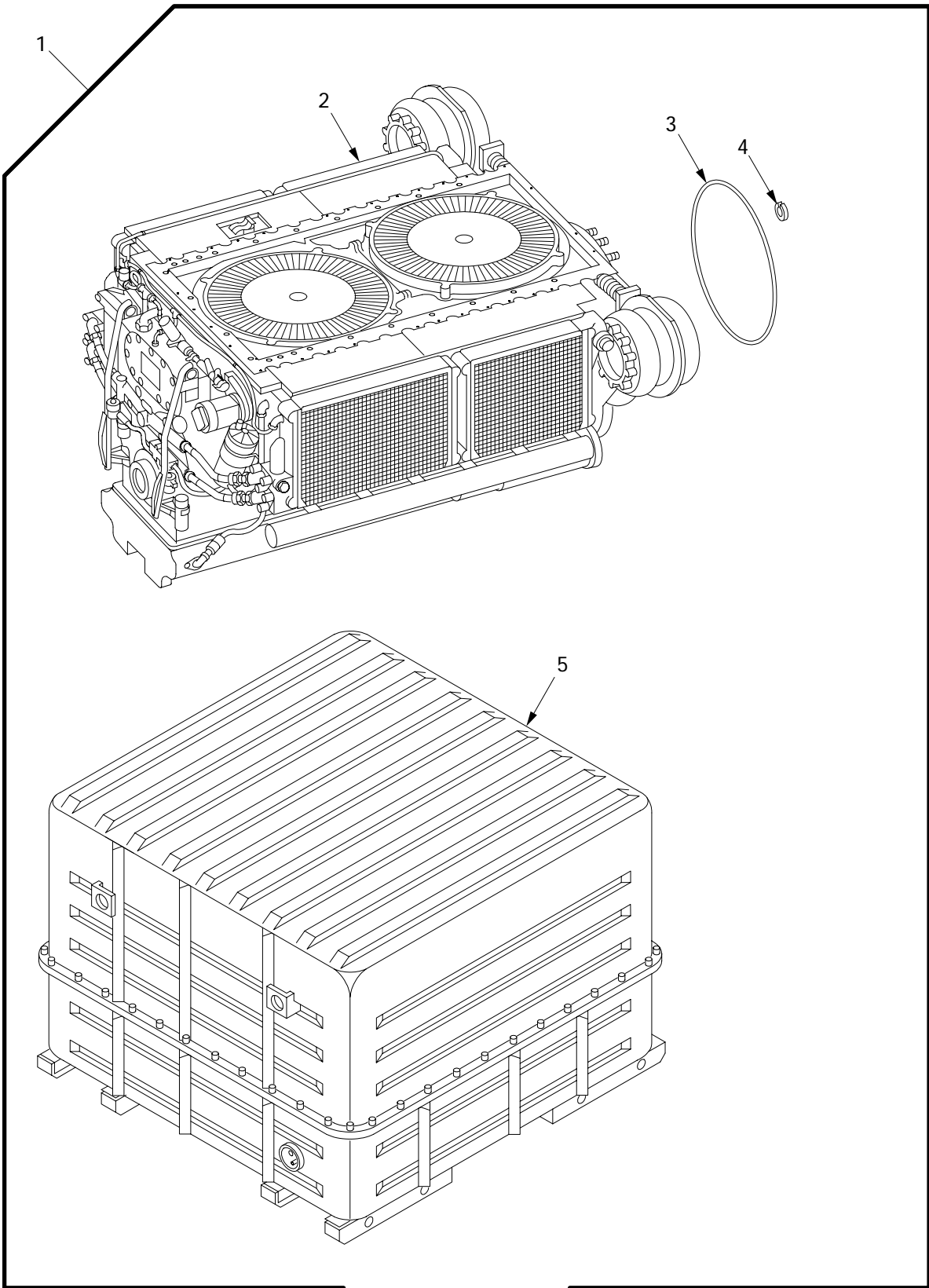
## COPYRIGHT CREDIT LINE

Copyright ©1998 by United Defense, L.P. All rights reserved under the copyright laws.

This material may be reproduced for U.S. Government purposes only, pursuant to the Copyright license under the clause at (DFARS 52.2227-7013) 1994.

## END OF WORK PACKAGE

## Engine Assembly with Container



01i007

Figure 1. Engine Assembly with Container



| (1)<br>ITEM<br>NO | (2)<br>SMR | (3)<br>NSN       | (4)<br>CAGE | (5)<br>PART<br>NUMBER | (6)<br>DESCRIPTION AND<br>USABLE ON CODE (UOC) | (7)<br>QTY |
|-------------------|------------|------------------|-------------|-----------------------|--|------------|
|                   |            |                  |             |                       | GROUP 01 ENGINE                                |            |
|                   |            |                  |             |                       | GROUP 0100 ENGINE ASSEMBLY                     |            |
|                   |            |                  |             |                       | FIGURE 1 ENGINE ASSEMBLY WITH<br>CONTAINER     |            |
| 1                 | PAFHD      | 2815-01-414-6821 | 06085       | 12366412              | ENGINE,DIESEL.....                             | 1          |
| 2                 | XAHFD      |                  | 06085       | 12364800              | .ENGINE.....                                   | 1          |
| 3                 | PAFZZ      | 5330-00-291-1720 | 19207       | 7359808               | .SEAL,NONMETALLIC RO.....                      | 1          |
| 4                 | PAOZZ      | 5310-00-584-5272 | 96906       | MS35338-48            | .WASHER,LOCK.....                              | 24         |
| 5                 | PAFDD      | 8145-00-856-8147 | 19207       | 10912269              | .SHIPPING AND STORAG.....                      | 1          |

END OF FIGURE

## **Engine Shroud Seals, Air In-take Elbow and Engine Mount Assembly**

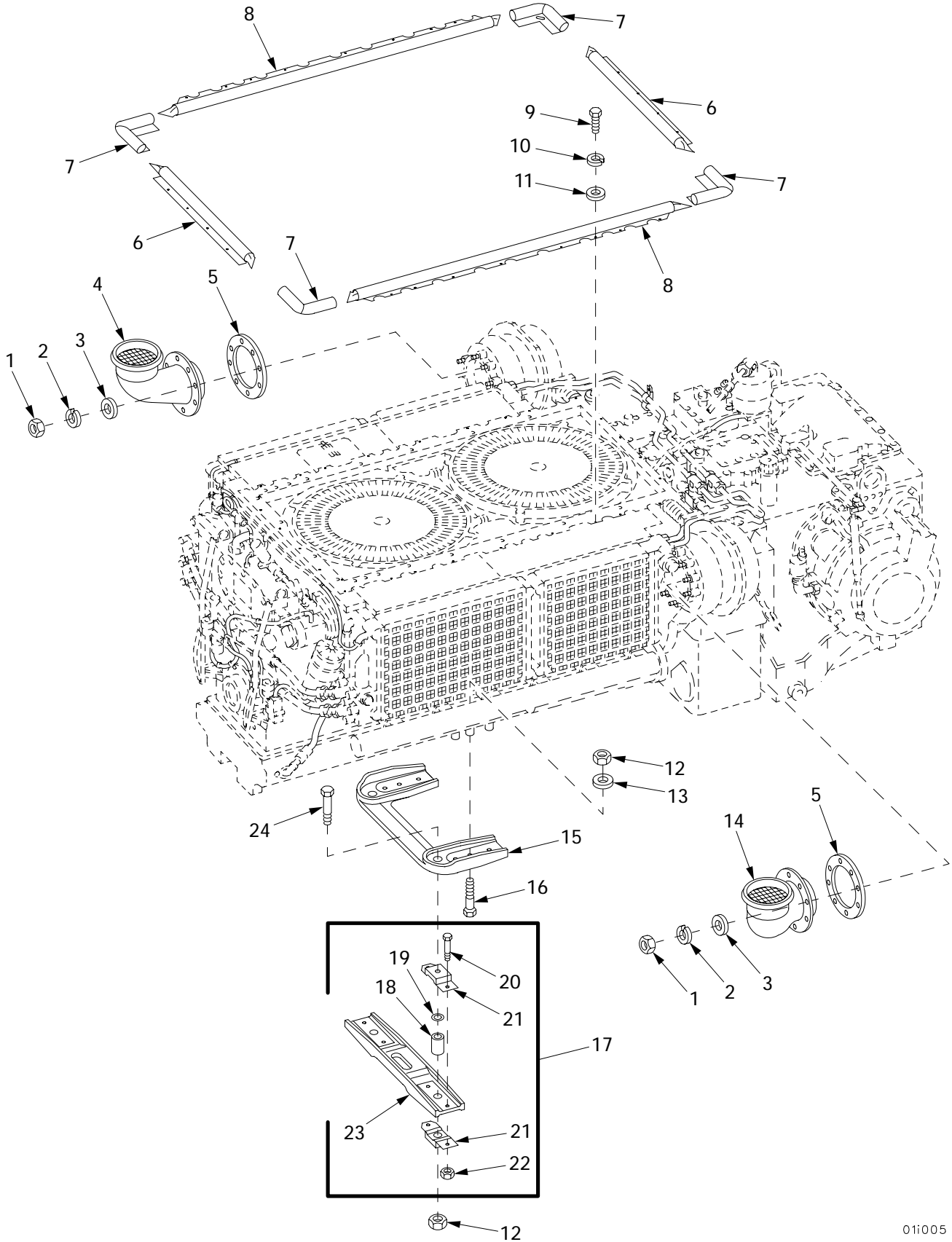


Figure 2. Engine Shroud Seals, Air In-take Elbow and Engine Mount Assembly

| (1)<br>ITEM<br>NO | (2)<br>SMR | (3)<br>NSN       | (4)<br>CAGE | (5)<br>PART<br>NUMBER     | (6)<br>DESCRIPTION AND<br>USABLE ON CODE (UOC)  | (7)<br>QTY |
|-------------------|------------|------------------|-------------|---------------------------|---|------------|
|                   |            |                  |             |                           | GROUP 0100 ENGINE ASSEMBLY<br>FIGURE 2 ENGINE SHROUD SEALS,<br>AIR IN-TAKE ELBOW AND<br>ENGINE MOUNT ASSEMBLY |            |
| 1                 | PAOZZ      | 5310-00-880-7746 | 96906       | MS51968-5                 | NUT, PLAIN, HEXAGON.....  | 16         |
| 2                 | PAOZZ      |                  | 80204       | W211NAA0031NN038<br>NNCG1 | WASHER, LOCK.....   | 16         |
| 3                 | PAOZZ      | 5310-00-081-4219 | 96906       | MS27183-12                | WASHER, FLAT.....   | 16         |
| 4                 | PAOZZ      | 4730-01-435-0964 | 06085       | 12365436                  | ELBOW ASSEMBLY, PIPE.....   | 1          |
| 5                 | PAOZZ      | 5330-00-678-3488 | 19207       | 8762780                   | GASKET.....   | 2          |
| 6                 | PAOZZ      | 5330-00-625-3345 | 19207       | 11671483                  | SEAL ASSEMBLY.....  | 2          |
| 7                 | PAOZZ      | 5640-00-102-9929 | 19207       | 10863508                  | INSULATION SLEEVING.....  | 4          |
| 8                 | PAOZZ      | 5330-00-622-7391 | 19207       | 11671978                  | SEAL, NONMETALLIC SP.....   | 2          |
| 9                 | PAOZZ      |                  | 80204       | S210NA38FAK16354<br>BNCG1 | SCREW.....  | 28         |
| 10                | PAOZZ      | 5310-00-637-9541 | 80204       | W211NAA0037NN038<br>NNCG1 | WASHER, LOCK.....   | 28         |
| 11                | PAOZZ      |                  | 80204       | W221NAAN037SN038<br>NNCG1 | WASHER, FLAT.....   | 28         |
| 12                | PAOZZ      | 5310-00-832-9719 | 96906       | MS51922-61                | NUT, SELF-LOCKING, HE.....  | 8          |
| 13                | PAOZZ      | 5310-00-809-8533 | 96906       | MS27183-23                | WASHER, FLAT.....   | 6          |
| 14                | PAOZZ      | 4730-01-429-6979 | 06085       | 12365435                  | ELBOW ASSEMBLY, PIPE.....   | 1          |
| 15                | PAOZZ      | 2815-00-621-1361 | 19207       | 11671085                  | ENGINE, MOUNT.....  | 1          |
| 16                | PAOZZ      | 5306-00-678-4262 | 19207       | 10863824                  | BOLT, MACHINE.....  | 6          |
| 17                | PAOOO      | 5342-00-808-5391 | 19207       | 8383247                   | MOUNT, RESILIENT.....   | 1          |
| 18                | PAOZZ      | 5365-00-625-3340 | 19207       | 7360492                   | .SPACER, SLEEVE.....  | 2          |
| 19                | PAOZZ      | 5365-00-545-1804 | 19207       | 7360488                   | .SHIM.....  | V          |
| 20                | PAOZZ      | 5305-00-269-3242 | 80204       | B1821BH038F200N           | .SCREW, CAP, HEXAGON H.....   | 4          |
| 21                | PAOZZ      | 2510-00-692-9216 | 19207       | 7360494                   | .MOUNTING, ASSEMBLY E.....  | 4          |
| 22                | PAOZZ      | 5310-00-225-6408 | 19207       | 12448584                  | .NUT, SELF-LOCKING, HE.....   | 4          |
| 23                | XAOZZ      |                  | 19207       | 7360495                   | .SADDLE.....  | 1          |
| 24                | PAOZZ      | 5305-00-928-9636 | 96906       | MS90727-199               | SCREW, CAP, HEXAGON H.....  | 2          |

END OF FIGURE