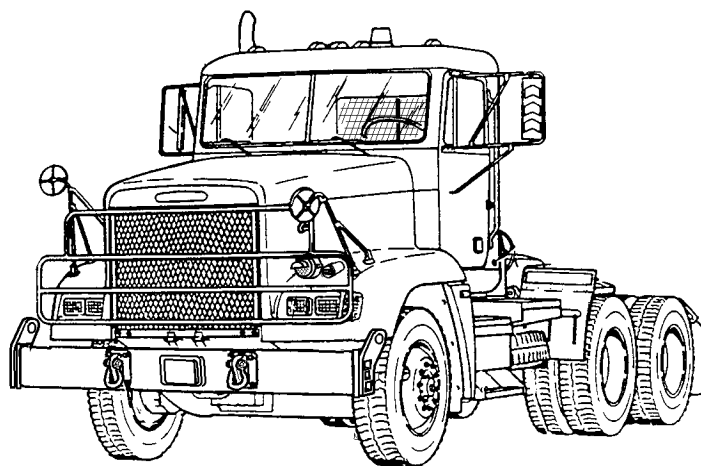


TM 9-2320-302-24P

**UNIT, DIRECT SUPPORT, AND GENERAL SUPPORT MAINTENANCE
REPAIR PARTS AND SPECIAL TOOLS LISTS (RPSTL)
(INCLUDING DEPOT MAINTENANCE REPAIR PARTS)**

FOR

**TRUCK, TRACTOR, LINE HAUL:
52,000 GVWR, 6 X 4, M915A3
(NSN 2320-01-432-4847)**



Approved for public release; distribution is unlimited.

HEADQUARTERS, DEPARTMENT OF THE ARMY

May 2001

UNIT, DIRECT SUPPORT, AND GENERAL SUPPORT MAINTENANCE
REPAIR PARTS AND SPECIAL TOOLS LISTS (RPSTL)
(INCLUDING DEPOT MAINTENANCE REPAIR PARTS)

FOR

TRUCK, TRACTOR, LINE HAUL:
52,000 GVWR, 6 X 4, M915A3
(NSN 2320-01-432-4847)

Current as of 14 November 2000
Approved for Public Release; Distribution is Unlimited

REPORTING ERRORS AND RECOMMENDING IMPROVEMENTS

You can help improve this publication. If you find any mistakes or if you know of a way to improve the procedures, please let us know. Submit your DA Form 2028 (*Recommended Changes to Equipment Technical Publications*), through the Internet, on the Army Electronic Product Support (AEPS) website. The Internet address is <http://aeprs.ria.army.mil>. If you need a password, scroll down and click on "ACCESS REQUEST FORM". The DA Form 2028 is located in the ONLINE FORMS PROCESSING section of the AEPS. Fill out the form and click on SUBMIT. Using this form on the AEPS will enable us to respond quicker to your comments and better manage the DA Form 2028 program. You may also mail, fax or e-mail your letter, DA Form 2028 direct to: AMSTA-LC-CI/TECH PUBS, TACOM-RI, 1 Rock Island Arsenal, Rock Island, IL 61299-7630. The e-mail address is: TACOM-TECH-PUBS@ria.army.mil. The fax number is DSN 793-0726 or Commercial (309) 782-0726.

TABLE OF CONTENTS

	Illus/ Fig	Page
Section I.		
Section II.		
Introduction		
Repair Parts List		
GROUP 01 ENGINE		
0100- ENGINE ASSEMBLY		1-1
DRESSED ENGINE AND CONTAINER	1	1-1
FRONT ENGINE SUPPORT	2	2-1
FRONT ENGINE MOUNTING	3	3-1
REAR ENGINE MOUNTING	4	4-1
ENGINE LIFTING BRACKETS	5	5-1
0101- CRANKCASE, BLOCK, CYLINDER HEAD		6-1
CYLINDER HEAD ASSEMBLY	6	6-1
CYLINDER BLOCK	7	7-1
0102- CRANKSHAFT		9-1
CRANKSHAFT ASSEMBLY	8	8-1

TABLE OF CONTENTS (Con't)

	Illus/ Fig	Page
0103- FLYWHEEL ASSEMBLY		9-1
FLYWHEEL HOUSING.....	9	9-1
0104- PISTONS AND CONNECTING RODS		10-1
ROD, PISTON AND PIN	10	10-1
0105- VALVES, CAMSHAFTS, AND TIMING SYSTEM		11-1
CAMSHAFT ASSEMBLY	11	11-1
INTAKE AND EXHAUST VALVES	12	12-1
ROCKER ARMS AND SHAFT ASSEMBLY	13	13-1
ROCKER COVER AND BREATHER TUBE	14	14-1
0106- ENGINE LUBRICATION SYSTEM.....		15-1
ENGINE OIL CHECK AND FILL TUBES.....	15	15-1
OIL PAN ASSEMBLY	16	16-1
ENGINE OIL FILTERS	17	17-1
OIL COOLER ASSEMBLY	18	18-1
OIL DISTRIBUTION SYSTEM	19	19-1
ENGINE OIL PUMP	20	20-1
OIL RELIEF AND REGULATOR VALVES	21	21-1
OIL PRESSURE GAGE HOSE AND ENGINE OIL SAMPLE VALVE	22	22-1
0108- MANIFOLDS		23-1
INTAKE AND EXHAUST MANIFOLDS	23	23-1
0109- ACCESSORY DRIVING MECHANISMS		24-1
BULL GEAR AND ADJUSTABLE IDLER GEAR	24	24-1
ACCESSORY DRIVE	25	25-1
0112- ENGINE BRAKE		26-1
ENGINE RETARDER ASSEMBLY	26	26-1
0125- ACCESSORY DRIVE ASSEMBLY		27-1
GEAR CASE AND FRONT COVER.....	27	27-1
GROUP 03 FUEL SYSTEM		
0301- CARBURETOR, FUEL INJECTOR		28-1
INJECTOR ASSEMBLY	28	28-1
0302- FUEL PUMPS		29-1
FUEL PUMPS	29	29-1
FUEL FILTER, HOSES, FITTINGS AND ADAPTERS	30	30-1
0304- AIR CLEANER.....		31-1
AIR CLEANER TUBING AND ATTACHING HARDWARE	31	31-1
AIR CLEANER ASSEMBLY	32	32-1
AIR CLEANER HOUSING ASSEMBLY	33	33-1
0305- SUPERCHARGER, BLOWER, TURBOCHARGER, OR ALTITUDE COMPENSATOR		34-1
TURBOCHARGERS.....	34	34-1
CHARGE AIR COOLER	35	35-1

TABLE OF CONTENTS (Con't)

	Illus/ Fig	Page
0306- TANKS, LINES, FITTINGS, HEADERS		36-1
FUEL TANK ASSEMBLY AND ATTACHING HARDWARE	36	36-1
FUEL LINES AND FITTINGS	37	37-1
FUEL FILTER ELEMENTS	38	38-1
0311- ENGINE STARTING AIDS		39-1
ETHER STARTING AID	39	39-1
0312- ACCELERATOR, THROTTLE, OR CHOKE CONTROLS		40-1
ELECTRONIC THROTTLE ASSEMBLY	40	40-1
GROUP 04 EXHAUST SYSTEM		
0401- MUFFLER AND PIPES		41-1
EXHAUST PIPES AND MOUNTING HARDWARE	41	41-1
MUFFLER MOUNTING HARDWARE	42	42-1
MUFFLER HEAT SHIELD	43	43-1
GROUP 05 COOLING SYSTEM		
0501- RADIATOR, EVAPORATIVE COOLER, OR HEAT EXCHANGER		44-1
RADIATOR MOUNTING HARDWARE	44	44-1
RADIATOR ASSEMBLY	45	45-1
0502- COWLING, DEFLECTORS, AIR DUCTS, SHROUDS, ETC.....		46-1
AIR RECIRCULATION SHIELD	46	46-1
FAN SHROUD	47	47-1
0503- WATER MANIFOLD, HEATERS, THERMOSTATS, AND HOUSING GASKET		48-1
FAN CLUTCH PLUMBING	48	48-1
RADIATOR PIPING	49	49-1
THERMOSTAT COVER AND THERMOSTAT	50	50-1
0504- WATER PUMP		51-1
WATER PUMP ASSEMBLY	51	51-1
0505 FAN ASSEMBLY		52-1
FAN IMPELLER	52	52-1
FAN MOUNTING SUPPORT	53	53-1
FAN CLUTCH ASSEMBLY	54	54-1
0508 WATER FILTER		55-1
WATER FILTER INSTALLATION	55	55-1
GROUP 06 ELECTRICAL SYSTEM		
0601- GENERATOR, ALTERNATOR		56-1
ALTERNATOR PULLEY, BELT AND ATTACHING HARDWARE	56	56-1
ALTERNATOR ASSEMBLY	57	57-1
0602- GENERATOR REGULATOR (VOLTAGE)		58-1
REGULATOR	58	58-1

TABLE OF CONTENTS (Con't)

	Illus/ Fig	Page
0603- STARTING MOTOR		59-1
STARTER AND ATTACHING PARTS	59	59-1
STARTER ASSEMBLY	60	60-1
STARTER RELAY (MAGNETIC SWITCH).....	61	61-1
0605- IGNITION COMPONENTS		62-1
ELECTRONIC CONTROL MODULE	62	62-1
ELECTRONIC CONTROL MODULE WIRING HARNESS.....	63	63-1
INJECTOR WIRING HARNESS	64	64-1
ENGINE WIRING HARNESS	65	65-1
ENGINE DDEC WIRING HARNESS	66	66-1
POWER DDEC WIRING HARNESS	67	67-1
0607- INSTRUMENT OR ENGINE CONTROL PANEL.....		68-1
INSTRUMENT PANEL SWITCHES	68	68-1
RIGHT DASH PANEL SWITCHES	69	69-1
CENTER DASH PANEL	70	70-1
LEFT AND CENTER DASH PANEL GAGES	71	71-1
ENGINE CHECK SWITCH AND CAB AIR JUNCTION BLOCK WIRING.....	72	72-1
TURN SIGNAL SWITCH	73	73-1
0608- MISCELLANEOUS ITEMS		74-1
FUSE, RELAY, AND CIRCUIT BREAKER PANEL	74	74-1
ABS ECU HARNESS FUSES, RELAYS AND CIRCUIT BREAKERS	75	75-1
ENGINE WIRING HARNESS MOUNTING HARDWARE	76	76-1
CHASSIS WIRING HARNESS MOUNTING HARDWARE	77	77-1
CAB TO FRAME GROUNDING WIRE	78	78-1
0609- LIGHTS.....		79-1
HEADLAMP AND TURN SIGNAL	79	79-1
TAILLIGHTS	80	80-1
BLACKOUT AND MARKER LIGHTS	81	81-1
CLEARANCE LIGHT, UTILITY LIGHT AND BEACON BRACKET	82	82-1
INTERIOR LIGHT AND UTILITY POWER.....	83	83-1
0610- SENDING UNITS AND WARNING SWITCHES.....		84-1
ELECTRONIC CONTROL MODULE SENSORS	84	84-1
CLUTCH TRANSMISSION SWITCH AND SPST SWITCH.....	85	85-1
RPM PULSE SENDER, FUEL PRESSURE SENDER, SWITCH AND OIL PRESSURE SWITCH	86	86-1
WATER LEVEL PROBE, MODULE AND A/C SWITCH.....	87	87-1
ABS SENSORS	88	88-1
SENSORS AND SENDING UNITS	89	89-1
0611- HORN, SIREN		90-1
ELECTRIC HORN	90	90-1
0612- BATTERIES, STORAGE (WET OR DRY).....		91-1
BATTERIES, BATTERY CABLES, EQUALIZER, AND CUTOFF SWITCH	91	91-1
BATTERY BOX ASSEMBLY	92	92-1

TABLE OF CONTENTS (Con't)

	Illus/ Fig	Page
0613- HULL OR CHASSIS WIRING HARNESS		93-1
MAIN CAB WIRING HARNESS	93	93-1
OVERHEAD CAB WIRING HARNESS	94	94-1
CAB FLOOR WIRING HARNESS	95	95-1
CHASSIS WIRING HARNESS	96	96-1
STOP/TAIL/BACKUP LIGHTS WIRING HARNESS	97	97-1
TURN SIGNAL/MARKER LIGHT WIRING HARNESS	98	98-1
TURN SIGNAL (THRU DECK) WIRING HARNESS	99	99-1
BLACKOUT LIGHTS WIRING HARNESS	100	100-1
HARNESS OVERLAY	101	101-1
TRAILER HOOKUP INSTALLATION	102	102-1
TRAILER HOOKUP CABLE AND RECEPTACLE CABLE	103	103-1
FRONT CHASSIS ABS WIRING HARNESS	104	104-1
REAR CHASSIS ABS WIRING HARNESS	105	105-1
ABS COVER AND MOUNTING PLATES	106	106-1
ABS ECU MOUNTING AND RELATED PARTS	107	107-1
ABS DIAGNOSTIC HARNESSSES	108	108-1
ABS TRAILER CAB FLOOR HARNESS	109	109-1
ECU/ABS WIRING HARNESS	110	110-1
ABS WARNING LAMP	111	111-1
ABS FLOOR HARNESS	112	112-1
ABS WIRING HARNESS HARDWARE	113	113-1
PERSONNEL HEATER WIRING HARNESS	114	114-1
TRANSMISSION ECU HARNESS	115	115-1
ABS OVERLAY HARNESS AND INTERFACE ASSEMBLY	116	116-1
TRANSMISSION POWER HARNESS	117	117-1
 GROUP 07 TRANSMISSION		
0705- TRANSMISSION SHIFTING COMPONENTS		118-1
TRANSMISSION SHIFT CONTROL	118	118-1
0710- TRANSMISSION ASSEMBLY AND ASSOCIATED PARTS		119-1
DRESSED TRANSMISSION AND CONTAINER	119	119-1
TRANSMISSION FILLER TUBE, REAR YOKE AND ATTACHING HARDWARE	120	120-1
TRANSMISSION MOUNTING HARDWARE	121	121-1
FLEXPLATE AND ADAPTER	122	122-1
TORQUE CONVERTER ASSEMBLY	123	123-1
TORQUE CONVERTER HOUSING COMPONENTS	124	124-1
FRONT SUPPORT AND OIL PUMP ASSEMBLY	125	125-1
MAIN SHAFT	126	126-1
MAIN HOUSING AND RELATED COMPONENTS	127	127-1
REAR COVER AND COMPONENT PARTS	128	128-1
0713- INTERMEDIATE CLUTCH		129-1
ROTATING CLUTCH ASSEMBLY	129	129-1
C3/C4 CLUTCH ASSEMBLY	130	130-1
P1 PLANETARY ASSEMBLY	131	131-1
P2 PLANETARY ASSEMBLY	132	132-1
P3 PLANETARY ASSEMBLY	133	133-1
CONTROL VALVES AND WIRING HARNESS	134	134-1
TRANSMISSION OIL COOLER, LINES AND FITTINGS	135	135-1

TABLE OF CONTENTS (Con't)

	Illus/ Fig	Page
GROUP 09 PROPELLER, PROPELLER SHAFTS, UNIVERSAL JOINTS, COUPLER, AND CLAMP ASSEMBLY		
0900- PROPELLER SHAFTS		136-1
MAIN PROPELLER SHAFT ASSEMBLY	136	136-1
INTER-AXLE PROPELLER SHAFT ASSEMBLY	137	137-1
GROUP 10 FRONT AXLE		
1000- FRONT AXLE ASSEMBLY		138-1
FRONT AXLE ASSEMBLY	138	138-1
1004- STEERING AND LEANING WHEEL MECHANISM		139-1
TIE ROD KNUCKLES	139	139-1
GROUP 11 REAR AXLE		
1100- REAR AXLE ASSEMBLY		140-1
FORWARD-REAR AXLE DRESSED	140	140-1
REAR-REAR AXLE DRESSED	141	141-1
1102- DIFFERENTIAL		142-1
FORWARD-REAR AXLE DIFFERENTIAL CARRIER ASSEMBLY	142	142-1
FORWARD-REAR AXLE OUTPUT SHAFT ASSEMBLY	143	143-1
REAR-REAR AXLE DIFFERENTIAL CARRIER ASSEMBLY	144	144-1
GROUP 12 BRAKES		
1202- SERVICE BRAKES		145-1
HANGING BRAKE ASSEMBLY	145	145-1
FRONT BRAKE ASSEMBLY	146	146-1
REAR BRAKE ASSEMBLY	147	147-1
FRONT BRAKE CHAMBER	148	148-1
1208- AIRBRAKE SYSTEM		149-1
REAR BRAKE CHAMBER	149	149-1
AIR SYSTEM VALVES, TANKS, LINES AND FITTINGS, PART 1	150	150-1
AIR SYSTEM VALVES, TANKS, LINES AND FITTINGS, PART 2	151	151-1
AIR SYSTEM VALVES, TANKS, LINES AND FITTINGS, PART 3	152	152-1
AIR SYSTEM VALVES, TANKS, LINES AND FITTINGS, PART 4	153	153-1
AIR SYSTEM VALVES, TANKS, LINES AND FITTINGS, PART 5	154	154-1
AIR SYSTEM VALVES, TANKS, LINES AND FITTINGS, PART 6	155	155-1
AIR SYSTEM VALVES, TANKS, LINES AND FITTINGS, PART 7	156	156-1
AIR SYSTEM VALVES, TANKS, LINES AND FITTINGS, PART 8	157	157-1
AIR SYSTEM VALVES, TANKS, LINES AND FITTINGS, PART 9	158	158-1
AIR SYSTEM VALVES, TANKS, LINES AND FITTINGS, PART 10	159	159-1
AIR DRYER ASSEMBLY	160	160-1
1209- TRAILER BRAKE CONNECTIONS AND CONTROLS		161-1
AIR COMPRESSOR LINES AND FITTINGS	161	161-1
AIR COMPRESSOR ASSEMBLY	162	162-1
AIR COMPRESSOR GOVERNOR AND DISCHARGE	163	163-1

TABLE OF CONTENTS (Con't)

	Illus/ Fig	Page
GROUP 13 WHEELS AND TRACKS		
1311- WHEEL ASSEMBLY		164-1
FRONT AXLE HUB ASSEMBLY	164	164-1
REAR AXLE HUB ASSEMBLY	165	165-1
WHEEL ASSEMBLY	166	166-1
1313- TIRES, TUBES, TIRE CHAINS		167-1
TIRES	167	167-1
GROUP 14 STEERING		
1401- MECHANICAL STEERING GEAR ASSEMBLY		168-1
STEERING COLUMN	168	168-1
UNIVERSAL SHAFT AND STEERING BOOT	169	169-1
STEERING LINKAGE	170	170-1
STEERING GEAR MOUNTING HARDWARE	171	171-1
STEERING GEAR ASSEMBLY	172	172-1
1410- HYDRAULIC PUMP OR FLUID MOTOR ASSEMBLY		173-1
HYDRAULIC STEERING PUMP	173	173-1
1411- HOSES, LINES, FITTINGS		174-1
STEERING LINES AND FITTINGS	174	174-1
1413- TANKS, RESERVOIRS		175-1
RESERVOIR ASSEMBLY AND BRACKET	175	175-1
GROUP 15 FRAME, TOWING ATTACHMENTS, DRAWBARS, AND ARTICULATION SYSTEMS		
1501- FRAME ASSEMBLY		176-1
FORWARD FRAME ASSEMBLY	176	176-1
OVERSLUNG CROSSMEMBER AND FRONT ENGINE MOUNTING	177	177-1
CAB ALLIGATOR CROSSMEMBER	178	178-1
TREADPLATE, L/S PLATFORM, MIDSHIPS AND ALLIGATOR CROSSMEMBER	179	179-1
REAR SUSPENSION CROSSMEMBER	180	180-1
REAR CROSSMEMBER AND TIE DOWN	181	181-1
FRONT MUDFLAPS	182	182-1
REAR MUDFLAPS	183	183-1
RAMP INSTALLATION	184	184-1
1503- PINTLES AND TOWING ATTACHMENTS		185-1
FRONT BUMPER, TOW BRACKET AND SLING BRACKET	185	185-1
PINTLE HOOK, REAR	186	186-1
1504- SPARE WHEEL CARRIER AND TIRE LOCK		187-1
SPARE TIRE CARRIER	187	187-1
1506- FIFTH WHEEL		188-1
FIFTH WHEEL ASSEMBLY	188	188-1
FIFTH WHEEL COMPONENTS	189	189-1
WHEEL PLATE ASSEMBLY	190	190-1
SLIDER BRACKET AND PLATE	191	191-1

TABLE OF CONTENTS (Con't)

	Illus/ Fig	Page
GROUP 16 SPRINGS AND SHOCK ABSORBERS		
1601- SPRINGS		192-1
FRONT SPRINGS	192	192-1
REAR SPRING ASSEMBLY	193	193-1
1604- SHOCK ABSORBER EQUIPMENT		194-1
FRONT SHOCK ABSORBER	194	194-1
REAR SHOCK ABSORBER	195	195-1
1605- TORQUE, RADIUS, AND STABILIZER RODS		196-1
REAR SUSPENSION TORQUE RODS AND ATTACHING HARDWARE	196	196-1
GROUP 18 BODY, CAB, HOOD, AND HULL		
1801- BODY, CAB, HOOD, AND HULL ASSEMBLIES		197-1
CAB MOUNTING HARDWARE	197	197-1
CAB FRAME COMPONENTS	198	198-1
CAB COMPONENTS	199	199-1
CAB INTERIOR TRIM COMPONENTS	200	200-1
DASHBOARD ASSEMBLY	201	201-1
CAB OVERHEAD STORAGE COMPONENTS	202	202-1
DOOR ASSEMBLY	203	203-1
EXTERIOR GRAB HANDLES	204	204-1
LATCH AND HOOD MOUNT	205	205-1
HOOD ASSEMBLY	206	206-1
HOOD LINER, INSULATION	207	207-1
TILT ASSIST AND HINGES	208	208-1
BRUSH GUARD	209	209-1
1802- FENDERS, RUNNING BOARDS WITH MOUNTING AND ATTACHING PARTS, OUTRIGGERS, WINDSHIELD, GLASS, ETC.		210-1
STEP ASSEMBLY R/S	210	210-1
LEFT STEP ASSEMBLY	211	211-1
FRONT QUARTERFENDER INSTALLATION	212	212-1
REAR QUARTERFENDER INSTALLATION	213	213-1
WINDSHIELD AND WINDOWS	214	214-1
1805- FLOORS, SUBFLOORS, AND RELATED COMPONENTS		215-1
FLOOR COVERING	215	215-1
1806- UPHOLSTERY, SEATS, AND CARPETS		216-1
INTERIOR CAB PANELS	216	216-1
SEAT MOUNTING BRACKET	217	217-1
SEAT MOUNTING HARDWARE AND SEATBELTS	218	218-1
SEAT ASSEMBLY	219	219-1
SEAT BASE ASSEMBLY	220	220-1
1808- STOWAGE RACKS, BOXES, STRAPS, CARRYING CASES, CABLE REELS, HOSE REELS, ETC.		221-1
PERSONNEL AND TIRE CHAIN BOXES	221	221-1
TRACTOR EQUIPMENT BOX	222	222-1
JACK HOLDDOWN COMPONENTS	223	223-1
FIRE EXTINGUISHER BRACKET	224	224-1

TABLE OF CONTENTS (Con't)

	Illus/ Fig	Page
GROUP 22 BODY, CHASSIS, AND HULL ACCESSORY ITEMS		
2202- ACCESSORY ITEMS		225-1
WINDSHIELD WIPERS, MOTOR AND WASHER BOTTLE	225	225-1
AIR HORN ASSEMBLY AND MOUNTING HARDWARE	226	226-1
REAR VIEW MIRROR AND ATTACHING HARDWARE	227	227-1
REAR VIEW MIRROR (SPOTTER) AND LOOKDOWN MIRROR	228	228-1
RADIO ANTENNA MOUNTING.....	229	229-1
VEHICLE HEATER DUCT ASSEMBLY	230	230-1
HEATER/AC CONTROL ASSEMBLY	231	231-1
VEHICLE HEATER AIR INTAKE	232	232-1
HEATER/AC ASSEMBLY	233	233-1
HEATER HOSES.....	234	234-1
2210- DATA PLATES AND INSTRUCTION HOLDERS		235-1
DATA PLATES	235	235-1
DATA PLATES	236	236-1
FAN DECALS	237	237-1
GROUP 33 SPECIAL PURPOSE KITS		
3301- REUSABLE SHIPPING CONTAINERS		238-1
ENGINE CONTAINER	238	238-1
TRANSMISSION CONTAINER	239	239-1
PERSONNEL ARCTIC HEATER LINES, FITTINGS AND HARDWARE	240	240-1
ARCTIC HEATER ASSEMBLY	241	241-1
PERSONNEL AUXILIARY HEATER AND COMPONENTS	242	242-1
3307- SPECIAL PURPOSE KITS		243-1
AIR DEFLECTOR KIT	243	243-1
GROUP 34 ARMAMENT AND SIGHTING AND FIRE CONTROL MATERIEL		
3401- PRIMARY ARMAMANT		244-1
RIFLE MOUNTING KIT	244	244-1
GROUP 42 ELECTRICAL EQUIPMENT		
4209- SIGNALING DEVICES		245-1
BEACON WARNING LIGHT KIT	245	245-1
GROUP 47 GAGES (NONELECTRICAL), WEIGHING AND MEASURING DEVICES		
4702- GAGES, MOUNTINGS, LINES, AND FITTINGS.....		246-1
AIR PRESSURE GAGES AND AIR RESTRICTION GAGE.....	246	246-1
GROUP 52 REFRIGERATION, AIR CONDITIONER/HEATER, AND AIR CONDITIONING COMPONENTS		
5200- AIR CONDITIONER/HEATER ASSEMBLY AND GAS COMPRESSOR ASSEMBLY		247-1
A/C COMPRESSOR AND MOUNTING HARDWARE	247	247-1
5203- COMPRESSOR DRIVE, PEDESTAL, BASE		248-1
CLUTCH ASSEMBLY, A/C COMPRESSOR	248	248-1
5217- REFRIGERANT PIPING		249-1
A/C HOSES AND BRACKETS	249	249-1

TABLE OF CONTENTS (Con't)

	Illus/ Fig	Page
5230- CONDENSER.....		250-1
A/C CONDENSER AND REC/DRYER.....	250	250-1
GROUP 68 WARNING, SCANNING, AND SIGNALING DEVICES, AND NAVIGATIONAL INSTRUMENTS		
6806- RADAR SYSTEM		251-1
VORAD EXTERNAL COMPONENTS	251	251-1
VORAD CAB WIRING	252	252-1
VORAD INTERNAL CAB COMPONENTS.....	253	253-1
VORAD CHASSIS HARNESS COMPONENTS.....	254	254-1
VORAD CAB HARNESS COMPONENTS.....	255	255-1
GROUP 91 CHEMICAL, BIOLOGICAL, AND RADIOLOGICAL (CBR) EQUIPMENT		
9120- DECONTAMINATION EQUIPMENT		256-1
M13 DECONTAMINATION MOUNTING KIT	256	256-1
GROUP 94 REPAIR KITS EQUIPMENT		
9401- REPAIR KITS		KITS-1
KITS.....	KITS	KITS-1
GROUP 95 GENERAL USE STANDARDIZED PARTS		
9501- HARDWARE SUPPLIES AND BULK MATERIEL, COMMON.....		BULK-1
BULK	BULK	BULK-1
 Section III. Special Tools List		
GROUP 26 TOOLS AND TEST EQUIPMENT		
2604- SPECIAL TOOLS		257-1
UNIT SPECIAL TOOLS	257	257-1
UNIT SPECIAL TOOLS	258	258-1
UNIT SPECIAL TOOLS	259	259-1
DIRECT SUPPORT SPECIAL TOOLS.....	260	260-1
DIRECT SUPPORT SPECIAL TOOLS.....	261	261-1
DIRECT SUPPORT SPECIAL TOOLS.....	262	262-1
DIRECT SUPPORT SPECIAL TOOLS.....	263	263-1
DIRECT SUPPORT SPECIAL TOOLS.....	264	264-1
DIRECT SUPPORT SPECIAL TOOLS.....	265	265-1
GENERAL SUPPORT SPECIAL TOOLS.....	266	266-1
GENERAL SUPPORT SPECIAL TOOLS.....	267	267-1
GENERAL SUPPORT SPECIAL TOOLS.....	268	268-1
GENERAL SUPPORT SPECIAL TOOLS.....	269	269-1
GENERAL SUPPORT SPECIAL TOOLS.....	270	270-1
GENERAL SUPPORT SPECIAL TOOLS.....	271	271-1
 Section IV. Cross-Reference Indexes		
NATIONAL STOCK NUMBER INDEX.....		I-1
PART NUMBER INDEX.....		I-38

UNIT, DIRECT SUPPORT, AND GENERAL SUPPORT MAINTENANCE REPAIR PARTS AND SPECIAL TOOLS LISTS (RPSTL) (INCLUDING DEPOT MAINTENANCE REPAIR PARTS) - INTRODUCTION

0001 00

SCOPE

This RPSTL lists and authorizes spares and repair parts; special tools; special test, measurement, and diagnostic equipment (TMDE); and other special support equipment required for performance of Unit, Direct Support and General Support maintenance of the M915A3. It authorizes the requisitioning, issue, and disposition of spares, repair parts, and special tools as indicated by the source, maintenance, and recoverability (SMR) codes.

GENERAL

In addition to the Introduction work package, this RPSTL is divided into the following work packages:

- a. **Repair Parts List Work Packages.** Work packages containing lists of spares and repair parts authorized by this RPSTL for use in the performance of maintenance. These work packages also include parts which must be removed for replacement of the authorized parts. Parts lists are composed of functional groups in ascending alphanumeric sequence, with the parts in each group listed in ascending figure and item number sequence. Sending units, brackets, filters, and bolts are listed with the component they mount on. Bulk materials are listed by item name in FIG. BULK at the end of the work packages. Repair parts kits are listed separately in their own functional group and work package. Repair parts for repairable special tools are also listed in a separate work package. Items listed are shown on the associated illustrations.
- b. **Special Tools List Work Packages.** Work packages containing lists of special tools, special TMDE, and special support equipment authorized by this RPSTL [as indicated by Basis of Issue (BOI) information in the DESCRIPTION AND USABLE ON CODE (UOC) column]. Tools that are components of common tool sets and/or Class VII are listed.
- c. **Cross-Reference Indexes Work Packages.** There are two cross-reference indexes work packages in this RPSTL: WP 0004 00 National Stock Number Index and WP 0005 00 Part Number Index.

EXPLANATION OF COLUMNS IN THE REPAIR PARTS LIST AND SPECIAL TOOLS LIST WORK PACKAGES

- a. **Item No. (Column 1).** Indicates the number used to identify items called out in the illustration.
- b. **SMR Code (Column 2).** The SMR code containing supply/requisitioning information, maintenance level authorization criteria, and disposition instruction, as shown in the following breakout:

SOURCE CODE	MAINTENANCE CODE		RECOVERABILITY CODE
XXxxx	xxXXx		xxxxX
1st two positions	3rd position	4th position	5th position
How you get an item.	Who can install, replace or use the item.	Who can do complete repair* on the item.	Who determines disposition action on an unserviceable item.

* *Complete Repair:* Maintenance capacity, capability, and authority to perform all corrective maintenance tasks of the "Repair" function in a use/user environment in order to restore serviceability to a failed item.

UNIT, DIRECT SUPPORT, AND GENERAL SUPPORT MAINTENANCE REPAIR PARTS AND SPECIAL TOOLS LISTS (RPSTL) (INCLUDING DEPOT MAINTENANCE REPAIR PARTS) INTRODUCTION - CONTINUED

0001 00

EXPLANATION OF COLUMNS IN THE REPAIR PARTS LIST AND SPECIAL TOOLS LIST WORK PACKAGES - CONTINUED

- (1) **Source Code.** The source code tells you how to get an item needed for maintenance, repair, or overhaul of an end item/equipment. Explanations of source codes follow:

<u>Code</u>	<u>Application/Explanation</u>
PA PB PC PD PE PF PG	<p>Stocked items; use the applicable NSN to request/requisition items with these source codes. They are authorized to the maintenance category indicated by the code entered in the third position of the SMR code.</p> <p style="text-align: center;"><i>Items coded PC are subject to deterioration.</i></p> <p>.....</p>
KD KF KB	<p>Items with these codes are not to be requested/requisitioned individually. They are part of a kit which is authorized to the maintenance level indicated in the third position of the SMR code. The complete kit must be requisitioned and applied.</p> <p>.....</p>
MO - Made at unit/AVUM Level MF - Made at DS/AVIM Level MH - Made at GS Level ML - Made at SRA MD - Made at Depot	<p>Items with these codes are not to be requested/requisitioned individually. They must be made from bulk materiel which is identified by the part number in the DESCRIPTION AND USABLE ON CODE (UOC) column and listed in the bulk materiel group work package of the RPSTL. If the item is authorized to you by the third position of the SMR code, but the source code indicates it is made at a higher level, order the item from the higher level of maintenance.</p> <p>.....</p>
AO-Assembled by unit/ AVUM level AF-Assembled by DS/ AVIM level AH-Assembled by GS level AL-Assembled by SRA AD-Assembled by Depot	<p>Items with these codes are not to be requested/requisitioned individually. The parts that make up the assembled item must be requisitioned or fabricated and assembled at the level of maintenance indicated by the source code. If the third position of the SMR code authorizes you to replace the item, but the source code indicates the item is assembled at a higher level, order the item from the higher level of maintenance.</p>
XA	Do not requisition an "XA" coded item. Order the next higher assembly. (Refer to NOTE below).
XB	If an item is not available from salvage, order it using the CAGEC and P/N.
XC	Installation drawings, diagrams, instruction sheets, field service drawings; identified by manufacturer's P/N.
XD	Item is not stocked. Order an SD-coded item through normal supply channels using the CAGEC and P/N given, if no NSN is available.

NOTE

Cannibalization of controlled exchange, when authorized, may be used as a source of supply for items with the above source codes, except for those source coded "XA" or those aircraft support items restricted by requirements of AR 750-1.

UNIT, DIRECT SUPPORT, AND GENERAL SUPPORT MAINTENANCE REPAIR PARTS AND SPECIAL TOOLS LISTS (RPSTL) (INCLUDING DEPOT MAINTENANCE REPAIR PARTS) INTRODUCTION - CONTINUED

0001 00

EXPLANATION OF COLUMNS IN THE REPAIR PARTS LIST AND SPECIAL TOOLS LIST WORK PACKAGES - CONTINUED

- (2) **Maintenance Code.** Maintenance codes tell you the level(s) of maintenance authorized to use and repair support items. The maintenance codes are entered in the third and fourth positions of the SMR code as follows:
 - (a) Third Position. The maintenance code entered in the third position tells you the lowest maintenance level authorized to remove, replace, and use an item. The maintenance code entered in the third position will indicate authorization to one of the following levels of maintenance:

<u>Code</u>	<u>Application/Explanation</u>
C.	Crew or Operator maintenance done within Unit/AVUM maintenance.
O	Unit Level/AVUM maintenance can remove, replace, and use the item.
F.	Direct Support/AVIM maintenance can remove, replace, and use the item.
H	General Support maintenance can remove, replace, and use the item.
L	Specialized Repair Activity (SRA) can remove, replace, and use the item.
D	Depot Maintenance can remove, replace, and use the item.

- (b) Fourth Position. The maintenance code entered in the fourth position tells you whether or not the item is to be repaired and identifies the lowest maintenance level with the capability to do complete repair (perform all authorized repair functions).

NOTE

Some limited repair may be done on the item at a lower level of maintenance, if authorized by the Maintenance Allocation Chart (MAC) and SMR codes.

<u>Code</u>	<u>Application/Explanation</u>
O	Unit/AVUM is the lowest level that can do complete repair of the item.
F.	Direct Support/AVIM is the lowest level that can do complete repair of the item.
H	General Support is the lowest level that can do complete repair of the item.
L.	Specialized Repair Activity (SRA) is the lowest level that can do complete repair of the item.
D	Depot is the lowest level that can do complete repair of the item.
Z.	Nonreparable. No repair is authorized.
B.	No repair is authorized. No parts or special tools are authorized for the maintenance of a "B"-coded item. However, the item may be reconditioned by adjusting, lubricating, etc., at the user level.

UNIT, DIRECT SUPPORT, AND GENERAL SUPPORT MAINTENANCE REPAIR PARTS AND SPECIAL TOOLS LISTS (RPSTL) (INCLUDING DEPOT MAINTENANCE REPAIR PARTS) INTRODUCTION - CONTINUED

0001 00

EXPLANATION OF COLUMNS IN THE REPAIR PARTS LIST AND SPECIAL TOOLS LIST WORK PACKAGES - CONTINUED

- (3) **Recoverability Code.** Recoverability codes are assigned to items to indicate the disposition action on unserviceable items. The recoverability code is entered in the fifth position of the SMR code as follows:

<u>Code</u>	<u>Application/Explanation</u>
Z.	Nonreparable item. When unserviceable, condemn and dispose of the item at the level of maintenance shown in the third position of the SMR code.
O	Reparable item. When uneconomically repairable, condemn and dispose of the item at the unit level maintenance.
F.	Reparable item. When uneconomically repairable, condemn and dispose of the item at Direct Support level.
H	Reparable item. When uneconomically repairable, condemn and dispose of the item at General Support level.
D	Reparable item. When beyond lower level repair capability, return to depot. Condemnation and disposal of item are not authorized below depot level.
L.	Reparable item. Condemnation and disposal of item not authorized below Specialized Repair Activity (SRA).
A	Item requires special handling or condemnation procedures because of specific reasons (e.g., precious metal content, high dollar value, critical material, or hazardous material). Refer to appropriate manuals/directives for specific instructions.

- c. **NSN - (Column 3).** The NSN for the item is listed in this column.
- d. **CAGEC (Column 4).** The Commercial and Government Entity Code (CAGEC) is a five-digit code which is used to identify the manufacturer, distributor, or Government agency/activity that supplies the item.
- e. **PART NUMBER (Column 5).** Indicates the primary number used by the manufacturer (individual, company, firm, corporation, or Government activity), which controls the design and characteristics of the item by means of its engineering drawings, specifications, standards, and inspection requirements to identify an item or range of items.

NOTE

When you use an NSN to requisition an item, the item you receive may have a different part number from the part ordered.

- f. **DESCRIPTION AND USABLE ON CODE (UOC) (Column 6).** This column includes the following information:
 - (1) The Federal item name and, when required, a minimum description to identify the item.
 - (2) P/Ns of bulk materials are referenced in this column in the line entry to be manufactured or fabricated.
 - (3) Hardness Critical Item (HCI). A support item that provides the equipment with special protection from electromagnetic pulse (EMP) damage during a nuclear attack.
 - (4) The statement END OF FIGURE appears just below the last item description in column (6) for a given figure in both the repair parts list and special tools list work packages.

UNIT, DIRECT SUPPORT, AND GENERAL SUPPORT MAINTENANCE REPAIR PARTS AND SPECIAL TOOLS LISTS (RPSTL) (INCLUDING DEPOT MAINTENANCE REPAIR PARTS) INTRODUCTION - CONTINUED

0001 00

EXPLANATION OF COLUMNS IN THE REPAIR PARTS LIST AND SPECIAL TOOLS LIST WORK PACKAGES - CONTINUED

- g. **QTY (Column 7).** The QTY (quantity per figure) column indicates the quantity of the item used in the breakout shown on the illustration/figure, which is prepared for a functional group, subfunctional group, group or an assembly. A "V" appearing in this column in lieu of a quantity indicates that the quantity is variable and the quantity may vary from application to application.

EXPLANATION OF CROSS-REFERENCE INDEXES WORK PACKAGES FORMAT AND COLUMNS

- a. **National Stock Number (NSN) Index Work Package.**
 - (1) **STOCK NUMBER Column.** This column lists the NSN by National Item Identification Number (NIIN) sequence. The NIIN consists of the last nine digits of the NSN (i.e., NSN 5305-01-674-1467). When using this column to locate an item, ignore the first four digits of the NSN. However, the complete NSN should be used when ordering items by stock number.
 - (2) **FIG. Column.** This column lists the number of the figure where the item is identified/located. The figures are in numerical order in Section II and Section III.
 - (3) **ITEM Column.** The item number identifies the item associated with the figure listed in the adjacent FIG. column. This item is also identified by the NSN listed on the same line.
- b. **Part Number (P/N) Index Work Package.** Part numbers in this index are listed in ascending alphanumeric sequence (i.e., vertical arrangement of letter and number combination which places the first letter or digit of each group in order A through Z, followed by the numbers 0 through 9 and each following letter or digit in like order).
 - (1) **PART NUMBER Column.** Indicates the P/N assigned to the item.
 - (2) **FIG. Column.** This column lists the number of the figure where the item is identified/located in the repair parts list and special tools list work packages.
 - (3) **ITEM Column.** The item number is the number assigned to the item as it appears in the figure referenced in the adjacent figure number column.

SPECIAL INFORMATION

- a. **Usable On Code (UOC).** The UOC appears in the lower left corner of the DESCRIPTION column heading. Usable on codes are shown as "UOC:" in the Description Column (justified left) on the first line under the applicable item/nomenclature. Uncoded items are applicable to all models. Identification of the UOC's used in the RPSTL are:

<u>Code</u>	<u>Used On</u>
5A3	Model M915A3

- b. **Fabrication Instructions.** Bulk materials required to manufacture items are listed in the Bulk Materiel functional group of this RPSTL. Part numbers for bulk materiel are also referenced in the Description Column of the line item entry for the item to be manufactured/fabricated. Detailed fabrication instructions for items source coded to be manufactured or fabricated are found in TM 9-2320-302-20.
- c. **Index Numbers.** Items which have the word BULK in the figure column will have an index number shown in the item number column. This index number is a cross-reference between the NSN/P/N Index work package and the bulk materiel list in the repair parts list work package.

UNIT, DIRECT SUPPORT, AND GENERAL SUPPORT MAINTENANCE REPAIR PARTS AND SPECIAL TOOLS LISTS (RPSTL) (INCLUDING DEPOT MAINTENANCE REPAIR PARTS) INTRODUCTION - CONTINUED

0001 00

SPECIAL INFORMATION - CONTINUED

- d. **Associated Publications.** The publication(s) listed below pertain to the M915A3 and their components:

Publication	Short Title
TM 9-2320-302-10	Operator's Manual for M915A3
TM 9-2320-302-20	Unit Maintenance Manual for M915A3
TM 9-2320-302-34	Direct Support and General Support Maintenance Manual for M915A3

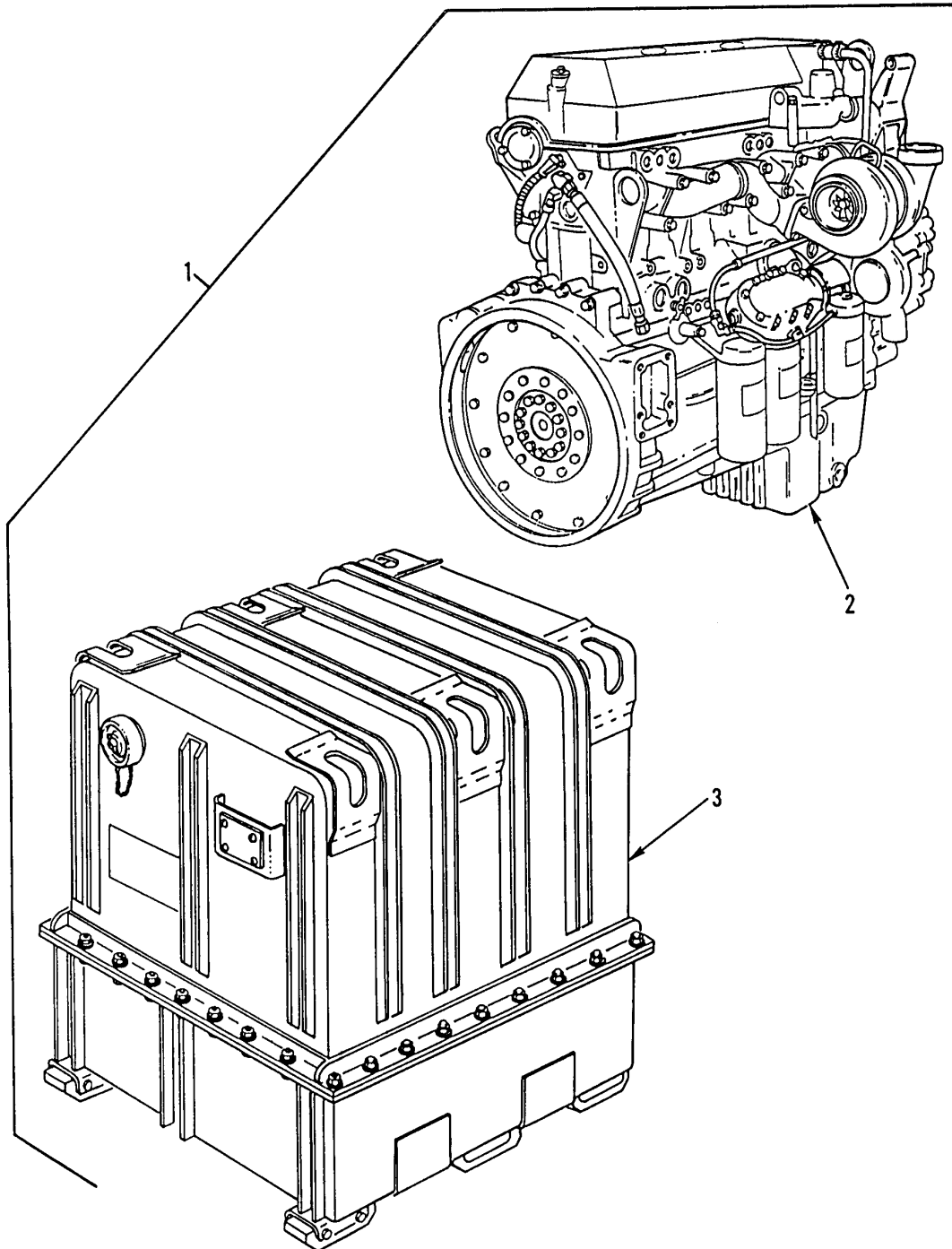
HOW TO LOCATE REPAIR PARTS

- a. **When National Stock Numbers or Part Numbers are Not Known:**
 - (1) **First.** Using the Table of Contents, determine the assembly group to which the item belongs. This is necessary since figures are prepared for assembly groups and subassembly groups, and listings are divided into the same groups.
 - (2) **Second.** Find the figure covering the assembly group or subassembly group to which the item belongs.
 - (3) **Third.** Identify the item on the figure and note the number(s).
 - (4) **Fourth.** Look in the repair parts list work packages for the figure and item numbers. The NSNs and part numbers are on the same line as the associated item numbers.
- b. **When National Stock Number is Known:**
 - (1) **First.** If you have the NSN, look in the STOCK NUMBER column of the NSN index work package. The NSN is arranged in NIIN sequence. Note the figure and item number next to the NSN.
 - (2) **Second.** Turn to the figure and locate the item number. Verify that the item is the one you are looking for.
- c. **When Part Number is Known.**
 - (1) **First.** If you have the P/N and not the NSN, look in the PART NUMBER column of the P/N index work package. Identify the figure and item number.
 - (2) **Second.** Look up the item on the figure in the applicable repair parts list work package.

ABBREVIATIONS

For standard abbreviations see MIL-STD-12D, *Military Standard Abbreviations for Use on Drawings, Specifications, Standards, and in Technical Documents*.

<u>Abbreviations</u>	<u>Explanation</u>
NIIN	National Item Identification Number (consists of the last 9 digits of the NSN)
RPSTL	Repair Parts and Special Tools Lists
SMR	Source, Maintenance, and Recoverability Code
TMDE	Test, Measurement, and Diagnostic Equipment



342-1279

Figure 1. Dressed Engine and Container

SECTION II			TM9-2320-302-24P			
(1)	(2)	(3)	(4)	(5)	(6)	(7)
ITEM	SMR			PART		
NO	CODE	NSN	CAGEC	NUMBER	DESCRIPTION AND USABLE ON CODES(UOC)	QTY
					GROUP 01 ENGINE	
					GROUP 0100 ENGINE ASSEMBLY	
					FIG. 1 DRESSED ENGINE AND CONTAINER	
1	PAFHD	2815014794199	19207	57K1748	ENGINE,DIESEL DIESEL ENGINE PN:	1
					12466361 (19207) (ENG. & CONTAINER).	
2	XAFHH		19207	12478859.	.ENGINE,DIESEL INCLUDES STARTER	1
					ASSEMBLY,GOVERNOR ASSEMBLY,SERIES	
					60 DIESEL ENGINE W/DDEC IV.....	
3	PFFFF	8115013492459	19207	12389942	.BOX,SHIPPING SEE FIG 238 FOR	1
					BRAKEDOWN.....	
					END OF FIGURE	

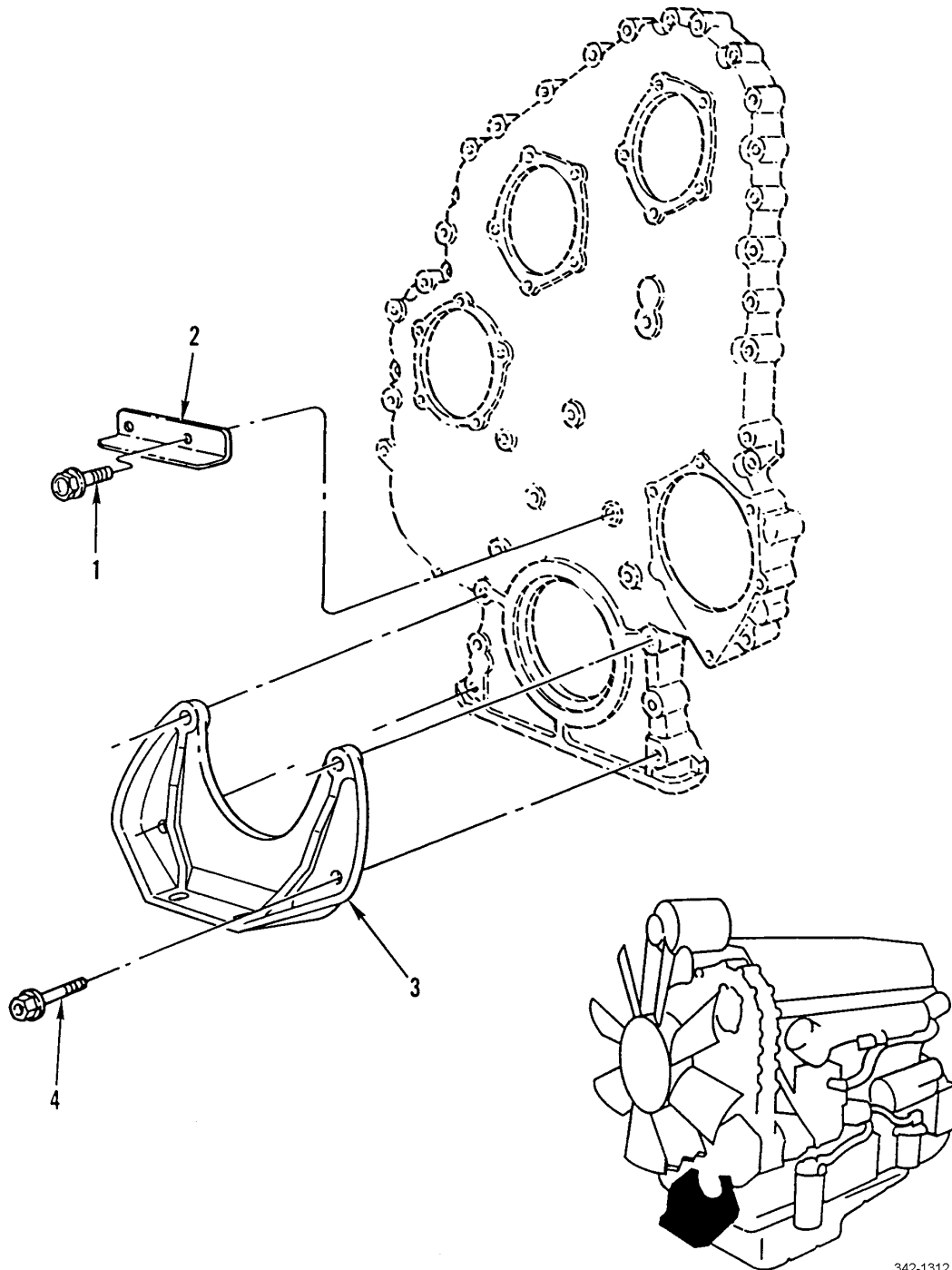
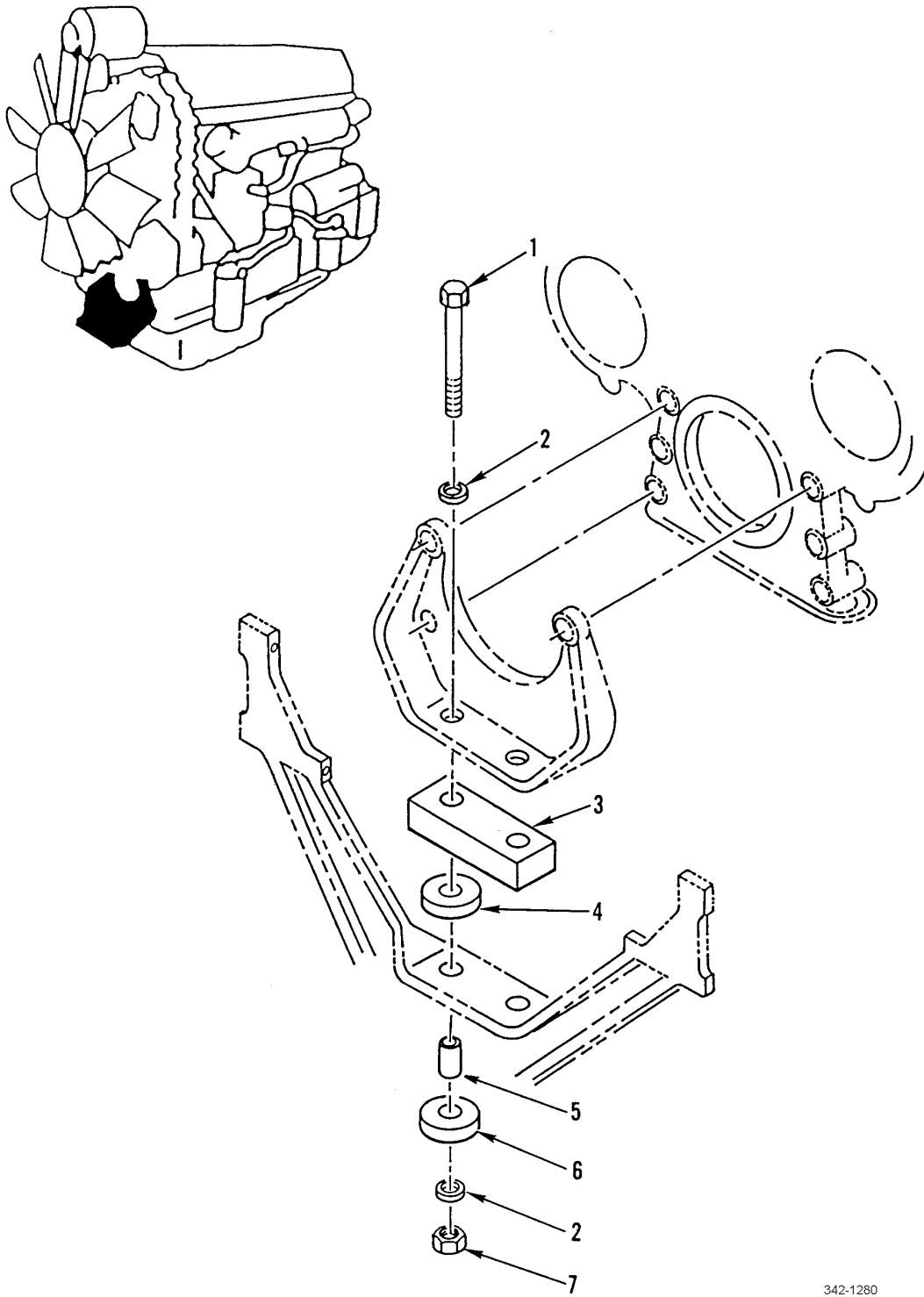


Figure 2. Front Engine Support

SECTION II			TM9-2320-302-24P			
(1)	(2)	(3)	(4)	(5)	(6)	(7)
ITEM	SMR			PART		
NO	CODE	NSN	CAGEC	NUMBER	DESCRIPTION AND USABLE ON CODES(UOC)	QTY
					GROUP 0100 ENGINE ASSEMBLY	
					FIG. 2 FRONT ENGINE SUPPORT	
1	PAFZZ	5306011857051	11862	11504986	BOLT,MACHINE M8 X 1.25 X 14-6G, GR9.8.....	2
2	XDFZZ	5340013555411	72582	23507422	BRACKET,ANGLE.....	1
3	PPFZZ	2510013208289	72582	8929744	BRACKET,ENGINE MOUN.....	1
4	PAFZZ	5305013199882	72582	8929068	SCREW,CAP,HEXAGON H M14 X 2.0 X 140.0 LG, GR10.9.....	4

END OF FIGURE



342-1280

Figure 3. Front Engine Mounting

SECTION II			TM9-2320-302-24P			
(1)	(2)	(3)	(4)	(5)	(6)	(7)
ITEM	SMR			PART		
NO	CODE	NSN	CAGEC	NUMBER	DESCRIPTION AND USABLE ON CODES(UOC)	QTY
GROUP 0100 ENGINE ASSEMBLY						
FIG. 3 FRONT ENGINE MOUNTING						
1	PAFZZ	5305009480677	96906	MS35307-499	SCREW,CAP,HEXAGON H 5.000 X 11UNC-2A.....	2
2	PAFZZ	5310005847799	96906	MS15795-822	WASHER,FLAT .822 ID X 1.469 OD.....	4
3	PAFZZ	5365013326546	64678	01-14976-001	SPACER,PLATE.....	1
4	PAFZZ	5342013327614	76005	SSB33-1001-7	MOUNT,RESILIENT.....	2
5	PAFZZ	5365013333575	64678	01-15047-000	SPACER,SLEEVE.....	2
6	PAFZZ	5342013327615	76005	SSB33-1001-8	MOUNT,RESILIENT.....	2
7	PAFZZ	5310000676356	96906	MS51922-57	NUT,SELF-LOCKING,HE 3/4-10UNC.....	2

END OF FIGURE