

# **TM 9-2350-285-24P**

**SUPERCEDES TM 9-2350-285-24P, 31 AUGUST 1993**

---

**UNIT, DIRECT SUPPORT, AND GENERAL SUPPORT MAINTENANCE  
REPAIR PARTS AND SPECIAL TOOLS LISTS (RPSTL)**

**FOR**

**CARRIER, CARGO: TRACKED, 1-1/2-TON  
M973A1 (NSN 2350-01-281-6451)**

**CARRIER, CARGO: TRACKED, 2-TON  
M1067 (NSN 2350-01-281-6450)**

**CARRIER, COMMAND POST: TRACKED, 1-1/2-TON  
M1065 (NSN 2350-01-281-8324)**

**CARRIER, AMBULANCE: TRACKED, 1-1/2-TON  
M1066 (NSN 2350-01-283-6215)**

Approved for public release; distribution is unlimited.

---

**HEADQUARTERS, DEPARTMENT OF THE ARMY**

**JANUARY 2001**

TECHNICAL MANUAL  
TM 9-2350-285-24P

HEADQUARTERS  
DEPARTMENT OF THE ARMY  
Washington D.C., 15 January 2001

UNIT, DIRECT SUPPORT, AND GENERAL SUPPORT MAINTENANCE  
REPAIR PARTS AND SPECIAL TOOLS LIST (RPSTL)

FOR

CARRIER, CARGO: TRACKED, 1-1/2-TON, M973A1  
(2350-01-281-6451)

CARRIER, CARGO: TRACKED, 2-TON, M1067  
(2350-01-281-6450)

CARRIER, COMMAND POST: TRACKED, 1-1/2-TON, M1065  
(2350-01-281-8324)

CARRIER, AMBULANCE: TRACKED, 1-1/2-TON, M1066  
(2350-01-283-6215)

Current as of 22 November 2000

**REPORTING ERRORS AND RECOMMENDING IMPROVEMENTS**

You can help improve this publication. If you find any mistakes or if you know of a way to improve the procedures, please let us know. Submit your DA Form 2028-2 (Recommended Changes to Publications and Blank Forms), through the Internet, on the Army Electronic Product Support (AEPS) website. The Internet address is <http://aeprs.ria.army.mil>. If you need a password, scroll down and click on "ACCESS REQUEST FORM". The DA Form 2028 is located in the ONLINE FORMS PROCESSING section of the AEPS. Fill out the form and click on SUBMIT. Using this form on the AEPS will enable us to respond quicker to your comments and better manage the DA Form 2028 program. You may also mail, fax or e-mail your letter, DA Form 2028, or Form 2028-2 located at the back of this manual direct to: Technical Publication Information Office, TACOM-RI, 1 Rock Island Arsenal, Rock Island, IL 61299-7630. The e-mail address is: amsta-ac-nml@ria.army.mil. The fax number is DSN 793-0726 or Commercial (309) 782-0726.

**TABLE OF CONTENTS**

|  | Illus/<br>Fig | Page |
|--|---------------|------|
| SECTION I. INTRODUCTION .....              |               | 1    |
| SECTION II. REPAIR PARTS LIST.....         |               | 1-1  |
| GROUP 01 ENGINE                            |               |      |
| 0100- ENGINE ASSEMBLY.....                 |               | 1-1  |
| POWERPACK AND ENGINE ASSEMBLY.....         | 1             | 1-1  |
| ENGINE MOUNTS AND LIFT COMPONENTS.....     | 2             | 2-1  |
| 0101- CRANKCASE, BLOCK, CYLINDER HEAD..... |               | 3-1  |
| CYLINDER HEAD AND COMPONENTS .....         | 3             | 3-1  |
| ENGINE BLOCK AND COMPONENTS .....          | 4             | 4-1  |

Approved for public release; distribution is unlimited.

## TABLE OF CONTENTS (Con't)

|                             |   | Illus/<br>Fig | Page |
|-----------------------------|---|---------------|------|
| 0102-                       | CRANKSHAFT .....  |               | 5-1  |
|                             | CRANKSHAFT AND RELATED PARTS .....                                  | 5             | 5-1  |
| 0103-                       | FLYWHEEL ASSEMBLY .....   |               | 6-1  |
|                             | FLYWHEEL ASSEMBLY AND RELATED PARTS .....                           | 6             | 6-1  |
| 0104-                       | PISTONS, CONNECTING RODS .....                                      |               | 7-1  |
|                             | PISTON AND CONNECTING ROD AND COMPONENTS .....                      | 7             | 7-1  |
| 0105-                       | VALVES, CAMSHAFTS, AND TIMING SYSTEM .....                          |               | 8-1  |
|                             | CAMSHAFT AND TIMING RELATED COMPONENTS.....                         | 8             | 8-1  |
|                             | VALVES, VALVE COVER, TIMING COVER AND RELATED PARTS .....           | 9             | 9-1  |
| 0106-                       | ENGINE LUBRICATION SYSTEM.....                                      |               | 10-1 |
|                             | OIL PAN, LEVEL GAGE, BREATHER TUBE AND RELATED PARTS .....          | 10            | 10-1 |
|                             | OIL PUMP AND RELATED PARTS .....                                    | 11            | 11-1 |
|                             | OIL FILTER AND RELATED PARTS .....                                  | 12            | 12-1 |
|                             | OIL COOLER, LINES AND RELATED PARTS .....                           | 13            | 13-1 |
| 0108-                       | MANIFOLDS .....   |               | 14-1 |
|                             | INTAKE & EXHAUST MANIFOLD AND RELATED PARTS .....                   | 14            | 14-1 |
| <b>GROUP 03 FUEL SYSTEM</b> |   |               |      |
| 0301-                       | CARBURETOR, FUEL INJECTOR .....                                     |               | 15-1 |
|                             | FUEL INJECTION NOZZLE .....   | 15            | 15-1 |
| 0302-                       | FUEL PUMPS .....  |               | 16-1 |
|                             | FUEL INJECTION PUMP RELATED HARDWARE .....                          | 16            | 16-1 |
|                             | FUEL INJECTION PUMP AND COMPONENT PARTS .....                       | 17            | 17-1 |
|                             | VACUUM ADVANCE LINES AND RELATED PARTS .....                        | 18            | 18-1 |
| 0304-                       | AIR CLEANER.....  |               | 19-1 |
|                             | INDUCTION MANIFOLD & AIR CLEANER AND RELATED PARTS.....             | 19            | 19-1 |
| 0305-                       | SUPERCHARGER, BLOWER, TURBOCHARGER OR ALTITUDE<br>COMPENSATOR ..... |               | 20-1 |
|                             | TURBOCHARGER AND RELATED PARTS .....                                | 20            | 20-1 |
| 0306-                       | TANKS, LINES, FITTINGS, HEADERS .....                               |               | 21-1 |
|                             | FUEL INJECTION PUMP LINES AND RELATED PARTS .....                   | 21            | 21-1 |
|                             | FUEL INJECTOR LINES AND RELATED PARTS .....                         | 22            | 22-1 |
|                             | LEFT & RIGHT FUEL TANKS .....                                       | 23            | 23-1 |
|                             | RIGHT FUEL TANK LINES, FITTINGS AND MOUNTING PARTS .....            | 24            | 24-1 |
|                             | LEFT FUEL TANK LINES, FITTINGS AND MOUNTING PARTS .....             | 25            | 25-1 |
|                             | LEFT FUEL TANK LINES, FITTINGS AND MOUNTING PARTS .....             | 26            | 26-1 |
|                             | FUEL LINES AND FITTINGS .....                                       | 27            | 27-1 |
| 0308-                       | ENGINE SPEED GOVERNOR AND CONTROLS .....                            |               | 28-1 |
|                             | VACUUM PUMP .....   | 28            | 28-1 |
| 0309-                       | FUEL FILTERS .....  |               | 29-1 |
|                             | FUEL WATER SEPARATOR .....  | 29            | 29-1 |
|                             | FUEL FILTER .....   | 30            | 30-1 |

## TABLE OF CONTENTS (Con't)

|          |  | Illus/<br>Fig | Page |
|----------|--|---------------|------|
| 0311-    | ENGINE STARTING AIDS .....                                     |               | 31-1 |
|          | GLOW PLUG .....  | 31            | 31-1 |
| 0312-    | ACCELERATOR, THROTTLE OR CHOKE CONTROLS .....                  |               | 32-1 |
|          | THROTTLE CONTROL LINKAGE.....                                  | 32            | 32-1 |
|          | ACCELERATOR PEDAL CABLE AND RELATED PARTS .....                | 33            | 33-1 |
| GROUP 04 | EXHAUST SYSTEM   |               |      |
| 0401-    | MUFFLER AND PIPES .....  |               | 34-1 |
|          | MUFFLER AND EXHAUST PIPE .....                                 | 34            | 34-1 |
| GROUP 05 | COOLING SYSTEM   |               |      |
| 0501-    | RADIATOR, EVAPORATIVE COOLER, OR HEAT EXCHANGER .....          |               | 35-1 |
|          | RADIATOR, COOLANT RECOVERY RESERVOIR AND RELATED PARTS .....   | 35            | 35-1 |
| 0503-    | WATER MANIFOLDS, HEADERS, THERMOSTATS AND HOUSING GASKET ..... |               | 36-1 |
|          | COOLANT HOSES, PIPES AND MOUNTING PARTS .....                  | 36            | 36-1 |
|          | CONNECTING COVER AND GASKET .....                              | 37            | 37-1 |
|          | THERMOSTAT, COVER AND MOUNTING PARTS .....                     | 38            | 38-1 |
| 0504-    | WATER PUMP .....   |               | 39-1 |
|          | WATER PUMP AND RELATED PARTS .....                             | 39            | 39-1 |
| 0505-    | FAN ASSEMBLY .....   |               | 40-1 |
|          | FAN ASSEMBLY AND RELATED PARTS .....                           | 40            | 40-1 |
| GROUP 06 | ELECTRICAL SYSTEM  |               |      |
| 0601-    | GENERATOR, ALTERNATOR .....                                    |               | 41-1 |
|          | ALTERNATOR, MOUNTING BRACKET AND RELATED PARTS .....           | 41            | 41-1 |
|          | ALTERNATOR COMPONENT PARTS .....                               | 42            | 42-1 |
| 0603-    | STARTING MOTOR .....   |               | 43-1 |
|          | STARTING ASSEMBLY AND COMPONENT PARTS .....                    | 43            | 43-1 |
| 0605-    | IGNITION COMPONENTS .....                                      |               | 44-1 |
|          | ENGINE WIRING HARNESS .....                                    | 44            | 44-1 |
| 0607-    | INSTRUMENT OR ENGINE CONTROL PANEL .....                       |               | 45-1 |
|          | CONTROL PANEL AND COMPONENTS .....                             | 45            | 45-1 |
|          | INSTRUMENT PANEL AND COMPONENT PARTS.....                      | 46            | 46-1 |
|          | REAR CAR CONTROL PANEL AND COMPONENT PARTS .....               | 47            | 47-1 |
|          | REAR CAR CONTROL PANEL AND COMPONENT PARTS .....               | 48            | 48-1 |
|          | CONTROL PANEL AND COMPONENT PARTS .....                        | 49            | 49-1 |
|          | CONTROL PANEL HOUSING.....                                     | 50            | 50-1 |
| 0608-    | MISCELLANEOUS ITEMS .....                                      |               | 51-1 |
|          | FUSE BOX COMPONENTS .....                                      | 51            | 51-1 |
|          | REAR CAR TERMINAL BLOCK AND MOUNTING HARDWARE.....             | 52            | 52-1 |
|          | CONNECTION BOX AND COMPONENT PARTS .....                       | 53            | 53-1 |
|          | CONNECTION BOX AND COMPONENT PARTS .....                       | 54            | 54-1 |
|          | POWER PANEL AND COMPONENT PARTS .....                          | 55            | 55-1 |
|          | CONNECTOR ASSEMBLY CABLES .....                                | 56            | 56-1 |

## TABLE OF CONTENTS (Con't)

|   | Illus/<br>Fig | Page |
|---|---------------|------|
| SPEEDLIMITER SWITCH AND COMPONENT PARTS .....                                     | 57            | 57-1 |
| CONTACTOR PLATE ASSEMBLY AND COMPONENT PARTS .....                                | 58            | 58-1 |
| TERMINAL BLOCK AND MOUNTING HARDWARE .....  | 59            | 59-1 |
| FUSE BOX AND COMPONENT PARTS.....   | 60            | 60-1 |
| DOOR SWITCH ASSEMBLY AND MOUNTING HARDWARE FOR REAR CAR .....                     | 61            | 61-1 |
| DOOR SWITCH ASSEMBLY AND MOUNTING HARDWARE FOR FRONT CAR....                      | 62            | 62-1 |
| HANDBRAKE CONTROL SWITCH AND KICKDOWN SWITCH .....                                | 63            | 63-1 |
| CONNECTION BOX AND COMPONENT BOX .....  | 64            | 64-1 |
| INTERCOM AMPLIFIER AND CONNECTION BOX .....                                       | 65            | 65-1 |
| 0609- LIGHTS.....   |               | 66-1 |
| HEADLAMP AND RELATED PARTS.....   | 66            | 66-1 |
| LEFT COMBINATION TAILLAMP AND COMPONENT PARTS .....                               | 67            | 67-1 |
| RIGHT COMBINATION TAILLAMP AND COMPONENT PARTS .....                              | 68            | 68-1 |
| BACKUP LAMP ASSEMBLY AND COMPONENT PARTS.....                                     | 69            | 69-1 |
| TURN SIGNAL AND SIDE MARKER LIGHTS AND COMPONENT PARTS .....                      | 70            | 70-1 |
| MAP READING LIGHTS AND RELATED PARTS .....  | 71            | 71-1 |
| DOMELIGHT AND COMPONENT PARTS.....  | 72            | 72-1 |
| FLUORESCENT LIGHT ASSEMBLY AND COMPONENT PARTS .....                              | 73            | 73-1 |
| FLUORESCENT LIGHT, SPOTLIGHT ASSEMBLIES AND COMPONENT PARTS .                     | 74            | 74-1 |
| SURGICAL LIGHT ASSEMBLY .....   | 75            | 75-1 |
| SPOTLIGHT ASSEMBLY AND MOUNTING PARTS.....  | 76            | 76-1 |
| TAILLIGHT ASSEMBLY AND MOUNTING PARTS .....                                       | 77            | 77-1 |
| FLATBED BACKUP LAMP .....   | 78            | 78-1 |
| LICENSE PLATE LAMP .....  | 79            | 79-1 |
| 0610- SENDING UNITS AND WARNING SWITCHES.....                                     |               | 80-1 |
| ENGINE COOLANT, TURBO PRESSURE, OIL PRESSURE SENSORS AND RPM<br>SENDER UNIT ..... | 80            | 80-1 |
| TRANSMISSION OIL TEMPERATURE SENSOR .....   | 81            | 81-1 |
| SPEEDOMETER SENSOR .....  | 82            | 82-1 |
| BRAKE WARNING SWITCHES .....  | 83            | 83-1 |
| BATTERY THERMOSTAT CABLE ASSEMBLY .....   | 84            | 84-1 |
| 0611- HORN, SIREN .....   |               | 85-1 |
| HORN AND MOUNTING PARTS .....   | 85            | 85-1 |
| 0612- BATTERIES, STORAGE .....  |               | 86-1 |
| BATTERIES, VENT HOSES, BATTERY HEATER AND COVER .....                             | 86            | 86-1 |
| BATTERY BOX, REAR CAR .....   | 87            | 87-1 |
| 0613- HULL OR CHASSIS WIRING HARNESS.....   |               | 88-1 |
| FRONT CAR WIRING HARNESS AND MOUNTING HARDWARE .....                              | 88            | 88-1 |
| PROTECTIVE CAPS, HARNESS CLAMPS AND ATTACHING HARDWARE.....                       | 89            | 89-1 |
| ELECTRICAL PROTECTORS AND ATTACHING HARDWARE .....                                | 90            | 90-1 |
| CABLES, FRONT CAR LIGHTING .....  | 91            | 91-1 |
| REAR CAR WIRING HARNESES AND MOUNTING HARDWARE.....                               | 92            | 92-1 |
| POWER CABLE REAR CAR.....   | 93            | 93-1 |
| REAR CAR WIRING HARNESS, CONNECTORS, AND CLAMPS.....                              | 94            | 94-1 |
| FLATBED WIRING HARNESS, CONNECTORS, AND CABLE TUBE .....                          | 95            | 95-1 |
| POWER CABLES, FRONT AND REAR CAR.....   | 96            | 96-1 |
| INTERCOM CABLES AND ATTACHING HARDWARE .....                                      | 97            | 97-1 |
| REAR CAR ELECTRICAL HARNESS.....  | 98            | 98-1 |
| ELECTRICAL PROTECTORS AND ATTACHING HARDWARE .....                                | 99            | 99-1 |

## TABLE OF CONTENTS (Con't)

|          |   | Illus/<br>Fig | Page  |
|----------|---|---------------|-------|
| 0616-    | VENTILATION EQUIPMENT .....   |               | 100-1 |
|          | VENTILATION FAN .....   | 100           | 100-1 |
| GROUP 07 | TRANSMISSION  |               |       |
| 0705-    | TRANSMISSION SHIFTING COMPONENTS .....  |               | 101-1 |
|          | SHIFTER ASSEMBLY .....  | 101           | 101-1 |
|          | SHIFT LINKAGE, MOUNTS, VACUUM VALVE AND RELATED PARTS .....                           | 102           | 102-1 |
| 0708-    | TORQUE CONVERTER OR FLUID COUPLING .....  |               | 103-1 |
|          | TORQUE CONVERTER .....  | 103           | 103-1 |
| 0710-    | TRANSMISSION ASSEMBLY AND ASSOCIATED PARTS .....                                      |               | 104-1 |
|          | TRANSMISSION ASSEMBLY AND MOUNTING HARDWARE .....                                     | 104           | 104-1 |
|          | TRANSMISSION MOUNT AND BRACKET .....  | 105           | 105-1 |
|          | CONTROL ASSEMBLY, COIL, DETENT PLUNGER, DIAPHRAGM AND OIL PAN .                       | 106           | 106-1 |
|          | GOVERNOR, SHIFT LINKAGE, AND CONTACT .....  | 107           | 107-1 |
|          | TRANSMISSION HOUSING AND RELATED PARTS .....  | 108           | 108-1 |
|          | REAR COVER, FLANGE AND RELATED PARTS .....  | 109           | 109-1 |
|          | TRANSMISSION DIPSTICK AND BREATHER LINE .....   | 110           | 110-1 |
|          | PISTON AND HOUSING ASSEMBLY .....   | 111           | 111-1 |
|          | PISTON, PLANETARY GEARSET, AND SPUR GEARSHAFT .....                                   | 112           | 112-1 |
|          | PLANETARY GEAR, CARRIER, ANTIBLACKLASH GEAR, CLUTCH SUPPORT<br>AND FLANGE PARTS ..... | 113           | 113-1 |
| 0713-    | INTERMEDIATE CLUTCH .....   |               | 114-1 |
|          | FORWARD K1 AND REVERSE B3 CLUTCH PACKS .....  | 114           | 114-1 |
|          | REAR K2 CLUTCH PACK .....   | 115           | 115-1 |
| 0714-    | SERVO UNIT .....  |               | 116-1 |
|          | BRAKE BANDS AND SERVO .....   | 116           | 116-1 |
|          | VALVE ASSEMBLY .....  | 117           | 117-1 |
| 0721-    | COOLERS, PUMPS, MOTORS .....  |               | 118-1 |
|          | PRIMARY AND SECONDARY OIL PUMPS, OIL FILTER AND COVER, AND<br>BREATHER VALVE .....    | 118           | 118-1 |
|          | TRANSMISSION OIL COOLER, LINES AND BRACKETS .....                                     | 119           | 119-1 |
| GROUP 08 | TRANSFER, FINAL DRIVE, PLANETARY AND DROP GEARBOX ASSEMBLIES                          |               |       |
| 0801-    | POWER TRANSFER, FINAL DRIVE, PLANETARY OR DROP GEARBOX<br>ASSEMBLIES .....            |               | 120-1 |
|          | TRANSFER ASSEMBLY .....   | 120           | 120-1 |
| 0803-    | GEARSHIFT, VACUUM BOOSTER AND CONTROLS .....  |               | 121-1 |
|          | TRANSFER SHIFT ROD ASSEMBLY .....   | 121           | 121-1 |
| GROUP 09 | PROPELLER, PROPELLER SHAFTS, UNIVERSAL JOINTS, COUPLER AND CLAMP<br>ASSEMBLY          |               |       |
| 0900 -   | PROPELLER SHAFTS .....  |               | 122-1 |
|          | DRIVE SHAFTS .....  | 122           | 122-1 |

## TABLE OF CONTENTS (Con't)

|  | Illus/<br>Fig | Page  |
|--|---------------|-------|
| GROUP 10 FRONT AXLE  |               |       |
| 1002- DIFFERENTIAL .....                                     |               | 123-1 |
| DIFFERENTIAL GEAR UNIT VENT HOSE AND MOUNTING HARDWARE ..... | 123           | 123-1 |
| FRONT DIFFERENTIAL ASSEMBLY .....                            | 124           | 124-1 |
| GROUP 11 REAR AXLE   |               |       |
| 1102- DIFFERENTIAL .....                                     |               | 125-1 |
| REAR DIFFERENTIAL ASSEMBLY .....                             | 125           | 125-1 |
| GROUP 12 BRAKES  |               |       |
| 1201- HANDBRAKES .....                                       |               | 126-1 |
| PARKING BRAKE PEDAL ASSEMBLY AND COMPONENTS .....            | 126           | 126-1 |
| 1202- SERVICE BRAKES .....                                   |               | 127-1 |
| BRAKE ASSEMBLY AND RELATED PARTS .....                       | 127           | 127-1 |
| 1204- HYDRAULIC BRAKE SYSTEM .....                           |               | 128-1 |
| BRAKE PIPES, FITTINGS AND MOUNTING HARDWARE .....            | 128           | 128-1 |
| 1206- MECHANICAL BRAKE SYSTEM .....                          |               | 129-1 |
| BRAKE PEDAL ASSEMBLY .....                                   | 129           | 129-1 |
| GROUP 13 WHEELS AND TRACKS                                   |               |       |
| 1301- SUSPENSION ASSEMBLY .....                              |               | 130-1 |
| TRACK FRAME SUPPORT AND PIVOT ARMS "A" AND "B" .....         | 130           | 130-1 |
| 1302- TRACK SUPPORT ROLLERS AND BRACKETS .....               |               | 131-1 |
| SUSPENSION SUPPORT WHEEL .....                               | 131           | 131-1 |
| 1303- TRACK IDLERS AND BRACKETS .....                        |               | 132-1 |
| TRACK TENSION ADJUSTER ASSEMBLY .....                        | 132           | 132-1 |
| 1304- TRACK DRIVE SPROCKETS .....                            |               | 133-1 |
| SPROCKET ASSEMBLY AND VEHICLE TRACK .....                    | 133           | 133-1 |
| 1311- WHEEL ASSEMBLY .....                                   |               | 134-1 |
| RUBBER WHEEL ASSEMBLY .....                                  | 134           | 134-1 |
| GROUP 14 STEERING  |               |       |
| 1401- MECHANICAL STEERING GEAR ASSEMBLY .....                |               | 135-1 |
| STEERING UNIT ASSEMBLY .....                                 | 135           | 135-1 |
| 1405- STEERING YOKES .....                                   |               | 136-1 |
| VEHICLE STEERING ASSEMBLY .....                              | 136           | 136-1 |
| 1410- HYDRAULIC PUMP OR FLUID MOTOR ASSEMBLY .....           |               | 137-1 |
| HYDRAULIC PUMP, DRIVE SHAFT AND MOUNTING HARDWARE .....      | 137           | 137-1 |

## TABLE OF CONTENTS (Con't)

|   |  | Illus/<br>Fig | Page  |
|---|--|---------------|-------|
| 1411-   | HOSES, LINES, FITTINGS .....   |               | 138-1 |
|   | HYDRAULIC STEERING LINES, HOSES AND FITTINGS .....   | 138           | 138-1 |
|   | HYDRAULIC FILTER AND ATTACHING HARDWARE .....  | 139           | 139-1 |
| 1412-   | HYDRAULIC OR AIR CYLINDERS .....   |               | 140-1 |
|   | VEHICLE STEERING CYLINDER ASSEMBLY .....   | 140           | 140-1 |
|   | HYDRAULIC STEERING DAMPING MECHANISM .....   | 141           | 141-1 |
| 1413-   | TANKS, RESERVOIR .....   |               | 142-1 |
|   | HYDRAULIC FLUID TANK AND MOUNTING HARDWARE .....   | 142           | 142-1 |
| 1414-   | STEERING SYSTEM VALVES .....   |               | 143-1 |
|   | HYDRAULIC SERVO VALVE .....  | 143           | 143-1 |
| <b>GROUP 15 FRAME, TOWING ATTACHMENTS, DRAWBARS, AND ARTICULATION SYSTEMS</b> |  |               |       |
| 1501-   | FRAME ASSEMBLY .....   |               | 144-1 |
|   | FRONT AND REAR CHASSIS ASSEMBLY .....  | 144           | 144-1 |
|   | FRONT CAR BUMPER ASSEMBLY .....  | 145           | 145-1 |
|   | REAR CAR BUMPER ASSEMBLY .....   | 146           | 146-1 |
| 1503-   | PINTLES AND TOWING ATTACHMENTS.....  |               | 147-1 |
|   | FRONT TOW PINTLE AND REAR PINTLE ADAPTERS .....  | 147           | 147-1 |
|   | TOW HOOK AND RELATED PARTS .....   | 148           | 148-1 |
| <b>GROUP 16 SPRINGS AND SHOCK ABSORBERS</b>                                   |  |               |       |
| 1601-   | SPRINGS .....  |               | 149-1 |
|   | LEAF SPRING AND MOUNTING HARDWARE .....  | 149           | 149-1 |
| <b>GROUP 18 BODY, CAB, HOOD, AND HULL</b>                                     |  |               |       |
| 1801-   | BODY, CAB, HOOD, AND HULL ASSEMBLIES .....   |               | 150-1 |
|   | GEARBOX BRACKET .....  | 150           | 150-1 |
|   | BODY MOUNTS .....  | 151           | 151-1 |
|   | FRONT CAR GRILLES .....  | 152           | 152-1 |
|   | HANDLES, VENTS, HEAT SHIELD, AND INSTRUMENT PANEL BRACKET .....  | 153           | 153-1 |
|   | FRONT CAB HATCHES .....  | 154           | 154-1 |
|   | SIDE HATCH DOOR, GRILLE AND MOUNTING HARDWARE .....  | 155           | 155-1 |
|   | FRONT CAR HATCH DOORS .....  | 156           | 156-1 |
|   | REAR CAR HATCH DOORS .....   | 157           | 157-1 |
|   | REAR CAR SIDE HATCH DOOR .....   | 158           | 158-1 |
|   | COMMUNICATIONS & BATTERIES HATCHES AND RELATED PARTS.....  | 159           | 159-1 |
|   | DASH PANEL ASSEMBLY .....  | 160           | 160-1 |
|   | FRONT AND REAR CAR FRAMES .....  | 161           | 161-1 |
|   | COMMUNICATION REAR CAR FRAME.....  | 162           | 162-1 |
|   | ENGINE ACCESS SIDE COVERS.....   | 163           | 163-1 |
|   | ENGINE COMPARTMENT ACCESS COVER .....  | 164           | 164-1 |
| 1802-   | FENDERS, RUNNING BOARDS WITH MOUNTING AND ATTACHING PARTS,<br>OUTRIGGERS, WINDSHIELD, GLASS, ETC. .... |               | 165-1 |
|   | FRONT CAR WINDOW GLASS .....   | 165           | 165-1 |
|   | REAR CAR WINDOW GLASS .....  | 166           | 166-1 |
| 1804-   | DRAIN VALVES, DRAIN PLUGS, ETC. ....   |               | 167-1 |
|   | DRAIN PLUG AND DRAIN FLAP COMPONENTS FOR FRONT CAR.....  | 167           | 167-1 |



## TABLE OF CONTENTS (Con't)

|          |   | Illus/<br>Fig | Page  |
|----------|---|---------------|-------|
| 1806-    | UPHOLSTERY SEATS AND CARPETS .....  |               | 168-1 |
|          | FRONT SEATS AND SEATBELTS .....   | 168           | 168-1 |
|          | FRONT CAR REAR SEATBELTS .....  | 169           | 169-1 |
|          | REAR CAR SEATBELTS .....  | 170           | 170-1 |
|          | REAR CAR BACKREST ASSEMBLY .....  | 171           | 171-1 |
|          | COMMUNICATION CAR SEAT ASSEMBLY .....   | 172           | 172-1 |
|          | REAR COMMUNICATION CAR OPERATOR'S SEAT .....                                      | 173           | 173-1 |
|          | FLOOR MATS .....  | 174           | 174-1 |
|          | SUN VISORS AND BLACKOUT CURTAINS .....  | 175           | 175-1 |
|          | COMMUNICATION BLACKOUT CURTAINS .....   | 176           | 176-1 |
| 1808-    | STOWAGE RACKS, BOXES, STRAPS CARRYING CASES, CABLE REELS,<br>HOSE REELS, ETC..... |               | 177-1 |
|          | RADIO RACKS AND STORAGE NET .....   | 177           | 177-1 |
|          | FRONT CAR ACCESSORY BAG, PROTECTOR ARCH, AND HOLDER<br>BRACKETS .....             | 178           | 178-1 |
|          | WINCH AND FIRE EXTINGUISHER MOUNTING BRACKETS .....                               | 179           | 179-1 |
|          | FRONT CAR ACCESSORY BOX ASSEMBLY .....  | 180           | 180-1 |
|          | STORAGE RACKS AND BRACKETS.....   | 181           | 181-1 |
|          | ROOF STORAGE BOX .....  | 182           | 182-1 |
|          | REAR DOOR STOWAGE RACK.....   | 183           | 183-1 |
|          | MAP SHELF ASSEMBLY, FRONT CAR .....   | 184           | 184-1 |
|          | MAGNETIC BOARD, NET, AND COAT HOOKS .....   | 185           | 185-1 |
|          | SHELF ASSEMBLY .....  | 186           | 186-1 |
|          | CAN SHELF ASSEMBLY, REAR CAR.....   | 187           | 187-1 |
|          | PARTITION AND TABLE UNIT, FRONT CAR .....   | 188           | 188-1 |
|          | RADIO TABLE .....   | 189           | 189-1 |
| 1810-    | CARGO BODY .....  |               | 190-1 |
|          | FLATBED ASSEMBLY AND MOUNTING HARDWARE .....                                      | 190           | 190-1 |
|          | FLATBED SIDE PANEL COMPONENTS .....   | 191           | 191-1 |
|          | FLATBED REAR PANEL COMPONENTS.....  | 192           | 192-1 |
| 1812-    | SPECIAL PURPOSE BODIES .....  |               | 193-1 |
|          | STRETCHER ASSEMBLY .....  | 193           | 193-1 |
|          | DRESSING UNIT ASSEMBLY .....  | 194           | 194-1 |
|          | FRONT AND REAR CAR FRAMES .....   | 195           | 195-1 |
| GROUP 20 | HOIST, WINCH, CAPSTAN, WINDLASS, POWER CONTROL UNIT, AND POWER<br>TAKE-OFF        |               |       |
| 2001-    | HOIST, CAPSTAN, WINDLASS, CRANE, OR WINCH ASSEMBLY .....                          |               | 196-1 |
|          | WINCH ASSEMBLY .....  | 196           | 196-1 |
|          | WINCH BRAKE .....   | 197           | 197-1 |
|          | WINCH DRUM AND HOUSING.....   | 198           | 198-1 |
|          | PLANETARY GEARS AND HOUSING .....   | 199           | 199-1 |
|          | PLANETARY GEARS AND HOUSING .....   | 200           | 200-1 |
|          | WINCH ELECTRICAL COMPONENTS.....  | 201           | 201-1 |
|          | WINCH MOTOR COMPONENTS.....   | 202           | 202-1 |
|          | WINCH MOUNTING BRACKET AND WIRE ROPE .....  | 203           | 203-1 |
|          | WINCH ELECTRICAL SWITCH CABLE ASSEMBLY .....                                      | 204           | 204-1 |
|          | WINCH POWER CABLE ASSEMBLY .....  | 205           | 205-1 |
| GROUP 22 | BODY CHASSIS OR HULL, AND ACCESSORY ITEMS   |               |       |
| 2201-    | CANVAS, RUBBER, OR RELATED ITEMS .....  |               | 206-1 |
|          | FLATBED MUDFLAPS .....  | 206           | 206-1 |

## TABLE OF CONTENTS (Con't)

|  |   | Illus/<br>Fig | Page    |
|--|---|---------------|---------|
| 2202-  | ACCESSORY ITEMS .....                             |               | 207-1   |
|  | WINDSHIELD WASHER RELATED COMPONENT PARTS.....    | 207           | 207-1   |
|  | WINDSHIELD WIPER ASSEMBLY .....                   | 208           | 208-1   |
|  | REAR CAR WINDSHIELD WIPER .....                   | 209           | 209-1   |
|  | REARVIEW MIRROR .....                             | 210           | 210-1   |
|  | REFLECTORS .....                                  | 211           | 211-1   |
|  | ANTENNA COVER PLATES AND GROUND SCREW .....       | 212           | 212-1   |
| 2205-  | BILGE PUMPS .....                                 |               | 213-1   |
|  | BILGE PUMP AND COMPONENT PARTS .....              | 213           | 213-1   |
| 2207-  | WINTERIZATION EQUIPMENT .....                     |               | 214-1   |
|  | AMBULANCE DIESEL HEATER .....                     | 214           | 214-1   |
|  | HEATER AIR PASSAGE ASSEMBLY .....                 | 215           | 215-1   |
|  | AMBULANCE REAR CAR HEATER .....                   | 216           | 216-1   |
|  | DIESEL HEATER FUEL PUMP .....                     | 217           | 217-1   |
|  | FRONT CAR HEATER ASSEMBLY .....                   | 218           | 218-1   |
|  | FRONT HEATER STRIP PANELS AND AIR DUCT HOSE ..... | 219           | 219-1   |
|  | FRONT CAR HEATER HOSES .....                      | 220-          | 220-1   |
|  | HEATER COMPONENTS FOR REAR CAR .....              | 221           | 221-1   |
|  | REAR CAR HEATER ASSEMBLY .....                    | 222           | 222-1   |
|  | WATER HEATER HOSES AND RELATED PARTS .....        | 223           | 223-1   |
|  | WATER HEATER ASSEMBLY .....                       | 224           | 224-1   |
|  | WATER HEATER COMPONENTS .....                     | 225           | 225-1   |
|  | HEATER PUMP ASSEMBLY .....                        | 226           | 226-1   |
| 2210-  | DATA PLATES AND INSTRUCTION HOLDERS .....         |               | 227-1   |
|  | DECALS .....                                      | 227           | 227-1   |
|  | DECALS .....                                      | 228           | 228-1   |
| <b>GROUP 33 SPECIAL PURPOSE KITS</b>           |   |               |         |
| 3303-  | WINTERIZATION KITS .....                          |               | 229-1-1 |
|  | SWINGFIRE HEATER AND RELATED COMPONENTS.....      | 229           | 229-1   |
|  | SWINGFIRE HOSES AND CLAMPS .....                  | 230           | 230-1   |
|  | ENGINE FIRE SUPPRESSION KIT .....                 | 231           | 231-1   |
| <b>GROUP 94 REPAIR KITS</b>                    |   |               |         |
| 9401-  | REPAIR KITS .....                                 |               | KITS-1  |
|  | KIT .....   | KIT           | KIT-1   |
| <b>GROUP 95 GENERAL USE STANDARDIZED PARTS</b> |   |               |         |
| 9501-  | HARDWARE SUPPLIES AND BULK MATERIEL .....         |               | BULK-1  |
|  | BULK .....  | BULK          | BULK-1  |
| <b>SECTION III. SPECIAL TOOLS</b>              |   |               |         |
| <b>GROUP 26 TOOLS AND TEST EQUIPMENT</b>       |   |               |         |
| 2604-  | SPECIAL TOOLS .....                               |               | 232-1   |
|  | ORGANIZATIONAL TOOLS-1 .....                      | 232           | 232-1   |
|  | ORGANIZATIONAL TOOLS-2 .....                      | 233           | 233-1   |
|  | ORGANIZATIONAL TOOLS-3 .....                      | 234           | 234-1   |
|  | ORGANIZATIONAL TOOLS-4 .....                      | 235           | 235-1   |

## TABLE OF CONTENTS (Con't)

|  | <b>Illus/<br/>Fig</b> | <b>Page</b> |
|--|-----------------------|-------------|
| ORGANIZATIONAL TOOLS-5.....                    | 236                   | 236-1       |
| DIRECT SUPPORT TOOLS-1.....                    | 237                   | 237-1       |
| DIRECT SUPPORT TOOLS-2.....                    | 238                   | 238-1       |
| DIRECT SUPPORT TOOLS-3.....                    | 239                   | 239-1       |
| DIRECT SUPPORT TOOLS-4.....                    | 240                   | 240-1       |
| DIRECT SUPPORT TOOLS-5.....                    | 241                   | 241-1       |
| DIRECT SUPPORT TOOLS-6.....                    | 242                   | 242-1       |
| DIRECT SUPPORT TOOLS-7.....                    | 243                   | 243-1       |
| DIRECT SUPPORT TOOLS-8.....                    | 244                   | 244-1       |
| GENERAL SUPPORT TOOLS-1.....                   | 245                   | 245-1       |
| GENERAL SUPPORT TOOLS-2.....                   | 246                   | 246-1       |
| GENERAL SUPPORT TOOLS-3.....                   | 247                   | 247-1       |
| GENERAL SUPPORT TOOLS-4.....                   | 248                   | 248-1       |
| GENERAL SUPPORT TOOLS-5.....                   | 249                   | 249-1       |
| <br><b>SECTION IV. CROSS-REFERENCE INDEXES</b> |                       |             |
| NATIONAL STOCK NUMBER INDEX .....              |                       | I-1         |
| PART NUMBER INDEX .....                        |                       | I-3         |

# UNIT, DIRECT SUPPORT, AND GENERAL SUPPORT MAINTENANCE REPAIR PARTS AND SPECIAL TOOLS LISTS (RPSTL)

## Section I. INTRODUCTION

### 1. SCOPE.

This Repair Parts and Special Tools Lists (RPSTL) lists and authorizes spares and repair parts; special tools; special test, measurement, and diagnostic equipment (TMDE); and other special support equipment required for performance of Unit, Direct Support, and General Support Maintenance of the M973A1, M1067, M1065, and M1066 SUSV Carriers. It authorizes the requisitioning, issue, and disposition of spares, repair parts, and special tools as indicated by the Source, Maintenance and Recoverability (SMR) codes.

### 2. GENERAL.

In addition to Section I, Introduction, this RPSTL is divided into the following sections:

a. **Section II, Repair Parts List.** A list of spares and repair parts authorized by this RPSTL for use in the performance of maintenance. The list also includes parts which must be removed for replacement of the authorized parts. Parts lists are composed of functional groups in ascending alphanumeric sequence, with the parts in each group listed in ascending figure and item number sequence. Bulk materials are listed by item name sequence at the end of the section. Repair part kits are listed separately in their own functional group within Section II. Repair parts for repairable special tools are also listed in this section. Items listed are shown on the associated illustration(s)/figure(s).

b. **Section III, Special Tools List.** A list of special tools, special TMDE, and other special support equipment authorized by this RPSTL [as indicated by Basis of Issue (BOI) information in the DESCRIPTION AND USABLE ON CODE (UOC) column] for the performance of maintenance.

c. **Section IV, Cross-reference Indexes.** A list, in National Item Identification Number (NIIN) sequence, of all National stock numbered items appearing in the listing, followed by a list in alphanumeric sequence of all part numbers appearing in the listings. National Stock Numbers (NSN) and part numbers are cross-referenced to each illustration figure and item number appearance.

### 3. EXPLANATION OF COLUMNS (SECTIONS II AND III).

- a. **ITEM NO - Column (1).** Indicates the number used to identify items called out in the illustration.
- b. **SMR CODE - Column (2).** The SMR code is a five-position code containing supply/requisitioning information, maintenance category authorization criteria, and disposition instruction, as shown in the following breakout:

| Source Code          | Maintenance Code                          |  | Recoverability Code   |
|----------------------|---|--|---|
| XXxxx                | xxXXx                                     |  | xxxxX   |
| 1st two positions    | 3d position                               | 4th position                             | 5th position  |
| How you get an item. | Who can install, replace or use the item. | Who can do complete repair* on the item. | Who determines disposition action on an unserviceable item. |

\* *Complete Repair:* Maintenance capacity, capability, and authority to perform all corrective maintenance tasks of the "Repair" function in a use/user environment in order to restore serviceability to a failed item.

---

### 3. EXPLANATION OF COLUMNS (SECTIONS II AND III) (Con't).

---

(1) **Source Code.** The source code tells you how to get an item needed for maintenance, repair, or overhaul of an end item/equipment. Explanations of source codes follow:

| <u>Code</u>   | <u>Application/Explanation</u>   |
|---|--|
| PA<br>PB<br>PC**<br>PD<br>PE<br>PF<br>PG  | <p>Stocked items; use the applicable NSN to request/requisition items with these source codes. They are authorized to the maintenance category indicated by the code entered in the third position of the SMR code.</p> <p style="text-align: center;"><i>**Items coded PC are subject to deterioration.</i></p> <p>.....</p>  |
| KD<br>KF<br>KB  | <p>Items with these codes are not to be requested/requisitioned individually. They are part of a kit which is authorized to the maintenance category indicated in the third position of the SMR code. The complete kit must be requisitioned and applied.</p> <p>.....</p>   |
| MO - Made at UM/AVUM Level<br>MF - Made at DS/AVUM Level<br>MH - Made at GS Level<br>ML - Made at Specialized Repair Activity (SRA)<br>MD - Made at Depot | <p>Items with these codes are not to be requested/requisitioned individually. They must be made from bulk materiel which is identified by the part number in the DESCRIPTION AND USABLE ON CODE (UOC) column and listed in the bulk materiel group of the repair parts list in this RPSTL. If the item is authorized to you by the third position of the SMR code, but the source code indicates it is made at a higher level, order the item from the higher level of maintenance.</p> <p>.....</p> |
| AO - Assembled by UM/AVUM Level<br>AF - Assembled by DS/AVUM Level<br>AH - Assembled by GS Level<br>AL - Assembled by SRA<br>AD - Assembled by Depot      | <p>Items with these codes are not to be requested/requisitioned individually. The parts that make up the assembled item must be requisitioned or fabricated and assembled at the level of maintenance indicated by the source code. If the 3d position code of the SMR code authorizes you to replace the item, but the source code indicates the item is assembled at a higher level of maintenance.</p>  |

**NOTE**

**Cannibalization of controlled exchange, when authorized, may be used as a source of supply for items with the following source codes, except for those source coded "XA".**

| <u>Code</u> | <u>Application/Explanation</u>   |
|-------------|--|
| XA.....     | DO NOT requisition an "XA"-coded item. Order its next higher assembly.                         |
| XB.....     | If an "XB" item is not available from salvage, order it using the CAGEC and part number given. |

**3. EXPLANATION OF COLUMNS (SECTIONS II AND III) (Con't).**

| <u>Code</u> | <u>Application/Explanation</u>  |
|-------------|---|
| XC.....     | Installation drawing, diagram, instruction sheet, or field service drawing that is identified by manufacturer's part number.                |
| XD.....     | Item is not stocked. Order an "XD"-coded item through normal supply channels using the CAGEC and part number given, if no NSN is available. |

(2) **Maintenance Code.** Maintenance codes tell you the level(s) of maintenance authorized to use and repair support items. The maintenance codes are entered in the third and fourth positions of the SMR code as follows:

(a) The maintenance code entered in the third position tells you the lowest maintenance level authorized to remove, replace, and use an item. The maintenance code entered in the third position will indicate authorization to one of the following levels of maintenance:

| <u>Code</u> | <u>Application/Explanation</u>   |
|-------------|--|
| C.....      | Operator or Crew Maintenance done within Unit Maintenance or aviation unit maintenance.                |
| O.....      | Unit Maintenance or aviation unit can remove, replace, and use the item.                               |
| F.....      | Direct Support Maintenance or aviation intermediate maintenance can remove, replace, and use the item. |
| H.....      | General Support Maintenance can remove, replace, and use the item.                                     |
| L.....      | Specialized Repair Activity (SRA) can remove, replace, and use the item.                               |
| D.....      | Depot Maintenance can remove, replace, and use the item.   |

**NOTE**

**Some limited repair may be done on the item at a lower level of maintenance, if authorized by the Maintenance Allocation Chart (MAC) and SMR codes.**

(b) The maintenance code entered in the fourth position tells whether or not the item is to be repaired and identifies the lowest maintenance level with the capability to do complete repair (i.e., perform all authorized "Repair" functions). The maintenance code in the fourth position will indicate authorization to one of the following levels of maintenance:

| <u>Code</u> | <u>Application/Explanation</u>  |
|-------------|---|
| O.....      | Unit Maintenance or aviation unit maintenance is the lowest level that can do complete repair of the item.  |
| F.....      | Direct Support Maintenance or aviation intermediate maintenance is the lowest level that can do complete repair of the item.  |
| H.....      | General Support Maintenance is the lowest level that can do complete repair of the item.  |
| L.....      | Specialized Repair Activity (SRA) is the lowest level that can do complete repair of the item.  |
| D.....      | Depot Maintenance is the lowest level that can do complete repair of the item.  |
| Z.....      | Nonreparable. No repair is authorized.  |
| B.....      | No repair is authorized. (No parts or special tools are authorized for the maintenance of a "B"-coded item.) However, the item may be reconditioned by adjusting, lubricating, etc., at the user level. |

**3. EXPLANATION OF COLUMNS (SECTIONS II AND III) (Con't).**

(3) **Recoverability Code.** Recoverability codes are assigned to items to indicate the disposition action on unserviceable items. The recoverability code is entered in the fifth position of the SMR code as follows:

| <u>Code</u> | <u>Application/Explanation</u>  |
|-------------|---|
| Z . . . . . | Nonreparable item. When unserviceable, condemn and dispose of the item at the level of maintenance shown in the third position of the SMR code.   |
| O . . . . . | Reparable item. When uneconomically reparable, condemn and dispose of the item at Unit Maintenance or aviation unit maintenance.  |
| F . . . . . | Reparable item. When uneconomically reparable, condemn and dispose of the item at Direct Support Maintenance or aviation intermediate maintenance.  |
| H . . . . . | Reparable item. When uneconomically reparable, condemn and dispose of the item at General Support Maintenance.  |
| D . . . . . | Reparable item. When beyond lower level repair capability, return to Depot Maintenance. Condemnation and disposal of item not authorized below Depot Maintenance.   |
| L . . . . . | Reparable item. Condemnation and disposal of item not authorized below Specialized Repair Activity (SRA).   |
| A . . . . . | Item requires special handling or condemnation procedures because of specific reasons (e.g., precious metal content, high dollar value, critical material, or hazardous material). Refer to appropriate manuals/directives for specific instructions. |

c. **NSN - Column (3).** Lists the National Stock Number assigned to the item. Use the NSN for requests/requisitions.

d. **CAGEC - Column (4).** The Commercial and Government Entity (CAGE) Code (C) is a five-digit alphanumeric code which is used to identify the manufacturer, distributor, or Government agency, etc., that supplies the item.

**NOTE**

**When you use an NSN to requisition an item, the item you receive may have a different part number from the part ordered.**

e. **PART NUMBER - Column (5).** Indicates the primary number used by the manufacturer (individual, company, firm, corporation, or Government activity), which controls the design and characteristics of the item by means of its engineering drawings, specifications, standards, and inspection requirements to identify an item or range of items.

f. **DESCRIPTION AND USABLE ON CODE (UOC) - Column (6).** This column includes the following information:

- (1) The Federal item name and, when required, a minimum description to identify the item.
- (2) Physical security classification. Not applicable.
- (3) Items that are included in kits and sets are listed below the name of the kit or set.
- (4) Spare/repair parts that make up an assembled item are listed immediately following the assembled item line entry.

---

### 3. EXPLANATION OF COLUMNS (SECTIONS II AND III) (Con't).

---

(5) Part numbers for bulk materials are referenced in this column in the line item entry for the item to be manufactured/fabricated.

(6) When the item is not used with all serial numbers of the same model, the effective serial numbers are shown on the last line(s) of the description (before UOC).

(7) The Usable On Code, when applicable (see paragraph 5, Special Information).

(8) In the Special Tools List section, the Basis of Issue (BOI) appears as the last line(s) in the entry for each special tool, special TMDE, and other special support equipment. When density of equipments supported exceeds density spread indicated in the Basis of Issue, the total authorization is increased proportionately.

(9) The statement "END OF FIGURE" appears just below the last item description in Column 6 for a given figure in both Section II and Section III.

g. **QTY - Column (7).** The QTY (quantity per figure) column indicates the quantity of the item used in the breakout shown on the illustration/figure, which is prepared for a functional group, subfunctional group, group or an assembly. A "V" appearing in this column in lieu of a quantity indicates that the quantity is variable and the quantity may vary from application to application.

---

### 4. EXPLANATION OF COLUMNS (SECTION IV).

---

a. **National Stock Number (NSN) Index.**

(1) **STOCK NUMBER Column.** This column lists the NSN by National Item Identification Number (NIIN) sequence. The NIIN consists of the last nine digits of the NSN (i.e., NSN 5305-01-674-1467). When using this column to locate an item, ignore the first four digits of the NSN. However, the complete NSN should be used when ordering items by stock number.

(2) **FIG. Column.** This column lists the number of the figure where the item is identified/located. The figures are in numerical order in Section II and Section III.

(3) **ITEM Column.** The item number identifies the item associated with the figure listed in the adjacent FIG. column. This item is also identified by the NSN listed on the same line.

b. **Part Number Index.** Part numbers in this index are listed by part number in ascending alphanumeric sequence (i.e., vertical arrangement of letter and number combination which places the first letter or digit of each group in order A through Z, followed by the numbers 0 through 9 and each following letter or digit in like order).

(1) **CAGEC Column.** The Commercial and Government Entity (CAGE) Code (C) is a five-digit alphanumeric code used to identify the manufacturer, distributor, or Government agency, etc., that supplies the item.

(2) **PART NUMBER Column.** Indicates the primary number used by the manufacturer (individual, firm, corporation, or Government activity) which controls the design and characteristics of the item by means of its engineering drawings, specifications, standards, and inspection requirements to identify an item or range of items.

(3) **STOCK NUMBER Column.** This column lists the NSN for the associated part number and manufacturer identified in the PART NUMBER and CAGEC columns to the left.

(4) **FIG. Column.** This column lists the number of the figure where the item is identified/located in Section II and Section III.

(5) **ITEM Column.** The item number assigned to the item as it appears in the figure referenced in the FIG. column.



## 5. SPECIAL INFORMATION.

a. **Usable On Code.** The Usable On Code appears in the lower left corner of the DESCRIPTION column heading.

| <u>Code</u> | <u>Used On</u>       |
|-------------|----------------------|
| A01         | Command Post Carrier |
| A02         | Ambulance Carrier    |
| A03         | Flatbed Carrier      |
| A04         | Cargo Carrier        |

b. **Fabrication Instructions.** Bulk materials required to manufacture items are listed in the Bulk Material functional group of this RPSTL.

c. **Assembly Instructions.** Detailed assembly instructions for items source coded to be assembled from component spare/repair parts are found in the applicable maintenance level manual. Items that make up the assembly are listed immediately following the assembly item entry or reference is made to an applicable figure.

d. **Kits.** Line item entries for repair kits appear in Group 9401 in Section II.

e. **Index Numbers.** Items which have the word BULK in the FIG. column will have an index number shown in the item column. This index number is a cross-reference between the National Stock Number Index, the Part Number Index, and the bulk material list in Section II.

f. **Associated Publications.** The publications listed below pertain to the M915 Family of Vehicles and their components:

| <u>Publication</u> | <u>Short Title</u>  |
|--------------------|---|
| LO 9-2350-285-12   | Lubrication Order for M973A1, M1067, M1065, and M1066 SUSV Carriers                                     |
| TM 9-2350-285-10   | Operator's Manual for M973A1, M1067, M1065, and M1066 SUSV Carriers                                     |
| TM 9-2350-285-20   | Unit Maintenance Manual for M973A1, M1067, M1065, and M1066 SUSV Carriers                               |
| TM 9-2350-285-34   | Direct Support and General Support Maintenance Manual for M973A1, M1067, M1065, and M1066 SUSV Carriers |

## 6. HOW TO LOCATE REPAIR PARTS.

a. **When National Stock Number or Part Number is Not Known:**

(1) **First.** Using the Table of Contents, determine the assembly group or subassembly group to which the item belongs. This is necessary since figures are prepared for assembly groups and subassembly groups, and listings are divided into the same groups.

(2) **Second.** Find the figure covering the assembly group or subassembly group to which the item belongs.

---

## 6. HOW TO LOCATE REPAIR PARTS (Con't).

---

b. **When National Stock Number or Part Number is Known:**

(1) **First.** Using the National Stock Number Index or Part Number Index, find the pertinent NSN or part number. The NSN Index is in National Item Identification Number (NIIN) sequence [see paragraph 4.a(1)]. The part numbers in the Part Number Index are listed in ascending alphanumeric sequence (see paragraph 4.b). Both indexes cross-reference you to the illustration/figure and item number of the item you are looking for.

(2) **Second.** Turn to the figure and item number, verify that the item is the one you're looking for, then locate the item number in the repair parts list for the figure.

---

## 7. ABBREVIATIONS.

---

For standard abbreviations see MIL-STD-12D, *Military Standard Abbreviations for Use on Drawings, Specifications, Standards, and in Technical Documents*.

| <b><u>Abbreviations</u></b> | <b><u>Explanation</u></b>  |
|-----------------------------|--|
| NIIN . . . . .              | National Item Identification Number (consists of the last 9 digits of the NSN) |
| RPSTL . . . . .             | Repair Parts and Special Tools Lists   |
| SMR . . . . .               | Source, Maintenance, and Recoverability Code                                   |
| TMDE . . . . .              | Test, Measurement, and Diagnostic Equipment                                    |

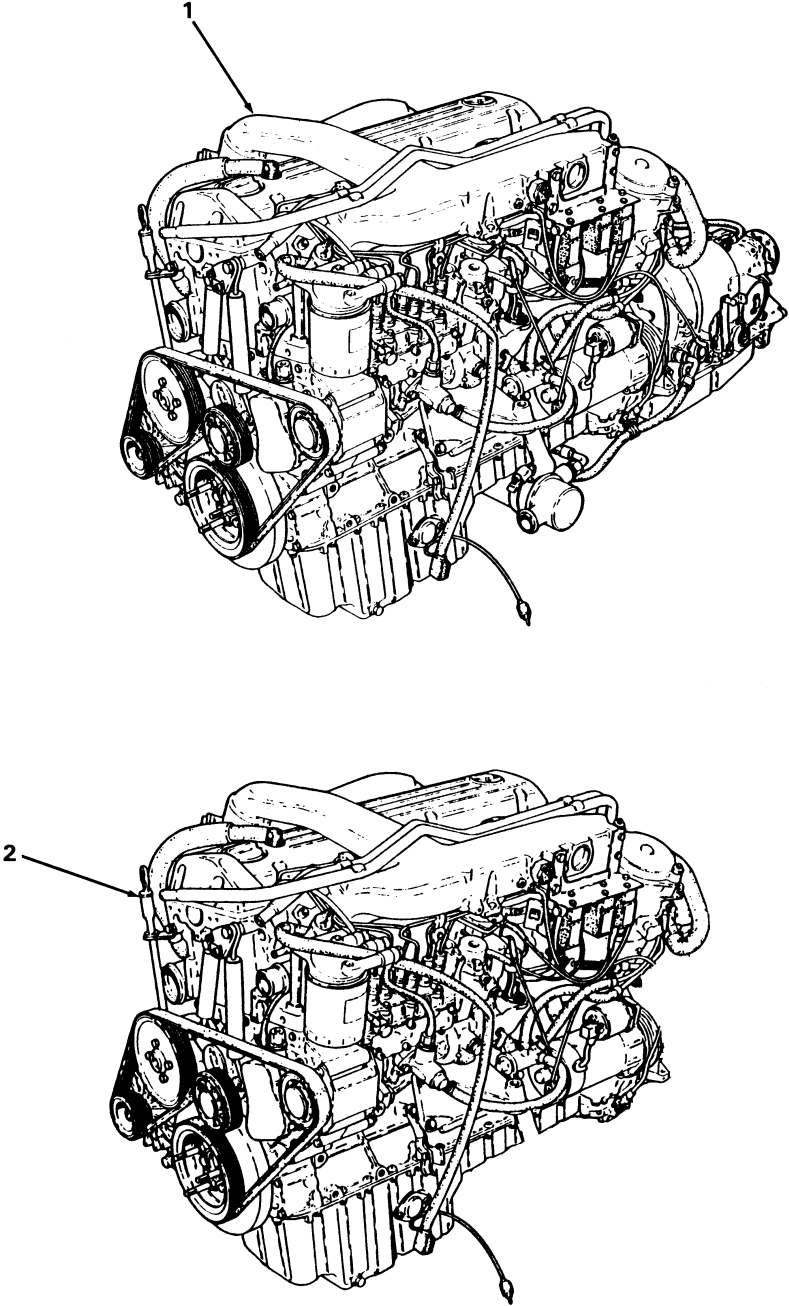


FIGURE 1. POWERPACK AND ENGINE ASSEMBLY.

| SECTION II |       |               | TM9-2350-285-24P |           |                                      |     |
|------------|-------|---------------|------------------|-----------|--------------------------------------|-----|
| (1)        | (2)   | (3)           | (4)              | (5)       | (6)                                  | (7) |
| ITEM       | SMR   |               |                  | PART      |                                      |     |
| NO         | CODE  | NSN           | CAGEC            | NUMBER    | DESCRIPTION AND USABLE ON CODES(UOC) | QTY |
|            |       |               |                  |           | GROUP 01 ENGINE                      |     |
|            |       |               |                  |           | GROUP 0100 ENGINE ASSEMBLY           |     |
|            |       |               |                  |           | FIG. 1 POWERPACK AND ENGINE ASSEMBLY |     |
| 1          | AFOFH |               | 0BAT5            | S2000.    | POWERPACK, INST.....                 | 1   |
| 2          | PAFHH | 2815013756838 | 0BAT5            | 90210-991 | ENGINE, DIESEL.....                  | 1   |

END OF FIGURE

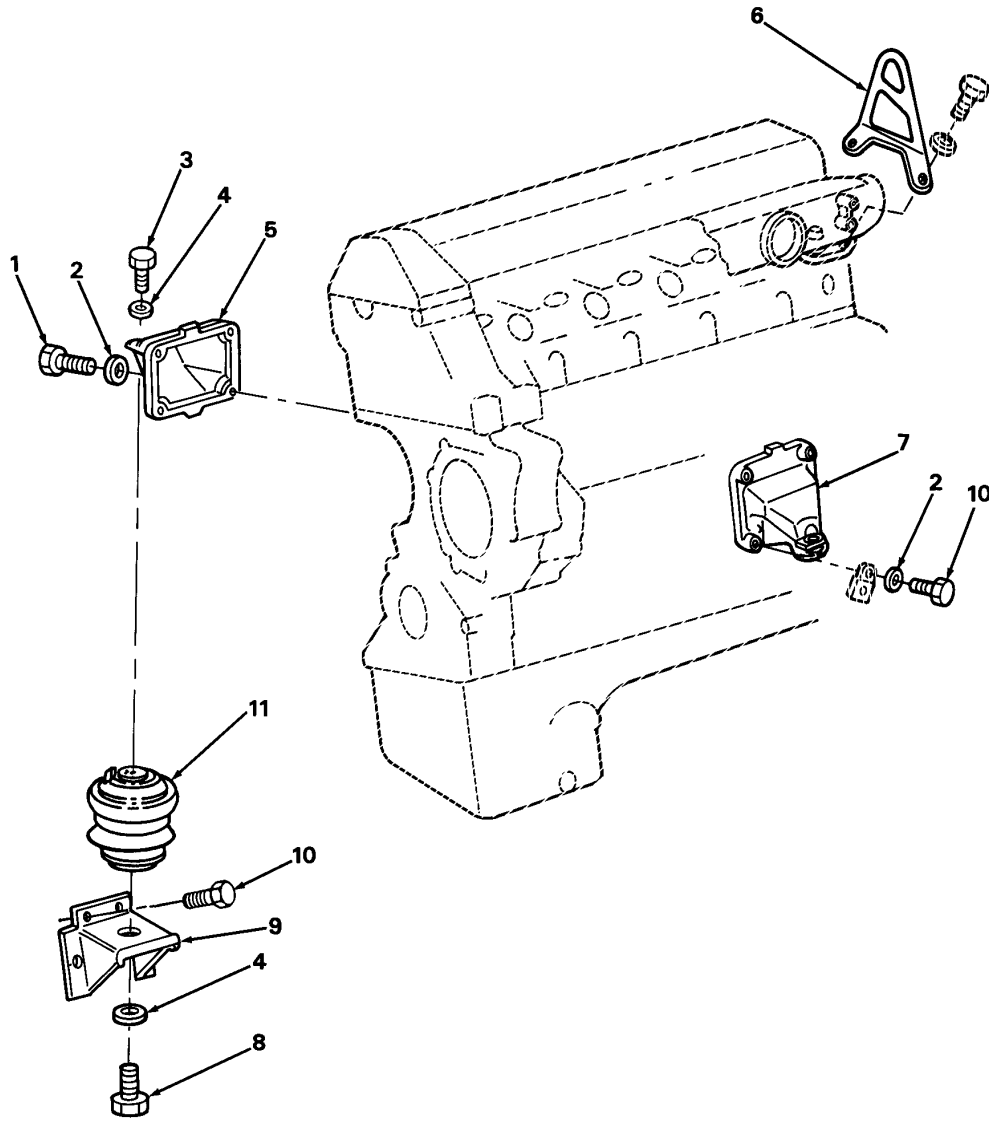
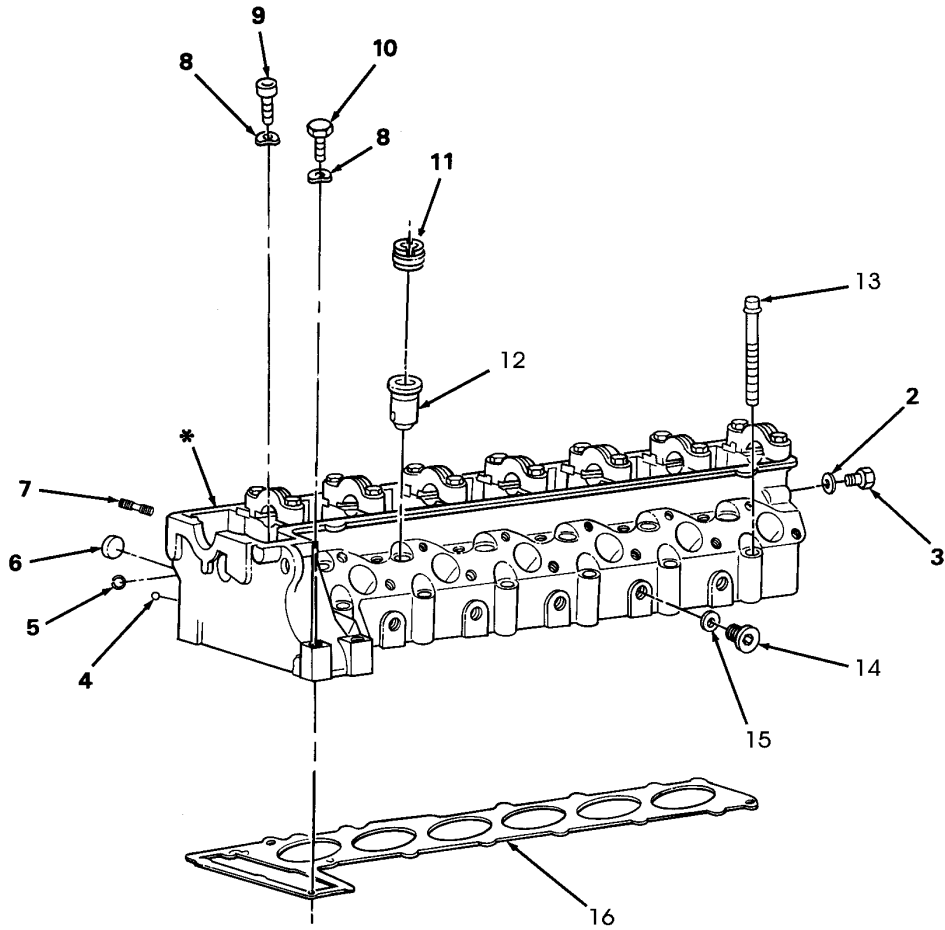


FIGURE 2. ENGINE MOUNTS AND LIFT COMPONENTS.

| SECTION II                               |       |               | TM9-2350-285-24P |           |  |     |
|--|-------|---------------|------------------|-----------|--|-----|
| (1)                                      | (2)   | (3)           | (4)              | (5)       | (6)  | (7) |
| ITEM                                     | SMR   |               | PART             |           |  |     |
| NO                                       | CODE  | NSN           | CAGEC            | NUMBER    | DESCRIPTION AND USABLE ON CODES(UOC)                 | QTY |
| GROUP 0100 ENGINE ASSEMBLY               |       |               |                  |           |  |     |
| FIG. 2 ENGINE MOUNTS AND LIFT COMPONENTS |       |               |                  |           |  |     |
| 1  | PFOZZ | 5306011670769 | OBAT5            | 90448-991 | BOLT,MACHINE.....                                    | 7   |
| 2  | PFOZZ | 5310011654745 | OBAT5            | 90712-991 | WASHER,FLAT.....                                     | 8   |
| 3  | PFOZZ | 5306011654626 | OBAT5            | 90466-991 | BOLT,MACHINE.....                                    | 2   |
| 4  | PFOZZ | 5310011741513 | OBAT5            | 90715-991 | WASHER,FLAT.....                                     | 4   |
| 5  | XDOZZ | 5340013015210 | OBAT5            | 90194-991 | BRACKET,MOUNTING.....                                | 1   |
| 6  | PFOZZ | 5340013015208 | OBAT5            | 93941-991 | BRACKET,MOUNTING.....                                | 1   |
| 7  | PFOZZ | 5340013015211 | OBAT5            | 90195-991 | BRACKET,MOUNTING.....                                | 1   |
| 8  | PFOZZ | 5306012144677 | OBAT5            | 90461-991 | BOLT.....  | 2   |
| 9  | PAOZZ | 2510013091001 | OBAT5            | 91348-991 | BRACKET,ENGINE MOUN.....                             | 2   |
| 10                                       | PFOZZ | 5306011670770 | OBAT5            | 90445-991 | BOLT,MACHINE.....                                    | 9   |
| 11                                       | PAOZZ | 5342013552646 | OBAT5            | 92178-991 | MOUNT,RESILIENT (SHALL BE REPLACED<br>IN PAIRS)..... | 2   |

END OF FIGURE

1  
2 THRU 6



\* Part of Item 1

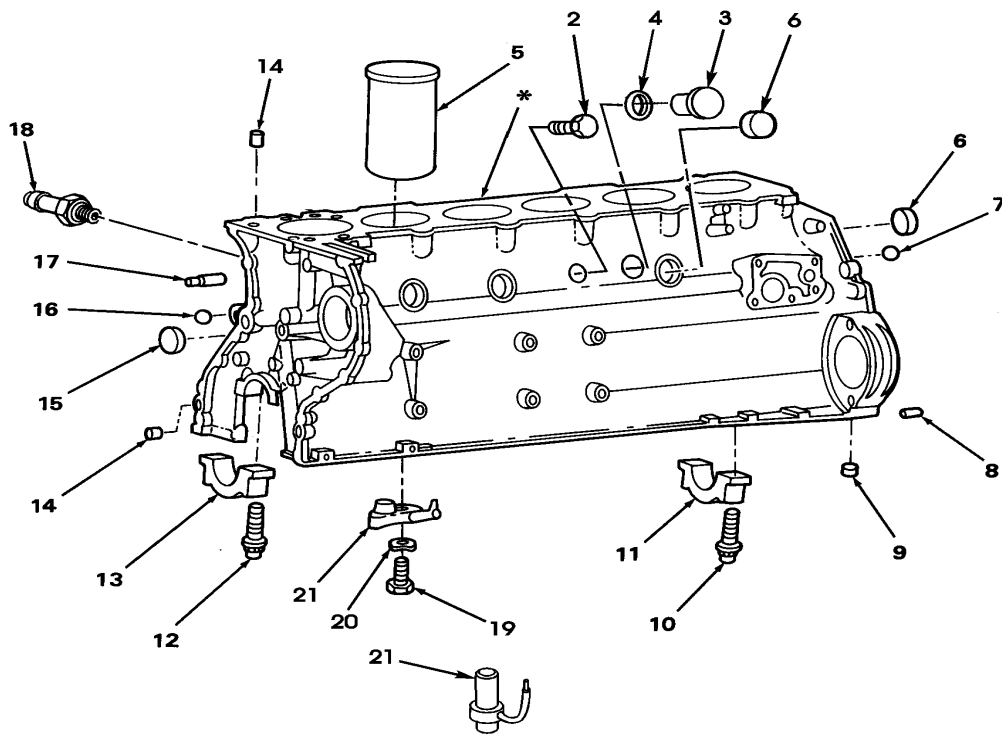
FIGURE 3. CYLINDER HEAD AND COMPONENTS.

| SECTION II |       | TM9-2350-285-24P |       |              |   |     |
|------------|-------|------------------|-------|--------------|---|-----|
| (1)        | (2)   | (3)              | (4)   | (5)          | (6)   | (7) |
| ITEM       | SMR   |                  |       | PART         |   |     |
| NO         | CODE  | NSN              | CAGEC | NUMBER       | DESCRIPTION AND USABLE ON CODES(UOC)                              | QTY |
|            |       |                  |       |              | GROUP 0101 CRANKCASE, BLOCK,<br>CYLINDER HEAD                     |     |
|            |       |                  |       |              | FIG. 3 CYLINDER HEAD AND COMPONENTS                               |     |
| 1          | PAHHH | 2815012937130    | OBAT5 | 94070-991    | CYLINDER HEAD,DIESE WITHOUT VALVES.                               | 1   |
| 2          | PAHZZ | 5330011714703    | OBAT5 | 92550-991    | .SEAL RING,METAL.....   | 1   |
| 3          | PFHZZ | 5365011714694    | D8046 | 000908010004 | .PLUG,MACHINE THREAD.....   | 1   |
| 4          | PPFZZ | 4820011899824    | OBAT5 | 93659-991    | .BALL,VALVE,PORTED 6 MM.....                                      | 6   |
| 4          | XDFZZ |                  | OBAT5 | 95048-991    | .BALL, VALVE, PORTED 7MM.....                                     | 6   |
| 5          | PFHZZ | 3110012435020    | 15526 | 54019        | .BALL,BEARING.....  | 1   |
| 6          | XDHZZ | 5340013014927    | OBAT5 | 94170-991    | .PLUG,EXPANSION.....  | 11  |
| 7          | XDOZZ | 5307013015090    | OBAT5 | 94154-991    | STUD,PLAIN.....   | 12  |
| 8          | PPFZZ | 5310012391342    | 15526 | 137B-8       | WASHER,SPRING TENS.....   | 2   |
| 9          | PPFZZ | 5305013015036    | OBAT5 | 94174-991    | SCREW,MACHINE.....  | 2   |
| 10         | PPFZZ | 5306013032695    | OBAT5 | 93964-991    | BOLT,MACHINE.....   | 2   |
| 11         | PPFZZ | 5325013015066    | OBAT5 | 94106-991    | INSERT,SCREW THREAD FOR ENGINE<br>SERIAL NUMBER UP TO 00609.....  | 6   |
| 11         | XDFZZ |                  | OBAT5 | 95046-991    | INSERT, SCREW THREA FOR ENGINE<br>SERIAL # FROM 000610.....       | 6   |
| 12         | PAFZZ | 2815013022493    | OBAT5 | 95047-991    | CHAMBER,PRECOMBUSTI FOR ENGINE<br>SERIAL NUMBER UP TO 000609..... | 6   |
| 12         | XDFZZ |                  | OBAT5 | 93986-991    | CHAMBER, PRE-COMBUS FOR ENGINE<br>SERIAL # FROM 00610.....        | 6   |
| 13         | XDFZZ |                  | OBAT5 | 95072-991    | SCREW SET, HEAD BOL INCLUDES 3<br>SIZES 80MM, 102MM, 115MM.....   | 26  |
| 14         | PPFZZ | 5365011724630    | OBAT5 | 92438-991    | PLUG,MACHINE THREAD.....  | 3   |
| 15         | PAFZZ | 5325013015054    | OBAT5 | 93973-991    | RING,RETAINING PART OF KIT P/N<br>4538741-301.....                | 4   |
| 16         | PAHZZ | 5330013723028    | OBAT5 | 94051-991    | GASKET PART OF KIT P/N 4538741-301..                              | 1   |

END OF FIGURE



1  
2 THRU 16



\* Part of Item 1

FIGURE 4. ENGINE BLOCK AND COMPONENTS.

| SECTION II                                    |       |               | TM9-2350-285-24P |                          |  |     |
|---|-------|---------------|------------------|--------------------------|--|-----|
| (1)   | (2)   | (3)           | (4)              | (5)                      | (6)  | (7) |
| ITEM  | SMR   |               |                  | PART                     |  |     |
| NO  | CODE  | NSN           | CAGEC            | NUMBER                   | DESCRIPTION AND USABLE ON CODES(UOC)                     | QTY |
| GROUP 0101 CRANKCASE, BLOCK,<br>CYLINDER HEAD |       |               |                  |                          |  |     |
| FIG. 4 ENGINE BLOCK AND COMPONENTS            |       |               |                  |                          |  |     |
| 1   | PAHHH | 2815014313053 | OBAT5            | 95042-991                | ENGINE BLOCK,DIESEL WITH WATER PUMP                      | 1   |
| 2   | PAHZZ | 5365013014930 | OBAT5            | 94117-991                | . PLUG,MACHINE THREAD.....                               | 1   |
| 3   | PAFZZ | 5365013014931 | OBAT5            | 94113-991                | . PLUG,MACHINE THREAD.....                               | 1   |
| 4   | PAFZZ | 5330013015128 | OBAT5            | 94114-991                | . SEAL RING,METAL.....                                   | 1   |
| 5   | PAHZZ | 2815013018422 | OBAT5            | 94112-991                | . CYLINDER SLEEVE.....                                   | 6   |
| 6   | PAFZZ | 5340011747575 | OBAT5            | 93630-991                | . PLUG,EXPANSION.....                                    | 8   |
| 7   | PFHZZ | 3110013013828 | OBAT5            | 94115-991                | . BALL,BEARING.....                                      | 1   |
| 8   | PFFZZ | 5315013014919 | OBAT5            | 94119-991                | . PIN,STRAIGHT,HEADLE.....                               | 2   |
| 9   | PFHZZ | 5315013013893 | OBAT5            | 94120-991                | . PIN,STRAIGHT,HEADLE.....                               | 1   |
| 10  | PFHZZ | 5305013015151 | OBAT5            | 94111-99                 | . SCREW,SHOULDER.....                                    | 12  |
| 11  | PFHZZ | 3130013014014 | OBAT5            | 94108-991                | . HOUSING,BEARING UNI (FOR JOURNAL<br>#5).....           | 1   |
| 12  | PFHZZ | 5305013013995 | OBAT5            | 94110-991                | . SCREW,SHOULDER.....                                    | 2   |
| 13  | PFHZZ | 3130013014015 | OBAT5            | 94109-991                | . HOUSING,BEARING UNI.....                               | 6   |
| 14  | PFHZZ | 5315013014920 | OBAT5            | 94118-991                | . PIN,STRAIGHT,HEADLE.....                               | 4   |
| 15  | XDFZZ | 5340013014928 | OBAT5            | 94116-991                | . PLUG,EXPANSION.....                                    | 1   |
| 16  | PFHZZ | 4820011747695 | OBAT5            | 93645-991                | . BALL,VALVE,PORTED.....                                 | 1   |
| 17  | PFHZZ | 2910013022499 | OBAT5            | 94122-991                | SPRAY TIP,NOZZLE,FU.....                                 | 1   |
| 18  | PFHZZ | 4730013027015 | OBAT5            | 93792-991                | ADAPTER,STRAIGHT,TU.....                                 | 1   |
| 19  | PFHZZ | 5305121420188 | D8286            | DIN933-M6X22-8-8<br>-A2P | SCREW,CAP,HEXAGON H.....                                 | 6   |
| 20  | PFHZZ | 5310011761380 | OBAT5            | 90828-991                | WASHER,SPRING TENS.....                                  | 6   |
| 21  | PFHZZ | 2910013055722 | OBAT5            | 94121-991                | SPRAY TIP,NOZZLE,FU.....                                 | 6   |
| 21  | XDHZZ |               | OBAT5            | 95305-991                | . SPRAY TIP, NOZZLE, FROM ENGINE<br>SERIAL # 004546..... | 6   |

END OF FIGURE