

**GENERAL SUPPORT MAINTENANCE REPAIR PARTS  
AND SPECIAL TOOLS LIST  
(INCLUDING DEPOT MAINTENANCE REPAIR PARTS  
AND SPECIAL TOOLS)**

**FOR  
RADIO SETS**

<b>AN/WRC-119</b>	<b>(NSN 5820-01-151-9915)(HC:L2A)</b>
<b>AN/PRC-119A</b>	<b>(NSN 5820-01-267-9482)(EIC:L2Q)</b>
<b>AN/PRC-87</b>	<b>(NSN 5820-01-151-9916)(EIC:L2T)</b>
<b>AN/PRC-87A</b>	<b>(NSN 5820-01-267-9480)(EIC:L22)</b>
<b>AN/PRC-87C</b>	<b>(NSN 5820-01-304-2045)(EIC:GDC)</b>
<b>AN/VRC-87D</b>	<b>(NSN 5820-01-351-5259)(EIC:N/A)</b>
<b>AN/VRC-88</b>	<b>(NSN 5820-01-151-9917)(EIC:L2U)</b>
<b>AN/VRC-88A</b>	<b>(NSN 5820-01-267-9481)(EIC:L23)</b>
<b>AN/VRC-88C</b>	<b>(NSN 5820-01-304-2044)(EIC:GDD)</b>
<b>AN/VRC-88D</b>	<b>(NSN 5820-01-352-1964)(EIC:N/A)</b>
<b>AN/VRC-89</b>	<b>(NSN 5820-01-151-9918)(EIC:L2V)</b>
<b>AN/VRC-89A</b>	<b>(NSN 5820-01-267-9479)(EIC:L24)</b>
<b>AN/VRC-90</b>	<b>(NSN 5820-01-151-9919)(EIC:L2W)</b>
<b>AN/VRC-90A</b>	<b>(NSN 5820-01-268-5105) (EIC:L25)</b>
<b>AN/VRC-91</b>	<b>(NSN 5820-01-151-9920) (EIC:L2X)</b>
<b>AN/VRC-91A</b>	<b>(NSN 5820-01-267-9478) (EIC:L26)</b>
<b>AN/VRC-92</b>	<b>(NSN 5820-01-151-9921)(EIC:L2Y)</b>
<b>A N D</b>	
<b>AN/VRC-92A</b>	<b>(NSN 5820-01-267-9477) (EIC:L27)</b>

**Approved for public release; distribution is unlimited.**

---

Technical Manual

No. 11-5820-914-40P

HEADQUARTERS  
DEPARTMENT OF THE ARMY  
Washington, DC, 15 March 1994

GENERAL SUPPORT MAINTENANCE  
(Including Depot Repair Parts)  
REPAIR PARTS AND SPECIAL TOOLS LISTS  
FOR  
RADIO SETS

<b>AN/PRC-119</b>	<b>(NSN 5820-01-151-9915)(EIC:L2A)</b>
<b>AN/PRC-119A</b>	<b>(NSN 5820-01-267-9482)(EIC:L2Q)</b>
<b>AN/VRC-87</b>	<b>(NSN 5820-01-151-9916)(EIC:L2T)</b>
<b>AN/VRC-87A</b>	<b>(NSN 5820-01-267-9480)(EIC:L22)</b>
<b>AN/VRC-87C</b>	<b>(NSN 5820-01-304-2045)(EIC:GDC)</b>
<b>AN/VRC-87D</b>	<b>(NSN 5820-01-351-5259)(EIC:N/A)</b>
<b>AN/VRC-88</b>	<b>(NSN 5820-01-151-9917)(EIC:L2U)</b>
<b>AN/VRC-88A</b>	<b>(NSN 5820-01-267-9481)(EIC:L23)</b>
<b>AN/VRC-88C</b>	<b>(NSN 5820-01-304-2044)(EIC:GDD)</b>
<b>AN/VRC-88D</b>	<b>(NSN 5820-01-352-1694)(EIC:N/A)</b>
<b>AN/VRC-89</b>	<b>(NSN 5820-01-151-9918)(EIC:L2V)</b>
<b>AN/VRC-89A</b>	<b>(NSN 5820-01-267-9479)(EIC:L24)</b>
<b>AN/VRC-90</b>	<b>(NSN 5820-01-151-9919)(EIC:L2W)</b>
<b>AN/VRC-90A</b>	<b>(NSN 5820-01-268-5105)(EIC:L25)</b>
<b>AN/VRC-91</b>	<b>(NSN 5820-01-151-9920)(EIC:L2X)</b>
<b>AN/VRC-91A</b>	<b>(NSN 5820-01-267-9478)(EIC:L26)</b>
<b>AN/VRC-92</b>	<b>(NSN 5820-01-151-9921)(EIC:L2Y)</b>

AND

<b>AN/VRC-92A</b>	<b>(NSN 5820-01-267-9477)(EIC:L27)</b>
-------------------	--

Current as of 15 December 1993

**REPORTING ERRORS AND RECOMMENDING IMPROVEMENTS**

You can help improve this manual. If you find any mistakes, or you know of a way to improve the procedures, please let us know. Mail your letter, DA Form 2028 (Recommended Changes to Publications and Blank Forms) or DA Form 2028-2 located in the back of this manual to: Commander, US Army Communications-IElectronics Command and Fort Monmouth, ATTN: AMSEL-LC-LM-LT, Fort Monmouth, New Jersey 07703-5007.

In either case a reply will be furnished direct to you.

\*This manual supersedes TM 11-5820-9 14-40P, 1 September 1992.

TABLE OF CONTENTS

		Page	Illus/ Figure
Section	I.	Introduction . . . . .	1
	II.	Repair Parts List . . . . .	1
Group	00	SINCGARS Family of Radios . . . . .	1-1      1
	01	Radio Set AN/PRC-119A (see group 00 for listing of parts) 0101 Receiver-Transmitter RT-1523(C)/U (see group 26 for listing of parts) or Receiver-Transmitter RT-1523B(C)/U (see group 52 for listing of parts)	
		0102 Manpack Antenna AS-3683/PRC . . . . .	2-1      2
		0103 Battery Box CY-8523A/PRC (see group 20 for listing of parts)	
	02	Radio Set AN/PRC-119 (see group 00 for listing of parts) 0201 Radio Receiver-Transmitter RT-1439/VRC (see group 27 for listing of parts)	
		0202 Manpack Antenna AS-3683/PRC (see group 0102 for listing of parts)	
		0203 Battery Box CY-8523A/PRC (see group 20 for listing of parts)	
		0204 Electrical Special Purpose Cable Assembly . . . . .	3-1      3
	03	Radio Set AN/VRC/87A (see group 00 listing of parts) 0301 Receiver-Transmitter RT-1523(C)/U (see group 26 for listing of parts) or Receiver-Transmitter RT-1523B(C)/U (see group 52 for listing of parts)	
		0302 Vehicular Amplifier-Adapter AM-7239/VRC (see group 29 for listing of parts) or Vehicular Amplifier-Adapter AM-7239B/VRC (see group 51 for listing of parts)	
	04	Radio Set AN/VRC/87C (see group 00 for listing of parts) 0401 Receiver-Transmitter RT-1523(C)/U (see group 26 for listing of parts) or Receiver-Transmitter RT-1523B(C)/U (see group 52 for listing of parts)	
		0402 Power Supply Adapter MX-10862/VRC (see group 25 for listing of parts)	
	05	Radio Set AN/VRC-87 (see group 00 for listing of parts) 0501 Radio Receiver-Transmitter RT-1439/VRC (see group 27 for listing of parts)	
		0502 Vehicular Amplifier-Adapter AM-7239/VRC (see group 29 for listing of parts) or Vehicular Amplifier-Adapter AM-7239B/VRC (see group 51 for listing of parts)	
	06	Radio Set AN/VRC/87D (see group 00 for listing of parts) 0601 Radio Receiver-Transmitter RT-1439/VRC (see group 27 for listing of parts)	
		0602 Power Supply Adapter MX-10862/VRC (see group 25 for listing of parts)	
	07	Radio Set AN/VRC-88A (see group 00 for listing of parts) 0701 Receiver-Transmitter RT-1523(C)/U (see group 26 for listing of parts) or Receiver-Transmitter RT-1523B(C)/U (see group 52 for listing of parts)	
		0702 Vehicular Amplifier-Adapter AM-7239/VRC (see group 29 for listing of parts) or Vehicular Amplifier-Adapter AM-7239B/VRC (see group 51 for listing of parts)	
		0703 Manpack Antenna AS-3683/PRC (see group 0102 for listing of parts)	
		0704 Battery Box CY-8523A/PRC (see group 20 for listing of parts)	
	08	Radio Set AN/VRC/88C (see group 00 for listing of parts) 0801 Receiver-Transmitter RT-1523(C)/U (see group 26 for listing of parts) or Receiver-Transmitter RT-1523B(C)/U (see group 52 for listing of parts)	
		0802 Power Supply Adapter MX-10862/VRC (see group 25 for listing of parts)	

## TABLE OF CONTENTS Continued

		Page	Illus/ Figure
Group 08	0803 Manpack Antenna AS-3683/PRC (see group 0102 for listing of parts)		
	0804 Battery Box CY-8523A/PRC (see group 20 for listing of parts)		
09	Radio Set AN/VRC-88 (see group 00 for listing of parts)		
	0901 Radio Receiver-Transmitter RT-1439/VRC (see group 27 for listing of parts)		
	0902 Vehicular Amplifier-Adapter AM-7239JRC (see group 29 for listing of parts) or Vehicular Amplifier-Adapter AM-7239B/VRC (see group 51 for listing of parts)		
	0903 Manpack Antenna AS-3683/PRC (see group 0102 for listing of parts)		
	0904 Battery Box CY-8523A/PRC (see group 20 for listing of parts)		
	0905 Electrical Special Purpose Cable Assembly (see group 0204 for listing of parts)		
10	Radio Set AN/VRC/88D (see group 00 for listing of parts)		
	1001 Radio Receiver-Transmitter RT-1439/VRC (see group 27 for listing of parts)		
	1002 Power Supply Adapter MX-10862/VRC (see group 25 for listing of parts)		
	1003 Manpack Antenna AS-3683/PRC (see group 0102 for listing of parts)		
	1004 Battery Box CY-8523A/PRC (see group 20 for listing of parts)		
	1005 Electrical Special Purpose Cable Assembly (see group 0204 for listing of parts)		
11	Radio Set AN/VRC-89A (see group 00 for listing of parts)		
	1101 Receiver-Transmitter RT-1523(C)/U (see group 26 for listing of parts) or Receiver-Transmitter RT-1523B(C)/U (see group 52 for listing of parts)		
	1102 Vehicular Amplifier-Adapter AM-7239/VRC (see group 29 for listing of parts) or Vehicular Amplifier-Adapter AM-7239B/VRC (see group 51 for listing of parts)		
	1103 Radio Frequency Amplifier AM-7238/VRC (see group 30 for listing of parts)		
12	Radio Set AN/VRC-89 (see group 00 for listing of parts)		
	1201 Radio Receiver-Transmitter RT-1439/VRC (see group 27 for listing of parts)		
	1202 Vehicular Amplifier-Adapter AM-7239/VRC (see group 29 for listing of parts) or Vehicular Amplifier-Adapter AM-7239BWRC (see group 51 for listing of parts)		
	1203 Radio Frequency Amplifier AM-7238/VRC (see group 30 for listing of parts)		
13	Radio Set AN/VRC-90A (see group 00 for listing of parts)		
	1301 Receiver-Transmitter RT-1523(C)/U (see group 26 for listing of parts) or Receiver-Transmitter RT-1523B(C)/U (see group 52 for listing of parts)		
	1302 Vehicular Amplifier-Adapter AM-7239/VRC (see group 29 for listing of parts) or Vehicular Amplifier-Adapter AM-7239BWRC (see group 51 for listing of parts)		
	1303 Radio Frequency Amplifier AM-7238/VRC (see group 30 for listing of parts)		
14	Radio Set AN/VRC-90 (see group 00 for listing of parts)		
	1401 Radio Receiver-Transmitter RT-1439/VRC (see group 27 for listing of parts)		
	1402 Vehicular Amplifier-Adapter AM-7239/VRC (see group 29 for listing of parts) or Vehicular Amplifier-Adapter AM-7239B/VRC (see group 51 for listing of parts)		

TABLE OF CONTENTS Continued

Illus/  
Page Figure

Group 14	1403 Radio Frequency Amplifier AM-7238/VRC (see group 30 for listing of parts)		
15	Radio Set AN/VRC-91A (see group 00 for listing of parts)		
	1501 Receiver-Transmitter RT-1523(C)/U (see group 26 for listing of parts) or Receiver-Transmitter RT-1523B(C)/U (see group 52 for listing of parts)		
	1502 Vehicular Amplifier-Adapter AM-7239WRC (see group 29 for listing of parts) or Vehicular Amplifier-Adapter AM-7239B/VRC (see group 51 for listing of parts)		
	1503 Radio Frequency Amplifier AM-7238/VRC (see group 30 for listing of parts)		
	1504 Manpack Antenna AS-3683/PRC (see group 0201 for listing of parts)		
	1505 Battery Box CY-8523A/PRC (see group 20 for listing of parts)		
16	Radio Set AN/VRC-91 (see group 00 for listing of parts)		
	1601 Radio Receiver-Transmitter RT-1439/VRC (see group 27 for listing of parts)		
	1602 Vehicular Amplifier-Adapter AM-7239/VRC (see group 29 for listing of parts) or Vehicular Amplifier-Adapter AM-7239B/VRC (see group 51 for listing of parts)		
	1603 Radio Frequency Amplifier AM-7238/VRC (see group 30 for listing of parts)		
	1604 Manpack Antenna AS-3683/PRC (see group 0202 for listing of parts)		
	1605 Battery Box CY-8523A/PRC (see group 20 for listing of parts)		
	1606 Electrical Special Purpose Cable Assembly (see group 0204 for listing of parts)		
17	Radio Set AN/VRC-92A (see group 00 for listing of parts)		
	1701 Receiver-Transmitter RT-1523(C)/U (see group 26 for listing of parts) or Receiver-Transmitter RT-1523B(C)/U (see group 52 for listing of parts)		
	1702 Vehicular Amplifier-Adapter AM-7239/VRC (see group 29 for listing of parts) or Vehicular Amplifier-Adapter AM-7239B/VRC (see group 51 for listing of parts)		
	1703 Radio Frequency Amplifier AM-7238/VRC (see group 30 for listing of parts)		
	1704 Electronic Equipment Auxiliary Kit MK-2312/VRC (see group 37 for listing of parts)		
18	Radio Set AN/VRC-92 (see group 00 for listing of parts)		
	1801 Radio Receiver-Transmitter RT-1439/VRC (see group 27 for listing of parts)		
	1802 Vehicular Amplifier-Adapter AM-7239/VRC (see group 29 for listing of parts) or Vehicular Amplifier-Adapter AM-7239B/VRC (see group 51 for listing of parts)		
	1803 Radio Frequency Amplifier AM-7238/VRC (see group 30 for listing of parts)		
	1804 Electronic Equipment Auxiliary Kit MK-2312/VRC (see group 37 for listing of parts)		
19	Control - Monitor C-11291 VRC . . . . .	4-1	4
	1901 Electrical Equipment Chassis - Control - Monitor . . . . .	5-1	5
	190101 Control - Monitor Case . . . . .	6-1	6
	19010101 Backplane Assembly – Control - Monitor . . . . .	7-1	
	190102 Control - Monitor Panel . . . . .	8-1	
	19010201 Circuit Card Assembly - Control - Monitor Display . . . . .	9-1	9
	1904 Circuit Card Assembly – Decoder/Timer . . . . .	10-1	10
	1905 Circuit Card Assembly – Microcontroller . . . . .	11-1	11

TABLE OF CONTENTS Continued

		Page	Illus/ Figure
Group 20	Battery Box CY-8523A/PRC . . . . .	12-1	12
22	Battery Tray CY-8664W/VRC . . . . .	13-1	13
	2201 Electronic Components Assembly - Battery Tray . . . . .	14-1	14
	220101 Battery Electrical Chassis - Battery Tray . . . . .	15-1	15
23	Electronic Counter - Countermeasures Fill Device MX-18290/VRC . . . . .	16-1	16
24	Electronic Counter - Countermeasures Fill Device MX-10579/VRC . . . . .	17-1	17
25	power Supply Adapter MX-10862/VRC . . . . .	18-1	18
	2501 Electrical Equipment Chassis - Power Supply Adapter . . . . .	19-1	19
	250101 Electrical Equipment Chassis Assembly . . . . .	20-1	20
	2502 Power Supply Subassembly . . . . .	21-1	21
	250201 Circuit Card Assembly - Transient Protection/Regulator . . . . .	22-1	22
	250202 Circuit Card Assembly - Transient Protection/Regulator Filter . . . . .	23-1	23
26	Radio Receiver - Transmitter RT-1523(C)/U . . . . .	24-1	24
	2601 Impedance Matching Network . . . . .	25-1	25
	260101 Circuit Card Assembly - Antenna Decoder . . . . .	26-1	26
	260102 Circuit Card Assembly - 3 - Band Antenna Matching . . . . .	27-1	27
	2604 Electronic Components Assembly - Control. . . . .	28-1	28
	260401 Circuit Card Assembly - Microprocessor/Memory . . . . .	29-1	29
	260402 Circuit Card Assembly - control Input/Output . . . . .	30-1	30
	2605 Electronic Counter - Countermeasures Control . . . . .	31-1	31
	260501 Electronic Components Assembly - Electronic Counter - Countermeasures . . . . .	32-1	32
	26050101 Circuit Card Assembly - Memory . . . . .	33-1	33
	26050102 Circuit Card Assembly - Interleaver . . . . .	34-1	34
	2606 Circuit Card Assembly - Two Wire Interface . . . . .	35-1	35
	2607 Circuit Card Assembly - Switching . . . . .	36-1	36
	2608 Intermediate Frequency/Demodulator Assembly . . . . .	37-1	37
	260801 Circuit Card Assembly - Intermediate Frequency/Demodulator . . . . .	38-1	38
	2609 Tuner/Mixer Assembly . . . . .	39-1	39
	260901 Circuit Card Assembly - Tuner/Mixer . . . . .	40-1	40
	2610 Electrical Frequency Synthesizer . . . . .	41-1	41
	261001 Circuit Card Assembly - Dual Mode Phase Locked Loop Filter . . . . .	42-1	42
	261002 Circuit Card Assembly - Low Level Voltage Controlled Oscillator . . . . .	43-1	43
	2611 Exciter/power Amplifier Assembly . . . . .	44-1	44
	261101 Circuit Card Assembly - Power Amplifier . . . . .	45-1	45
	261102 Circuit Card Assembly - Filter and Automatic Level Control . . . . .	46-1	46
	261103 Circuit Card Assembly - Modulator . . . . .	47-1	47
	2615 Electronic Component Assembly - Fill Routing . . . . .	48-1	48
	261501 Circuit Card Assembly - Fill Routing Input/Output . . . . .	49-1	49
	261502 Circuit Card Assembly - Fill Routing Control . . . . .	50-1	50
	2616 Receiver -Transmitter Subassembly . . . . .	51-1	51
	261601 Receiver -Transmitter Panel Assembly . . . . .	52-1	52
	26160101 Circuit Card Assembly- Display . . . . .	53-1	53
	261602 Electrical Equipment Chassis Assembly . . . . .	54-1	54
	26160201 Backplane Assembly - Electrical Equipment Chassis . . . . .	55-1	55
	26160202 Electrical Equipment Chassis . . . . .	56-1	56
27	Radio Receiver - Transmitter RT-1439/VRC . . . . .	57-1	57
	2701 Impedance Matching Network (see group 2601 for listing of parts)		
	270101 Circuit Card Assembly- Antenna Decoder (see group 260101 for listing of parts)		
	270102 Circuit Card Assembly - 3-Band Antenna Matching (see group 260102 for listing of parts)		
	2702 Circuit Card Assembly- Remote Input/Output . . . . .	58-1	58

TABLE OF CONTENTS Continued

	Page	Illus/ Figure
Group 27	2703 Power Supply . . . . .	59-1 59
	270301 Circuit Card Assembly - Power Supply Filter . . . . .	60-1 60
	270302 Circuit Card Assembly - Power supply switching . . . . .	61-1 61
	270303 Circuit Card Assembly - Power Supply Regulator . . . . .	62-1 62
	2704 Electronic Components Assembly - Control. . . . .	63-1 63
	270401 Circuit Card Assembly - Microprocessor/Memory . . . . .	64-1 64
	270402 Circuit Card Assembly - Control Input/Output . . . . .	65-1 65
	2705 Electronic Counter - Countermeasures Control . . . . .	66-1 66
	270501 Electronic Components Assembly - Electronic Counter-Countermeasures . . . . .	67-1 67
	27050101 Circuit Card Assembly- Memory . . . . .	68-1 68
	27050102 Circuit Card Assembly- Interleave . . . . .	69-1 69
	2706 Circuit Card Assembly - Two Wire Interface (see group 2606 for listing of parts)	
	2707 Circuit Card Assembly-switching . . . . .	70-1 70
	2708 Intermediate Frequency/Demodulator Assembly (see group 2608 for listing of parts)	
	270801 Circuit Card Assembly - Intermediate Frequency/Demodulator (see group 260801 for listing of parts)	
	2709 Tuner/Mixer (see group 2609 for listing of parts)	
	270901 Circuit Card Assembly - Tuner/Mixer (see group 260901 for listing of parts)	
	2710 Electrical Frequency Synthesizer (see group 2610 for listing of parts)	
	271001 Circuit Card Assembly - Dual Mode Phase Locked Loop Filter (see group 261001 for listing of parts)	
	271002 Circuit Card Assembly - Low Level Voltage Controlled Oscillator (see group 261002 for listing of parts)	
	2711 Exciter/power Amplifier Assembly (see group 2611 for listing of parts)	
	271101 Circuit Card Assembly - Power Amplifier (see group 261101 for listing of parts)	
	271102 Circuit Card Assembly - Filter and Automatic Level Control (see group 261102 for listing of parts)	
	271103 Circuit Card Assembly - Modulator (see group 261103 for listing of parts)	
	2712 Circuit Card Assembly - Audio power Supply . . . . .	71-1 71
	2713 Circuit Card Assembly - Audio Control . . . . .	72-1 72
	2714 Circuit Card Assembly - Audio Data Input/Output . . . . .	73-1 73
	2716 Electrical Equipment Chassis - Receiver - Transmitter Subassembly . . . . .	74-1 74
	271601 Receiver - Transmitter Panel Assembly . . . . .	75-1 75
	27160101 Circuit Card Assembly - Display . . . . .	76-1 76
	271602 Electrical Chassis . . . . .	77-1 77
	27160201 Backplane Assembly - Electrical Equipment Chassis . . . . .	78-1 78
	27160202 Electrical Equipment Chassis Assembly . . . . .	79-1 79
28	Receiver- Transmitter Control C-11561(C)/U. . . . .	80-1 80
	2802 Control Assembly . . . . .	81-1 81
	280201 Circuit Card Assembly - Control processing Unit . . . . .	82-1 82
	280202 Circuit Card Assembly - Interface . . . . .	83-1 83
	2803 Circuit Card Assembly - Two Wire Interface (see group 2606 for listing of parts)	
	2810 Electronic Components Assembly - Fill Routing (see group 2615 for listing of parts)	
	281001 Circuit Card Assembly - Filling Routing Input/Output (see group 261501 for listing of parts)	

TABLE OF CONTENTS Continued

		Page	Illus/ Figure
Group 28	281002 Circuit Card Assembly - Fill Routing Control (see group 261502 for listing of parts)		
	2813 Receiver - Transmitter Control Subassembly . . . . .	84-1	84
	281301 Receiver - Transmitter Control Panel Assembly . . . . .	85-1	85
	28130101 Circuit Card Assembly - Display (see group 26160101 for listing of parts)		
29	Vehicular Amplifier – Adapter AM-7239/VRC . . . . .	86-1	86
	2901 Electrical Equipment Chassis - Amplifier-Adapter Assembly . . . . .	87-1	87
	290101 Electronic Components Assembly - Power Control . . . . .	88-1	88
	29010101 Terminal Board Assembly (see group 290101 for listing of parts)		
	29010102 Electronics Case . . . . .	89-1	89
	290102 Electronic Components Assembly - One Watt Audio Amplifier . . . . .	90-1	90
	29010201 Branched Wiring Harness - One Watt Audio Amplifier W1 . . . . .	91-1	91
	29010202 One Watt Audio Amplifier Case . . . . .	92-1	92
	290103 Branched Electrical Special Purpose Cable Assembly - W3 . . . . .	93-1	93
	290104 Wiring Harness - W2 . . . . .	94-1	94
	2902 Vehicular Adapter Power Supply . . . . .	95-1	95
	290201 Circuit Card Assembly - Transient Protection/Regulator Filter (see group 250202 for listing of parts)		
	290202 Circuit Card Assembly - Transient Protection/Regulator (see group 250201 for listing of parts)		
	290203 Electrical Heat Sink . . . . .	96-1	96
	2903 Circuit Card Assembly - One Watt Audio Amplifier . . . . .	97-1	97
30	Radio Frequency Amplifier AM-7238/VRC . . . . .	98-1	98
	3001 Electrical Radio Frequency Heat Sink . . . . .	99-1	99
	300101 Circuit Card Assembly - Radio Frequency Amplifier . . . . .	100-1	100
	3002 Radio Frequency Housing Assembly . . . . .	101-1	101
	300201 Circuit Card Assembly - Input Filter/Switch . . . . .	102-1	102
	300202 Circuit Card Assembly - Output Filter/Switch . . . . .	103-1	103
	300203 Branched Wiring Harness - Radio Frequency Amplifier . . . . .	104-1	104
31	Manpack Antenna AS-4266/PRC . . . . .	104A-1	104A
32	Vehicular Antenna AS-3684/VRC . . . . .	105-1	105
	3201 Antenna Subassembly . . . . .	106-1	106
33	Vehicular Antenna AS-3900/VRC . . . . .	107-1	107
	3301 Antenna Subassembly . . . . .	108-1	108
35	Electrical Equipment Mounting Base MT-6352/VRC . . . . .	109-1	109
	3501 Electrical Connector Assembly . . . . .	110-1	110
36	Electrical Equipment Mounting Base MT-6576/VRC . . . . .	111-1	111
	3601 Electrical Connector Assembly (see group 3501 for listing of parts)		
37	Electronic Equipment Auxiliary Kit MK-2312/VRC . . . . .	112-1	112
	3701 Electrical Equipment Mounting Base MT-6353/VRC . . . . .	113-1	113
	370101 Chassis/Power Supply Assembly . . . . .	114-1	114
	37010101 Power Supply . . . . .	115-1	115
	3701010101 Circuit Card Assembly - Transient Protection/Regulator Filter (see group 250201 for listing of parts)		
	3701010102 Circuit Card Assembly - Transient Protection/Regulator (see group 250202 for listing of parts)		
	37010102 Electrical Equipment Chassis . . . . .	116-1	116
	3701010201 Power Supply Case . . . . .	117-1	117
	370102 Electrical Equipment Mounting Base . . . . .	118-1	118
38	Electronic Equipment Auxiliary Kit MK-2499/VRC (see TM 11-5820-957-23P for listing of parts)		
39	Control Unit - Loudspeaker LS-671/VRC , . . . . .	119-1	119
	Special tools (repair parts)		

TABLE OF CONTENTS Continued

		Page	Illus/ Figure
Group 40	4001 Interconnecting Device J-4501/GRC . . . . .	120-1	120
	400101 Electrical Special Purpose Cable Assembly - Radio Frequency Power Amplifier Adapter . . . . .	121-1	121
	400102 Tool and Equipment Kit Chest . . . . .	122-1	122
	400104 Test Adapter . . . . .	123-1	123
	400106 Electrical Special Purpose Cable Assembly - Control-Monitor . . . . .	124-1	124
	400107 Electrical Special Purpose Cable Assembly . . . . .	125-1	125
	400108 Static Control Tablerunner . . . . .	126-1	126
	400109 Branched Wiring Harness - Receiver- Transmitter . . . . .	127-1	127
	400110 Branched Wiring Harness - Amplifier - Adapter . . . . .	128-1	128
	400111 Branched Wiring Harness - Control - Monitor . . . . .	129-1	129
	400112 Branched Wiring Harness - Radio Frequency Power Amplifier . . . . .	130-1	130
	400113 Branched Wiring Harness - Auxiliary RFPA Mount . . . . .	131-1	131
	400114 Branched Wiring Harness - Amplifier - Adapter . . . . .	132-1	132
	400115 Branched Wiring Harness - Battery Box . . . . .	133-1	133
	400116 Electrical Special Purpose Cable Assembly . . . . .	134-1	134
	400117 Branched Wiring Harness - Power Supply Adapter . . . . .	135-1	135
	400118 Branched Wiring Harness - Battery Tray. . . . .	136-1	136
	400119 Branched Wiring Harness-Control Unit Loudspeaker . . . . .	137-1	137
	400120 Branched Wiring Harness - SRCU . . . . .	138-1	138
	4002 Electrical Equipment Mounting Base MT-6352/VRC (see group 35 for listing of parts)		
	4003 Radio Receiver -Transmitter RT-1439/VRC (see group 27 for listing of parts)		
	4004 Vehicular Amplifier - Adapter AM-7239/VRC (see group 29 for listing of parts) or Vehicular Amplifier- Adapter AM-7239B/VRC (see group 51 for listing of parts)		
	4005 Electronic Counter - Countermeasures Fill Device MX-10579/VRC (see group 24 for listing of parts)		
44	4401 Radio Receiver - Transmitter RT-1439/VRC System Connector Alignment Tool . . . . .	139-1	139
45	4501 Vehicular Amplifier - Adapter AM-7239/VRC J7 and J8 Connector Alignment Tool . . . . .	140-1	140
	4502 Vehicular Amplifier - Adapter AM-7239/VRC J1 Connector Alignment Tool . . . . .	141-1	141
46	4601 Radio Frequency Amplifier AM-7238/VRC P1 Connector Alignment Tool . . . . .	142-1	142
48	4801 Electrical Equipment Mounting Base MT-6353/VRCJ4 Connector Alignment Tool . . . . .	143-1	143
49	4901 Interconnecting Device J-4501/GRC (see group 4001 for listing of parts)		
	490101 Electrical Special Purpose Cable Assembly- Radio Frequency Power Amplifier Adapter (see group 400101 for listing of parts)		
	490102 Tool and Equipment Kit Chest (see group 400102 for listing of parts)		
	490104 Test Adapter (see group 400104 for listing of parts)		
	490106 Electrical Special Purpose Cable Assembly - Control Monitor (see group 400106 for listing of parts)		
	490107 Electrical Special Purpose Cable Assembly (see group 400107 for listing of parts)		
	490108 Static Control Tablerunner (see group 400108 for listing of parts)		
	490109 Branched Wiring Harness - Amplifier-Adapter (see group 400109 for listing of parts)		
	490110 Branched Wiring Harness - Amplifier-Adapter (see group 400110 for listing of parts)		

TABLE OF CONTENTS Continued

		Illus/ Page Figure
Group 49	490111 Branched Wiring Harness - Control-Monitor (see group 400111 for listing of parts)	
	490112 Branched Wiring Harness - Radio Frequency Power Amplifier (see group 400112 for listing of parts)	
	490113 Branched Wiring Harness - Auxiliary RFPA Mount (see group 400113 for listing of parts)	
	490114 Branched Wiring Harness - Amplifier-Adapter (see group 400114 for listing of parts)	
	490115 Branched Wiring Harness - Battery Box (see group 400115 for listing of parts)	
	490116 Electrical Special Purpose Cable Assembly (see group 400116 for listing of parts)	
	490117 Branched Wiring Harness - Power Supply Adapter (see group 400117 for listing of parts)	
	490118 Branched Wiring Harness - Battery Tray (see group 400118 for listing of parts)	
	490119 Branched Wiring Harness - Control Unit Loudspeaker (see group 400119 for listing of parts)	
	490120 Branched Wiring Harness - SRCU (see group 400120 for listing of parts)	
	4902 Electrical Equipment Mounting Base MT-6352/VRC (see group 35 for listing of parts)	
	4903 Radio Receiver - Transmitter RT-1439/VRC (see group 27 for listing of parts)	
	4904 Vehicular Amplifier - Adapter AM-7239/VRC (see group 29 for listing of parts) or Vehicular Amplifier - Adapter AM-7239B/VRC (see group 51 for listing of parts)	
	4905 Electronic Counter - Countermeasures Fill Device MX-10579/VRC (see group 24 for listing of parts)	
51	Vehicular Amplifier-Adapter AM-7239B/VRC . . . . .	144-1 144
	5101 Vehicular Adapter-Power Supply . . . . .	145-1 145
	510101 Circuit Card Assembly - Transient Protection/Regulator (see group 250202 for listing of parts)	
	510102 Circuit Card Assembly - Transient Protection/Regulator Filter (see group 250201 for listing of parts)	
	5102 Circuit Card Assembly - One Watt Audio Amplifier (see group 2903 for listing of parts)	
	5103 Electrical Equipment Chassis - Amplifier - Adapter . . . . .	146-1 146
	510301 Electrical Chassis - Electronic Component - Adapter /Power Supply . . . . .	147-1 147
	51030101 Electrical Heatsink - Electronic Component - Power Supply .	148-1 148
	51030102 Electrical Cover - Electronic Component - Power Supply . . .	149-1 149
	51030103 Branched Electrical Special Purpose Cable Assembly . . . . .	150-1 150
	510302 Electronic Components Assembly - One Watt Audio Amplifier .	151-1 151
	51030201 Branched Wiring Harness - One Watt Audio Amplifier (see group 29010201 for listing of parts)	
	51030202 Electronic Communications Equipment Case-One Watt Audio Amplifier . . . . .	152-1 152
	510303 Electrical Components Assembly-Power Control . . . . .	153-1 153
	51030301 Power Control Case . . . . .	154-1 154
52	Radio Receiver - Transmitter RT-1523B(C)/U . . . . .	155-1 155
	5201 Impedance Matching Network (see group 2601 for listing of parts)	
	520101 Circuit Card Assembly - Antenna Decoder (see group 260101 for listing of parts)	

TABLE OF CONTENTS Continued

		Page	Illus/ Figure
Group 52	520102 Circuit Card Assembly - 3-Band Antenna Matching (see group 260102 for listing of parts)		
	5203 Electronic Counter - Countermeasures Control Assembly . . . . .	156-1	156
	520301 Circuit Card Assembly - Electronic Counter - Countermeasures/ Data . . . . .	157-1	157
	520302 Circuit Card Assembly - Electronic Counter - Countermeasures/ Microprocessor . . . . .	158-1	158
	520303 Circuit Card Assembly - Electronic Counter - Countermeasures/ Interface . . . . .	159-1	159
	5204 Circuit Card Assembly - Two Wire Interface (see group 2606 for listing of parts)		
	5205 Intermediate Frequency/Demodulator Assembly (see group 2608 for listing of parts)		
	520501 Circuit Card Assembly - Intermediate Frequency/Demodulator (see group 260801 for listing of parts)		
	5206 Tuner/Mixer (see group 2609 for listing of parts)		
	520601 Circuit Card Assembly - Tuner/Mixer (see group 260901 for listing of parts)		
	5207 Electrical Frequency Synthesizer . . . . .	160-1	160
	520701 Circuit Card Assembly - DualModePhaseLocked Loop Filter .	161-1	161
	520702 Circuit Card Assembly - Low Level Voltage Controlled Oscillator . . . . .	162-1	162
	5208 Exciter/Power Amplifier Assembly . . . . .	163-1	163
	520801 Circuit Card Assembly - Power Amplifier . . . . .	164-1	164
	520802 Circuit Card Assembly - Automatic Level Control . . . . .	165-1	165
	520803 Circuit Card Assembly - Modulator . . . . .	166-1	166
	5212 Receiver- Transmitter Subassembly (see group 2616 for listing of parts)		
	521201 Receiver- TransmitterPanel Assembly (see group 261601 for listing of parts)		
	52120101 Circuit Card Assembly- Display (see group 26160101 for listing of parts)		
	521202 Electrical Equipment Chassis Assembly (see group 261602 for listing of parts)		
	52120201 Backplane Assembly - Electrical Equipment Chassis (see group 26160201 for listing of parts)		
	52120202 Electrical Equipment Chassis (see group 26160202 for listing of parts)		
95	Interconnecting Group ON-373/GRC . . . . .	167-1	167
	9501 Electrical Communications Equipment Case . . . . .	168-1	168
	950101 Equipment Case . . . . .	169-1	169
	950102 Equipment Cover . . . . .	170-1	170
	9502 Power Supply . . . . .	171-1	171
	950201 Chassis/Power Supply Assembly (see group 370101 for listing of parts)		
	95020101 Power Supply Assembly (see group 37010101 for listing of parts)		
	9502010101 Circuit Card Assembly - Transient Protection/Regulator Filter (see group 250201 for listing of parts)		
	9502010102 Circuit Card Assembly - Transient Protection/Regulator (see group 250202 for listing of parts)		
	95020102 Electrical Equipment Chassis (see group 37010102 for listing of parts)		
	9502010201 Power Supply Case (see group 3701010201 for listing of parts)		

TABLE OF CONTENTS Continued

	Page	Illus/ Figure
Group 95		
9503 Electrical Wiring Harness - Radio Frequency Power Amplifier Adapter . . . . .	171A-1	171A
9504 Electrical Wiring Harness - Fill Device . . . . .	171B-1	171B
9505 Branched Wiring Harness - Receiver-Transmitter. . . . .	171C-1	171C
9506 Branched wiring Harness - Control Monitor . . . . .	171D-1	171D
9507 Branched Wiring Harness - Electrical Power . . . . .	171E-1	171E
9510 Static Control Tablerunner (see group 400108 for listing of parts)		
9511 Branched Wiring Harness - Amplifier-Adapter . . . . .	171F-1	171F
9512 Electrical Wiring Harness - Power Supply . . . . .	171G-1	171G
9513 Branched Wiring Harness - Auxiliary RFPA Mount . . . . .	171H-1	171H
9514 Branched Wiring Harness - Power Supply Adapter . . . . .	171J-1	171J
9515 Branched Wiring Harness - Battery Box . . . . .	171K-1	171K
9516 Branched Wiring Harness - Battery Tray . . . . .	171L-1	171L
9517 Branched Wiring Harness - Control Unit Loudspeaker . . . . .	171M-1	171M
9518 Branched wiring Harness - Remote Control Unit . . . . .	171N-1	171N
9519 Branched Wiring Harness - Splitter Cabie . . . . .	171P-1	171P
9520 Test Adapter . . . . .	171Q-1	171Q
952001 Electronic Components Assembly - Test Adapter . . . . .	171R-1	171R
Section III.		
SPECIAL TOOLS LIST		
SINCGARS Maintenance Group Sets . . . . .	172-1	172
Maintenance Group OA-9297/GRC . . . . .	173-1	173
Interconnecting Device J-4501/GRC . . . . .	174-1	174
Electronic Equipment Tool Kit . . . . .	175-1	175
Electronic Equipment Parts Kit . . . . .	176-1	176
Alignment Tool Case-Radio Receiver -Transmitter RT-1439/VRC . . . . .	177-1	177
Alignment Tool Case - Vehicular Amplifier Adapter AM-7239/VRC . . . . .	178-1	178
Alignment Tool Case - Radio Frequency Amplifier AM-7238/VRC . . . . .	179-1	179
Alignment Tool Case - Circuit Card Assemblies . . . . .	180-1	180
Alignment Tool Case - Electrical Equipment Mounting Base MT-6353/VRC . . . . .	181-1	181
Maintenance Group OA-9263A/GRC . . . . .	182-1	182
Interconnecting Device J-4501/GRC . . . . .	174-1	174
Electronic Equipment Tool Kit . . . . .	175-1	175
Electronic Equipment Parts Kit . . . . .	176-1	176
Interconnecting Group ON-373/GRC . . . . .	183-1	183
Electronic Equipment Parts Kit . . . . .	184-1	184
Electronic Equipment Tool Kit . . . . .	176-1	176
Electronic Equipment Tool Kit . . . . .	185-1	185
Section IV.		
Cross-Reference Indexes		
National Stock Number Index . . . . .	I-1	
Part Number Index . . . . .	I-41	
Figure and item Number Index . . . . .	I-140	

## SECTION I INTRODUCTION

---

### 1. Scope

This RPSTL lists and authorizes spares and repair parts; special tools; special test, measurement, and diagnostic equipment (TMDE); and other special support equipment required for performance of unit, direct support, and general support (including depot repair parts) maintenance of the AN/PRC-119, AN/PRC-119A, AN/VRC-87, AN/VRC-87A, AN/VRC-87C, AN/VRC-87D, AN/VRC-88, AN/VRC-88A, AN/VRC-88C, AN/VRC-88D, AN/VRC-89, AN/VRC-89A, AN/VRC-90, AN/VRC-90A, AN/VRC-91, AN/VRC-91A, AN/VRC-92 and AN/VRC-92A. It authorizes the requisitioning, issue, and disposition of spares, repair parts and special tools as indicated by the source, maintenance and recoverability (SMR) codes.

### 2. General

This Repair Parts and Special Tools List is divided into the following sections:

*a. Section II. Repair Parts List.* A list of spares and repair parts authorized by this RPSTL for use in the performance of maintenance. This list also includes parts which must be removed for replacement of the authorized parts. Parts lists are composed of functional groups in ascending item number sequence, with the parts in each group listed in ascending item number sequence. Figure numbers are listed directly beneath the group header. Bulk materials are listed in item name sequence. Repair part kits are listed separately in their own functional group within Section II. Repair parts for reparable special tools are also listed in this section. Items listed are shown on the associated illustration.

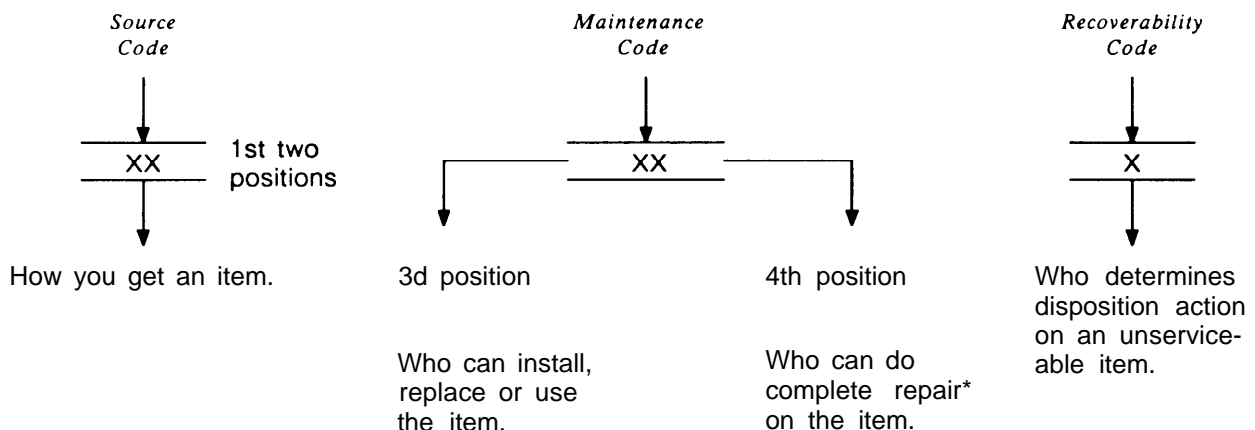
*b. Section III. Special Tools List.* A list of special tools, special TMDE, and other special support equipment authorized by this RPSTL as indicated by Basis of Issue (BOI) information in (column (5)) for the performance of maintenance.

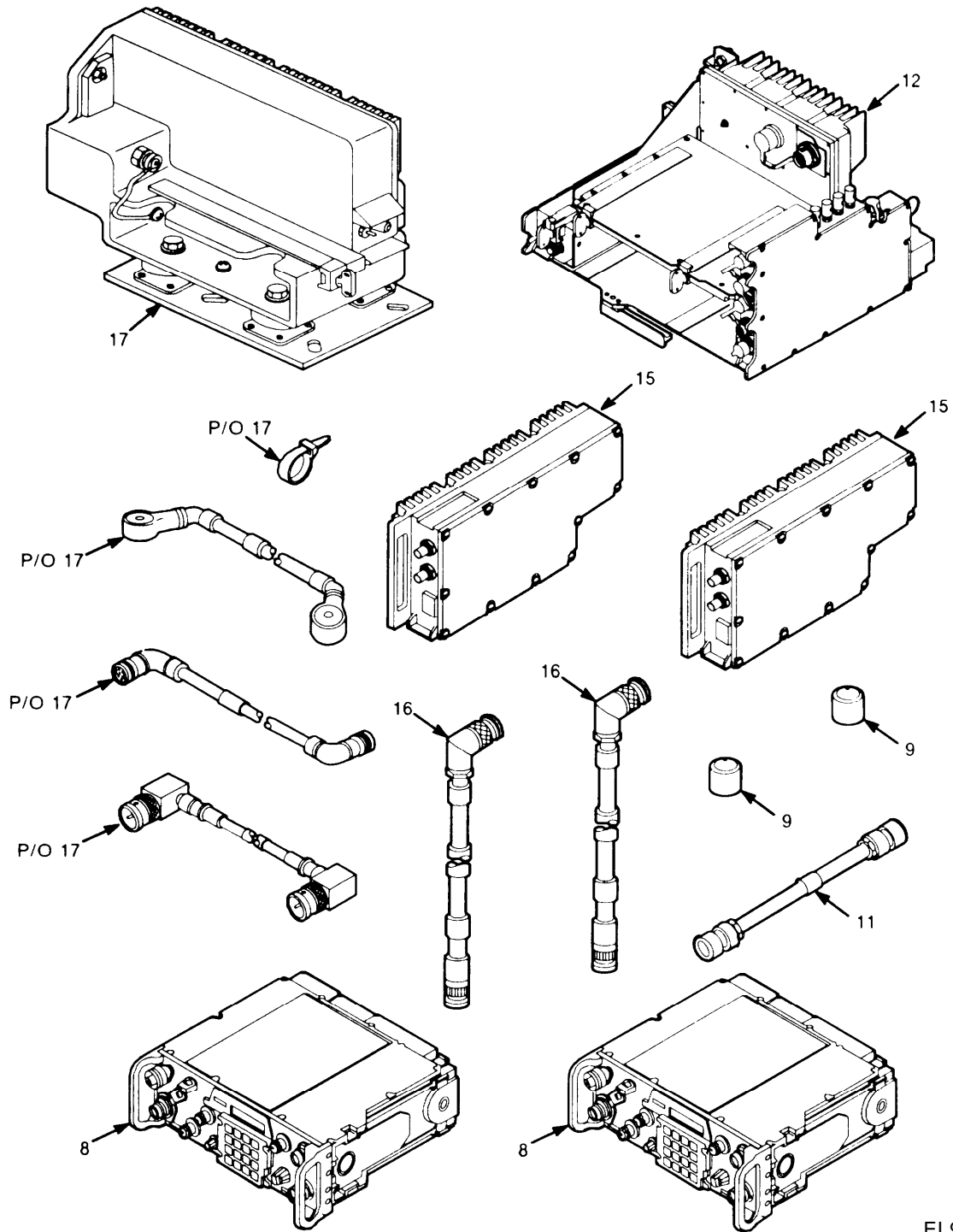
*c. Section IV. Cross-Reference Indexes.* A list, in National item identification number (NIIN) sequence, of all National stock numbered items appearing in the listing, followed by a list in alphameric sequence of all part numbers appearing in the listings. National stock numbers and part numbers are cross-referenced to each illustration figure and item number appearance. The figure number and item number index lists figure and item numbers in numeric sequence and cross-references National stock number, Commercial and Government Entity Code, and part numbers.

### 3. Explanation of Columns (Sections II and III)

*a. Item No. (Column (1)).* Indicates the number used to identify items called out in the illustration.

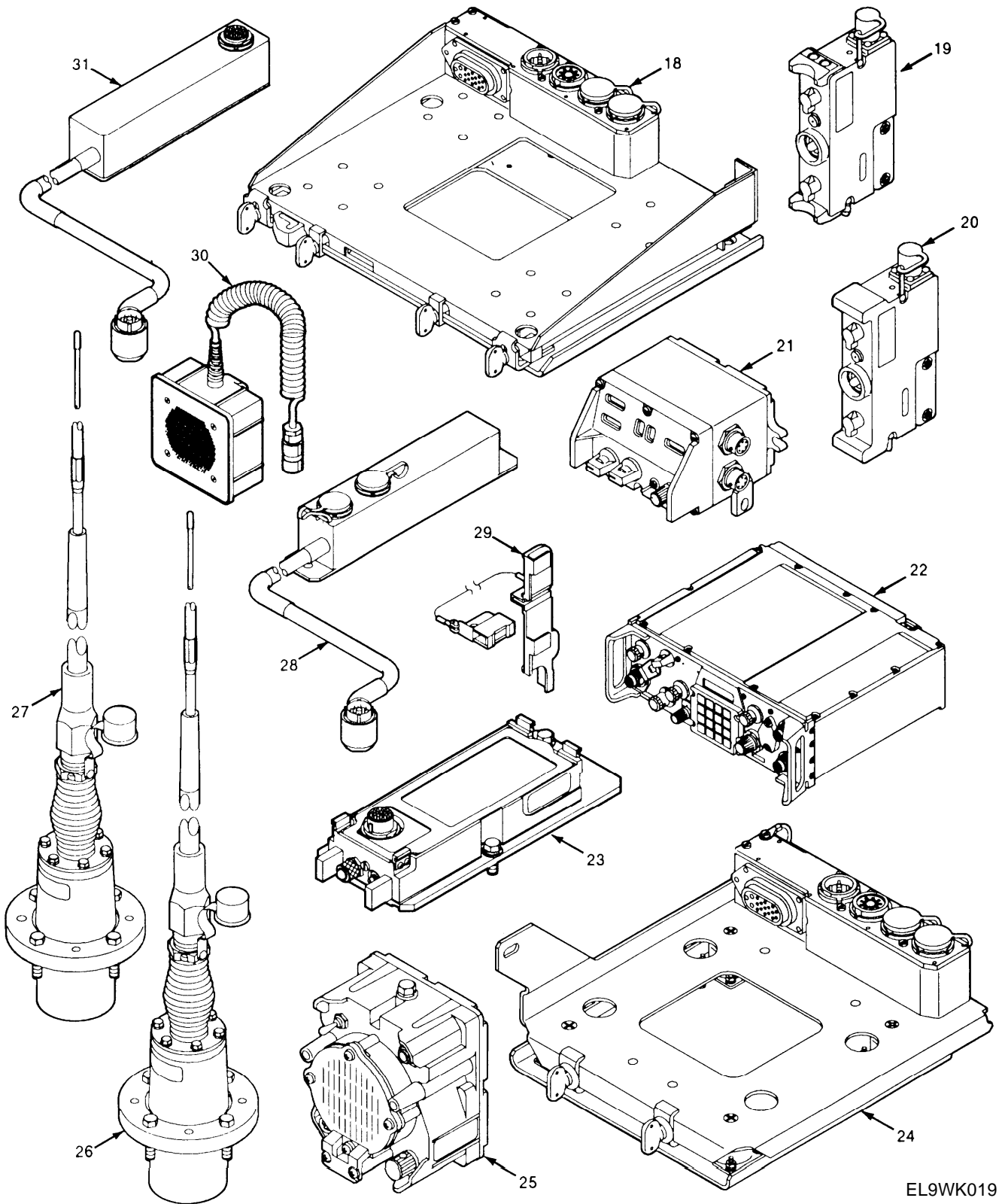
*b. SMR CODE (Column (2)).* The source, maintenance, and recoverability (SMR) code is a five-position code containing supply/requisitioning information, maintenance category authorization criteria, and disposition instruction as shown in the following breakout:





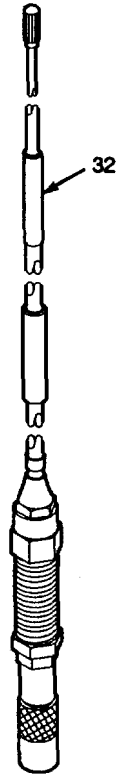
EL9WK018

■ Figure 1. SINCGARS Family of Radios (AN/VRC-92) (Sheet 18 of 20)



EL9WK019

■ Figure 1. SINGARS Family of Radios (Ancillary items) (Sheet 19 of 20)



EL9WK019A

Figure 1. SINGARS Family of Radios (Ancillary Items)(Sheet 20 of 20)