

**TECHNICAL MANUAL**

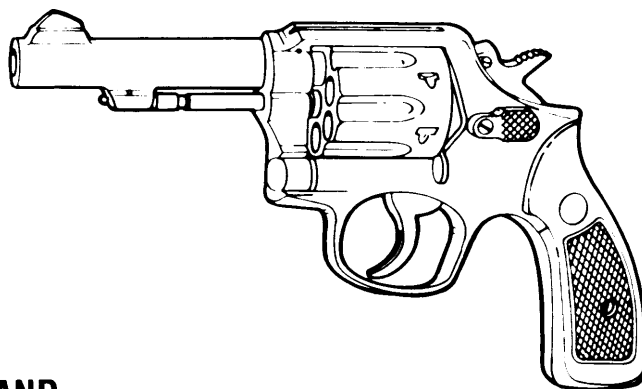
**OPERATOR'S, ORGANIZATIONAL, DIRECT SUPPORT, AND  
GENERAL SUPPORT MAINTENANCE MANUAL  
INCLUDING REPAIR PARTS AND SPECIAL TOOLS LIST  
FOR**

**REVOLVER, CALIBER .38 SPECIAL:  
SMITH AND WESSON  
MILITARY AND POLICE, M10**

**ROUND BUTT, 4-INCH BARREL  
(1005-00-937-5839)**

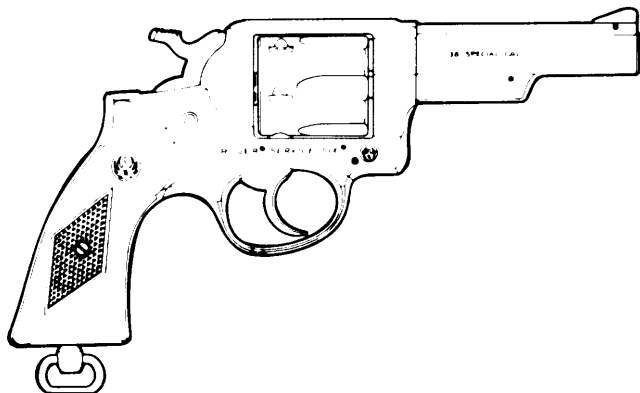
**ROUND BUTT, 2-INCH BARREL  
(1005-00-937-5840)**

**SQUARE BUTT, 4-INCH BARREL  
(1005-00-214-0934)**



**AND**

**REVOLVER, CALIBER .38 SPECIAL:  
RUGER SERVICE SIX, 4-INCH BARREL, M108**



**SQUARE BUTT W/O LANYARD LOOP  
(1005-01-040-8989)**

**SQUARE BUTT W/LANYARD LOOP  
(1005-01-040-8990)**

**ROUND BUTT, W/LANYARD LOOP  
(1005-01-094-7045)**

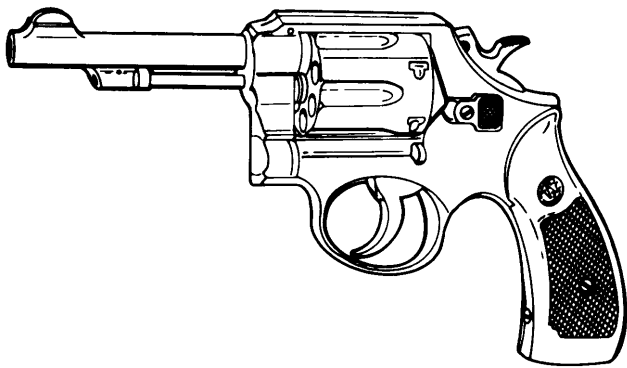
**HEADQUARTERS, DEPARTMENT OF THE ARMY**

**AUGUST 1985**

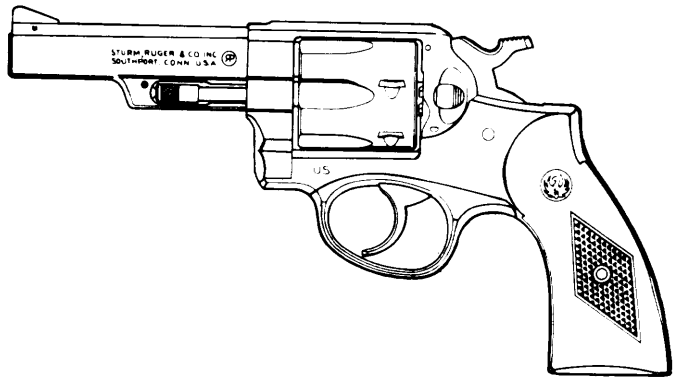
**TABLE OF CONTENTS**

		Page	Illus Figure
<b>CHAPTER 1</b>	<b>INTRODUCTION</b> .....	<b>1-1</b>	
Section I	General Information .....	1-1	
Section II	Equipment Description .....	1-1	
Section III	Technical Principles of Operation .....	1-4	
<b>CHAPTER 2</b>	<b>OPERATING INSTRUCTIONS</b> .....	<b>2-1</b>	
Section I	Description and Use of Operator's Controls and Indicators .....	2-1	
Section II	Operator/Crew Preventive Maintenance Checks and Services (PMCS) . . .	2-2	
Section III	Operation Under Usual Conditions .....	2-6	
Section IV	Operation Under Unusual Conditions .....	2-8	
<b>CHAPTER 3</b>	<b>OPERATOR MAINTENANCE INSTRUCTIONS</b> .....	<b>3-1</b>	
Section I	Lubrication Instructions .....	3-1	
Section II	Troubleshooting .....	3-3	
Section III	Operator Maintenance Procedures .....	3-3	
<b>CHAPTER 4</b>	<b>AMMUNITION</b> .....	<b>4-1</b>	
<b>CHAPTER 5</b>	<b>ORGANIZATIONAL MAINTENANCE INSTRUCTIONS</b> .....	<b>5-1</b>	
Section I	Repair Parts, Special Tools, TMDE, and Support Equipment .....	5-1	
Section II	Service Upon Receipt .....	5-1	
Section III	Organizational Preventive Maintenance Checks and Services (PMCS) . . .	5-2	
Section IV	Troubleshooting .....	5-5	
Section V	Organizational Maintenance Procedures .....	5-6	
Section VI	Preparation for Storage or Shipment .....	5-8	
<b>CHAPTER 6</b>	<b>DIRECT AND GENERAL SUPPORT MAINTENANCE INSTRUCTIONS</b> . . .	<b>6-1</b>	
Section I	Repair Parts, Special Tools, TMDE, and Support Equipment .....	6-1	
Section II	Service Upon Receipt .....	6-1	
Section III	Troubleshooting .....	6-1	
Section IV	Direct and General Support Maintenance Procedures .....	6-6	
Section V	Lubrication .....	6-53	
Section VI	Preparation for Storage or Shipment .....	6-53	
Section VII	Preembarkation Inspection of Materiel in Units Alerted for Overseas Movement .....	6-53	
<b>APPENDIX A</b>	<b>REFERENCES</b> .....	<b>A-1</b>	
<b>APPENDIX B</b>	<b>MAINTENANCE ALLOCATION CHART</b> .....	<b>B-1</b>	

	Page	Illus Figure
<b>APPENDIX C</b>	<b>ORGANIZATIONAL, DIRECT SUPPORT AND GENERAL SUPPORT</b>	
	<b>MAINTENANCE REPAIR PARTS AND SPECIAL TOOLS LIST . . . . . C-1</b>	
Section I	Introduction . . . . .	C-1
Section II	Repair Parts List . . . . .	C1-1
Group 00	Revolver assembly (Smith and Wesson) . . . . .	C1-1 C1
Group 01	Barrel assembly (Smith and Wesson) . . . . .	C2-1 C2
Group 02	Receiver assembly (Smith and Wesson) . . . . .	C3-1 C3
	0202 Cylinder and yoke assembly (Smith and Wesson) . . . . .	C4-1 C4
	0203 Hammer assembly (Smith and Wesson) . . . . .	C5-1 C5
	0204 Rebound slide assembly (Smith and Wesson) . . . . .	C6-1 C6
	0205 Trigger assembly (Smith and Wesson) . . . . .	C7-1 C7
	0206 Frame assembly (Smith and Wesson) . . . . .	C8-1 C8
Group 00	Revolver assembly (Ruger) . . . . .	C9-1 C9
Group 01	Barrel assembly (Ruger) . . . . .	C10-1 C10
Group 02	Receiver assembly (Ruger) . . . . .	C11-1 C11
	0201 Strut assembly (Ruger) . . . . .	C12-1 C12
	0202 Cylinder and crane assembly (Ruger) . . . . .	C13-1 C13
	0203 Hammer assembly (Ruger) . . . . .	C14-1 C14
	0205 Trigger assembly (Ruger) . . . . .	C15-1 C15
	0206 Frame assembly (Ruger) . . . . .	C16-1 C16
Section IV	National Stock Number and Part Number Index . . . . .	I-1
<b>APPENDIX D</b>	<b>ADDITIONAL AUTHORIZATION LIST . . . . .D-1</b>	
<b>APPENDIX E</b>	<b>EXPENDABLE/DURABLE SUPPLIES AND MATERIALS LIST . . . . .E-1</b>	
<b>APPENDIX F</b>	<b>ILLUSTRATED LIST OF MANUFACTURED ITEMS . . . . .F-1</b>	
	<b>ALPHABETICAL INDEX . . . . .Index 1</b>	



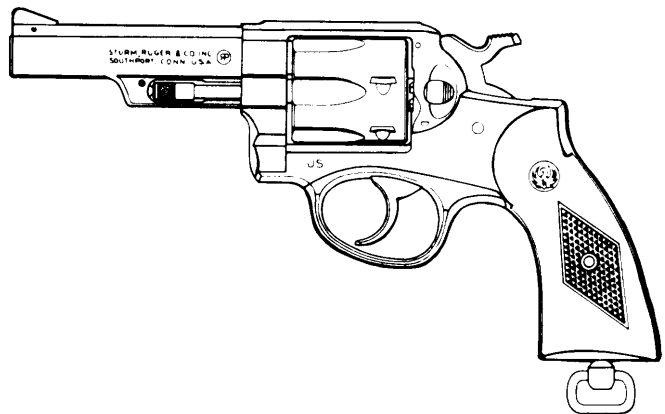
(1) REVOLVER, CALIBER .38 SPECIAL: S AND W, MILITARY AND POLICE, M10, ROUND BUTT, 4-INCH BARREL (1005-00-937-5839)



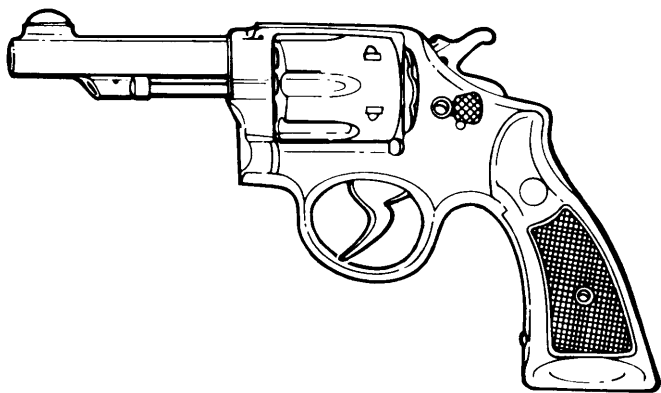
(4) REVOLVER, CALIBER .38 SPECIAL: RUGER SERVICE SIX, 4-INCH BARREL, M108, SQUARE BUTT W/O LANYARD LOOP (1005-01-040-8989)



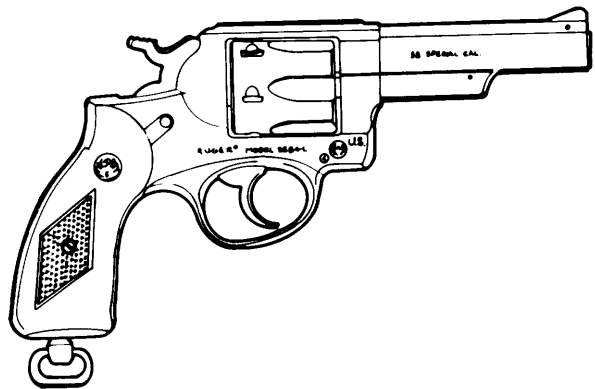
(2) REVOLVER, CALIBER .38 SPECIAL: S AND W, MILITARY AND POLICE, M10, ROUND BUTT, 2-INCH BARREL (1005-00-937-5840)



(5) REVOLVER, CALIBER .38 SPECIAL: RUGER SERVICE SIX, 4-INCH BARREL, M108, SQUARE BUTT W/LANYARD LOOP (1005-01-040-8990)



(3) REVOLVER, CALIBER .38 SPECIAL: S AND W, MILITARY AND POLICE, M10, SQUARE BUTT, 4-INCH BARREL (1005-00-214-0934)



(6) REVOLVER, CALIBER .38 SPECIAL: RUGER SERVICE SIX, 4-INCH BARREL, M108, ROUND BUTT W/LANYARD LOOP (1005-01-094-7045)

*Full External Views of .38 Caliber Revolvers.*

# CHAPTER 1 INTRODUCTION

---

## Section I GENERAL INFORMATION

### 1-1. SCOPE.

a. *Type of Manual.* This manual is for use by operator, organizational, direct support, and general support maintenance personnel and includes repair parts and special tools for operation and maintenance of .38 caliber special revolvers. Repair parts for revolvers are supported both through local purchase and/or normal supply channels. The manual covers the revolvers on page 1-0.

b. *Model Numbers and Equipment Names.*

(1) Revolver, caliber .38 special: Smith and Wesson (S and W), military and police, M10, round butt, 4-inch barrel

(2) Revolver, caliber .38 special: S and W, military and police, M10, round butt, 2-inch barrel

(3) Revolver, caliber .38 special: S and W, military and police, M10, square butt, 4-inch barrel

(4) Revolver, caliber .38 special: Ruger service six, 4-inch barrel, M108, square butt w/o lanyard loop

(5) Revolver, caliber .38 special: Ruger service six, 4-inch barrel, M108, square butt w/lanyard loop

(6) Revolver, caliber .38 special: Ruger service six, 4-inch barrel, M108, round butt w/lanyard loop

### 1-2. MAINTENANCE FORMS AND RECORDS.

Department of the Army forms and procedures used for equipment maintenance will be those prescribed by DA PAM 738-750, The Army Maintenance Management System (TAMMS).

### 1-3. DESTRUCTION OF ARMY MATERIEL TO PREVENT ENEMY USE.

Materiel will be destroyed in accordance with TM 750-244-7.

### 1-4. PREPARATION FOR STORAGE OR SHIPMENT.

Requirements for administrative storage will be in accordance with AR 190-11 Physical Security of Weapons, Ammunition and Explosives, and TM 740-90-1, Administrative Storage of Equipment.

### 1-5. REPORTING EQUIPMENT IMPROVEMENT RECOMMENDATIONS (EIR).

If your revolver needs improvement, let us know. Send us an EIR. You, the user, are the only one who can tell us what you don't like about your equipment. Let us know why you don't like the design or performance. Put it on an SF 368 (Quality Deficiency Report). Mail it to us at: Commander, US Army Armament, Munitions and Chemical Command, ATTN: AMSMC-QAD, Rock Island, IL 61299-6000. We'll send you a reply.

## Section II. EQUIPMENT DESCRIPTION

### 1-6. EQUIPMENT CHARACTERISTICS, CAPABILITIES, AND FEATURES.

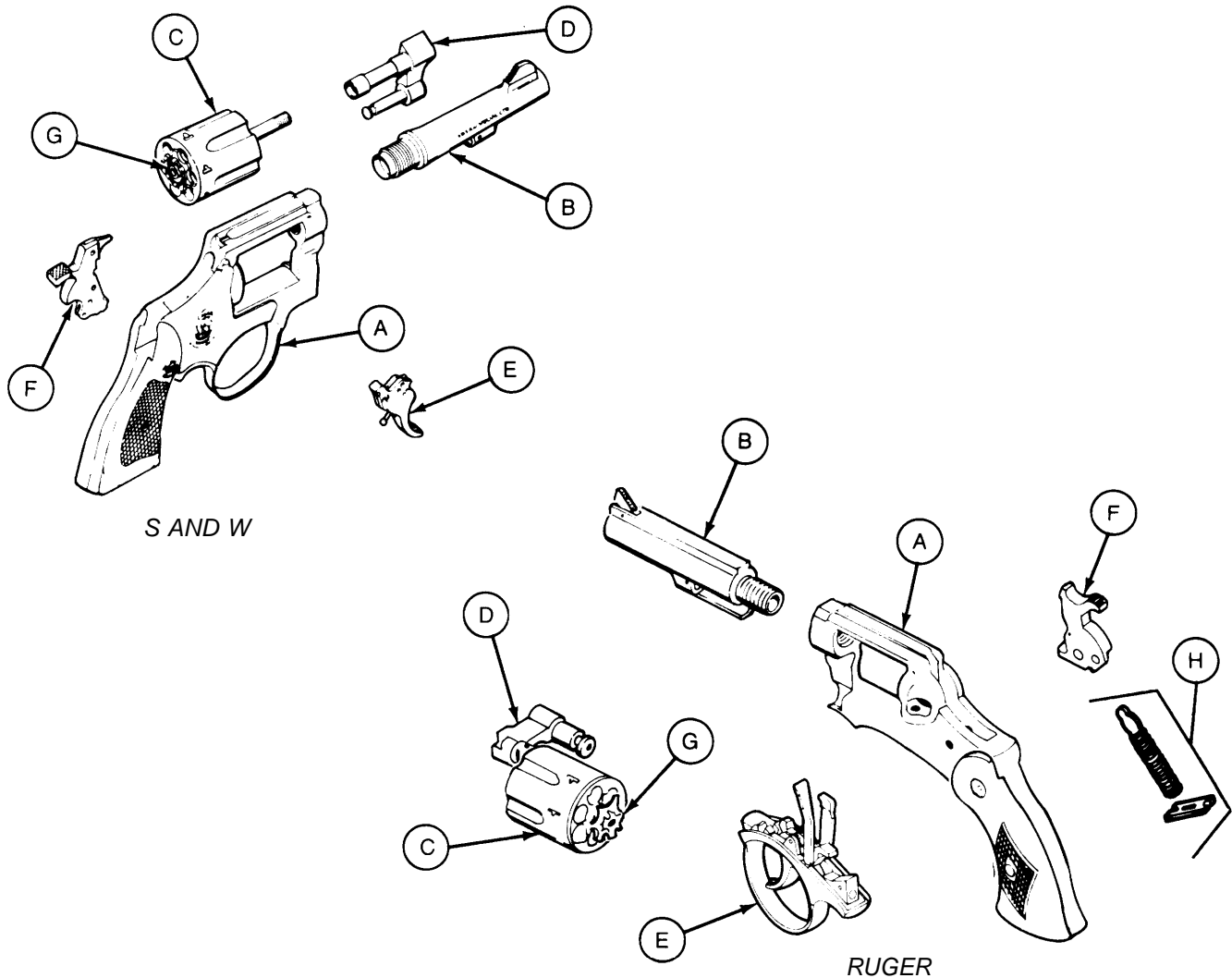
a. All models of the S and W and Ruger caliber .38 revolvers covered in this manual are six-shot, breech-loading, manually operated, hand-held weapons. These revolvers have a solid, one-piece frame; a swing-out cylinder with six chambers; and a hand-actuated extractor or ejector for easy unloading.

b. Built-in mechanical devices are provided to prevent the revolver from firing except by a deliberate pulling action on the trigger. No manually operated safeties

are provided. The sights are fixed, the trigger is serrated, and the hammer thumbpiece and forward portion of the extractor rod are knurled. The grips may be checkered or smooth.

c. The revolvers are selective double-action types since they may be fired by drawing the hammer back with the thumb to the cocked position and releasing it by squeezing the trigger (single action); or by squeezing the trigger to allow the hammer to be cocked and released (double action).

1-7. LOCATION AND DESCRIPTION OF MAJOR COMPONENTS.



- (A) FRAME ASSEMBLY. Machined to serve as a support for all major components. Houses action of weapon and provides a hand grip to aim and fire weapon.
- (B) BARREL ASSEMBLY. When firing receives and directs projectile and provides front sight.
- (C) CYLINDER ASSEMBLY. Houses cartridges for firing.
- (D) YOKE (S and W) OR CRANE (Ruger). Provides a mount for the cylinder assembly which may be locked into position for firing, or swung out for loading or unloading.
- (E) TRIGGER ASSEMBLY. Controls the firing of the revolver.
- (F) HAMMER ASSEMBLY. Spring loaded to provide force to fire the cartridges.
- (G) EXTRACTOR (S and W) OR EJECTOR (Ruger). Mounted in cylinder assembly to extract or eject cartridges and/or cartridge cases.
- (H) STRUT ASSEMBLY (Ruger only). Contains helical compression spring to provide force to hammer assembly.