

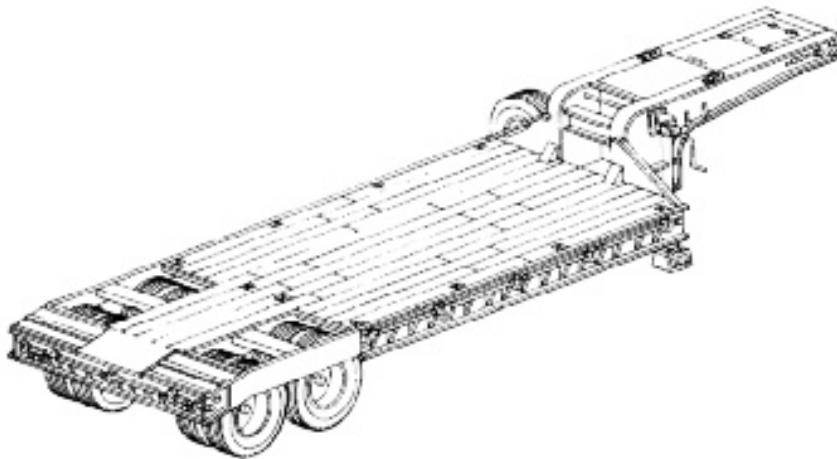
TM 9-2330-211-14&P

TECHNICAL MANUAL

**OPERATOR'S, UNIT, DIRECT SUPPORT, AND
GENERAL SUPPORT MAINTENANCE MANUAL
(INCLUDING REPAIR PARTS AND SPECIAL TOOLS LISTS)**

FOR

**SEMITRAILER, LOWBED: 25 TON,
4 WHEEL, M172A1 (NSN 2330-00-317-6448)**



Operating Instructions	2-1
Operator/Crew PMCS	2-6
Lubrication Instructions	3-1
Operator/Crew Troubleshooting Procedures	3-8
Unit PMCS	4-3
Unit Troubleshooting Procedures	4-9
Direct Support and General Support Maintenance	5-1
Maintenance Allocation Chart (MAC)	B-1
Repair Parts and Special Tools Lists (RPSTL)	F-1

This manual supersedes TM 9-2330-211-14&P dated 5 September 1984, and all changes.

Approved for public release; distribution is unlimited.

HEADQUARTERS, DEPARTMENT OF THE ARMY

JULY 1991

**OPERATOR'S, UNIT, DIRECT SUPPORT, AND
GENERAL SUPPORT MAINTENANCE MANUAL
(INCLUDING REPAIR PARTS AND SPECIAL TOOLS LISTS)**

FOR

**SEMITRAILER, LOWBED: 25 TON,
4 WHEEL, M172A1 (NSN 2330-00-317-6448)**

Current as of 27 February 1991

REPORTING ERRORS AND RECOMMENDING IMPROVEMENTS

You can help improve this manual. If you find any mistakes or know of a way to improve the procedures, please let us know. Mail your letter, DA Form 2028 (*Recommended Changes to Publications and Blank Forms*), or DA Form 2028-2, located in the back of this manual, direct to: Commander, U.S. Army Tank-automotive and Armaments Command, ATTN: AMSTA-AC-NML, Rock Island, IL 61299-7630. A reply will be furnished to you.

You may also provide DA Form 2028-2 information to TACOM via datafax or e-mail:

- TACOM's fax number is DSN 793-0726 or (309) 782-0726
- TACOM's e-mail address is amsta-ac-nml@ria-emh2.army.mil

TABLE OF CONTENTS

	Page
CHAPTER 1. INTRODUCTION	
Section I. General Information	1-1
Section II. Equipment Description and Data	1-2
Section III. Principles of Operation	1-6
CHAPTER 2. OPERATING INSTRUCTIONS	
Section I. Description and Use of Operator's Controls and Indicators	2-1
Section II. Operator/Crew Preventive Maintenance Checks and Services (PMCS)	2-6
Section III. Operation Under Usual Conditions	2-11
Section IV. Operation Under Unusual Conditions	2-21
CHAPTER 3. OPERATOR MAINTENANCE	
Section I. Lubrication Instructions	3-1
Section II. Operator/Crew Troubleshooting Procedures	3-8
Section III. Operator Maintenance	3-14

* This manual supersedes TM 9-2330-211-14&P, dated 5 September 1984, and all changes.

TABLE OF CONTENTS(Con't)

	Illus Fig	Page
CHAPTER 4 UNIT MAINTENANCE		
Section I. Repair Parts; Special Tools; Test, Measurement, and Diagnostic Equipment (TMDE); and Support Equipment		4-1
Section II. Service upon Receipt		4-2
Section III. <u>Unit Preventive Maintenance Checks and Services (PMCS)</u>		4-3
Section IV. <u>Unit Troubleshooting Procedures</u>		4-9
Section V. Electrical System Maintenance		4-21
Section VI. Brake System Maintenance		4-49
Section VII. Wheel, Hub, and Drum Maintenance		4-95
Section VIII. Frame and Towing Attachments Maintenance		4-104
Section IX. Accessory Items Maintenance		4-141
Section X. Preparation for Storage or Shipment		4-145
CHAPTER 5 <u>DIRECT SUPPORT AND GENERAL SUPPORT MAINTENANCE</u>		
Section I. Repair Parts; Special Tools; Test, Measurement, and Diagnostic Equipment (TMDE); and Support Equipment		5-1
Section II. General Maintenance Instructions		5-1
Section III. Rear Axle Maintenance		5-3
Section IV. [Deleted]		
Section V. Drum and Tire Maintenance		5-17
Section VI. Body Maintenance		5-20
APPENDIX A REFERENCES		A-1
APPENDIX B <u>MAINTENANCE ALLOCATION CHART (MAC)</u>		B-1
APPENDIX C COMPONENTS OF END ITEM AND BASIC ISSUE ITEMS LISTS		C-1
APPENDIX D ADDITIONAL AUTHORIZATION LIST		D-1
APPENDIX E EXPENDABLE/DURABLE SUPPLIES AND MATERIALS LIST		E-1
APPENDIX F <u>REPAIR PARTS AND SPECIAL TOOLS LISTS (RPSTL)</u>		F-1
Section I. Introduction		F-1
Section II. Repair Parts List		1-1
 Group 06 ELECTRICAL SYSTEM		
0609 - LIGHTS		1-1
COMPOSITE MARKER LIGHT	1	1-1
CLEARANCE LIGHTS	2	2-1
0613 - HULL OR CHASSIS WIRING HARNESS		3-1
WIRING HARNESS	3	3-1
CABLE ASSEMBLY	4	4-1

TABLE OF CONTENTS (Con't)

	Illus Fig	Page
GROUP 11 REAR AXLE		
1100 -REAR AXLE ASSEMBLY,		5-1
TANDEM AXLE.	5	5-1
SHACKLE BOX	6	6-1
1108 -WALKING BEAMS, STUB AXLES AND PARTS		7-1
WALKING BEAM	7	7-1
GROUP 12 BRAKES		
1202 -SERVICE BRAKES		8-1
BRAKE MECHANISM	8	8-1
1206 -MECHANICAL BRAKE SYSTEM		9-1
SLACK ADJUSTER	9	9-1
1208 -AIRBRAKE SYSTEM		10-1
AIRBRAKE LINES.	10	10-1
EMERGENCY RELAY VALVE.	11	11-1
AIR FILTER LINE	12	12-1
AIR RESERVOIR	13	13-1
AIRBRAKE CHAMBER	14	14-1
A I R B R A K E C O U P L I N G S	15	15-1
GROUP 13 WHEELS		
1311 -WHEEL ASSEMBLY		16-1
HUB AND DRUM	16	16-1
WHEELS	17	17-1
1313 -TIRES AND TUBES		18-1
TIRES	18	18-1
GROUP 15 FRAME AND TOWING ATTACHMENTS		
1504 -SPARE WHEEL CARRIER		19-1
S P A R E W H E E L C A R R I E R	19	19-1
1506 - FIFTH WHEEL		20-1
KINGPIN	20	20-1
1 5 0 7 - L A N D I N G G E A R A N D L E V E L I N G J A C K S		21-1
LANDING GEAR HANDCRANK.	21	21-1
LANDING GEAR ATTACHING PARTS	22	22-1
LEFT LANDING GEAR	23	23-1
RIGHT LANDING GEAR	24	24-1
GROUP 18 BODY		
1808 -STOWAGE RACKS, BOXES, STRAPS, CARRYING CASES, C A B L E R E E L S , H O S E R E E L S , E T C .		25-1
STOWAGE	25	25-1
1 8 1 0 - C A R G O B O D Y : (D U M P , S T A K E , A N D P L A T F O R M)		26-1
DECKING HARDWARE	26	26-1
GROUP 22 BODY AND CHASSIS ACCESSORY ITEMS		
2202 - ACCESSORY ITEMS		27-1
WHEEL CHOCKS	27	27-1
REFLECTORS,	28	28-1

TABLE OF CONTENTS (Con't)

	Illus Fig	Page
2210- DATA PLATES AND INSTRUCTION HOLDERS		29-1
DATA PLATES	29	29-1
 GROUP 95 GENERAL USE STANDARDIZED PARTS		
9501- BULK MATERIEL		BULK-1
BULK	BULK	BULK-1
 Section III. Special Tools List		
 GROUP 26 TOOLS AND TEST EQUIPMENT		
2604 - SPECIAL TOOLS		30-1
SPECIAL TOOLS	30	30-1
 Section IV. Cross-reference Indexes		
NATIONAL STOCK NUMBER INDEX		I-1
PART NUMBER INDEX		I-4
FIGURE AND ITEM NUMBER INDEX		I-11
 APPENDIX G ILLUSTRATED LIST OF MANUFACTURED ITEMS		 G-1
APPENDIX H TORQUE LIMITS		H-1
INDEX		Index-1

CHAPTER 1
INTRODUCTION

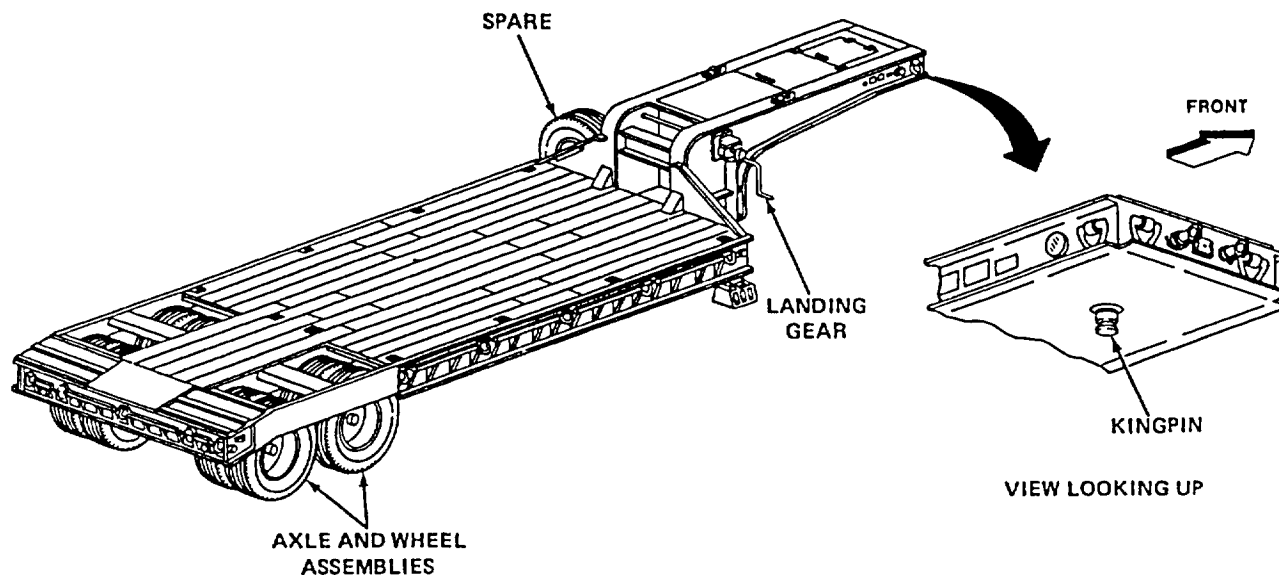
1-1. OVERVIEW

The purpose of this chapter is to acquaint you with the M172A1 semitrailer equipment, size, shape, and operation.

		<i>Page</i>
Section I	General Information	1-1
Section II	Equipment Description and Data.....	1-2
Section III	Principles of Operation	1-6

Section I. GENERAL INFORMATION

	<i>Page</i>		<i>Page</i>
Destruction of Army Materiel to Prevent Enemy Use.....	1-2	Reporting Equipment Improvement Recommendations (EIRs).....	1-2
Maintenance Forms, Records, and Reports.....	1-2	Scope	1-1



1-2. SCOPE

Type of Manual. Operator's, Unit, Direct Support, and General Support Maintenance (Including Repair Parts and Special Tools Lists).

Model Number and Equipment Name. M172A1, 25 Ton Lowbed Semitrailer.

Purpose of Equipment. Carries equipment on highways and/or off-road.

TA506781

1-3. MAINTENANCE FORMS, RECORDS, AND REPORTS

Department of the Army forms and procedures used for equipment maintenance will be those prescribed by DA Pam 738-750, *The Army Maintenance Management System (TAMMS)*.

1-4. DESTRUCTION OF ARMY MATERIEL TO PREVENT ENEMY USE

Refer to TM 750-244-6, *Procedures for Destruction of Tank-Automotive Equipment to Prevent Enemy Use*.

1-5. REPORTING EQUIPMENT IMPROVEMENT RECOMMENDATIONS (EIRs)

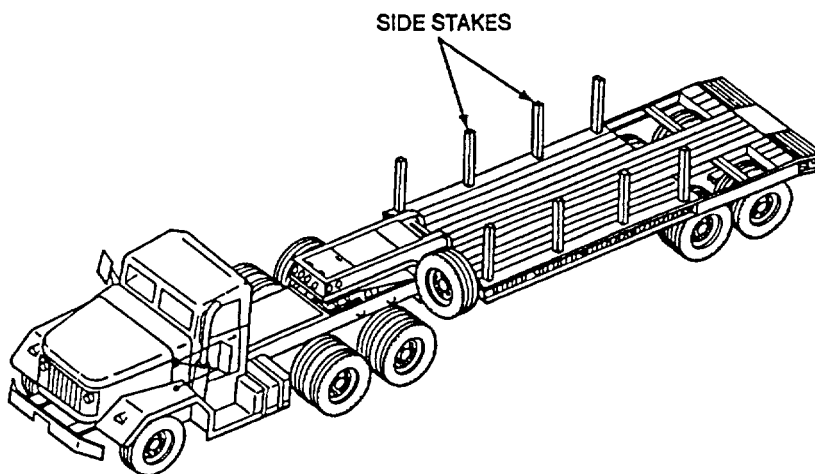
If your semitrailer needs improvement, let us know. Send us an EIR. You, the user, are the only one who can tell us what you don't like about your equipment. Let us know what you don't like about the design or performance. Put it on an SF Form 368 (Quality Deficiency Report). Mail it to us at: Commander, U.S. Army Tank-automotive and Armaments Command, ATTN: AMSTA-IM-OPIL, Warren, MI 48397-5000. We will send you a reply.

Section II. EQUIPMENT DESCRIPTION AND DATA

	<i>Page</i>		<i>Page</i>
Equipment Characteristics, Capabilities, and Features	1-2	Location and Description of Data Plates.....	1-4
Equipment Data.....	1-5	Location and Description of Major Components.....	1-2

1-6. EQUIPMENT CHARACTERISTICS, CAPABILITIES, AND FEATURES

The M172A1 Lowbed Semitrailer is designed to be pulled by a tractor equipped with a fifth wheel. Side stakes can be added to configure for various types of cargo.



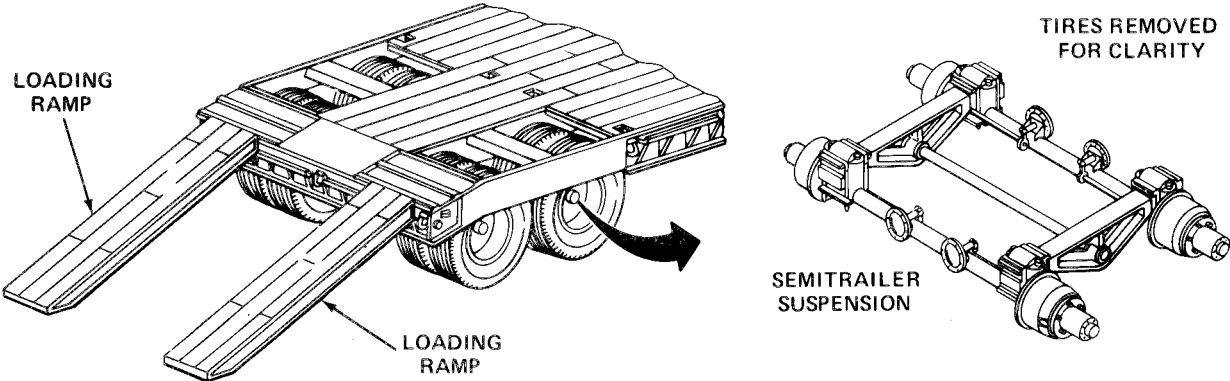
1-7. LOCATION AND DESCRIPTION OF MAJOR COMPONENTS

The semitrailer suspension has two rear-mounted axles that are attached to a walking beam assembly. The walking beam assembly is attached to the frame of the semitrailer.

Two loading ramps are furnished with the semitrailer. The ramps are used to load and unload the semitrailer.

TA506782

1-7. LOCATION AND DESCRIPTION OF MAJOR COMPONENTS (Con't)



A composite service tail, stop, turn signal, and blackout light is mounted at both left and right rear of semitrailer.

A red clearance light is mounted on both left and right sides, at rear of semitrailer.

An amber clearance light is mounted on both left and right sides, near the front of the semitrailer.

There are two red reflectors at each rear corner of the semitrailer.

There are two amber reflectors at each front corner of the semitrailer, and one on the left and right side of the gooseneck.

